



1982 FORD FAIRMONT

FUTURA

LOOK OUT WORLD
HERE COMES FORD



FORD FAIRMONT **FUTURA** FOR 1982

A proven performer

Fairmont Futura. There's every reason to own this outstanding mid-size car: Its excellent economy,* exceptional value, and the efficient way space is used for comfort and utility.

Since its introduction, this popular Ford has been road-tested over millions of

miles by more than a million owners, value-conscious people like yourself, all across America.

Make it a point soon to take Futura on a test drive at your Ford Dealer. Futura. It makes more sense than ever.

*See projected Ford Division mileage estimates on page 13.



Above: Futura 4-Door Sedan in Dark Blue Metallic.
Front, Back Covers: Futura 2-Door Coupe in Red.

FORD FAIRMONT **FUTURA**

Right: Dual bright remote control mirrors, standard on 2-door coupe and 4-door sedan.



Right Center: Low-back bucket seats in optional Medium Fawn cloth/vinyl.



Left: Attractive Futura instrument panel with full-width high-gloss wood-tone appliques. 4-spoke steering wheel shown, part of Interior Luxury Group option.

Below: Interior Luxury Group option with flight bench and rear seats in Wedgewood Blue velour.



FORD FAIRMONT FUTURA

Right: Futura 2-Door Sedan in Bright Red.



Right Center: Optional bench seat in Sand vinyl.



Left Center: Interior Luxury Group option with flight bench seat in Dark Red velour.



Left: New deep-well trunk accommodates luggage or grocery bags in an upright position.

Below: Futura 2-Door Coupe in Polar White



THIS IS FORD FAIRMONT **FUTURA** FOR 1982.



It makes more sense than ever.

This popular Ford mid-size was designed to provide high fuel efficiency, roominess and value for people, families especially, looking for a practical alternative to larger, less economical cars. With the ever-growing trend toward smaller cars today, Futura makes more sense than ever.

Your choice of styles

Consider Futura sedan in either its 2-door version, the most affordable model; or the 4-door, as handsome as it is comfortable. A car with high mileage* and more than 110 cu. ft. of total interior space: This is the Futura sedan, by anyone's definition a very practical automobile.

If sporty is your style, there's the attractive Futura 2-Door Coupe. It presents a silhouette that's long and

low, sleekly contoured from the clean-lined hood to the wraparound taillamps. Plus these special styling cues: the wrapover roof pillar design, diamond-shaped quarter windows, canted windshield and back window. This is the Futura coupe, a car of high style inside and out.

The comforts of space

Seated in a Futura, you may feel as though you're in a large car. Futura's interior is carefully designed to be roomy — and that means comfort.

You're treated to the pleasure and convenience of the "driver command" seating position. Large windows all around, narrow pillars, plus low cowl, door and windshield belt lines — all of which contribute to Futura's roomy, inviting atmosphere.

With the standard bucket seats, Futura is a five-passenger car. Choose either the optional full-width bench seat or the flight bench seat with its fold-down center armrest, and Futura will seat six passengers.

And new this year, Futura features the spacious "deep-well" trunk that carries your grocery bags or luggage in an upright position. The deep-well trunk is an added convenience for everyday practical needs, but especially appreciated when you and your family pack up for a weekend picnic or long vacation.

Value that invites comparison

Compare Futura's impressive standard equipment for value with other cars in the mid-size class. Begin with notable engineering features, such as power front disc/rear drum brakes, high-illumination halogen



Far Left: Futura 2-Door Coupe in Polar White (as seen on pages 6-7).

Center: Interior Luxury Group in Wedgewood Blue (shown also on pages 4-5).

Left: Futura 4-Door Sedan in Dark Blue Metallic (see also pages 2-3).

headlamps, deluxe sound insulation package.

Style, too, offers strong points for comparison. Futura has turbine wheel covers and bodyside accent paint stripes (2-door coupe, 4-door sedan). Deluxe wheel covers (2-door sedan). Plus wide bodyside moldings with integral wheel lips. Distinctive bright molding treatment.

Among Futura's many interior appointments are color-keyed seat belts with special comfort regulators for freedom of movement. Luxury door trim panels with high-gloss woodtone applique inserts and carpeted lower panels.

The attractively arranged instrument panel prominently displays the speedometer with alternate kilometer markings, odometer, fuel

gauge and warning lights in two large pods. High-gloss woodtone appliques extend the full width of the panel.

There's a wide range of comfort and convenience features. AM radio with dual front speakers (may be deleted for credit). Dual remote control mirrors (2-door coupe, 4-door sedan). Day/night inside mirror. Inside hood release. Lockable glove box. RH visor vanity mirror. Rear seat ashtray. Column-mounted controls for fingertip convenience. Plus Ford's fluidic windshield washer system, which sprays a wide pattern of large washing solution droplets over most of the windshield surface.

Fairmont Futura for 1982. High marks in standard features that add up to solid value.

Ways to personalize your Futura

Take Futura with the optional Interior Luxury Group, a handsome way to travel economically.

Bucket seats (or flight bench seat if you prefer) are upholstered in two rich fabrics — crushed velour bolsters and ultra-soft velour seat inserts. Floor carpeting is a plush cut-pile. The luxury 4-spoke steering wheel has woodtone hub and rim inserts matching the instrument panel and door trim appliques. The package also includes carpeting in the luggage compartment and Luxury Sound Insulation.

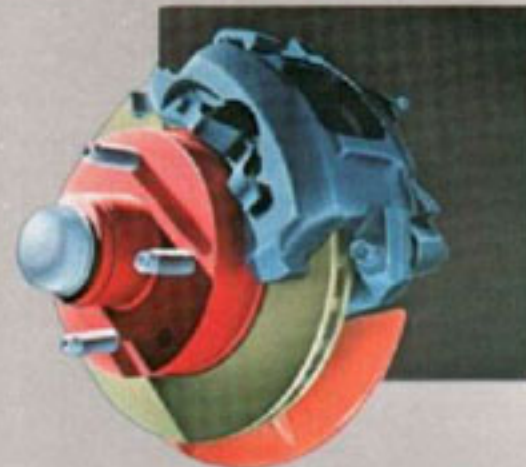
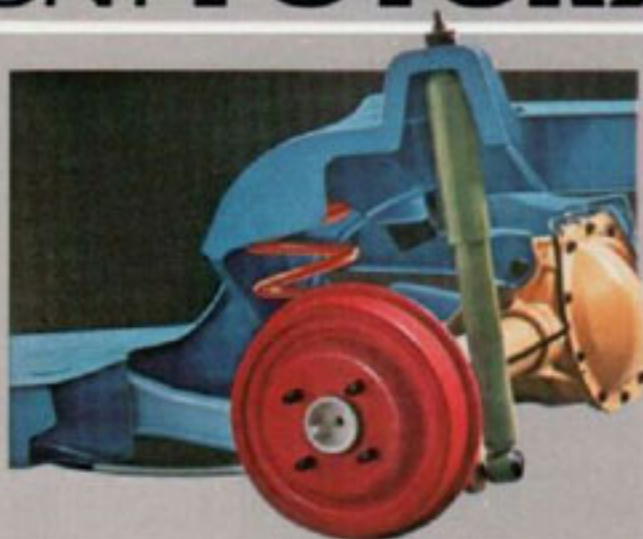
The Interior Luxury Group is one of many personal options available to you. See the Futura Options Selector on pages 14-15.

*See projected Ford Division mileage estimates on page 13.

FORD FAIRMONT **FUTURA** — A CLOSER LOOK.

Right: 4-bar link rear suspension with coil springs.

Right Center: Standard power front disc/rear drum brakes.



The beauty of Futura goes much deeper than style, deeper than even the remarkable way available space is used so efficiently. Beneath Futura's distinctive style is sophisticated engineering committed to the kind of overall efficiency that today's driving demands.

Futura power teams

Futura, with standard 2.3 liter OHC 4-cylinder engine and 4-speed manual transmission, provides excellent fuel economy. Mileage estimates for 1982 are 32 est. hwy, **22** EPA est. mpg.* That's as good as you'll find in many smaller cars.

And Futura with a 16-gallon gas tank gives you plenty of distance between fill-ups — plus longer range with the new optional 20-gallon tank.

The 2.3 liter engine is available with optional SelectShift automatic transmission, which has a feature of interest not found in all automatics. When the gear selector is placed in "2" position, the transmission never shifts out of second gear. Because second gear has less torque than first gear, better traction is possible on slippery or loose surfaces.

The optional 3.3 liter (200 CID) 6-cylinder engine is teamed with the new SelectShift automatic transmission with locking torque feature, which provides a near mechanical linkup in all three gears to reduce most of the power waste caused by hydraulic slippage in the torque converter.

Electrical system features

Three important electrical components are near the top of the list of Notable Standard Features on page 12. They're designed to lower maintenance costs, thus figure significantly in Futura's value in the long run.

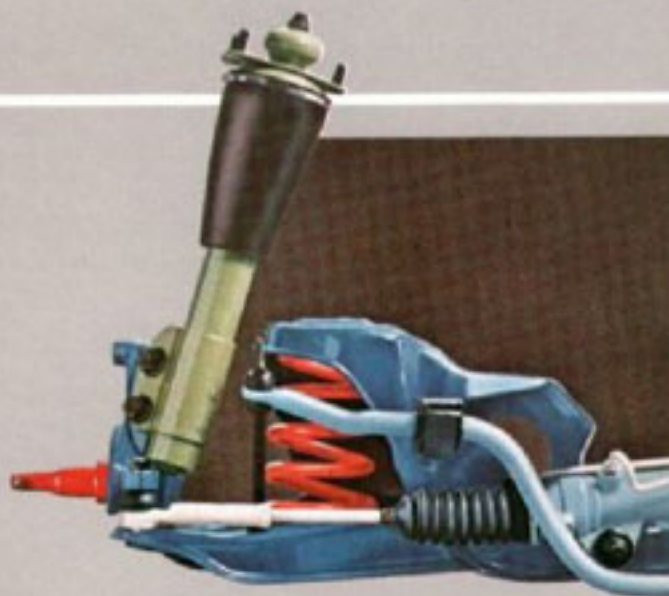
DuraSpark electronic ignition eliminates the breaker points and condenser to allow longer maintenance intervals between spark plug changes. Electronic voltage regulator is designed to provide precise control of system voltage. Its solid-state construction has no moving parts to wear out. Maintenance-free battery never requires fluid checks or replacement.

A practical performance option

The Traction-Lok axle, available with all power teams, puts a rather simple principle to work for your convenience. Under conditions where one rear driving wheel could spin on ice, snow, sand or mud, Traction-Lok automatically shifts some of the driving force (or torque) to the other wheel to take advantage of its better traction.

* Projected Ford Division estimates for comparison. Your mileage may differ depending on speed, distance and weather. Actual highway mileage will probably be lower. See your Ford Dealer for his 1982 EPA Gas Mileage Guide.





Left Center: 2.3 liter overhead cam 4-cylinder engine for excellent fuel economy.

Left: MacPherson strut-type front suspension with stabilizer bar.

Modern suspension system

Futura has a modified version of the famous MacPherson strut front suspension. Futura was among the first American-built cars to incorporate this advanced suspension system.

Precise steering response

Rack and pinion steering provides a more direct linkage between the steering wheel and front wheels. It's an efficient, low-friction system that

Advanced tire design

Standard tires are P-metric 175/75R 14-in. steel-belted radials. P-metric tires are designed to improve fuel economy by allowing increased inflation pressure (up to 35 psi) and by incorporating a light carcass weight and reduced rolling resistance rubber tread compounds.

Aerodynamics efficiency

Fairmont Futura was the first of Ford's contemporary generation of cars to receive extensive testing in the wind tunnel laboratory, and has since undergone many refinements as air flow management techniques have developed the science of dealing with the adverse effects of air drag on fuel economy. Aerodynamics efficiency plays an important role in Futura's excellent highway mileage.



Rear suspension is the 4-bar link design with coil springs engineered for low-friction operation. And with the shock absorbers positioned vertically outboard of the rear rails, this system allows for more interior space, especially in the luggage compartment where it can be put to good use.

For firmer ride and handling, choose one of two optional suspension packages. One consists of a larger front stabilizer bar, rear stabilizer bar, modified rear spring rates, stiffer shock valving, upgraded lower arm bushings, and 5-1/2-in. wheels. The other package includes TRX low-profile steel-belted radial tires (P190/65R 390) with TR-type aluminum wheels and special handling components.

eliminates such components as the gear box in other designs. Optional power rack and pinion steering has the "variable ratio" feature that provides a conventional gear ratio for straightaway driving and progressively faster ratios for cornering and ease of handling in tight turning situations.

Braking system

Futura's front and rear brakes are power-assisted as standard equipment. The front disc brakes feature Ford's pin slider caliper mounts designed to reduce brake drag. The caliper, mounted on a machine surface in the anchor plate, automatically centers itself and pressure is applied equally through the pads to both sides of the rotor.

FORD FAIRMONT FUTURA DATA CENTER



FORD LIMITED CORROSION PERFORATION WARRANTY

Futura, like all new model Ford cars sold in the 50 United States, is covered by Ford Motor Company's 3-year, unlimited mileage corrosion perforation warranty. Under this warranty any part which, in normal use, rusts through from corrosion within three years of retail delivery or first use will be repaired or replaced free of charge by the selling dealer after inspection by a Ford representative. Exhaust system components or parts which develop corrosion perforation as a result of accidents or other damage are not covered.

FORD-PAID REPAIR PROGRAMS AFTER THE WARRANTY PERIOD

Sometimes Ford offers adjustment programs to pay all or part of the cost of certain repairs. These programs are intended to assist owners and are in addition to the warranty or to required recalls. Ask Ford or your dealer about such programs relating to your Ford or Lincoln-Mercury vehicle.

To get copies of any adjustment program for your vehicle or the vehicle of interest to you:

Call Ford toll-free at 1-800-241-3673.

Alaska and Hawaii call 1-800-243-3711 and in Georgia call 1-800-282-0959.

Or write Ford at:

Ford Customer Information System
Post Office Box 95427
Atlanta, Georgia 30347.

We'll need your name and address; year, make, and model vehicle, as well as engine size; and whether you have a manual or automatic transmission.

NOTABLE STANDARD FEATURES

ENGINEERING	2-Door Sedan	2-Door Coupe	4-Door Sedan
2.3 liter OHC 4-cylinder engine with DuraSpark electronic ignition	\$	\$	\$
Electronic voltage regulator	\$	\$	\$
Maintenance-free battery	\$	\$	\$
4-speed fully synchronized manual transmission	\$	\$	\$
MacPherson strut-type front suspension with stabilizer bar; four-link coil spring rear system	\$	\$	\$
Power front disc/rear drum brakes	\$	\$	\$
Rack and pinion steering	\$	\$	\$
P175/75R 14" BSW steel-belted radial tires	\$	\$	\$
2-speed windshield wipers with fluidic washer system	\$	\$	\$
3-speed heater/defroster	\$	\$	\$
Ram-air forced ventilation	\$	\$	\$
Deluxe sound insulation	\$	\$	\$

EXTERIOR

Dual rectangular halogen headlamps	\$	\$	\$
Deluxe wide bodyside moldings with integral wheelcaps	\$	\$	\$
Bodyside accent paint stripes	O	\$	\$
Turbine wheel covers	O	\$	\$
Deluxe wheel covers	\$	NA	NA
Front bumper guards	\$	\$	\$
Dual remote control mirrors	O	\$	\$
Bright left-hand mirror (non-remote)	\$	NA	NA
Bright window and belt moldings	\$	\$	\$
Wrapover roof pillar	NA	\$	NA
Wraparound taillamps	NA	\$	NA

INTERIOR

Low-back vinyl bucket seats	\$	\$	\$
Deluxe color-keyed seat belts with comfort regulators	\$	\$	\$
Inertia seat back releases (2-door models)	\$	\$	\$
Deluxe door trim panels with high-gloss woodtone appliques and carpeted lower panels	\$	\$	\$
Front armrests with integral door pull handles	\$	\$	\$
Deluxe high-gloss woodtone instrument panel appliques	\$	\$	\$
Steering column-mounted controls for horn, turn signals, headlamp dimmer with flash to pass feature, windshield wipers/washer	\$	\$	\$
Day/night rearview mirror	\$	\$	\$
AM radio with dual front speakers (may be deleted for credit)	\$	\$	\$
Inside hood release	\$	\$	\$
Deep-well luggage compartment	\$	\$	\$
Courtesy light switches on driver and passenger doors	\$	\$	\$
Glove box lock	\$	\$	\$
Right-hand visor vanity mirror	\$	\$	\$
Cigarette lighter	\$	\$	\$
Rear seat ashtray	\$	\$	\$
Coin tray integral with color-keyed shift boot	\$	\$	\$
Color-keyed cut-pile carpeting	\$	\$	\$

\$ = Standard O = Optional NA = Not available

MEASUREMENTS

	2-Door/4-Door Sedans	2-Door Coupe
Wheelbase	105.5"	105.5"
Length	195.5"	197.4"
Height	52.9"	51.7"
Width	71.0"	71.0"
Front Tread	56.6"	56.6"
Rear Tread	57.0"	57.0"
Luggage Capacity	16.8 cu. ft.	16.1 cu. ft.
Fuel Capacity	16.0 gal.*	16.0 gal.*
Curb Weight	2,727/2,768 lb.	2,757 lb.
Passengers	5†	5†

*20-gallon extended range fuel tank available.
†Six-passenger seating with optional bench or flight bench seat.

COLORS AND TRIMS

INTERIOR TRIM COLORS	EXT. PAINT COLORS	Black	Polar White	Light Pewter Metallic	Red	Bright Red	Dark Blue Metallic	Pastel Blue	Antique Cream	Dark Cordovan Metallic	Dark Brown Metallic	Fawn	Medium Vaquero Glow*	Sand Glow*
Dark Red	A, D	W, D	D, 4	D, A, W	A, W									
Wedgewood Blue	A	W, B	4			B, W	B, W							
Medium Fawn	A	W, Z								W, Z	A, W, Z			
Vaquero	A	W, F								F, W		F, W		
Sand	A, Y	W, Y							Y, A, W					A, W, Y

*Optional Glamour paint colors.

VINYL ROOF COLOR CODES: A — Black, B — Blue, D — Red, F — Cordovan, W — White, Y — Antique Cream, Z — Dark Brown,

4 — Light Pewter

OPTIONAL TU-TONE COMBINATIONS: • Fawn/Dark Brown Metallic • Medium Vaquero Glow/Dark Cordovan Metallic

• Antique Cream/Sand Glow • Light Pewter Metallic/Medium Pewter Metallic

SCHEDULED MAINTENANCE

Ford wants to reduce both the frequency and cost of scheduled maintenance on its cars to an absolute minimum. Here are the scheduled maintenance intervals for the new Futura.

Engine Oil Change	each 7,500 miles
Spark Plug Change	each 30,000 miles
Air Filter Replacement	each 30,000 miles
Engine Coolant Replacement	each 52,500 miles or 3 years

GAS MILEAGE ESTIMATES

32 EST. HWY. 22

EPA EST. MPG

Projected Ford Division estimates for comparison. Your mileage may differ depending on speed, distance and weather. Actual highway mileage will probably be lower. See your Ford Dealer for his 1982 EPA Gas Mileage Guide.

TECHNICAL SERVICE BULLETINS

All vehicles need repairs during their lifetime. Sometimes Ford issues Technical Service Bulletins (TSBs) and easy-to-read explanations describing unusual engine or transmission conditions which may lead to costly repairs, the recommended repairs, and new repair procedures. Often a repair now can prevent a more serious repair later. Ask Ford or your dealer for any such TSBs and explanations relating to your Ford or Lincoln-Mercury vehicle.

To get copies of these Technical Service Bulletins and explanations for your vehicle or the vehicle of interest to you:

Call Ford toll-free at 1-800-241-3673.

Alaska and Hawaii call 1-800-243-3711 and in Georgia call 1-800-282-0959.

Or write Ford at:

Ford Customer Information System
Post Office Box 95427
Atlanta, Georgia 30347.

We'll need your name and address; year, make, and model vehicle, as well as engine size; and whether you have a manual or automatic transmission.

"ASK YOUR FORD DEALER"

Following publication of this catalog, certain changes in standard equipment, options, prices and the like, may have occurred which would not be included in these pages. Your Ford Dealer is your best source for up-to-date information.

PRODUCT CHANGES

Ford Division reserves the right to change product specifications at any time without incurring obligations.

FORD FAIRMONT **FUTURA** OPTIONS SELECTOR



A



B



D

The following options give you the opportunity to equip your Futura to your personal specifications. Options add not only to the appearance, comfort and convenience of your new car, but to its overall value as well.

Entertainment Systems

- AM/FM Monaural Radio with Dual Front Speakers
- AM/FM Stereo Radio with Cassette Tape Player and Dual Front/Rear Speakers (A)
- AM/FM Stereo Radio with 8-Track Tape Player and Dual Front/Rear Speakers
- AM/FM Stereo Radio with Dual Front/Rear Speakers
- Premium Sound System.* Power amplifier and larger rear speakers.

Appearance

- Interior Luxury Group.* Includes bucket seats (or flight bench seat) in luxury velour upholstery, luxury 4-spoke steering wheel, luxury sound insulation package, deep cut-pile carpeting, luggage compartment carpeting. For 2-door coupe, 4-door sedan.
- Tu-Tone Paint*
- Accent Paint Stripes. For 2-door sedan.
- Glow Paint. Medium Vaquero and Sand.

Comfort

- Air Conditioning (B). Tinted glass recommended.
- Tinted Glass — Complete
- Flip-Up Open Air Roof (C)
- Bench Seat*
- Flight Bench Seat*
- Pivoting Manual Front Vent Windows. For sedans.

Convenience

- Console* (D). Features electronic digital clock with elapsed time and date readouts; graphic display warning module that indicates low fuel/low washer fluid, and signals when headlamp low beams/rear running lamps need replacement.
- Fingertip Speed Control (E)
- Tilt Steering Wheel*
- Quartz Electric (Sweepand) Clock*
- Electric Rear Window Defroster (F)
- Floor-Mounted Shift.* For automatic transmission with bucket seats.
- Instrumentation Group.* Includes tachometer, trip odometer; ammeter, temperature and oil pressure gauges.
- Illuminated Entry System. Lifting either driver or passenger door handle turns on interior lights and illuminates a ring around the door lock cylinders.
- Illuminated Visor Vanity Mirrors. See your Ford Dealer for availability.
- Light Group. Includes ashtray, glove box, engine and luggage compartment lights, dual beam map/dome light, and rear door courtesy light switches (4-door).
- Left-Hand Remote Control Mirror. For 2-door sedan.
- Dual Bright Remote Control Mirrors. For 2-door sedan.
- Interval Windshield Wipers

Power Assists

- Variable Ratio Power Steering
- 4-Way Power Seat Adjustment.* For bench or flight bench seat.
- Power Door Locks
- Power Decklid Release
- Power Side Windows*

Protection

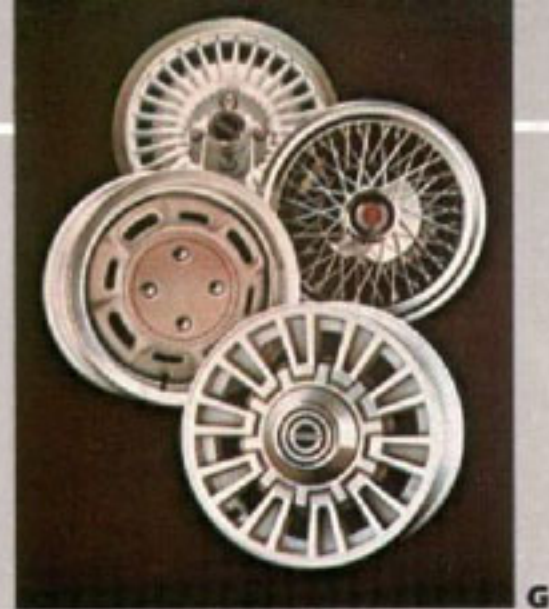
- Appearance Protection Group. Carpeted front floor mats, door edge guards, rear license plate frame.
- Lower Bodyside Protection. Application of vinyl under the paint along the lower bodysides to protect against stone pecking and road salt.
- Rocker Panel Moldings
- Rear Bumper Guards
- Bumper Rub Strips*

Performance

- 3.3 Liter (200 CID) Six-Cylinder Engine*
- SelectShift Automatic Transmission. Features new locking torque converter with 3.3 liter engine.
- Traction-Lok Axle*
- Heavy-Duty Battery
- Extended Range Fuel Tank (20 gallons)
- Handling Suspension.* Includes larger front stabilizer bar, rear stabilizer bar, stiffer spring rates, shock valving and lower arm bushings, plus 5-1/2-in. wheels.
- High Altitude Emissions System*
- California Emissions System*

Tires

- P175/75R 14" White Sidewalls
- P185/75R 14" White Sidewalls
- Michelin TRX P190/65R 390 black sidewalls.* Include TR-type aluminum wheels and special handling suspension components.
- Conventional Spare Tire*



Wheels/Wheel Covers (G)

From top to bottom:

- Turbine Wheel Covers
- Wire Wheel Covers
- Styled Steel Wheel with Trim Rings
- TR-Type Aluminum Wheels*

Also well worth considering . . .

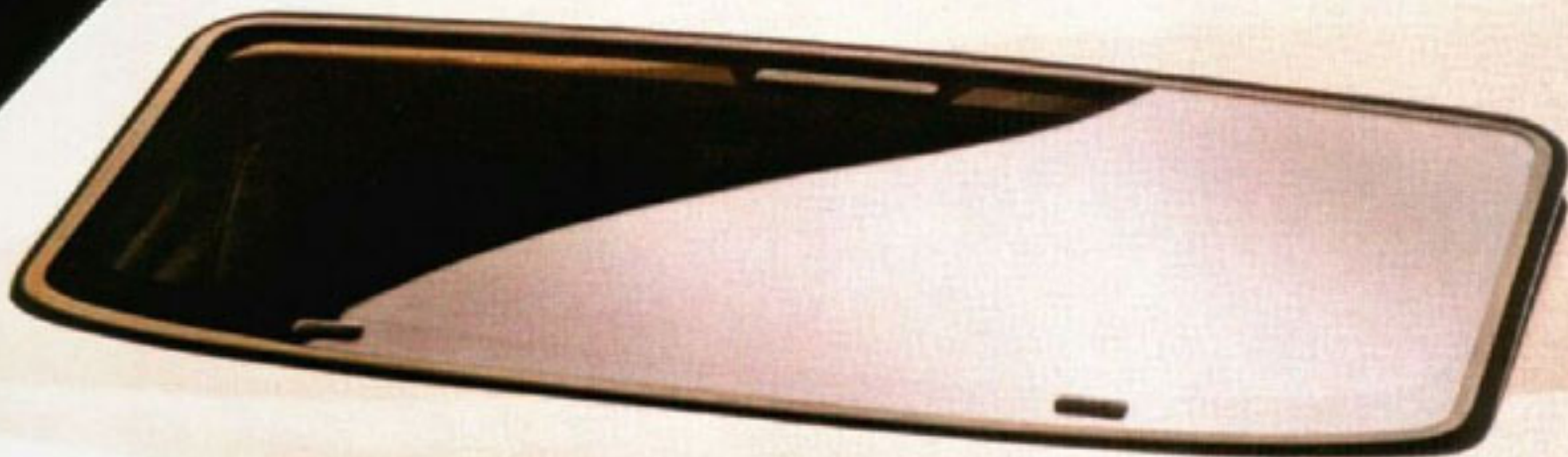


Ford Motor Company's Extended Service Plan. This option covers major components on new Ford cars and light trucks for longer than the vehicle's basic warranty. The Extended Service Plan's cost is so moderate for the protection you get that it could pay for itself the first time you need it. Your Ford Dealer will be happy to detail the Plan for you. It is available on all Ford cars and light trucks sold and normally operated in all 50 United States and Canada.

Options Availability

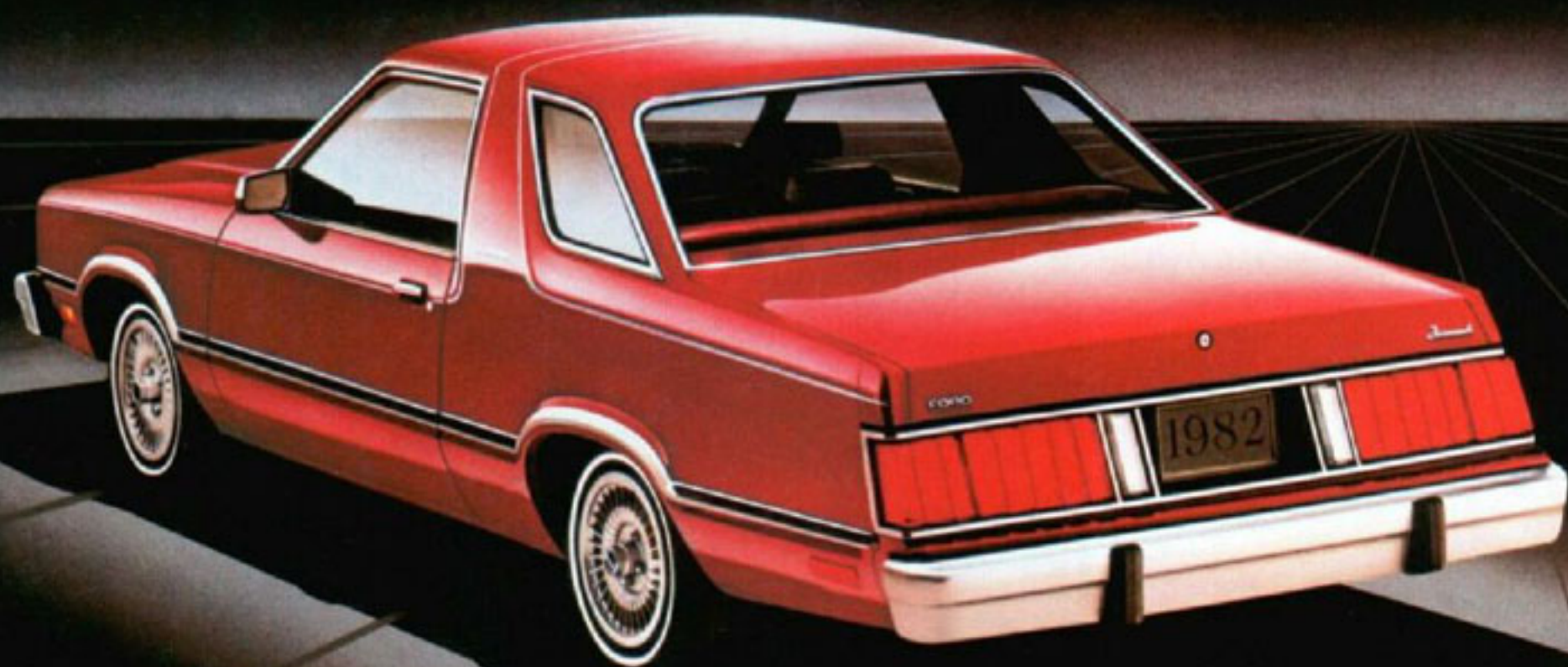
This year you can save money on the options you select for your new Futura by choosing one or more Value Option Packages. Pick Value Option Package No. 203A, for example, and five options — Tinted Glass, AM/FM Stereo Radio, Light Group, Interval Windshield Wipers and Bumper Rub Strips — are included at no extra charge. There are four Futura Value Option Packages in all, each offering you two or more no-extra-charge items when you buy the whole package. It's the smart, money-saving way to buy options — equipment items you'd probably select for your new Futura anyway. Be sure to ask your Ford Dealer for all the details on Value Option Packages.

1982 Futura options are not confined to these pages but are shown throughout the catalog. Options, whether or not they are identified, are offered at extra cost. Options designated by an asterisk (*) are offered either in combination with other options, or are subject to additional ordering requirements or limitations. Availability of some features described here and elsewhere may be subject to delay.



GO FOR A TEST DRIVE IN A 1982 FORD FAIRMONT FUTURA.

Buy or lease the new Futura today.



FORD FAIRMONT
FUTURA

FORD DIVISION

