

# LOOK OUT WORLD HERE COMES FORD

## Quality is Job 1.

At Ford Division, we believe our 1982 automobiles are the finest we have ever produced. This lineup of cars, from the sporty EXP to the elegant Thunderbird, with brand-new Escort 4-Door Hatchback and Granada Wagon models, represents the latest in technology and Ford engineering achievement. We invite you to test-drive the '82 Ford of your choice and judge for yourself the Ford commitment to quality.

- FORD EXP
- ESCORT
- GRANADA
- FORD LTD
- THUNDERBIRD
- FAIRMONT FUTURA
- MUSTANG





# 1982 FORD EXP

## For the two of you.

The sleek Ford EXP is a striking blend of sportiness, fun and high fuel efficiency. EXP is a "two seater" sport coupe for just the two of you.

EXP is one of the most aerodynamic cars built in America. That helps EXP deliver mileage estimates of 46 est. hwy. and 29 EPA est. mpg.\* Other major contributing factors:

The 1.6 liter CVH (compound-valve

hemispherical-head) engine and 4-speed manual overdrive transaxle. (Or you can choose the Ford-patented split-torque automatic transaxle.) High-strength steel's light weight contributes to fuel economy. State-of-the-art technology is evidenced in EXP's front-wheel drive, four-wheel independent suspension and rack and pinion steering, which contribute to a comfortable ride and precise handling. And in the rear, there's

29.3 cu. ft. of cargo space for whatever you want to take with you.

EXP is in tune with what today's driving is all about. Test drive EXP and sample the proof firsthand.

\*EPA estimates for comparison. Your actual mileage may differ depending on speed, distance and weather. Actual highway mileage will probably be lower.



Far Left: Ford EXP in Bright Blue Metallic.

Center: EXP low-back bucket seats in Black leather.

Left: CVH engine.  
Below: Ford EXP in Black.





# 1982 FORD ESCORT

## A Brand-New World Car.

Introducing the 1982 4-Door Hatchback. In this special World Car you'll find distinctive hatchback style and versatility plus the convenience for families that a 4-door provides. It's a car you'll want to see and drive.

Escort outsold all import car lines in its first year, and fuel economy has been a major factor in its success. Mileage estimates are impressive

—47 est. hwy. and **31** EPA est. mpg for the 1.6 liter CVH (compound-valve hemispherical-head) FS engine calibration and 4-speed manual overdrive transaxle.\* High-technology engineering has given Escort the room and fuel economy to compare with any of the most modern cars, foreign or domestic.

Escort features front-wheel drive for traction, four-wheel independent

suspension for a comfortable ride, precise rack and pinion steering and impressive rear seat room.

Choose from the all-new 4-door hatchback, 2-door hatchback and 4-door wagon models in a range of trim levels.

\*EPA estimates for comparison. FS figures applicable to sedans without power steering or AC. Your mileage may differ depending on speed, distance and weather. Actual hwy. mileage lower. Not available in Calif.



Far Left: Ford Escort GLX 2-Door Hatchback in Medium Yellow.

Left: GLX 4-Door Wagon in Bright Red.

Below: GLX 4-Door Hatchback in Bright Red.





# 1982 FORD GRANADA

## Something to arrive in.

Distinctive, clean lines on the outside surround a roomy interior where the emphasis is on comfort. And now, distinguished Granada styling is also available in two new wagon models, with optional Two-Way Liftgate and room for six or 73.6 cu. ft. of cargo area. Sedans feature the new deep-well trunk with 16.8 cu. ft. of cargo space.

Granada's fuel-efficient standard 2.3

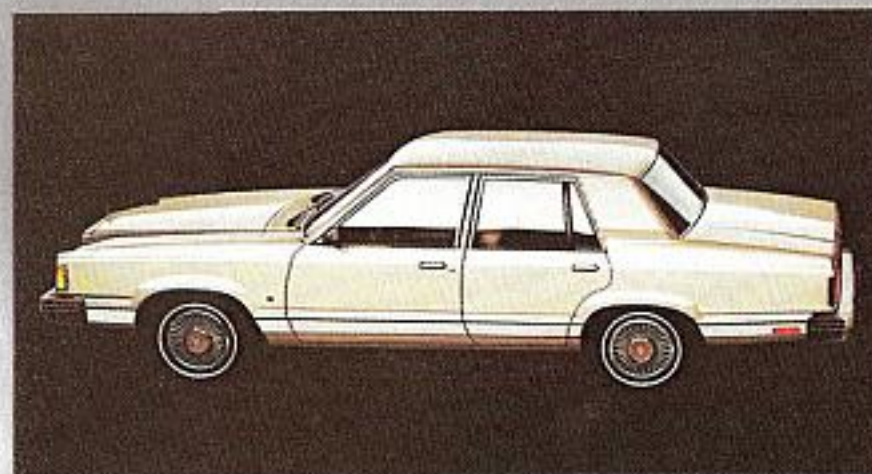
liter engine and 4-speed manual transmission boast mileage estimates of 33 est. hwy. and **22** EPA est. mpg.\* In addition, there are two optional 6-cyl. engines: the 3.3 liter "I" Six and an all-new 3.8 liter V-6 with the power of our small V-8.

The suspension system is a modified MacPherson strut design, recognized for its solid ride control, and a 4-bar link coil spring setup in the rear. Steering is the precise rack and

pinion type. Front disc/rear drum brakes are power-assisted.

Granada choices include the Granada L, GL and GLX series in both 2-door and 4-door models. The new Granada Wagon is available in the L and GL series.

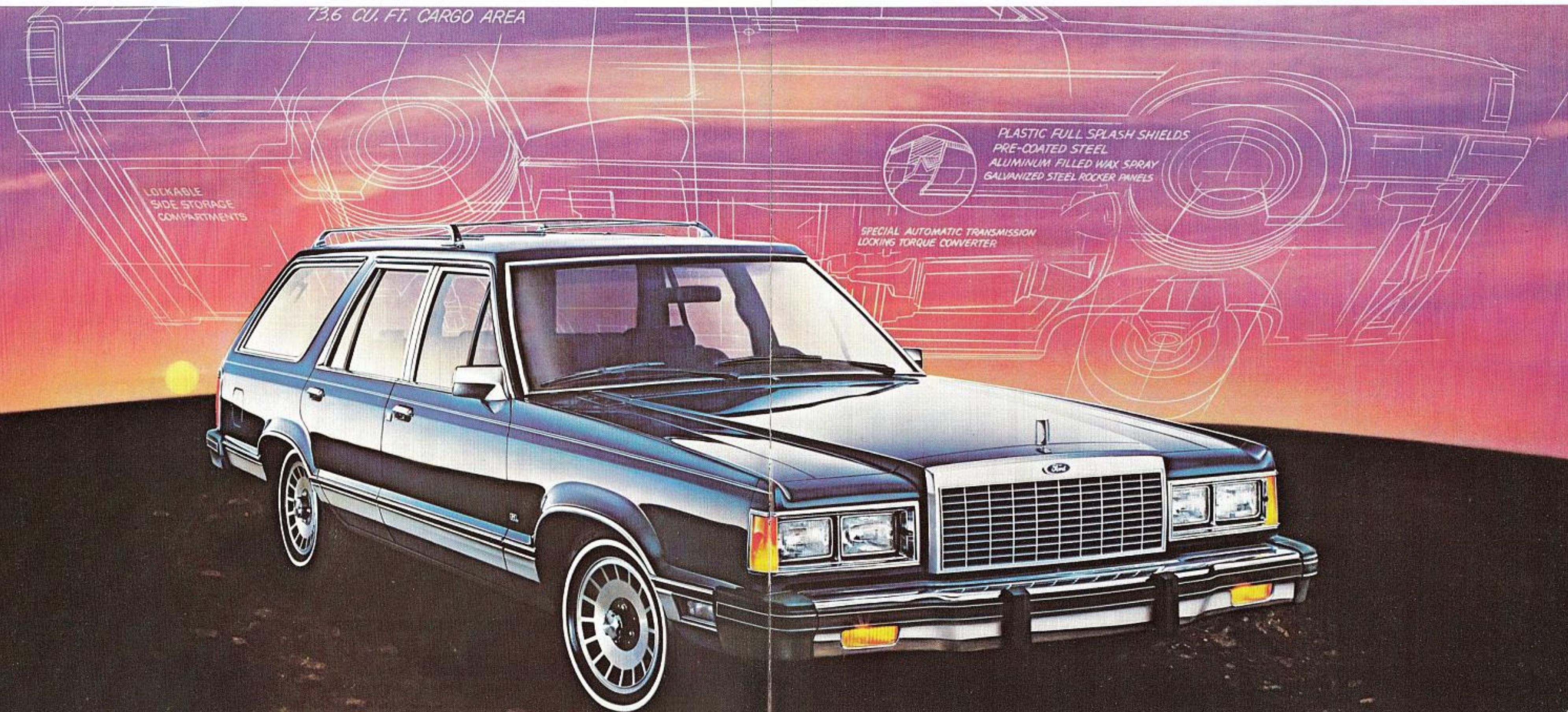
\*EPA estimates for comparison. Your actual mileage may differ depending on speed, distance and weather. Actual highway mileage will probably be lower. California estimates lower.



Far Left: Granada L 4-Door in Light Pewter Metallic.

Left: GLX split bench seats in Red cloth.

Below: Granada GL Wagon in Midnight Blue Metallic.





# 1982 FORD LTD

**The Automatic Overdrive comes standard. The highway mileage comes easy.**

For full 6-passenger comfort, roominess and a quiet ride, Ford LTD is your logical choice in 1982.

LTD was the first car in its class to offer the technologically advanced Automatic Overdrive transmission as standard equipment. This Ford advancement delivers substantially better fuel economy at speeds

above 40 mph than conventional automatics. Automatic Overdrive, teamed with the 4.2 liter V-8 engine, helps LTD achieve mileage estimates of 26 est. hwy. and **18** EPA est. mpg.\* The ride is pure LTD at its finest. Luxury sound insulation helps keep the world's noise outside. Power steering is standard, of course, as are power front disc brakes. LTD's deep-well trunk has over 22 cu. ft. of cargo space and a low liftover height.

Choose the 2-door or 4-door in the LTD or the top-of-the-line LTD Crown Victoria series. There's also the roomy LTD Wagon or the elegant Country Squire. Both offer nearly 90 cu. ft. of cargo space (with rear seat folded down).

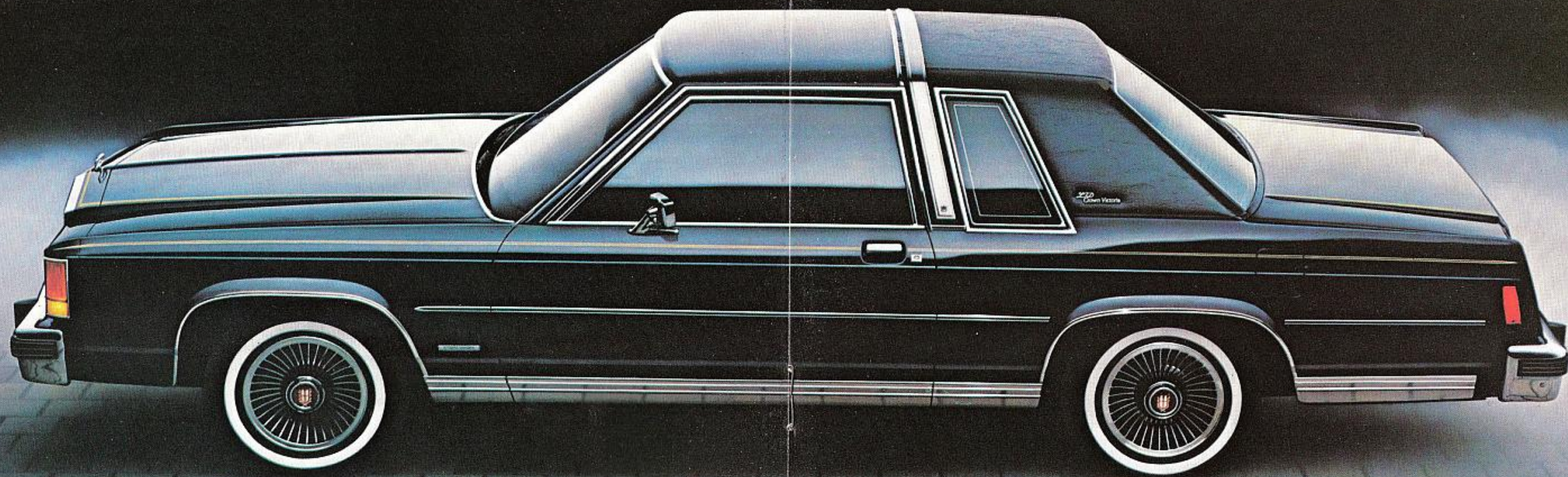
\*EPA estimates for comparison. Your actual mileage may differ depending on speed, distance and weather. Actual highway mileage will probably be lower. California and wagon estimates lower with standard 5.0 liter engine.



Far Left: LTD Crown Victoria 4-Door in Pastel Vanilla.

Left: LTD Crown Victoria split bench seats in Fawn cloth with Interior Luxury Group.

Below: LTD Crown Victoria 2-Door in Midnight Blue Metallic.





# 1982 THUNDERBIRD

## Technology and Innovation: That's our style for '82.

Out of the rich tradition of Thunderbird comes the 1982 model. In it is all of the sporty luxury, innovation and prestige you've come to expect from Thunderbird.

Thunderbird's new optional 3.8 liter V-6 engine, combined with Ford's innovative Automatic Overdrive transmission, offers mileage ratings of 30 est. hwy. and 19 EPA est.

mpg while providing the power of our small V-8.\* At about 45 MPH the Automatic Overdrive engages, cutting engine RPMs by about one third. This produces impressive highway fuel economy and reduces wear on engine parts.

Thunderbird's ride owes much to the MacPherson strut front suspension and 4-bar link rear suspension. Power front disc brakes and power-assisted variable ratio rack and

pinion steering are standard. You may select the distinctive Thunderbird series, the elegant Town Landau or choose Heritage, the ultimate Thunderbird, with a host of standard equipment features.

\*EPA estimates for comparison. Your actual mileage may differ depending on speed, distance and weather. Actual highway mileage will probably be lower.



Far Left: Optional electronic instrument cluster.

Left: Heritage split bench seats in Midnight Blue cloth.

Below: Thunderbird Town Landau in Tu-Tone Pastel Vanilla/Medium Vanilla with Vanilla vinyl roof.





# 1982 FORD FAIRMONT FUTURA

## A proven performer.

Practicality and real value were never more important—nor more evident—than in the 1982 Ford Fairmont Futura. Futura offers great economy and 5- or 6-passenger roominess, depending on your choice of seating.

The standard power team is the economical 2.3 liter engine and 4-speed manual transmission. This combination, with the FS engine calibration, produces mileage

estimates of 40 est. hwy. and **25** EPA est. mpg.\*

The '82 Futura has a new deep-well trunk with over 16 cu. ft. of space to carry your luggage or grocery bags upright. The standard equipment list also features MacPherson strut front suspension. Precise rack and pinion steering. Power front disc brakes. Fuel-stretching P-metric steel-belted radial ply tires. Dual rectangular halogen headlamps with whiter, brighter light than

conventional lamps. Attractive, comfortable low-back front bucket seats in soft vinyl and an AM radio (may be deleted for credit).

Fairmont Futura is available in both 2-door and 4-door sedan models and the 2-door coupe.

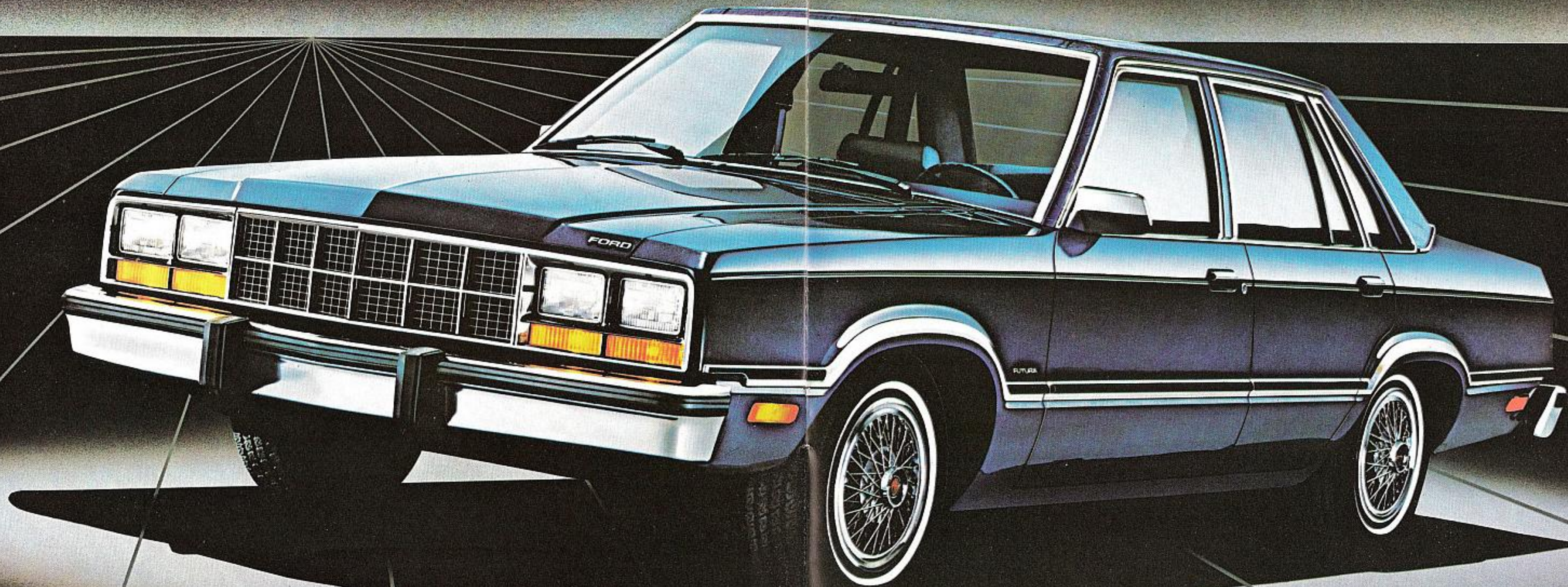
\*FS engine. Not available with air conditioning or power steering. Not recommended for hilly regions or carrying heavy loads. Not available in California. EPA estimates for comparison. Your actual mileage may differ depending on speed, distance and weather. Actual highway mileage will probably be lower.



Far Left: Luxury flight bench seat in Medium Wedgewood Blue cloth.

Left: Fairmont Futura 2-Door Coupe in Red.

Below: Fairmont Futura 4-Door Sedan in Dark Blue Metallic.





# 1982 FORD MUSTANG

## We've got you covered from simmer to sizzle.

The youthful enthusiasm of Mustang is as contagious in 1982 as ever. It combines sporty, sleek lines with excellent fuel efficiency.

Mustang posts mileage estimates of 40 est. hwy. and  $\boxed{25}$  EPA est. mpg with the 2.3 liter FS engine calibration and 4-speed manual transmission.\* And helping Mustang achieve this kind of fuel

economy is a sleek, aerodynamic shape that gives Mustang one of the lowest drag coefficients in the small sporty car class. An optional 5-speed manual transmission is also available.

Mustang, always a driver's car, has what it takes to make you sit up and take notice behind the wheel, starting with a full range of engine choices including the optional high-output 5.0 liter V-8. Rack and pinion

steering for quick, precise handling. Modified MacPherson strut front suspension and stabilizer bar.

You have a great choice of Mustang models. Both 2- and 3-door models come in a range of trim levels.

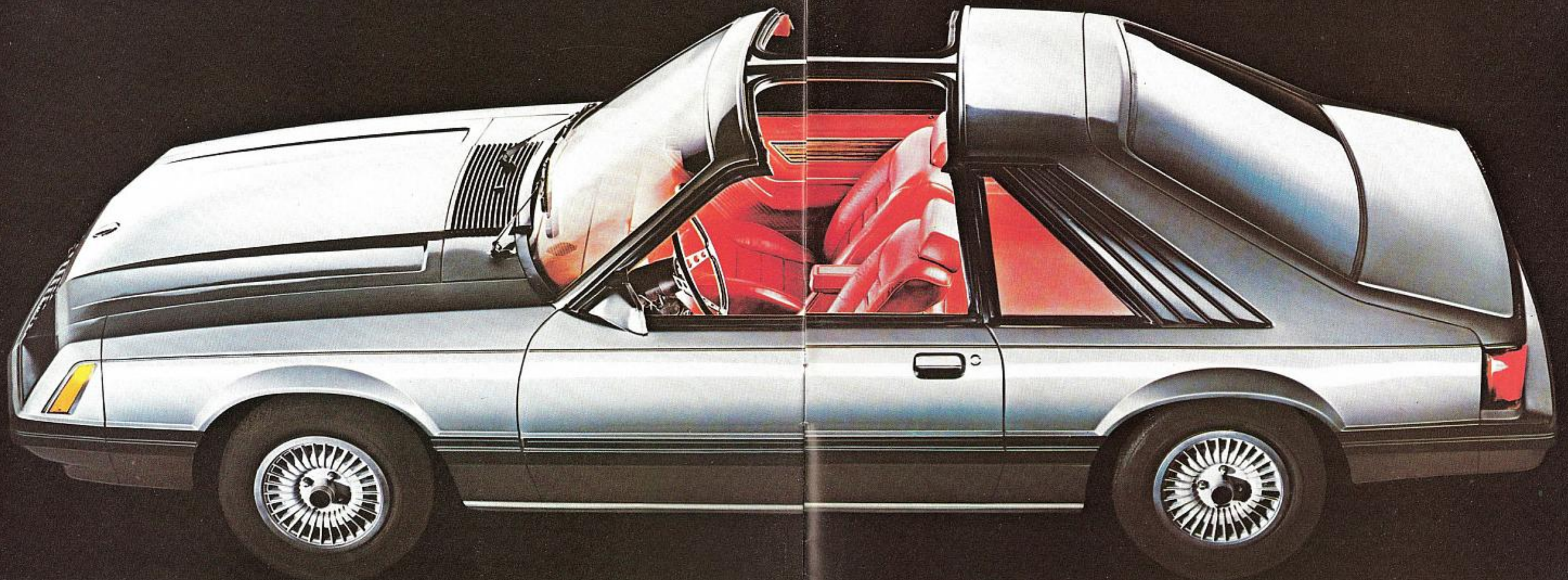
\*FS engine. Not available with air conditioning or power steering. Not recommended for hilly regions or carrying heavy loads. Not available in California. EPA estimates for comparison. Your actual mileage may differ depending on speed, distance and weather. Actual highway mileage will probably be lower.



Far Left: Mustang GT 3-Door in Red.

Left: Mustang GLX low-back bucket seats in Red leather.

Below: Mustang GL 3-Door in Medium Grey Metallic with T-Roof option.





# GO FOR A TEST DRIVE IN A 1982 FORD.

Buy or lease a new Ford today.

## OPTION AVAILABILITY

You can save money when you order Value Option Packages for your new Granada, Thunderbird, Ford LTD, Fairmont Futura, Mustang or Escort. See your Ford Dealer for details.

Some features presented are optional at extra cost. Some options are required in combination with other options. Availability of some models and features described may be subject to production delay. Ask your Ford Dealer for the latest information on options, prices and availability.

## PRODUCT CHANGES

Ford Division reserves the right to change product specifications at any time without incurring obligations.

## FORD-PAID REPAIR PROGRAMS AFTER THE WARRANTY PERIOD

Sometimes Ford offers adjustment programs to pay all or part of the cost of certain repairs. These programs are intended to assist owners and are in addition to the warranty or to required recalls. Ask Ford or your dealer about such programs relating to your Ford or Lincoln-Mercury vehicle.

To get copies of any adjustment program for your vehicle or the vehicle of interest to you:

Call Ford toll-free at 1-800-241-3673.  
Alaska and Hawaii call 1-800-243-3711  
and in Georgia call 1-800-282-0959.

Or write Ford at: Ford Customer  
Information System  
Post Office Box 95427  
Atlanta, Georgia 30347.

We'll need your name and address; year, make, and model vehicle, as well as engine size; and whether you have a manual or automatic transmission.

## TECHNICAL SERVICE BULLETINS

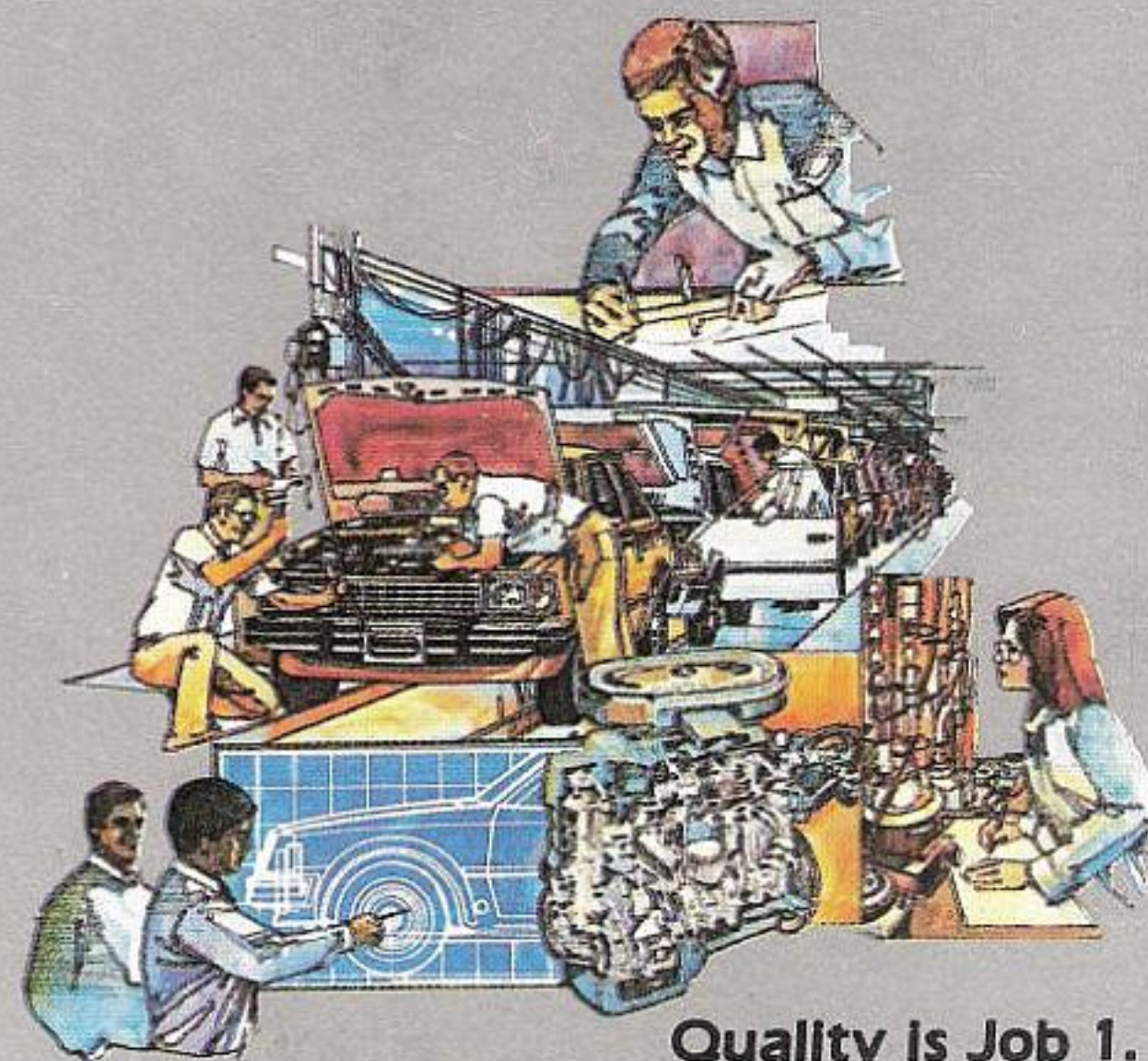
All vehicles need repairs during their lifetime. Sometimes Ford issues Technical Service Bulletins (TSBs) and easy-to-read explanations describing unusual engine or transmission conditions which may lead to costly repairs, the recommended repairs, and new repair procedures. Often a repair now can prevent a more serious repair later. Ask Ford or your dealer for any such TSBs and explanations relating to your Ford or Lincoln-Mercury vehicle.

To get copies of these Technical Service Bulletins and explanations for your vehicle or the vehicle of interest to you:

Call Ford toll-free at 1-800-241-3673.  
Alaska and Hawaii call 1-800-243-3711  
and in Georgia call 1-800-282-0959.

Or write Ford at: Ford Customer  
Information System  
Post Office Box 95427  
Atlanta, Georgia 30347.

We'll need your name and address; year, make, and model vehicle, as well as engine size; and whether you have a manual or automatic transmission.



Quality is Job 1.

# FORD

FORD DIVISION

