

Lured

in his first trout
with nothing but a worm
and a little encouragement.
Just the way my dad
taught me in that same
fishing spot.



2007 **FREESTYLE**



BOLD MOVES

2007 Freestyle

Act out your active life to the hilt with Ford's original crossover vehicle. On the surface, it's an enticing blend of sculpted aesthetics and refined athleticism, with a keen eye toward fuel efficiency. Its impressive 20 mpg city/27 hwy. fuel economy* outshines both Chrysler Pacifica and Buick Rendezvous.** Within, there's serious front-to-back seating for up to 7 friends and family members. And versatility borders on boundless. So hit the beach or the shopping district without thinking twice, because there's always room to spare. Major reasons why Ford Freestyle is just *your* style.

It's time to cross over

Best-in-class[†] fuel economy^{††}

Best-in-class 1st-row leg room

Best-in-class 2nd-row leg room

Best-in-class 3rd-row passenger room, including leg and head room

Best-in-class cargo capacity behind rows 2 and 3[§]

Class-exclusive, fold-down front-passenger seat

Highest government crash test safety ratings – 5 Stars in all 4 categories – from the National Highway Traffic Safety Administration (NHTSA)

High marks in NHTSA rollover resistance testing

Highest front and rear crash protection rating from the Insurance Institute for Highway Safety (IIHS)

Class-exclusive HALDEX[®] All-Wheel-Drive system, optional

Class-exclusive SPACE Architecture[™]

*EPA-estimated fuel economy for front-wheel-drive (FWD) models. **All equipped with FWD and a V6 engine (2006 EPA data). †Class is Medium V6 Crossover vehicles with 3rd row. ††Based on combined EPA-estimated fuel economy for Freestyle front-wheel-drive and All-Wheel-Drive versions. §Including seat well (5.0 cu. ft.).

HALDEX is a registered trademark owned by Haldex, AB.



BOLDMOVES

Live large

During Freestyle's development, premium passenger comfort and intuitive interior function were key goals. End result? Freestyle not only offers seating for up to 7, it also lays claim to the largest 3rd-row passenger volume in its class. And drawing on Ford's highly touted sport-utility DNA, Freestyle provides Command Seating™ up front. This elevated position literally raises the seats for exceptional driver visibility, while making entry and exit easier and more convenient. So no matter your stature, you'll be particularly comfortable behind the wheel. With extras like a power driver's seat, tilt steering column and available power-adjustable pedals, you'll always feel in charge.

Best-in-Class 3rd-Row Space. This is truly a space to savor, and not just because of its size. Reading lights, adjustable head restraints, cupholders, storage bins and a power point are close at hand.



6-Passenger or Supersized. In 6-passenger configurations, the 1st and 2nd rows are reclining bucket seats. If 7-passenger seating is preferred, a 3-person 60/40 split bench is optional for row 2 at no extra cost. Either 2nd-row seat style flips forward effortlessly for unhindered 3rd-row access.

In the Spotlight. Guests in the 2nd and 3rd rows are treated to a slightly rising roofline and theater-style seating — an elevated vantage point, with each row higher than the previous. All the better for you to see them with in the flip-down conversation mirror.

Classy Touches. The Limited model includes perforated, leather-trimmed* front seats featuring 2 heat settings. Plus, there are memory functions for the 8-way power driver's seat and the power, heated sideview mirrors.

*Vinyl 3rd-row seat.

Let the Starlight and Sunshine In. With one touch, fully retract the optional power moonroof's tinted-glass panel. Or simply tilt it up for an extra breath of fresh air.





Look, listen

Travel just wouldn't be the same without tunes, talk shows and traffic reports. Good thing Freestyle SEL comes standard with a stereo radio, CD player and speed-compensating volume. Limited owners are treated to an 8-speaker Audiophile® System with a 90-watt amplifier, subwoofer and a 6-disc in-dash CD player with MP3 capability. For the ultimate auditory effect, SIRIUS Satellite Radio* is now available as a factory option, offering you content and quality that AM/FM can't. Tap into more than 125 channels of digital-quality sound – including original, commercial-free music and world-class sports, news, talk and entertainment. Coverage is seamless across the continental U.S. And if that's not enough, a 6-month subscription to SIRIUS is also included in the price.

Get SIRIUS: Check out www.sirius.com. **SIRIUS**
SATELLITE RADIO

*See your Ford Dealer or contact SIRIUS at 1-888-539-7474 for more information.

Navigate Nationwide. Find out how best to get there with the available Navigation System (left). A large 6.5" color LCD screen displays a chosen map area. Select a destination, and Route Guidance provides audible and visual instructions. Miss a turn? Automatic Re-Routing devises a new course. There's an Address Book, and a Valet Mode lets you lock out the system to keep your travel plans private.

Smart Storage. A clever bin on top of the instrument panel keeps small items close at hand, yet out of sight. It's a perfect hiding spot for cell phones, PDAs and parking vouchers.



Entertainment on Board. For rear-seat guests, the optional DVD Family Entertainment Center features a 7" viewing screen, 2 wireless headphones, an infrared remote control, and a dual-media component that allows front-seat passengers to listen to the radio or a CD while the entertainment center plays.



Switch around

Again and again. Whether it's passengers or cargo, Freestyle quickly adapts. When you need to transport 6 or 7, Freestyle can accommodate the crowd and their carry-ons.

If you need to make way for a group of 4 or 5 (depending on your model), you'll still have a remarkable 47.4 cu. ft. of storage space to play with behind the 2nd row. Just fold the 3rd-row seat.

When long cargo is your challenge, Freestyle swallows up items as large as 10' in length when the front-passenger seatback is folded down. If you choose to put the front-passenger seatback up, there's still an astounding 86.1 cu. ft. of total cargo volume behind the 1st row. That's a number even SUVs like Jeep® Grand Cherokee and Chevrolet Trailblazer fall well short of.



Best-in-Class Rear Storage. Along with room for up to 7, Freestyle provides 20.7 cu. ft. of cargo capacity behind the 3rd row (includes 5.0-cu.-ft. seat well).




Fold It, Flip It, Fill It. With a purposeful design that's intuitive to use, Freestyle's 3rd-row seating transforms in no time flat. Simply find the numbered finger-pulls and give a tug. Finger-pull 1 folds the seat forward. Finger-pull 2 rotates the seat back toward the rear of the vehicle, where it fits neatly into the seat well. Fold the 2nd-row seatbacks forward while you're at it. Now Freestyle is ready for whatever you've got.



Power up

By pairing the torque-laden output of Freestyle's 3.0L Duratec 30 V6 engine with the Continuously Variable Transmission (CVT), every ounce of power works to your fullest advantage precisely when you need it. No matter the speed you're driving, the CVT will always seek out optimal torque. That's why Freestyle feels so responsive – you're never out of the torque band. With this advanced powertrain, you'll enjoy class-leading fuel economy* and smooth, lively acceleration. 203 hp and 207 lb.-ft. of torque have never felt this good.

*Based on combined EPA-estimated fuel economy for front-wheel-drive and All-Wheel-Drive versions.



Freestyle,
Be Nimble:
16:1 Steering
Ratio & 20'
Turning Radius

Best-in-Class Fuel Economy, *Plus.*

EPA-estimated fuel economy for Freestyle with front-wheel drive (FWD) is 20 mpg city/27 hwy. For All-Wheel Drive (AWD), it's 19 mpg city/24 hwy. In addition, the Duratec 30 V6 requires no scheduled tune-up until 100,000 miles, has a 150,000-mile drive belt, and its gaskets and seals are rated for 15 years of use. The CVT is maintenance-free for the first 60,000 miles. That's ease of ownership.



Look, No Gears. Unlike standard transmissions, the CVT has no gears. An intricate steel-link belt (shown right) connects 2 variable-size, high-strength steel-alloy pulleys. One pulley handles input from the engine while the other sends it to the drive wheels. The ratio of the 2 pulleys is continuously varied to keep your engine in its most efficient range, and your drive smooth and velvet-like. When more torque is needed for acceleration or to maintain speed up a steep hill, the transmission seamlessly responds by creating the right ratio from an infinite number of possibilities.



Go AWD

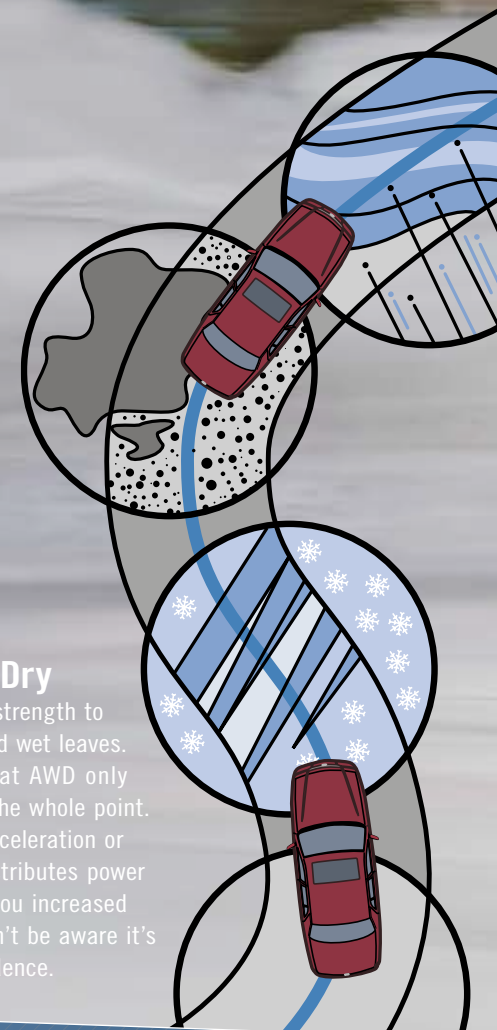
On any road. In any weather. During any maneuver. If anything compromises traction, nothing performs like optional All-Wheel Drive (AWD). When driving conditions are normal, AWD functions in front-wheel-drive mode. But as soon as a hint of wheel slip is detected, the class-exclusive HALDEX® AWD system immediately goes into action. Within milliseconds, power is passed to the wheels with the most traction. Traction Control works in concert with AWD, distributing up to 100% of the engine's available torque to a single wheel with the best grip. It's all about keeping you going where you want to go.

HALDEX is a registered trademark owned by Haldex, AB.



AWD at the Ready, Even on Dry Pavement.

The AWD system has the strength to plow through snow, mud, sand, gravel and wet leaves. But if you buy into the misconception that AWD only benefits you on slippery roads, you'll miss the whole point. Over varying road surfaces, during rapid acceleration or while cornering quickly, AWD seamlessly distributes power between the front and rear wheels to give you increased traction and performance. You probably won't be aware it's working – you'll just savor the added confidence.



Play safe

Freestyle has earned the highest crash test safety rating – 5 Stars – from the government’s National Highway Traffic Safety Administration (NHTSA) in all 4 categories: driver frontal impact, passenger frontal impact, front-seat side impact and rear-seat side impact. As if that wasn’t sterling enough, those 5-Star ratings were achieved without the available front-seat side airbags* in the mix. Freestyle also received top marks for SUVs in NHTSA’s rollover resistance testing. Even the Insurance Institute for Highway Safety chimed in, proclaiming Freestyle’s front and rear crashworthiness *Good* – the best rating possible.

*Part of the optional safety packages.

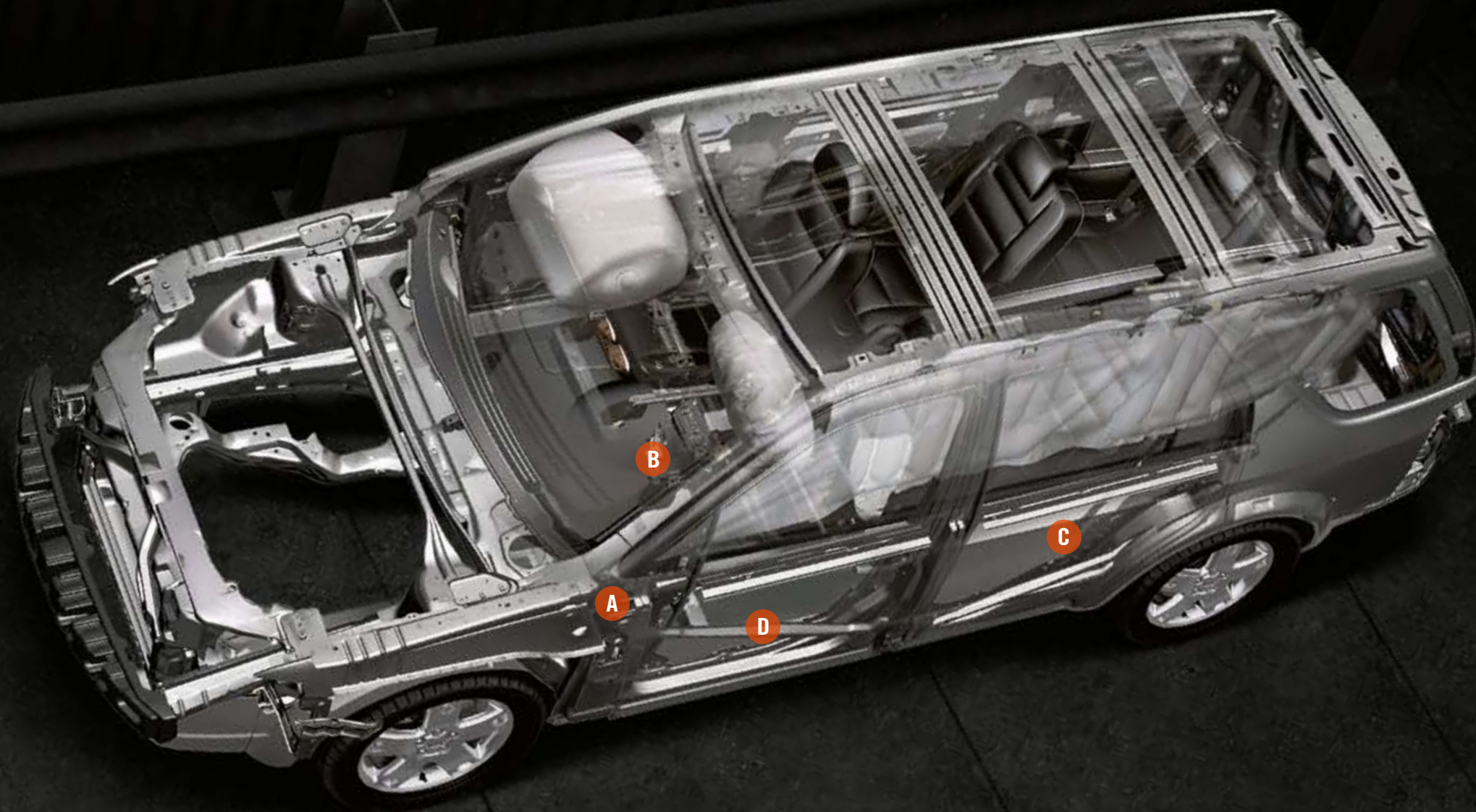


Personal Safety System® for driver and front passenger includes: dual-stage front airbags, safety belt pretensioners, safety belt energy-management retractors, safety belt usage sensors, driver’s-seat position sensor, crash severity sensor, restraint control module and Front-Passenger Sensing System.

The Safety Canopy™ System – With a Rollover Detection Sensor — is part of the optional safety packages, which include front-seat side airbags. The Safety Canopy’s side-curtain airbags provide outboard seating protection for all 3 rows.



Safety and Security Standards also include: 4-wheel disc brakes with an Anti-lock Brake System (ABS) and Electronic Brakeforce Distribution; keyless-entry keypad on the driver’s door; remote keyless illuminated entry; auto-dimming rearview mirror; message center with compass; battery saver; SecuriLock® passive anti-theft system; rear wiper/washer; child-safety rear door locks; and LATCH (lower anchors and tether anchors for child-safety seats). Traction Control comes standard on models equipped with All-Wheel Drive, and is optional on front-wheel drive.



Volvo-Inspired Chassis is the basis of Freestyle’s solid structure. Crash modeling on a Cray® supercomputer determined that mounting the front bumper plate only to the outer portion of the frame rails promotes a more even collapse of energy-absorbing structures and reduces passenger-compartment intrusion.

Cray is a registered trademark of Cray, Inc.

Ford Roadside Assistance is available 24 hours a day, 7 days a week at no charge during the New Vehicle Limited Warranty period. You can request a vehicle tow, a flat-tire change, a battery jump-start, fuel delivery and lockout assistance, among other things.

Honored throughout the U.S., Puerto Rico, Virgin Islands and Canada. See dealer for details.

- A The Tripod Design** in the front structure channels crash forces upward and downward into a high-strength steel “ring of protection” surrounding the passenger compartment.
- B An Adaptive Steering Column** minimizes the effect of crash forces, collapsing in different ways depending on the driver’s-seat position and safety belt status. On AWD models, even the patent-pending driveshaft is collapsible.

- C SPACE Architecture™** (Side Protection And Cabin Enhancement) is a class exclusive comprised of advanced structural elements — including a hydro-formed cross-car beam running between door frames to strengthen each bodyside. In a side-impact collision, a bend in that beam triggers its deformation to divert crash forces under the seats and away from occupants.
- D Side-Intrusion Door Beams** extend across the 2 strongest areas of the door frame, and laser-welded side pillars help redirect crash forces underneath the seats. In the rear, structural elements meet a stringent, future federal crash standard, now.



GENUINE FORD ACCESSORIES

ELECTROCHROMIC MIRROR WITH UNIVERSAL GARAGE DOOR OPENER

SIDE-WINDOW AIR DEFLECTORS

VEHICLE SECURITY SYSTEM

WRAPAROUND BUG SHIELD



Enhance Your Freestyle Experience With Genuine Ford Accessories.

Engineered by Ford for excellent fit and long-wearing durability, Genuine Ford Accessories offer you serious style and quality. When installed by your Ford Dealer at the time of purchase or lease, they're backed by a 3-year/36,000-mile limited warranty.* And now, Ford's vehicle Accessorizer puts personalization in the fast lane. This exciting new online tool lets you see how Genuine Ford Accessories will look on your Freestyle. Take it for a test drive at www.fordaccessoriesstore.com.

*12-month/12,000-mile limited warranty if Genuine Ford Accessories are not installed by a Ford Dealer or are purchased after initial vehicle sale or lease. See your dealer for details.

VEHICLE SECURITY SYSTEM



ELECTROCHROMIC MIRROR



TRUNK CARGO ORGANIZERS



SMOKER'S PACK WITH ASHCUP/COIN HOLDERS



WHEEL LOCKS



ALL-WEATHER VINYL FLOOR MATS



fordaccessoriesstore.com

MODEL LINEUP



SEL

select standard content:

- 4-Wheel Disc Anti-Lock Brake System
- Accent-Colored Cladding
- Body-Color Door Handles
- Chrome Grille Surround
- Power, Body-Color Sideview Mirrors
- Air Conditioning
- Auto-Dimming Rearview Mirror
- Leather-Wrapped Steering Wheel and Shift Knob
- Message Center with Compass
- Remote Keyless Illuminated Entry System with Driver's Door-Mounted Keypad
- Steering Wheel-Mounted Cruise and Audio Controls
- AM/FM Stereo with Single-CD Player and Clock
- 6-Way Power Driver's Seat with Manual Lumbar
- Command Seating™
- Theater-Style Seating
- 17" 5-Spoke Bright-Aluminum Wheels
- P215/65R17 Tires



LIMITED

includes SEL content, plus:

- Body-Color Cladding
- Fog Lamps
- Power, Heated Body-Color Sideview Mirrors with Memory and Security Approach Lamps
- Dual-Zone Electronic Automatic Temperature Control
- Memory Settings for Driver's Seat and Sideview Mirrors
- Outside Temperature Display
- Audiophile® 6-Disc In-Dash Sound System with Subwoofer
- Perforated Leather-Trimmed Seats (Vinyl 3rd Row)
- 8-Way Power Driver's Seat with Memory
- 4-Way Power Front-Passenger Seat with Manual Lumbar
- Heated Driver and Front-Passenger Seats
- 2nd-Row Comfort Seat Tracks with Forward/Back Adjustment (6-Passenger Only)
- 2nd-Row Floor Console (6-Passenger Only)
- 3rd-Row 50/50 Split Fold-in-Floor Bench Seat
- Woodgrain-Appearance Appliqué on Instrument Panel
- 18" 5-Spoke Bright-Aluminum Wheels
- P225/60R18 Pirelli Tires



Audiophile is a registered trademark of Audiophile, Inc.

www.fordvehicles.com

SPECIFICATIONS

STANDARD FEATURES

MECHANICAL

3.0L Duratec 30 DOHC 24-valve V6 engine
4-wheel disc Anti-lock Brake System (ABS)
Compact spare tire
Continuously Variable Transmission (CVT)
Front-wheel drive
Power rack-and-pinion steering

SAFETY/SECURITY

Personal Safety System® for driver and front passenger – Includes dual-stage front airbags,* safety belt pretensioners, safety belt energy-management retractors, safety belt usage sensors, driver's-seat position sensor, crash severity sensor, restraint control module and Front-Passenger Sensing System

Battery saver
Belt-Minder® safety belt reminder
Child-safety rear door locks
Illuminated entry
LATCH – Lower anchors and tether anchors for child-safety seats (2 in 2nd row; 1 in 3rd row)
Remote keyless-entry system with driver's door-mounted keypad
SecuriLock® passive anti-theft system
SPACE Architecture™ (Side Protection And Cabin Enhancement)

SEATING

Command Seating™
Theater-style seating
1st-row bucket seats with power driver's seat and fold-down passenger seat
2nd-row reclining 40/40 bucket seats
3rd-row fold-in-floor bench seat

INTERIOR

Accessory delay
Beverage holders – Up to 12 (depending on configuration)
Floor mats – 1st- and 2nd-row carpeted
Front floor console with armrest, storage, cupholders and air conditioning ducts for 2nd-row passengers
Front overhead console with lights, conversation mirror and sunglasses holder
Instrument panel storage bin
Instrumentation – Speedometer, tachometer, temperature gauge and fuel gauge
Power door locks and windows with one-touch-up/-down driver's-side window feature
Power points – 3
Reading lights – 2nd- and 3rd-row
Steering wheel-mounted cruise and audio controls
Sun visors with illuminated mirrors
Tilt steering column

EXTERIOR

Power, body-color sideview mirrors
Rear-window defroster and wiper/washer
Roof rack
Solar-tinted glass and privacy glass

*Always wear your safety belt and secure children in the rear seat.

ENGINE

	3.0L DURATEC 30 V6
Horsepower (hp @ rpm)	203 @ 5750
Torque (lb.-ft. @ rpm)	207 @ 4500

New Vehicle Limited Warranty

We want your Ford Freestyle ownership experience to be the best it can be. So under this warranty, your new vehicle comes with 3-year/36,000-mile Bumper-to-Bumper Coverage, 5-year/50,000-mile Safety Restraint Coverage, and 5-year/unlimited-mile Corrosion (Perforation) Coverage – all with no deductible. Please ask your Ford Dealer for a copy of this limited warranty.

Get the ride you want. Whether you plan to lease or finance, you'll find the choices that are right for you at Ford Credit. Ask your Ford Dealer for details, or check us out at www.fordcredit.com.

For a purchase or lease, the Ford Extended Service Plan (ESP) gives you "Peace-of-Mind" protection designed to cover key vehicle components and protect you from the cost of unexpected repairs. Ask your dealer for an ESP, the only service contract backed exclusively by Ford and honored at all Ford Lincoln Mercury dealerships.

Choose the insurance program that's designed for your vehicle – Ford Motor Company Insurance Services. Our program helps you receive the rates and service you deserve. Call 1-877-367-3847, or visit us at www.fordvip.com for a no-obligation quote. Insurance offered by American Road Services Company (in CA, American Road Insurance Agency), a licensed agency and subsidiary of Ford Motor Company.

Having a physical disability doesn't mean life can't be rewarding. In fact, for many thousands of Ford Motor Company customers, Ford Mobility Motoring has meant their lives can also be easier and more fulfilling. To request an information kit, learn about the Ford Mobility Motoring Process, and hear what customers say about the freedom and independence that adapted vehicles provide them, visit www.mobilitymotoringprogram.com.



FEATURES & OPTIONS

SEL

LIMITED

MECHANICAL

- All-Wheel Drive (AWD)
- Traction Control (standard on AWD)
- 17" 5-spoke bright-aluminum wheels
- 18" 5-spoke bright-aluminum wheels
- P215/65R17 tires
- P225/60R18 Pirelli tires

SEATING

- 2nd-row 60/40 split bench seat for 7-passenger seating
- 3rd-row 50/50 split fold-in-floor bench seat
- Heated front seats (requires Interior Convenience Group and Interior Power Package on SEL)
- Perforated leather-trimmed seats (vinyl 3rd row)

INTERIOR

- 2nd-row floor console with bucket seats
- All-weather floor mats
- Auxiliary climate control (requires Interior Convenience Group on SEL)
- DVD Family Entertainment Center with 2 wireless headphones (requires Interior Convenience Group on SEL, not available with SIRIUS Satellite Radio)
- Navigation System (requires Interior Convenience Group on SEL)
- Power moonroof
- SIRIUS Satellite Radio** (requires Interior Convenience Group on SEL, not available with DVD Family Entertainment Center)

EXTERIOR

- Chrome dual exhaust tips
- Reverse Sensing System (available only as part of the Limited Convenience Group on Limited)

PACKAGES

- Interior Convenience Group – Includes automatic headlamps, fog lamps, Dual-zone Electronic Automatic Temperature Control, outside temperature display, and AM/FM stereo/6-disc in-dash CD changer with MP3 capability and clock
- Interior Power Package – Includes 8-way power driver's seat, 4-way power front-passenger seat and power-adjustable pedals
- Limited Convenience Group – Includes power-adjustable pedals with memory, Universal Garage Door Opener, Reverse Sensing System and cargo net
- Safety Package – Includes front-seat side airbags and a 3-row Safety Canopy™ System with rollover sensor
- Safety and Security Package – Includes 3-row Safety Canopy System with rollover sensor, front-seat side airbags, anti-theft perimeter alarm, heated sideview mirrors and perimeter lighting

● Standard ○ Optional — Not Available

**SIRIUS not available in Alaska or Hawaii. See your Ford Dealer or contact SIRIUS at 1-888-539-7474 for more information. SIRIUS Satellite Radio, "SIRIUS" and related marks are registered trademarks of SIRIUS Satellite Radio Inc.

EPA-ESTIMATED FUEL ECONOMY

CVT with Front-Wheel Drive	20 mpg city/27 hwy.
CVT with All-Wheel Drive	19 mpg city/24 hwy.

DIMENSIONS

EXTERIOR	FWD/AWD
Overall length	200.1"
Wheelbase	112.9"
Overall width	74.9"
Overall height	68.3"
Front track	64.5"
Rear track	65.0"

INTERIOR	1st Row
Head room	39.4"
Shoulder room	58.4"
Hip room	55.5"
Leg room (max.)	41.2"

2nd Row	
Head room	39.7"
Shoulder room	57.9"
Hip room	56.0"
Leg room (max.)	40.4"

3rd Row	
Head room	38.6"
Leg room (max.)	33.3"

Seating Capacity

Behind 1st row	86.1
Behind 2nd row	47.4
Behind 3rd row	20.7 ¹

¹Including seat well (5.0 cu. ft.).

WHEELS



17" 5-Spoke Bright-Aluminum Standard on SEL



18" 5-Spoke Bright-Aluminum Standard on Limited

EXTERIORS



Oxford White^{††}



Dune Pearl Metallic



Redfire Metallic



Merlot Metallic[§]



Titanium Green Metallic



Dark Blue Pearl Metallic



Silver Birch Metallic



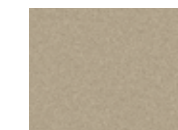
Alloy Metallic



Black

^{††}SEL only. [§]Limited only. Ford uses clearcoat paint for beauty and protection. Colors shown are representative only. Not all colors are available on all models. See your dealer for actual paint/trim options.

SEL LOWER CLADDING^{§§}



Arizona Beige Metallic



Charcoal Beige Metallic



Graphite Metallic



Light Gunmetal Metallic

^{§§}Lower cladding on Limited models matches exterior body color.

PAINT/CLADDING/INTERIOR COLOR COMBINATIONS

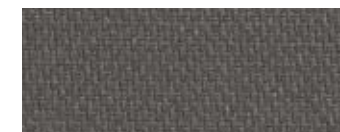
PAINT	CLADDING	INTERIOR COLOR		
		PEBBLE	SHALE	BLACK
Oxford White	Arizona Beige Metallic Graphite Metallic	SEL	SEL	
Dune Pearl Metallic	Charcoal Beige Metallic Dune Pearl Metallic	SEL Limited		Limited
Redfire Metallic	Charcoal Beige Metallic Light Gunmetal Metallic Redfire Metallic	SEL	SEL	Limited
Merlot Metallic	Merlot Metallic	Limited		Limited
Titanium Green Metallic	Arizona Beige Metallic Graphite Metallic Titanium Green Metallic	SEL Limited	SEL	Limited
Dark Blue Pearl Metallic	Charcoal Beige Metallic Light Gunmetal Metallic Dark Blue Pearl Metallic	SEL Limited	SEL	Limited
Silver Birch Metallic	Light Gunmetal Metallic Silver Birch Metallic		SEL	Limited
Alloy Metallic	Arizona Beige Metallic Light Gunmetal Metallic Alloy Metallic	SEL Limited	SEL	Limited
Black	Charcoal Beige Metallic Light Gunmetal Metallic Black	SEL Limited	SEL	Limited

Comparisons based on 2006 competitive models (Medium V6 Crossover class with 3rd row), publicly available information and Ford certification data at time of printing. Some features discussed may be optional. Vehicles shown may contain optional equipment. Features shown may be offered only in combination with other options or subject to additional ordering requirements or limitations. Dimensions shown may vary due to optional features and/or production variability. Following publication of the catalog, certain changes in standard equipment, options and the like, or product delays may have occurred which would not be included in these pages. Your Ford Dealer is the best source for up-to-date information. Ford Division reserves the right to change product specifications at any time without incurring obligations.

INTERIORS



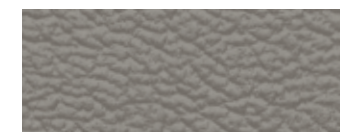
Pebble Cloth



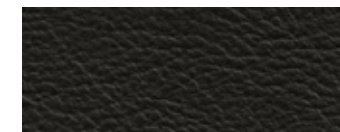
Shale Cloth



Pebble Leather



Shale Leather



Black Leather