



2013 Eos



Das Auto.



Executive shown in Candy White with rear lip spoiler

Something new under the sun.

Just when you thought you'd seen it all, here comes the Eos. It's the second generation of the world's only automatic folding hardtop convertible with a power sunroof. And it represents our best thinking and design to date. To top it off, it even seats four. So what does that give you? Essentially two cars in one. A stunning convertible and an equally breathtaking coupe. We'd call that a major coup for convertibles. And that's definitely not something you see every day. **That's the Power of German Engineering.**



2013 Eos

Style



Great style can come from anywhere. And it has the power to change anything. The Eos takes just 25 seconds to go from coupe to convertible. And about the same amount of time to alter your whole state of mind. But there's one thing that will never change: this car has style, everywhere you look.



Looking good. Nothing is less elegant than fishing your keys out of your jacket or purse. That's why the Eos has available keyless access with push-button start.* To keep you calm, cool, and connected.



Simply brilliant. Available Bi-Xenon headlights with LED Daytime Running Lights (DRL) and Adaptive Front-lighting System (AFS) add a bold look to the front end. And help you see things in a whole new light.



Custom tailored. The gorgeous interior is available with rich, supple Vienna leather seating surfaces. And since it has a 12-way power-adjustable driver's seat, it's sure to be the perfect fit.



Transform yourself. You see how graceful the Eos looks mid-transformation? We affectionately refer to that as the butterfly shot. It kind of gives us butterflies just looking at it.

*See back cover for important information on this feature.

From top to bottom.

Let's be honest, you're not always going to be driving with the top down. That's why we made the Eos just as exhilarating with the top up. Open the power sunroof if you want to let in some of the cool night air. Bask in the dual-zone climate-controlled interior that maintains a constant temperature and will automatically adjust if you decide to put the top down. The front seats can be adjusted in all sorts of ways. And if you start to feel the slightest chill, they're even heated. Top up or top down, the Eos has you covered.

Features

- Dual-zone automatic climate control
- Heated front seats
- Seating for four
- 12-way power-adjustable front seats*
- Leather seating surfaces*
- Passenger easy-entry feature*



Interior

*Feature available on select models.

Executive shown in Cornsilk Beige leather



Executive shown in Black Oak Brown Metallic with Cornsilk Beige leather



Entertainment center of the universe.

No matter where you're sitting in the Eos, you'll be at the center of it all. And you'll know it the second you turn on the touchscreen sound system. Hear that? That's HD Radio™ technology pumping through eight speakers. If you're craving your own playlist, pop in your favorite CD or plug in your iPod®. Then call up your friends with the touch of a button and a simple voice command to tell them how good you've got it.* Isn't it nice when the world and the sun both revolve around you?

Features

- Touchscreen sound system with HD Radio
- Rearview camera and Park Distance Control (PDC)**
- RNS 315 touchscreen navigation with 5-inch color display**
- Premium navigation with 4-year subscription to SiriusXM Traffic and 3-month trial subscription to SiriusXM Travel Link**

- Bluetooth® with audio streaming*
- MDI with iPod cable
- Multi-function steering wheel
- Dynaudio® premium sound system**

*Requires compatible device. **Feature available on select models.



Technology

2.0L

Turbo

200
horsepower

207
lbs/ft of torque

30
mpg*



The power behind the scenes.

Being a Volkswagen, it's only natural that the engine of the Eos would be just as invigorating as the scenery. And it's not just any engine. It's our most popular one—a turbocharged 2.0L with the perfect balance of power and efficiency.* Kick it into Sport mode for enhanced acceleration and response.** Enjoy the 6-speed DSG® automatic while you watch the glimmering city lights whiz by. Or push it into Tiptronic® so you can shift manually while you take on a picturesque country road. Any way you like it, just sit back and enjoy the show.

Features

- 200-hp turbocharged engine
- 6-speed DSG automatic transmission with Tiptronic and Sport mode
- Sport-tuned suspension†
- Electromechanical steering system
- Steering wheel-mounted paddle shifters†



Performance

*2012 2.0L TSI® DSG automatic transmission: 22 city/30 highway mpg EPA estimates. Your mileage will vary. **Always obey speed and traffic laws. †Feature available on select models.

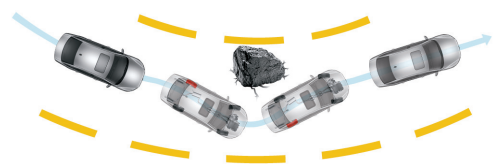


Executive shown in Salsa Red

Safety



You know that German engineering you admire under the hood? It's actually throughout the entire car. There are more than a dozen safety features specifically designed to help you prevent a collision. And even more to help protect you in the event of one. So no matter what happens, we'll do our best to help keep you safe.



Electronic Stability Control (ESC). ESC helps prevent oversteer or understeer during an evasive maneuver by applying corrective forces to each of the wheels. In other words, it helps you maintain control when you need it most.



Intelligent Crash Response System (ICRS). After the airbags* have deployed in a collision, the ICRS automatically unlocks all doors, disables the fuel pump, and turns on the hazard lights.** That's why we call it intelligent.



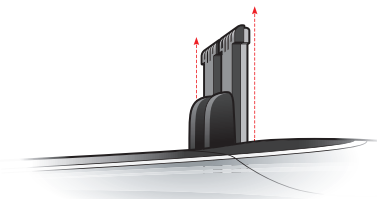
Tire Pressure Monitoring System (TPMS). The TPMS helps monitor tire pressure and alerts you when it is too low. Properly inflated tires greatly increase safety by helping create better stability, handling, and braking in almost all situations.



Surrounded by safety. In addition to airbags,* every Eos has a specially reinforced safety cage complete with hot-formed anti-intrusion side beams and A-pillars, designed to help protect you in the event of a collision. Surrounding that are crumple zones that provide space and material to help cushion and absorb the impact while the safety cage insulates you.



ABS and HBA. The Anti-lock Braking System (ABS) helps to keep the brakes from locking up during sudden stops and helps you retain control over the steering during emergency braking. Hydraulic Brake Assist (HBA) works with ABS to help ensure that you get the maximum braking power from the brake system.



Rollover protection. The Eos comes standard with a rollover protection system that automatically deploys hidden steel beams from behind the rear head restraints to help keep you and your passengers safe in the event of a rollover.

This is a dramatization and does not depict what will happen in a collision. All airbags will not inflate in real-world crashes, and if multiple airbags do deploy, they will be in various stages of inflating/deflating and will never all be inflated at the same time. *Airbags are supplemental restraints only and will not deploy under all crash circumstances. Always use safety belts and seat children only in the rear, using restraint systems appropriate for their size and age. **The Intelligent Crash Response System (ICRS) will only activate in a collision where the airbags deploy or safety belt pretensioners activate. Not all collisions cause airbags to deploy or safety belt pretensioners to activate.

Years **3** or
103 spontaneous
car washes

No-charge scheduled Carefree Maintenance.*

Changing your oil, rotating your tires, topping off the windshield wiper fluid—do you remember to do all that stuff? Your car does. Right there in your instrument panel. Both it and your dealer will let you know when it's time to schedule your appointment. And for three years, or 36,000 miles, we've got you covered. That's why we call it carefree. Come by for a courtesy vehicle check within the first 90 days, or 6,000 miles, and ask us any questions you have while we give your Eos a basic checkup. Then, come by every year, or 10,000 miles, for your remaining scheduled maintenance checks. It's that simple.

*The Volkswagen Carefree Maintenance Program covers the vehicle's scheduled maintenance for three years or 36,000 miles, whichever comes first. Coverage during the term of the new vehicle limited warranty at no additional charge. Some limitations apply. See dealer or vehicle maintenance program booklet for details.



Sport shown in Reflex Silver Metallic

Trims and Specs



Eos

Komfort

Includes: 2.0L, 200-hp TSI® engine; 17" Michigan alloy wheels with all-season tires; power retracting hardtop roof; power panoramic sunroof (tilting/sliding with manual sunshade); Climatronic® dual-zone automatic climate control; Bluetooth® with audio streaming;* Premium VIII touchscreen sound system with HD Radio,™ 8 speakers, MP3- and WMA-compatible in-dash 6-disc CD changer, AUX-in for portable audio players, and SiriusXM Satellite Radio with 3-month trial subscription; Media Device Interface (MDI) with iPod® cable; Matte Chromium interior trim; V-Text leatherette seating surfaces; 12-way power-adjustable driver's seat with power-adjustable lumbar support; 8-way manually adjustable passenger seat including manually adjustable lumbar support; easy-entry access to rear seating (power driver and manual passenger); heated front seats and washer nozzles; non-folding pass-through rear seats with lockable storage; front foglights with corner-illuminating feature; leather-wrapped multi-function steering wheel, shift knob, and brake handle; Electronic Stability Control (ESC); Anti-lock Braking System (ABS); Anti-Slip Regulation (ASR); Electronic Differential Locking (EDL); Tire Pressure Monitoring System (TPMS).

Sport

Includes Komfort features, plus: 18" Vicenza alloy wheels with all-season tires; sport suspension; black painted exterior mirrors; brushed aluminum appearance pedal covers; steering wheel-mounted paddle shifters; Bi-Xenon high-intensity headlights with LED Daytime Running Lights (DRL) and Adaptive Front-lighting System (AFS); headlight washer system; rear spoiler; Black Peak interior trim; LED license plate lighting.

Lux

Includes all Komfort features, plus: 18" Chicago alloy wheels with all-season tires; sport suspension; keyless access with push-button start;** Engineered Ebony interior trim; leather seating surfaces; self-dimming interior rearview mirror; Bi-Xenon high-intensity headlights with LED Daytime Running Lights (DRL) and Adaptive Front-lighting System (AFS); RNS 315 navigation system with 5" color touchscreen and SD memory card reader; 12-way power-adjustable front passenger seat with power-adjustable lumbar support; power easy-entry access to rear seating for front seats; rain-sensing wipers; heated power-folding mirrors with auto-dimming driver's side mirror; automatic headlights with Coming/Leaving Home feature; Park Distance Control (PDC) with rear proximity sensors and Trunk Lid Assistant; LED license plate lighting.

Executive

Includes Lux features, plus: 18" Kansas alloy wheels with all-season tires; RNS 510 navigation system with 6.5" color touchscreen in center console; SiriusXM Traffic™ with 4-year subscription and SiriusXM Travel Link™ with 3-month trial subscription and 30GB hard disk; Dynaudio® premium sound system; rearview camera.

Specifications

| Design | Komfort | Sport | Lux | Exec |
|---|---------|-------|-----|------|
| Halogen headlights with clear, lightweight, chip-resistant polycarbonate lenses and Daytime Running Lights (DRL) | ● | – | – | – |
| LED technology for rear marker, brake, and turn signal lights | ● | ● | ● | ● |
| Bi-Xenon high-intensity headlights with LED Daytime Running Lights (DRL) and Adaptive Front-lighting System (AFS) | – | ● | ● | ● |
| Halogen reflector lens foglights with corner-illuminating feature | ● | ● | ● | ● |
| Power-operated, heated side mirrors with integrated turn signals | ● | ● | – | – |
| Power-folding, heated side mirrors with integrated turn signals and auto-dimming driver's side mirror | – | – | ● | ● |
| Power tilting/sliding panoramic sunroof, with tinted glass and manual sunshade | ● | ● | ● | ● |
| CSC (Coupe-Sunroof-Convertible) automatic, multi-piece folding hardtop roof with heated rear glass window | ● | ● | ● | ● |
| 17" alloy wheels with anti-theft wheel locks | ● | – | – | – |
| 18" alloy wheels with anti-theft wheel locks | – | ● | ● | ● |
| Heated front windshield washer nozzles | ● | ● | ● | ● |
| Comfort | Komfort | Sport | Lux | Exec |
| Climatronic® dual-zone automatic climate control with pollen filter | ● | ● | ● | ● |
| Electric rear window defroster | ● | ● | ● | ● |
| Multi-function trip computer with compass, trip time, trip length, average trip speed, average trip fuel consumption, current fuel consumption, miles to empty, radio station display, personalizing function | ● | ● | ● | ● |
| 2 remote key fobs with lock, unlock, trunk release, and panic button | ● | ● | ● | ● |
| 2 12V power outlets: 1 in front center console, 1 in rear | ● | ● | ● | ● |
| Driver and passenger vanity mirrors, illuminated and with covers | ● | ● | ● | ● |
| 12-way power-adjustable driver's comfort seat, including 4-way power-adjustable lumbar support; 8-way manually adjustable passenger seat including manual lumbar adjustment | ● | ● | – | – |
| 12-way power-adjustable driver and passenger comfort seats, including 4-way power-adjustable lumbar support | – | – | ● | ● |
| Brushed aluminum appearance pedal covers | – | ● | – | – |
| Easy-entry front seats, power driver's seat adjustment | ● | ● | – | – |
| Power easy-entry driver and front passenger seats | – | – | ● | ● |
| Heated front seats | ● | ● | ● | ● |
| Rear center pass-through armrest, foldable and lockable, with storage compartment | ● | ● | ● | ● |
| 3-spoke, leather-wrapped, multi-function steering wheel | ● | ● | ● | ● |
| V-Text leatherette seating surfaces | ● | ● | – | – |
| Leather seating surfaces | – | – | ● | ● |
| Power windows with pinch protection; front windows with automatic 1-touch feature, operable from driver's side only | ● | ● | ● | ● |
| Technology | Komfort | Sport | Lux | Exec |
| Premium VIII touchscreen sound system with HD Radio, MP3- and WMA-compatible in-dash 6-disc CD changer, and 8 speakers | ● | ● | – | – |
| RNS 315 navigation system with 5" color touchscreen and SD memory card reader | – | – | ● | – |
| RNS 510 navigation system with 6.5" color touchscreen in center console, SiriusXM Traffic with 4-year subscription, SiriusXM Travel Link with 3-month trial subscription, SD memory card reader, and 30GB hard disk | – | – | – | ● |
| Dynaudio premium sound system, with 10 high-end speakers (4 tweeters, 2 midrange, 4 woofers), 600-watt amplifier and DSP (Digital Signal Processor) technology | – | – | – | ● |
| SiriusXM Satellite Radio with 3-month trial subscription | ● | ● | ● | ● |
| AUX-in for portable audio players | ● | ● | ● | ● |

| Technology cont. | Komfort | Sport | Lux | Exec |
|--|---------------------------|-------|-----|------|
| Media Device Interface (MDI) with iPod cable | ● | ● | ● | ● |
| Bluetooth with audio streaming* | ● | ● | ● | ● |
| Keyless access with push-button start** | – | – | ● | ● |
| Performance | Komfort | Sport | Lux | Exec |
| 2.0L TSI, 16-valve, DOHC, in-line 4-cylinder turbocharged engine with intercooler and direct fuel injection (FSI®); 200 hp, 207 lbs/ft of torque | ● | ● | ● | ● |
| 6-speed DSG® automatic transmission with Tiptronic® and Sport mode | ● | ● | ● | ● |
| Power-assisted front vented disc brakes and rear solid disc brakes | ● | ● | ● | ● |
| Electromechanical power steering with variable assistance and active return | ● | ● | ● | ● |
| Independent front MacPherson struts and rear independent 4-link suspension | ● | ● | ● | ● |
| Sport suspension | – | ● | ● | ● |
| Safety | Komfort | Sport | Lux | Exec |
| Anti-theft alarm system for doors, hood, trunk, and radio with audible and visual activation with Immobilizer III theft-deterrent system | ● | ● | ● | ● |
| Driver and passenger front airbag supplemental restraint system,† includes Passenger Occupant Detection System (PODS) | ● | ● | ● | ● |
| Driver and front passenger head/thorax side airbag supplemental restraint system† | ● | ● | ● | ● |
| 3-point safety belts for all seating positions, with safety belt pretensioners for front seats† | ● | ● | ● | ● |
| Automatic Rollover Support System behind rear head restraints | ● | ● | ● | ● |
| LATCH (Lower Anchors and Tethers for CHildren) child seat anchor points | ● | ● | ● | ● |
| Electronic Stability Control (ESC), Anti-Slip Regulation (ASR), Electronic Differential Lock (EDL), and Engine Braking Assist (EBA) | ● | ● | ● | ● |
| Anti-lock Braking System (ABS), Electronic Brake-pressure Distribution (EBD), and Hydraulic Brake Assist (HBA) | ● | ● | ● | ● |
| Intelligent Crash Response System (ICRS)†† | ● | ● | ● | ● |
| Tire Pressure Monitoring System (TPMS) | ● | ● | ● | ● |
| Quality | Komfort | Sport | Lux | Exec |
| 12-year/unlimited mileage Limited Warranty Against Corrosion Perforation | ● | ● | ● | ● |
| 5-year/60,000-mile (whichever occurs first) Powertrain Limited Warranty | ● | ● | ● | ● |
| 3-year/36,000-mile (whichever occurs first) New Vehicle Limited Warranty | ● | ● | ● | ● |
| 3-year/36,000-mile (whichever occurs first) Roadside Assistance‡ | ● | ● | ● | ● |
| 3-year/36,000-mile (whichever occurs first) no-charge scheduled Carefree Maintenance® Program‡‡ | ● | ● | ● | ● |
| Dimensions | | | | |
| Wheelbase | 101.5 inches (2,578 mm) | | | |
| Front track | 60.8 inches (1,545 mm) | | | |
| Rear track | 60.9 inches (1,547 mm) | | | |
| Length | 174.1 inches (4,422 mm) | | | |
| Width | 70.5 inches (1,791 mm) | | | |
| Height | 56.8 inches (1,443 mm) | | | |
| Cargo volume (with top raised) | 10.5 cu. ft. (0.29 cu. m) | | | |
| Cargo volume (with top stowed) | 6.6 cu. ft. (0.18 cu. m) | | | |

● Standard, at no additional cost

○ Optional, additional cost

– Not Available

*Requires compatible device. **See back cover for important information on this feature. †Airbags are supplemental restraints only and will not deploy under all crash circumstances. Always use safety belts and seat children only in the rear, using restraint systems appropriate for their size and age. ††The Intelligent Crash Response System (ICRS) will only activate in a collision where the airbags deploy or safety belt pretensioners activate. Not all collisions cause airbags to deploy or safety belt pretensioners to activate. †Roadside Assistance provided by Signature Motor Club, Inc., and Signature Motor Club of California, Inc. ††The Volkswagen Carefree Maintenance Program covers the vehicle's scheduled maintenance for three years or 36,000 miles, whichever comes first. Coverage during the term of the new vehicle limited warranty at no additional charge. Some limitations apply. See dealer or vehicle maintenance program booklet for details.

Wheels

Standard



Komfort 17" Michigan



Sport 18" Vicenza



Lux 18" Chicago



Executive 18" Kansas

Accessories

drivergear.vw.com



Pedal Caps



Lip Spoiler



Splash Guards



MojoMat®



Monster Mat®



Variety of MDI Cables for Digital Playback Devices



License Plate Frame

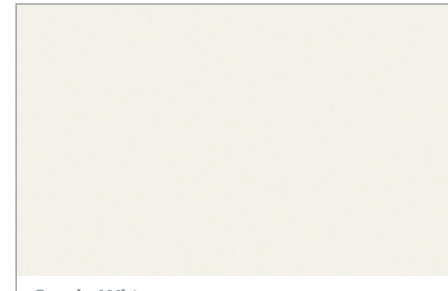


Custom Car Cover

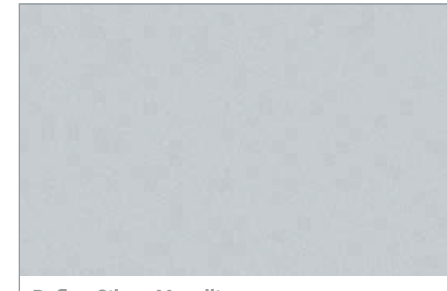


Trunk Liner

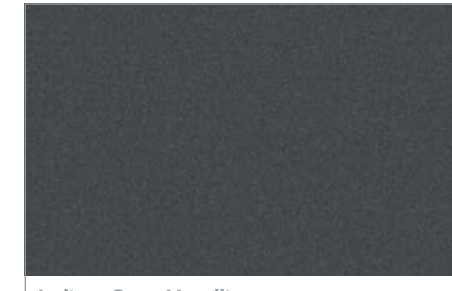
Exterior



Candy White



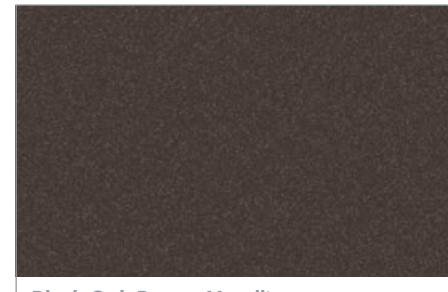
Reflex Silver Metallic



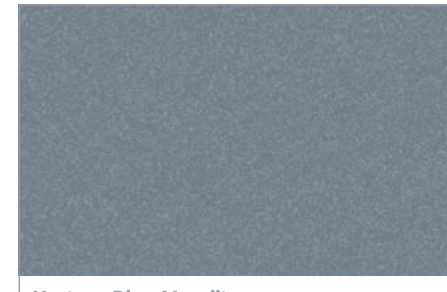
Indium Gray Metallic



Salsa Red



Black Oak Brown Metallic



Horizon Blue Metallic



Deep Black Pearl

Interior

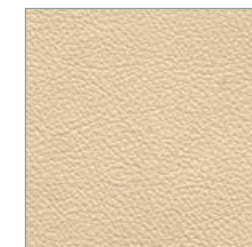
V-Tex Leatherette



Corn silk Beige



Titan Black



Corn silk Beige



Atlantic Blue*



Red



Titan Black

Leather



Das Auto.

2013 Volkswagen Family

Beetle



Passat



Jetta



Tiguan



CC



Golf



Jetta SportWagen



GTI



Touareg



Eos



Think Blue.®

Think Blue is the Volkswagen way to drive progress by creating and producing cars that are more efficient,* eco-conscious, and fun to drive. The Volkswagen line features a variety of BlueMotion® technologies—from TDI engines to precision fuel injection—designed to make our vehicles as blue as possible. Which is likely to make other car companies green with envy. Learn how we think beyond green at vw.com/thinkblue.

vw.com

©2012 Volkswagen of America, Inc. Printed in the U.S.A. Volkswagen of America, Inc. believes the specifications in this brochure to be correct at the time of printing. Specifications, standard equipment, options, fabrics, and colors are subject to change without notice. Some features may be unavailable when your vehicle is built. Some vehicles are pictured with options that may be available at extra cost or may not be available on some models. Ask your dealer about availability of options and verify that the vehicle you ordered includes the equipment you ordered. Tires are supplied and warranted by their manufacturer. "Volkswagen," the Volkswagen logo, "Das Auto," "Eos," "TSI," "DSG," and "Climatronic" are registered trademarks of Volkswagen AG. "Carefree Maintenance" is a trademark and the Carefree Maintenance logo and "Side Curtain Protection" are registered trademarks of Volkswagen Group of America, Inc. "Tiptronic" is a registered trademark of Dr. Ing. h.c. F. Porsche AG. "Dynaudio" is a registered trademark of Continental Audio Electronic GmbH. "Bluetooth" is a registered trademark of Bluetooth SIG, Inc., U.S.A. "iPod" is a registered trademark of Apple Inc. iPod is not included. Some Volkswagen models are equipped with a keyless ignition feature. The details as to how the system works can vary and Volkswagen owners should consult their owner's literature or an authorized Volkswagen dealer if they have further questions about the operation of this feature. Please note that Volkswagen warns against leaving the vehicle unattended with the engine running, particularly in enclosed spaces. Subscriptions to all SiriusXM services are sold separately after 3-month trial expires. SiriusXM Traffic service available in select markets. *If you decide to continue your Sirius service at the end of your complimentary trial, the self-paid plan you choose will automatically renew and bill at then-current rates until you call 1-888-539-7474 to cancel.* Sirius U.S. satellite service available only to those at least 18 years of age in the 48 contiguous United States, D.C., and Puerto Rico (with coverage limitations). Volkswagen DVD navigation depends on signals from the worldwide Global Positioning Satellite network. The vehicle's electrical system, and existing wireless and satellite technologies, must be available and operating properly for the system to function. The system is designed to provide you with suggested routes to addresses, destinations, and other points of interest. Changes in street names, construction zones, traffic flow, points of interest, and other road system changes are beyond the control of Volkswagen of America, Inc. Complete detailed mapping of lanes, roads, streets, toll roads, highways, etc., is not possible, therefore you may encounter discrepancies between the mapping and your actual location. Please rely on your individual judgment in determining whether or not to follow a suggested navigation route. Periodically the mapping is updated and a new DVD will be required in order to maintain the latest navigation information available to us. These will be available for purchase from time to time at additional cost. For further information regarding any Volkswagen model, please call 1-800-DRIVE-VW, or just look us up at vw.com. VW13ESBUS

*See www.fueleconomy.gov for EPA estimates. Your mileage will vary.