

Plymouth Valiant



THE ROARING '65s
FURY
BELVEDERE
VALIANT
BARRACUDA

Plymouth



Thinking of buying a compact car? Good. Obviously we don't have to tell you how economical most compacts are to operate, or how their prices start lower than the "big ones" . . . you've probably checked those practical things already . . .



But how about looks? Maybe you see yourself in a car with plenty of life and dash, something with a flair that most compacts don't have . . . And how about performance? Oh, sure . . . all compacts are okay for carting the kids to school or hauling the groceries home on Saturday. But how about a compact you can really open up? One that gives you free-wheeling handling ease, even in city traffic?

If only there were a compact that had it all —low cost, economy, life, guts, style, performance, class . . . Well, look no further. You're about to see the excitingly new 1965 Valiant. Amazing how all these things come in one compact package, isn't it?

VALIANT—THE COMPACT THAT HASN'T FORGOTTEN WHY YOU BUY A COMPACT



SIGNET

SIGNET STANDARD EQUIPMENT 170-cu.-in. 6-cylinder engine ■ Manual 3-speed transmission ■ Heater/Defroster ■ Front seat belts ■ Deluxe stainless steel wheel covers ■ All-vinyl, king-size bucket seats ■ Color-keyed, deep-pile carpeting ■ Fashionably tailored interior trim ■ Adjustable front seats (Also includes standard equipment listed for 200 and 100 models.)

POPULAR SIGNET OPTIONS High-performance Commando 273 4-bbl. V-8 engine ■ 3-spoke simulated wood steering wheel ■ Sporty "4-on-the-floor" manual transmission with Hurst linkage ■ New built-in fresh air conditioning system ■ Transaudio AM radio with antenna ■ Power steering ■ Remote-control sideview mirror ■ Windshield washers with variable-speed wipers (See page 12 for complete option listing.)

BASIC SPECIFICATIONS (2-door Hardtop)*

Overall Length	188.2 in.
Overall Width	70.1 in.
Overall Height	53.5 in.
Wheelbase	106.0 in.
Trunk Volume	14.1 cu. ft.
Wheel turns, lock to lock, power steering	3.5

(See page 14 for complete specifications.)

*Figures according to most recent A.M.A. standards of measurement.



Above: A Signet 2-door hardtop, shown here in Medium Blue Metallic, illustrates the big, sporty beauty to be found in the compact Valiant for '65. A new paint finish of acrylic enamel gives it a tough, chip-resistant surface and an easily renewable gloss.

Left: The luxurious, leather-like look of Signet's all-vinyl interiors is shown here in gold. Bucket seats are standard, the optional "4-on-the-floor" manual transmission with Hurst linkage adds a go-getting sports feel, too.



Who says a compact has to look "dull"? Certainly no one who sees this elegantly sporty Signet convertible!

Shown here in Copper Metallic with a handsomely contrasting black interior, it would be "at home" anywhere you park it—driveway or country club. And talk about performance! Well, you won't have to—others will do the talking after you've left them at the stoplight. No wonder people call Valiant "America's best all-around compact"!



VALIANT 200

VALIANT 200 STANDARD EQUIPMENT Heater/Defroster ■ 170-cu.-in. 6-cylinder engine ■ Biscuit pleated fabrics and full floor carpeting ■ Front seat belts ■ Manual 3-speed transmission ■ Front and rear armrests (ashtray in rear armrest) ■ Courtesy light (Also includes standard equipment items listed for 100 model.)

POPULAR 200 OPTIONS Commando 273 4-bbl. V-8 engine ■ Sports wheel covers ■ Three-spoke sports steering wheel ■ New built-in fresh air conditioning system ■ Sure-Grip differential ■ Manual "4-on-the-floor" transmission with Hurst linkage ■ Windshield washer with variable-speed wipers ■ Bumper guards ■ Transaudio AM radio with antenna (See page 12 for complete option listing.)

BASIC SPECIFICATIONS (4 Door Sedan)*

Overall length	188.2 in.
Overall width	70.1 in.
Overall height	53.5 in.
Wheelbase	106.0 in.
Trunk volume	14.1 cu. ft.
Wheel turns, lock to lock, power steering	3.5

(See page 14 for complete specifications.)

*Figures according to most recent A.M.A. standards of measurement.



Left: The Valiant 200 series boasts interiors of rich-feeling biscuit pleated fabrics and full floor carpeting. The red one pictured here boasts for itself.

Right: You'll probably wonder how a car as good looking as this Light Blue Valiant 200 convertible can save you so much money. Don't. Valiant is a proven leader in gasoline economy. Frankly, the beauty is just a standard "extra" on all Valiants.



Above: Performance, equal to that of many more expensive, larger cars, is just one of the many features you'll get in a Valiant 200 4-door sedan. This one, in Ruby, is typical of all the luxury you can expect in any Valiant 200. White side-wall tires are, of course, optional on all Valiant models.



Left: If it's true "handsome is as handsome does", this sleek Light Tan Valiant 200 2-door sedan will do just about everything you want very handsomely. Its comfort, utility and economy would be hard to match anywhere, and remember . . . the money you save will be your own!

VALIANT 100

VALIANT 100 STANDARD EQUIPMENT Heater/Defroster ■ 170-cu.-in. 6-cylinder engine ■ All-vinyl interior ■ Vinyl headlining and rubber floor mats ■ Safety-lock door latches ■ Directional turn signals ■ Courtesy lights ■ Concealed spare tire storage

POPULAR 100 OPTIONS 225-cu.-in. 6-cylinder engine ■ Trans-audio AM radio with antenna ■ TorqueFlite automatic transmission with column-mounted lever ■ Tinted glass windshield ■ Deluxe stainless steel wheel covers ■ White-wall tires ■ Windshield washers with variable-speed wipers ■ Day/nite rearview mirror (See page 12 for complete option listing.)

BASIC SPECIFICATIONS*

Overall length188.2 in.
 Overall width70.1 in.
 Overall height53.5 in.
 Wheelbase106.0 in.
 Trunk volume14.1 cu. ft.
 Wheel turns, lock to lock, power steering.....3.5
 (See page 14 for complete specifications.)
 *Figures according to most recent A.M.A. standards of measurement.



Above: It's a Valiant 100 2-door sedan, shown here in Medium Turquoise Metallic. It's also the most peppy, businesslike and good-looking car you're likely to find in a '65 at this bargain-low price. For roominess, performance and economy, you just can't beat it.

LEFT: All-new, all-vinyl interiors add extra wearability to the handsome Valiant 100 this year. This one, in blue, is just one example of how you can have your beauty and long wear, too.



Right: This Valiant 100 4-door sedan offers economical power at a price you'll have to see to believe. The color, White, is just the beginning of a long, long line of colors from which you can choose. But why don't you get behind the wheel? That's where the fun starts.



Above: Some people say that if you have taste, you don't need money. Well, let's admit it—you're going to need some to buy a new 1965 Valiant. But still, the adage has never been truer than it is about any of the 1965 Valiants. You could prove your good taste by buying this Dark Blue Metallic 2-door sedan . . . but then, you might prefer it in another color.

Right: The roomy Valiant 200 station wagon in Medium Tan Metallic.

Across Page: The logically lovely Valiant 100 wagon in Black.

Below: A peek-through view of a Valiant wagon's spacious storage space.

VALIANT WAGONS

WAGON STANDARD EQUIPMENT Equipment listed here is in addition to that listed under series for the respective models (200 and 100) on preceding pages. ■ Roll-down rear window
POPULAR WAGON OPTIONS Equipment listed here is in addition to that listed for the respective models (200 and 100) on preceding pages. ■ Roof luggage rack. ■ Power tailgate window. ■ Wind deflectors

WAGON SPECIFICATIONS
 (Cargo Compartment Dimensions)*
 (The following specifications apply to both the 200 and 100 models).
 Floor length—rear seat up, tailgate up51.8 in.
 Width max.52.6 in.
 Between wheel housings43.5 in.
 Height max.—floor to ceiling30.4 in.
 Rear opening width—max.43.3 in.
 Rear opening height26.1 in.
 Floor length, rear seat flat, tailgate up83.8 in.
 *Figures according to A.M.A. standards of measurement.



VALIANT GIVES YOU EASY TRAILER TOWING, TOO!

It's a natural... a peppy, powerful Valiant, the trailer of your choice (up to 2000 lbs. gross weight), and Valiant's new Trailer Towing Package, for the *easiest* trailer towing ever! Featuring torsion-bar suspension and high performance engines, Valiant has the power, directional stability, ride and handling qualities to make towing your trailer a safe and relaxing experience.

Included in Valiant's Trailer Towing Package are the following items:

High-capacity cooling system including: High-pressure radiator cap 16 psi—Large 17" fan—Fan shroud—Yoke-to-hood air seal.

Heavy-duty differential 3.23 ratio w/225-6 cyl. and V-8 engine, 3.55 ratio w/170-6 cyl. engine ■ Heavy-duty suspension front and rear with sway bar ■ Power brakes ■ 7.00 x 13 tires ■ Heavy-duty turn signal flasher ■ Heavy-duty stop lamp switch. NOTE: The above package applies to trailers with a maximum loaded gross trailer weight of 2000 lbs. The package is available only with an optional automatic transmission.

ADDITIONAL OPTIONAL RECOMMENDATIONS The following options will provide better performance and easier driving when pulling a loaded trailer.

Power steering ■ Spirited 225-cu.-in. 6-cylinder engine ■ Super 273-cu.-in. 2-bbl. V-8 engine ■ High-performance Commando 273 4-bbl. V-8 engine ■ 3.23 ratio Sure-Grip differential ■ High-output alternator—46 amp ■ Heavy-duty battery—70 amp-hour.

WHAT YOU SHOULD KNOW BEFORE YOU GO There is no special equipment required for light-duty towing, other than a well-secured hitch. It is recommended, however, that air pressure in all tires be increased 4 pounds over normal tire pressures.

Frame-type load-equalizing hitch must be used on trailers having a loaded tongue weight of 150 lbs. or more. Because of the varying types of hitches required for different hauling weights, none is included in this package. Consult your trailer dealer for the hitch required for your trailer hauling needs.

DRIVING TIPS FOR TRAILER TOWING Boat launching... always be sure to have your service dealer check the rear axle lubricant of your car if the rear axle should happen to submerge while launching a boat.

Cars with TorqueFlite... use the "2" speed when going up or down steep grades... this provides better pulling power and more effective downhill engine braking and engine cooling... it also reduces torque-converter action, improving gasoline economy.

Cars with Air Conditioning... the following precautions should be taken when pulling a trailer with an air-conditioned car on a hot day, if there is any evidence of engine overheating:

- When climbing hills, select a lower transmission gear.
 - While stopped in heavy traffic, put the transmission in neutral and idle the engine at a higher speed.
 - When cruising on the highway, reduce speed.
- NOTE: If the engine continues to overheat, shut off the air conditioner temporarily, until engine temperature returns to normal.

WHY A VALIANT IS YOUR BEST INVESTMENT IN DEPENDABLE, ECONOMICAL TRAILER TOWING

Instrument panel gauges for temperature, ammeter, and fuel are valuable aids when towing any trailer. They give the driver an instant check on the condition of his engine. This allows the driver to correct any situation before serious trouble occurs. Some competitive cars use warning lights for

temperature and battery charging rate, which only indicate when a failure has already happened.

■ Safety-Rim wheels are standard equipment. They help provide extra security in case of a blowout.

■ Wheel bearings and rear axles have sufficient capacity to handle the additional loads imposed by a trailer.

■ TorqueFlite transmission automatically provides the performance, economy and engine braking that trailer owners want. TorqueFlite will withstand heavier loads than manual-shift units and will permit the engine to operate at its most efficient speeds. It has a high ratio in low gear which permits the engine to develop more power at low car speeds where it is most useful for trailer towing. The transmission may be kept in low or second gear, for mountain driving or slow-moving traffic.

Trailer towing puts an extra load on the engine, transmission and rear axle of any car. These parts are warranted* for five years or 50,000 miles on your 1965 Valiant, when the car is equipped with the trailer towing package that meets the weight requirements specified in this brochure. It is recommended that the driving precautions contained in this brochure be followed to reduce the possibility of abnormal use.

*HERE'S HOW THE STRONG 5/50 WARRANTY PROTECTS YOU:

Chrysler Corporation warrants for 5 years or 50,000 miles, whichever comes first, against defects in materials and workmanship and will replace or repair at a Chrysler Motors Corporation Authorized Dealer's place of business, the engine block, head and internal parts, intake manifold, water pump, transmission case and internal parts (excluding manual clutch), torque converter, drive shaft, universal joints, rear axle and differential, and rear wheel bearings of its 1965 automobiles, provided the owner has the engine oil changed every 3 months or 4,000 miles, whichever comes first, the oil filter replaced every second oil change and the carburetor air filter cleaned every 6 months and replaced every 2 years, and every 6 months furnishes to such a dealer evidence of performance of the required service, and requests the dealer to certify (1) receipt of such evidence and (2) the car's then current mileage.

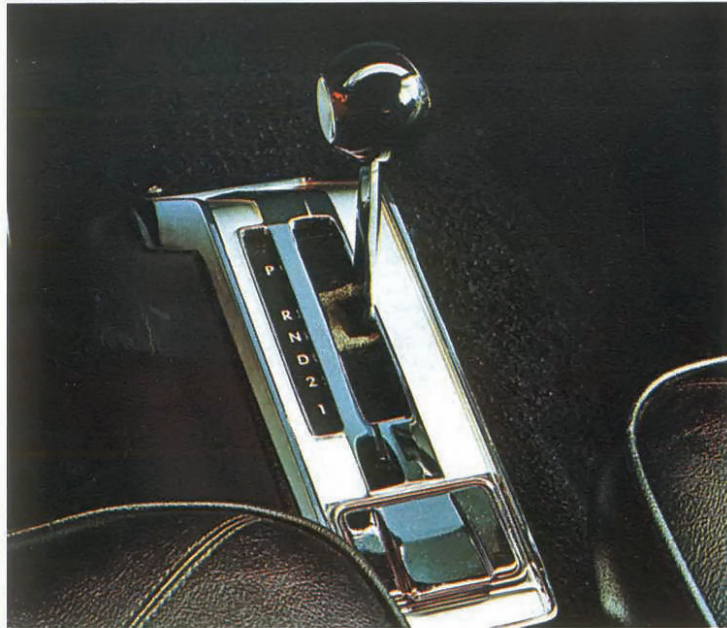




Convenient day/night mirror allows you to "turn off" annoying headlight glare from behind during nighttime driving.



Push button radio is fully transistorized for longer trouble-free operation. Provides instant sound at the touch of your fingertip.



Valiant Signet has an automatic TorqueFlite transmission with a console-mounted selector lever. Lever is column-mounted in Valiant 100, 200 models.



Driver can conveniently adjust mirror angle for best vision with this remote-control mirror. Control lever is located on the inside of the driver's door panel.



Luggage rack provides added carrying space—lets you keep more of the interior room to yourself. Adds a distinctive styling note to your wagon.

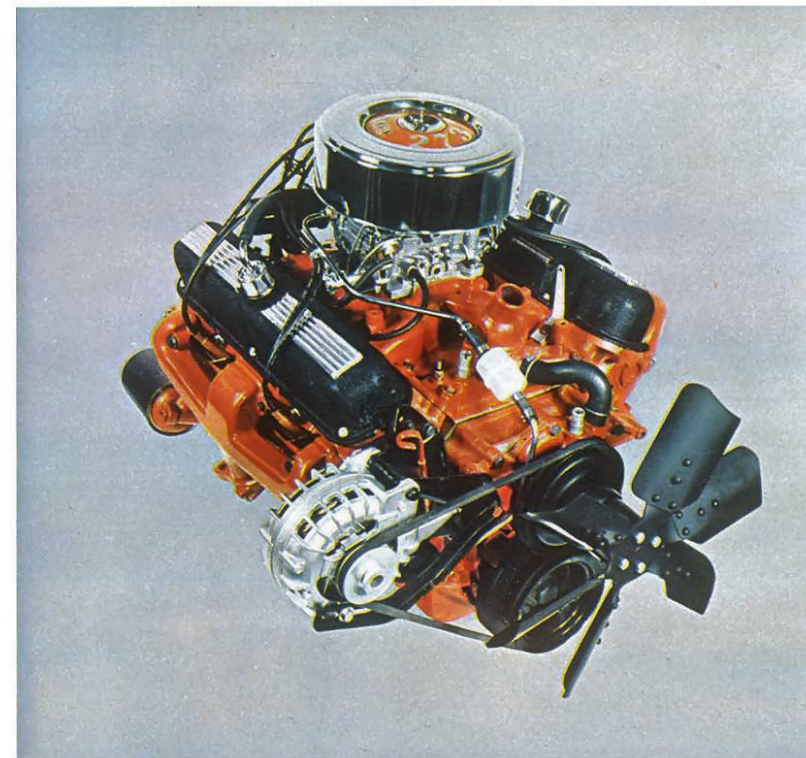


All-vinyl textured roof gives a custom look to the Signet hardtop. Available in black or white, it provides an attractive "convertible look" to your hardtop.

VALIANT OPTIONS

OTHER VALIANT OPTIONS AVAILABLE BUT NOT SHOWN HERE ARE:

- 273-cu.-in. 2-bbl. V-8 engine
- Power steering
- Power brakes
- Power tailgate window (wagons only)
- Power convertible top
- Wind deflectors (wagons only)
- Manual mirror, outside left
- Air foam front seat
- Bumper guards, front and rear
- Glass, tinted safety, all windows
- Glass, tinted safety, windshield
- Instrument panel, safety padded
- Seat belts, retractable
- Seat belts, rear
- Shock absorbers, firm ride, front and rear.
- Sure-Grip differential
- Trailer towing package
- Undercoating
- Wheelcovers, deluxe (std. on Signet)
- Windshield washers with variable speed wipers
- Whitewall tires



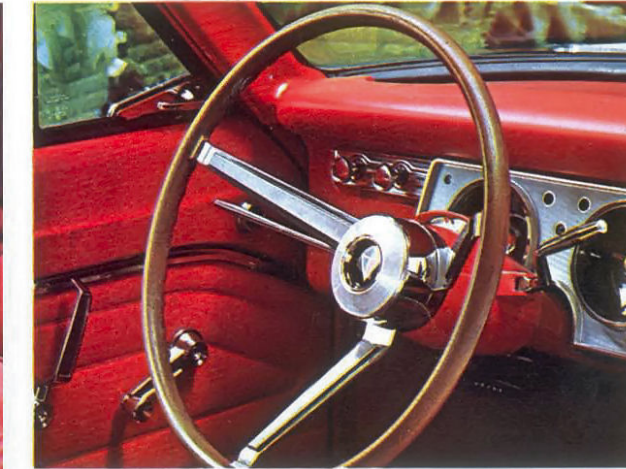
Featuring a four-barrel carburetor, long-duration camshaft, and special pistons to boost the compression ratio, this high-performance Commando 273 4-bbl. V-8 engine is for the swingers who want to put the "go" in g-o-n-e!



Your Valiant Signet or 200 can have an added sporty flair with this distinctive special racing-type wheel cover. A terrific track look!



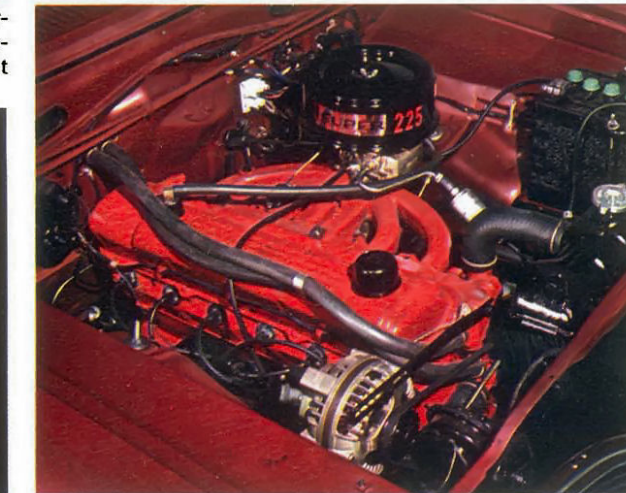
For those who like power at their fingertips, Valiant has a special, sporty "4-on-the-floor" manual transmission with Hurst linkage.



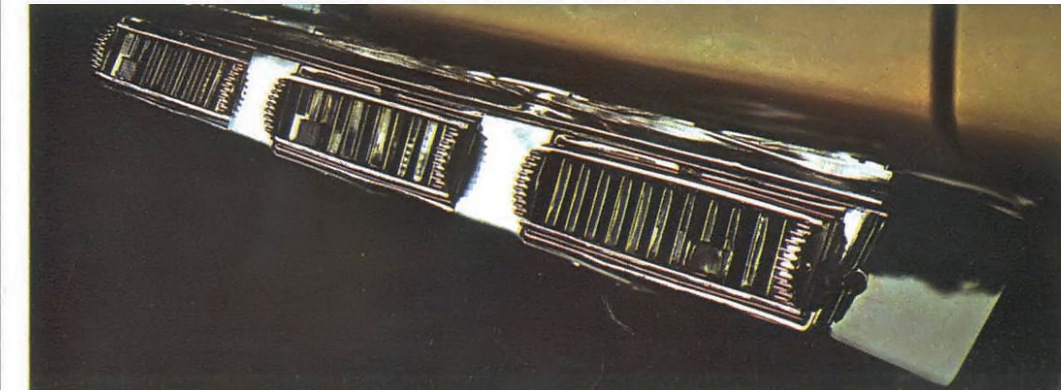
A sleek, sporty look can be added to the Valiant Signet or 200 with this wood-grained plastic steering wheel. Its clean, jet-age lines give a feel that says "go"!



Back-up lights combine illumination and a practical warning device for you and others.



A "6" engine that "goes like sixty"—the 225-cu.-in. 6-cylinder engine! Thrifty, peppy and economical. A Mobil Economy Run class champ, too.



A brand-new, fresh air conditioning system that actually improves cooling performance while giving front-seat riders more legroom than ever before. Area and spot cooling are easily achieved by means of fingertip, easy-to-reach controls.

1965 VALIANT SPECIFICATIONS

INTERIOR DIMENSIONS*	SEDANS	STATION WAGONS
Headroom, front	38.2 in.	38.2 in.
Headroom, rear	37.2 in.	37.6 in.
Legroom, front	40.1 in.	40.1 in.
Legroom, rear	35.0 in.	35.0 in.
Hiproom, front	56.9 in.	56.9 in.
Hiproom, rear	57.0 in.	57.0 in.
Seat height, front	8.0 in.	8.0 in.
Seat height, rear	11.6 in.	11.6 in.
Kneeroom	4.0 in.	4.0 in.
Trunk volume—sedans	14.1 cu. ft.	

EXTERIOR DIMENSIONS*	SEDANS	STATION WAGONS
Wheelbase	106.0 in.	106.0 in.
Tread, front	55.9 in.	55.9 in.
Tread, rear	55.6 in.	55.6 in.
Length, overall	188.2 in.	188.8 in.
Width, overall	70.1 in.	70.1 in.
Height, overall	54.4 in.	54.5 in.

SELF-ADJUSTING BRAKES
 Four-wheel hydraulic, internal-expanding, duoservo with self-energizing shoes. Molded asbestos lining, bonded shoes. Size: 9 x 2 1/2 inches, front, 9 x 2 inches, rear. Lining area: 153.5 square inches.

SUSPENSION
 Fronttorsion bars and ball joints
 Rear2 1/2-inch outboard-mounted asymmetrical leaf springs
 Shock absorbersOriflow type

6-CYLINDER ENGINE
 Horsepower101 at 4400 rpm
 Torque, Lbs-Ft155 at 2400 rpm
 Compression ratio8.5 to 1
 Bore, inches3.40
 Stroke, inches3.125
 Displacement, cubic inches170

ELECTRICAL SYSTEM
 Heavy-duty, 12-volt, 38-ampere-hour battery with 170-cu.-in. 6-cylinder engine. Chrysler Corporation alternator with high charging rate at low engine speeds.

REAR AXLE
 TypeHotchkiss drive, hypoid rear axle
 Ratio with manual transmission3.23 to 1
 Ratio with automatic transmission3.23 to 1
 (170-cu.-in.-6-cylinder engine)

TIRES AND WHEELS
 Safety-Rim wheels with low-pressure tubeless tires. Wheels are 13 x 4 1/2 inches with 6.50 x 13 tires standard on all 6-cylinder models, 7.00 x 13 tires on 8-cylinder models.

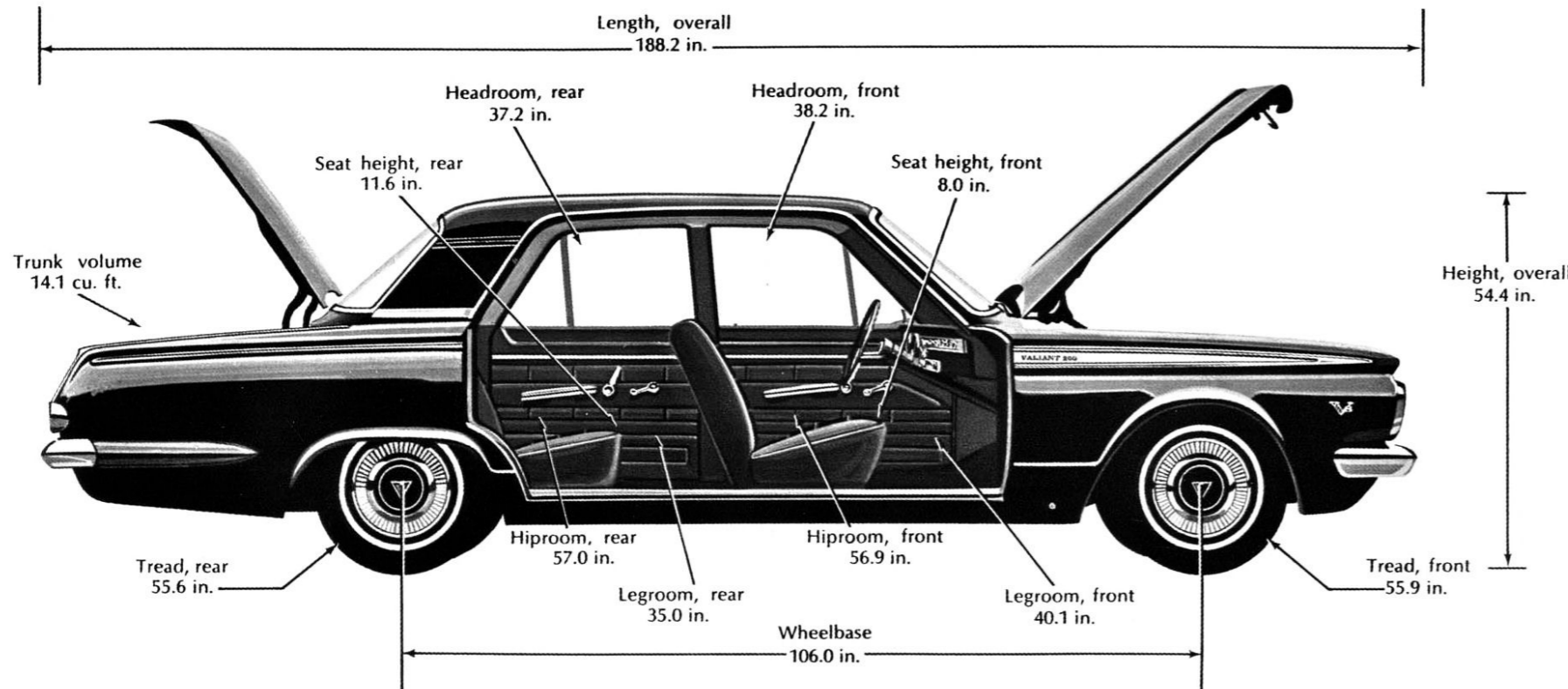
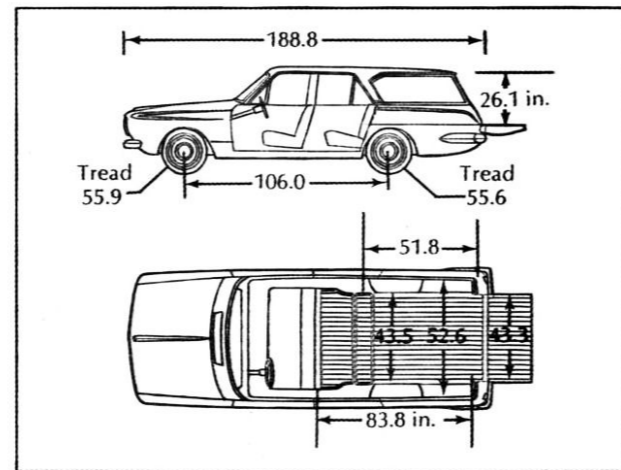
CAPACITIES
 Fuel Tank18 gallons
 Cooling System12 quarts
 Engine crankcase4 quarts

The policy of Chrysler Corporation is one of continual improvement in design and manufacture wherever possible to assure a still finer car. Hence, specifications, equipment, and prices are subject to change without notice. Automobiles pictured show optional equipment items. Product information published herein, while correct at time of publication, is subject to change.

THE NEW PLYMOUTH VALIANT—QUALITY-ENGINEERED BY CHRYSLER CORPORATION

STATION WAGON CARGO COMPARTMENT DIMENSIONS*
 Floor length—rear seat up, tailgate up51.8 in.
 Width Max.52.6 in.
 Between wheel housings43.5 in.
 Height max.—floor to ceiling30.4 in.
 Rear opening width—max.43.3 in.
 Rear opening height26.1 in.
 Floor length, rear seat flat, tailgate up83.8 in.

*Figures according to most recent A.M.A. standards of measurement.



SIGNET
 All Vinyl (Black)—A,B,C,
 D,E,H,J,K,L,P,S,T,W,X,Y,N†



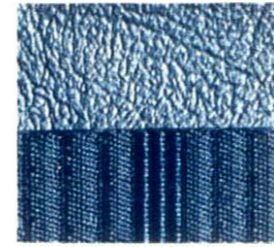
SIGNET
 All Vinyl (Blue)
 B,C,D,E,W,N†



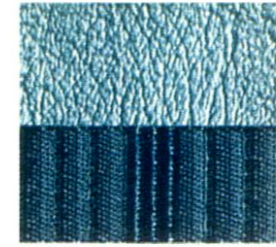
SIGNET
 All Vinyl (Gold)
 A,B,S,W



SIGNET
 All Vinyl (Red)
 B,P,T,W,N†



VALIANT 200
 Cloth & Vinyl (Blue)*
 B,C,D,E,W



VALIANT 200
 Cloth & Vinyl (Turq.)*
 B,J,K,W



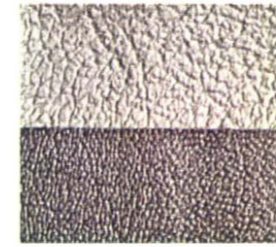
VALIANT 200
 Cloth & Vinyl (Red)*
 B,P,T,W



VALIANT 200
 Cloth & Vinyl (Tan)*
 B,S,W,X,Y



VALIANT 200
 All Vinyl (Red)**
 B,P,T,W



VALIANT 200
 All Vinyl (Tan)**
 B,S,W,X,Y



VALIANT 200
 All Vinyl (Blue)**
 B,C,D,E,W



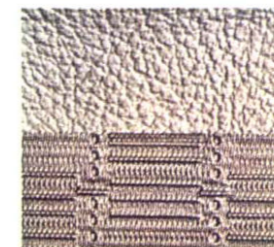
VALIANT 200
 All Vinyl (Turq.)**
 B,J,K,W



VALIANT 100
 All Vinyl (Blue)
 B,C,D,E,W



VALIANT 100
 All Vinyl (Red)
 B,P,W



VALIANT 100
 All Vinyl (Tan)
 B,J,K,W,X,Y

A Gold Metallic



B Black



C Light Blue



D Med. Blue Metallic



E Dark Blue Metallic



H Copper Metallic



J Light Turquoise



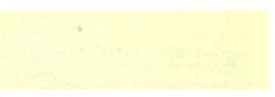
K Med. Turq. Metallic



P Ruby



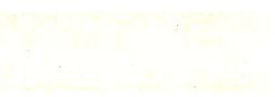
S Ivory



T Med. Red Metallic



W White



X Light Tan



Y Med. Tan Metallic



N Barracuda Silver Metallic



1965 VALIANT COLORS

TWO-TONE COLORS (EXTRA COST) TOP COLOR/BASIC COLOR:

- Light Blue/Med. Blue Metallic
- White/Med. Turquoise Metallic
- White/Med. Blue Metallic
- White/Ruby
- Med. Blue Metallic/Dark Blue Metallic
- White/Med. Tan Metallic
- Light Turquoise/Med. Turquoise Metallic
- Light Tan/Med. Tan Metallic

NOTE:—Black and white convertible tops are available with all exterior colors. Blue convertible top is available whenever blue trim or black trim with blue exterior color is specified.

*Std. on 2-door sedan, 4-door sedan, station wagons.
 **Std. on 200 convertibles, optional on 4-door sedans and wagons.
 †Extra-cost option.

**HERE'S THE NEW, 1965 VALIANT'S 5-YEAR/50,000-MILE
ENGINE AND DRIVE TRAIN WARRANTY*. READ HOW IT HELPS
PROTECT THE PARTS THAT WILL KEEP YOUR VALIANT GOING
...AND GOING!**

***HERE'S HOW THE STRONG 5/50 WARRANTY PROTECTS YOU:** Chrysler Corporation warrants for 5 years or 50,000 miles, whichever comes first, against defects in materials and workmanship and will replace or repair at a Chrysler Motors Corporation Authorized Dealer's place of business, the engine block, head and internal parts, intake manifold, water pump, transmission case and internal parts (excluding manual clutch), torque converter, drive shaft, universal joints, rear axle and differential, and rear wheel bearings of its 1965 automobiles, provided the owner has the engine oil changed every 3 months or 4,000 miles, whichever comes first, the oil filter replaced every second oil change and the carburetor air filter cleaned every 6 months and replaced every 2 years, and every 6 months furnishes to such a dealer evidence of performance of the required service, and requests the dealer to certify (1) receipt of such evidence and (2) the car's then current mileage.