

1975 FORD EXPLORER

LIMITED
TIME SALE



Limited Time Sale... Regular & SuperCab Pickups



Explorer SuperCab in Mexicali Red

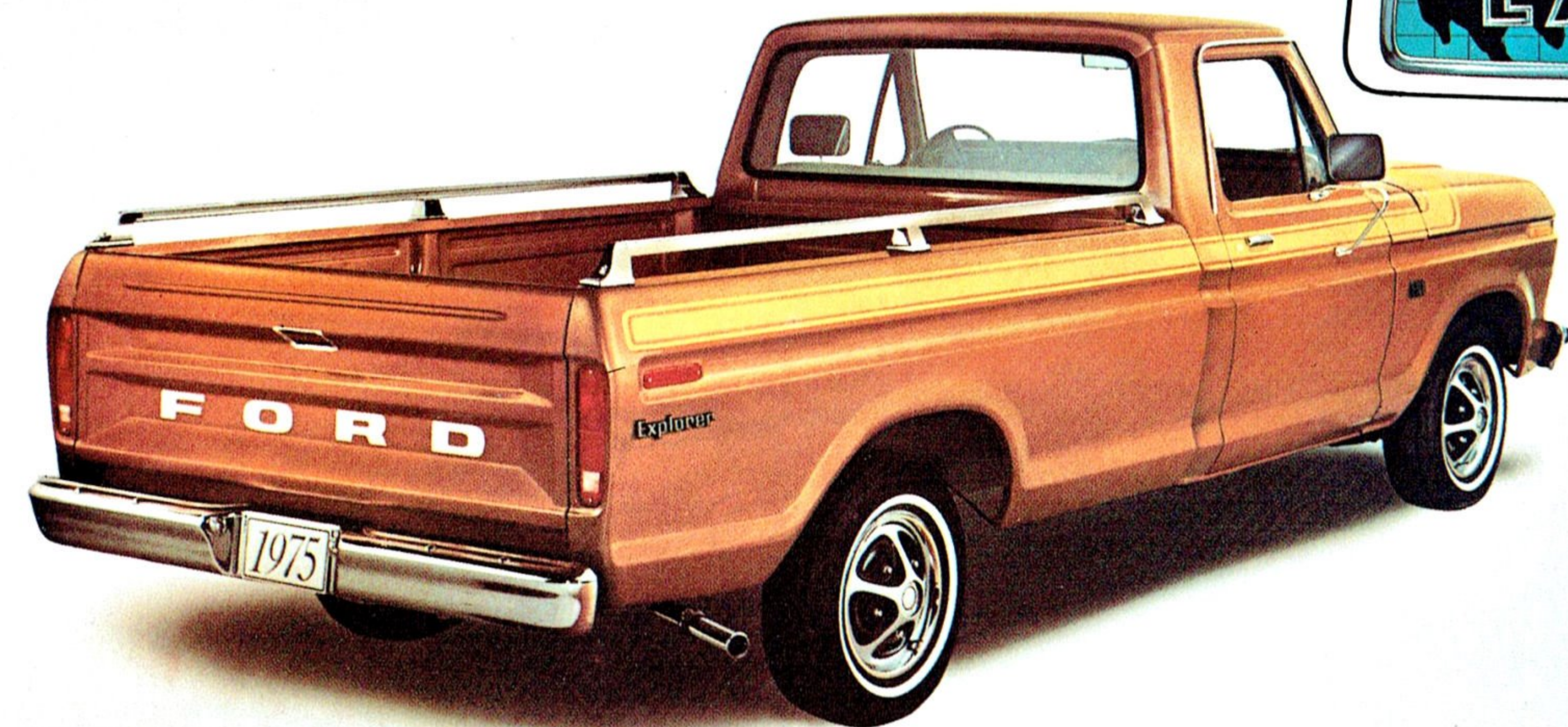
**PRICE
REDUCED
\$19700***



on

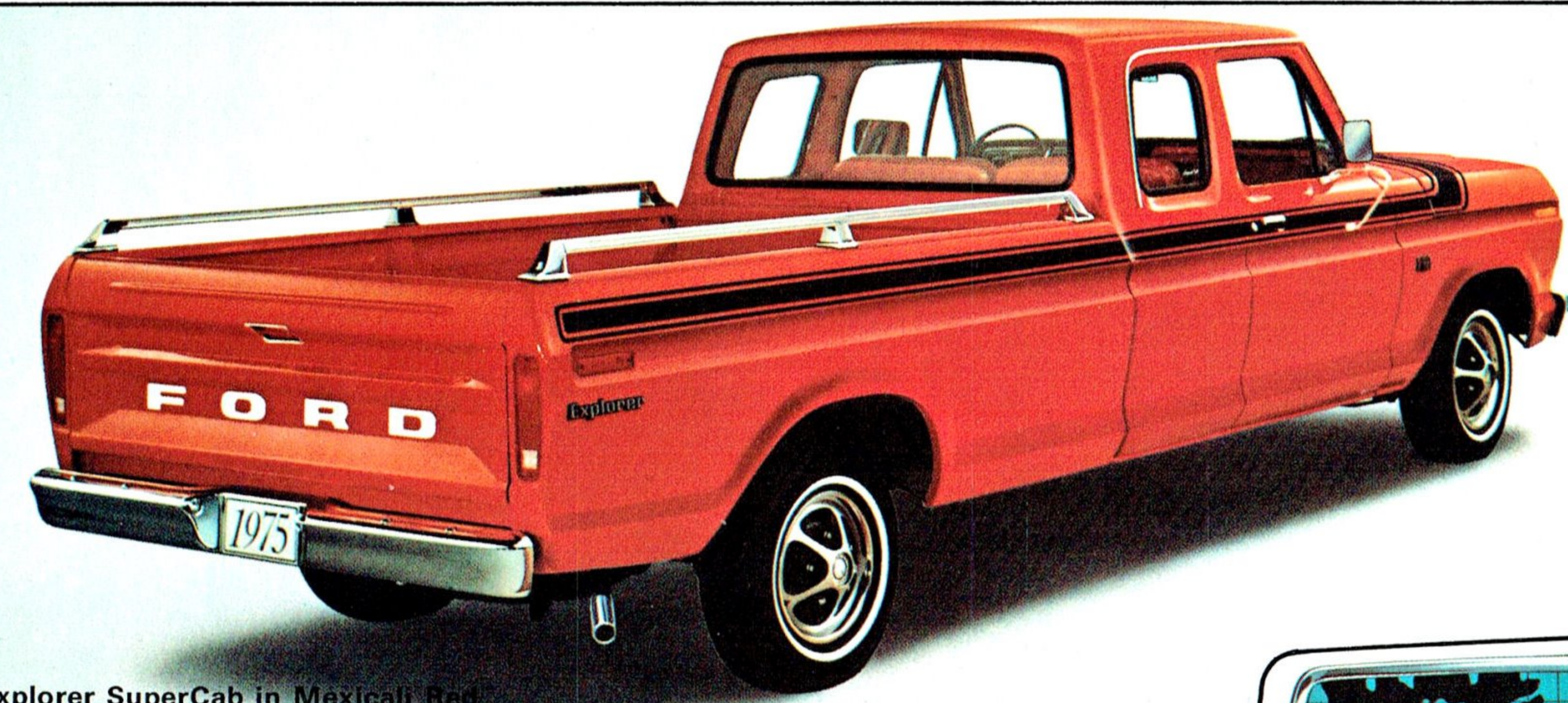
**F-100, 150,
250, 350**

*Based on manufacturer's suggested retail prices for options purchased separately compared with the package price for the same options.



Explorer Regular Cab in Hot Ginger Metallic

Select From Three Exclusive Explorer Packages



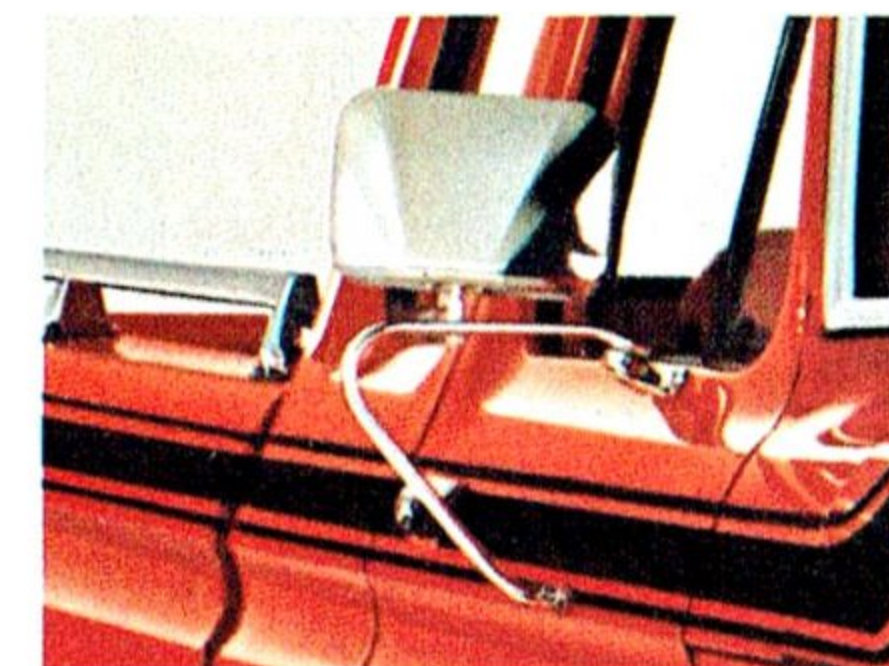
Explorer SuperCab in Mexicali Red



EXPLORER "A"

- Special Mexicali Red, Coronado Gold or Hot Ginger* Metallic Paint
- Special Seat Trim in Kirsten Body Cloth with Corinthian Grain Vinyl Bolsters
- Color-Keyed Floor Mats, Door Trim Panels and Arm Rests
- Bright Front Bumper Guards
- Front Bumper Rub Strips
- Bright Box Rails (8' boxes only. Rope tie down on 6 1/2' boxes)
- Unique Bodyside Tape Stripe
- Bright Windshield Moldings
- Bright Drip Moldings
- Explorer Nameplates
- Bright Low—Mount Swing-Lok Mirrors (not available with Camper Special)
- Bright Long—Arm Western Mirrors (with Camper Special)
- Mag-type Wheel Covers with Black Inserts (F-100/150)
- 16.5" Wheel Covers (F-250/350)
- 16" Wheels (Bright Hub Caps)
- Bright Exhaust Pipe Extension (not available with reduced sound level package)

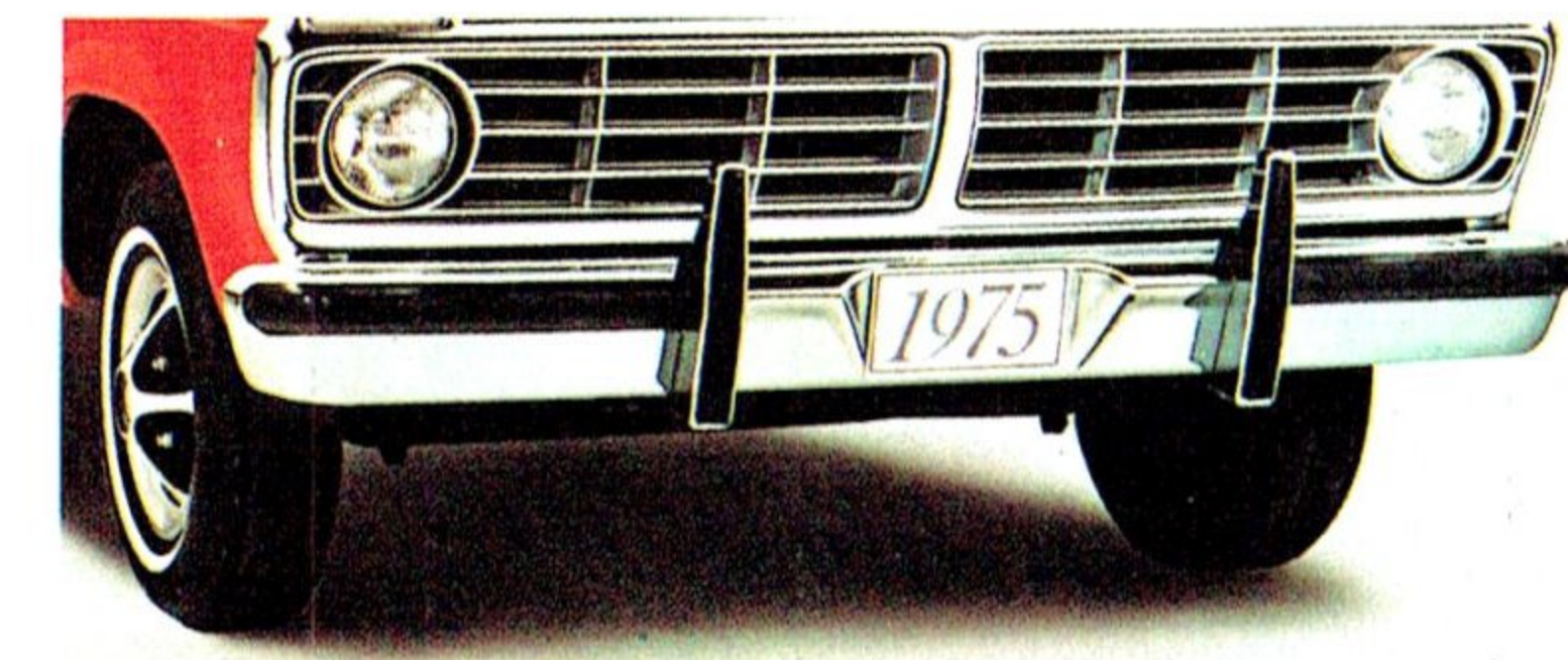
Special Explorer Features



LOW-MOUNT MIRRORS provide excellent rearward vision without obstructing the driver's line of sight to the side and front.



MAG TYPE WHEEL COVERS are action styled to enhance Explorer's rugged design.



FRONT BUMPER GUARDS WITH RUB STRIPS add attractive styling and help prevent bumper override and damage during minor frontal impact. The rubber inserts provide scratch-resistant protection.

- Explorer Hood Ornament
- Color-keyed Headliner and Sun Visors
- Color-keyed Crash Pad and Seat Belts

SUPERCAB ONLY

- Color-keyed Optional Super Cab Flip Seats, or Optional Forward Facing Rear Seat with Kiwi Vinyl Shoulder Bolster

EXPLORER "B"

- Includes all of the features of Explorer "A" plus . . .
- Power Steering
- SelectShift Cruise-O-Matic Transmission

EXPLORER "C"

- Includes all the features of Explorers "A" and "B" plus . . .
- Air Conditioning (Tinted glass is standard on all F-Series Pickups)

*Not available on SuperCabs

Explorer Special Interior Trims

EXTERIOR SPECIAL COLORS



Mexicali Red

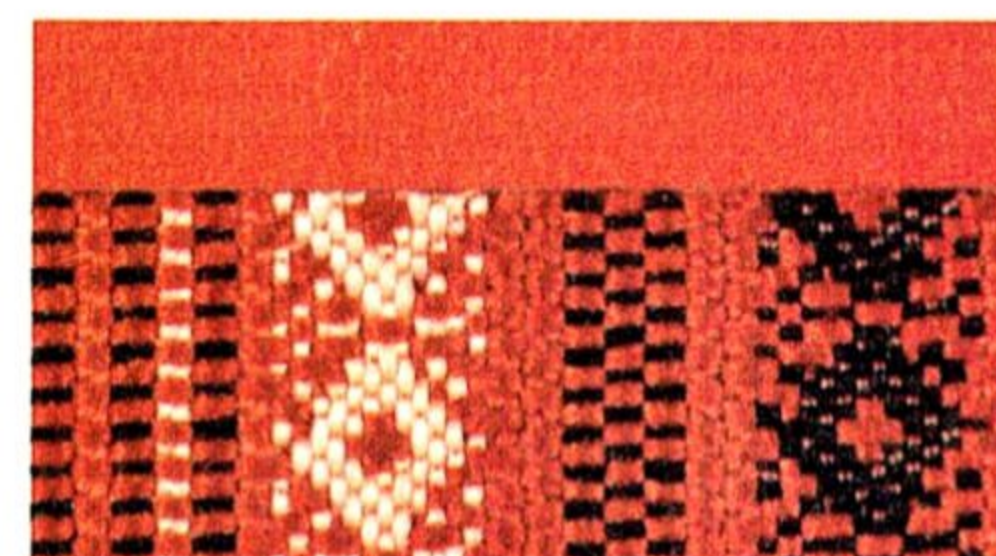


Coronado Gold

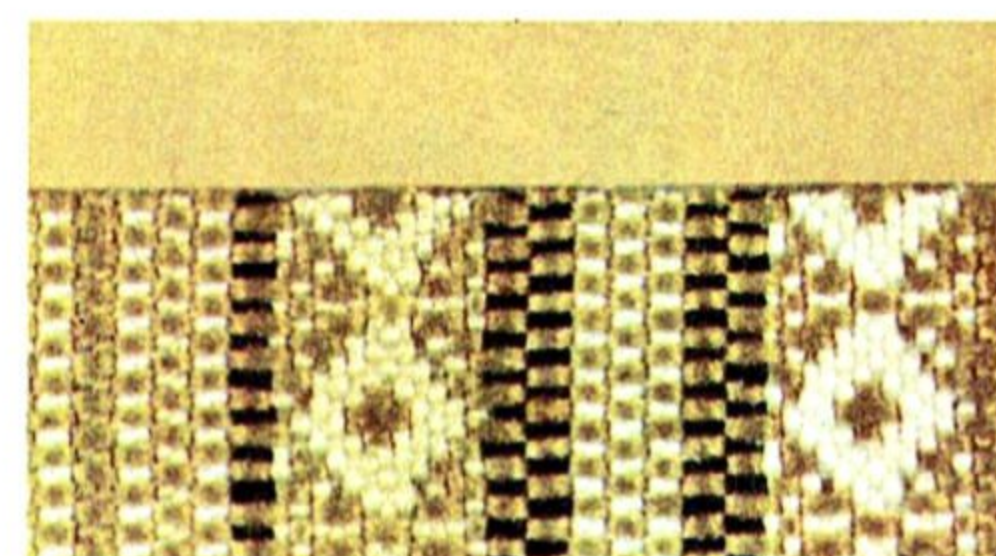


Hot Ginger Metallic
(not available on SuperCabs)

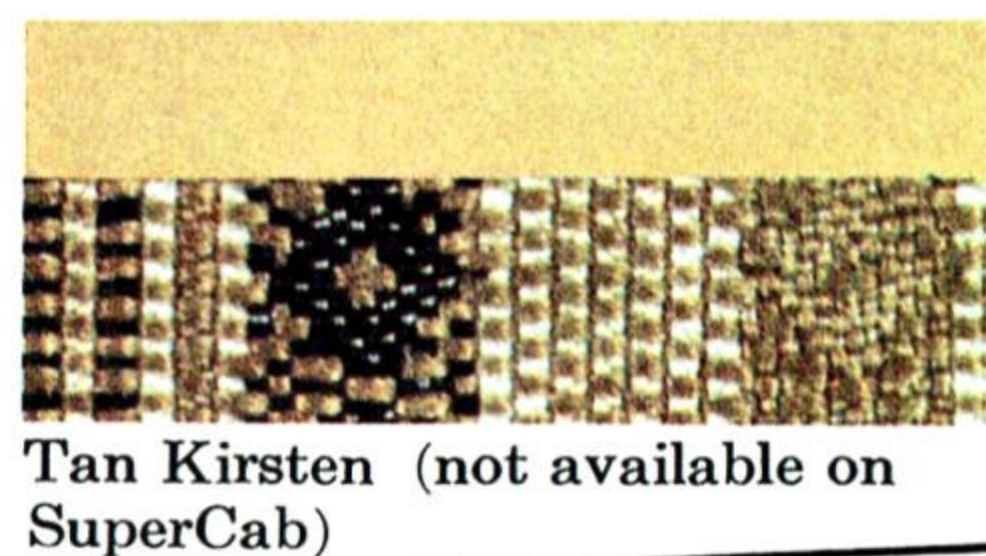
BOLSTER AND INTERIOR TRIM



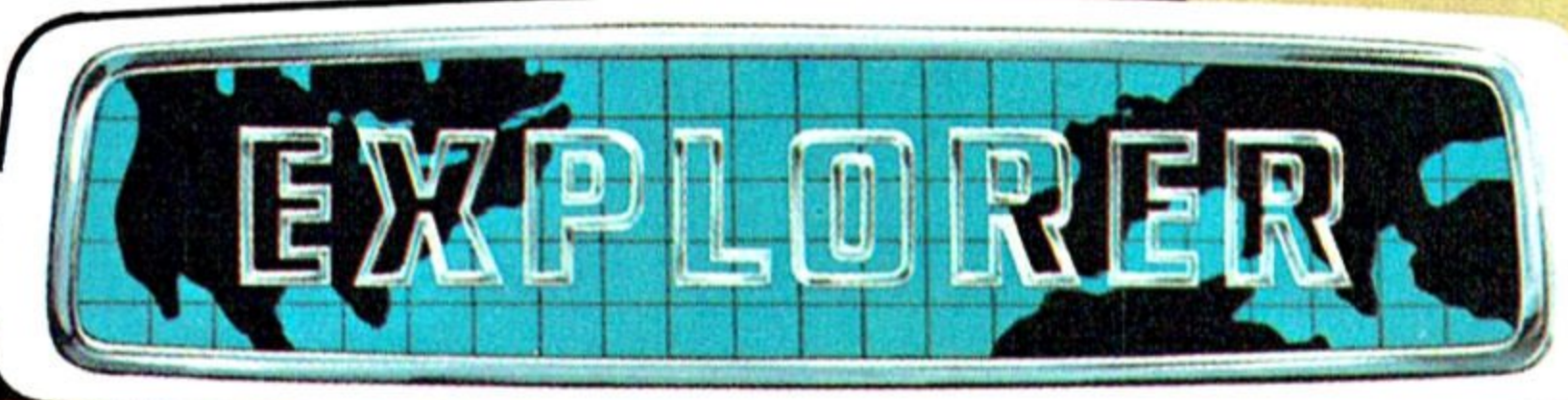
Coral Red Kirsten



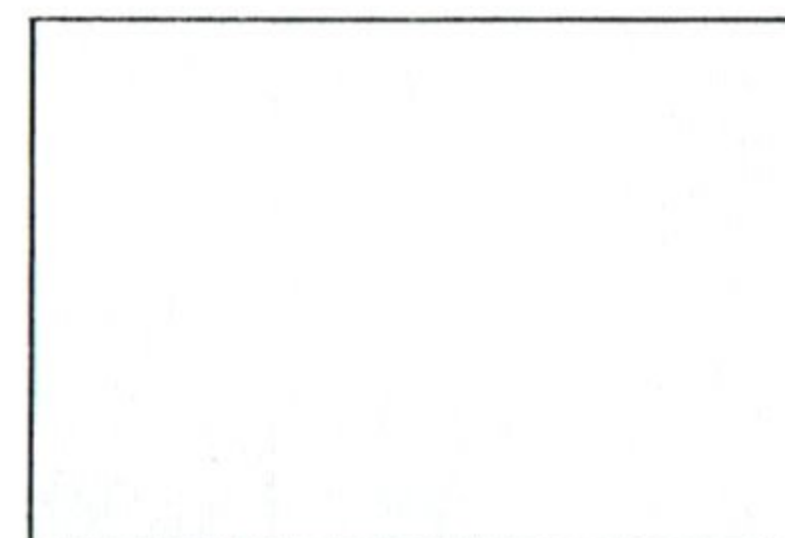
Gold Kirsten



Tan Kirsten (not available on SuperCab)



ADDITIONAL COLORS



Wimbledon White



Sequoia Brown Metallic



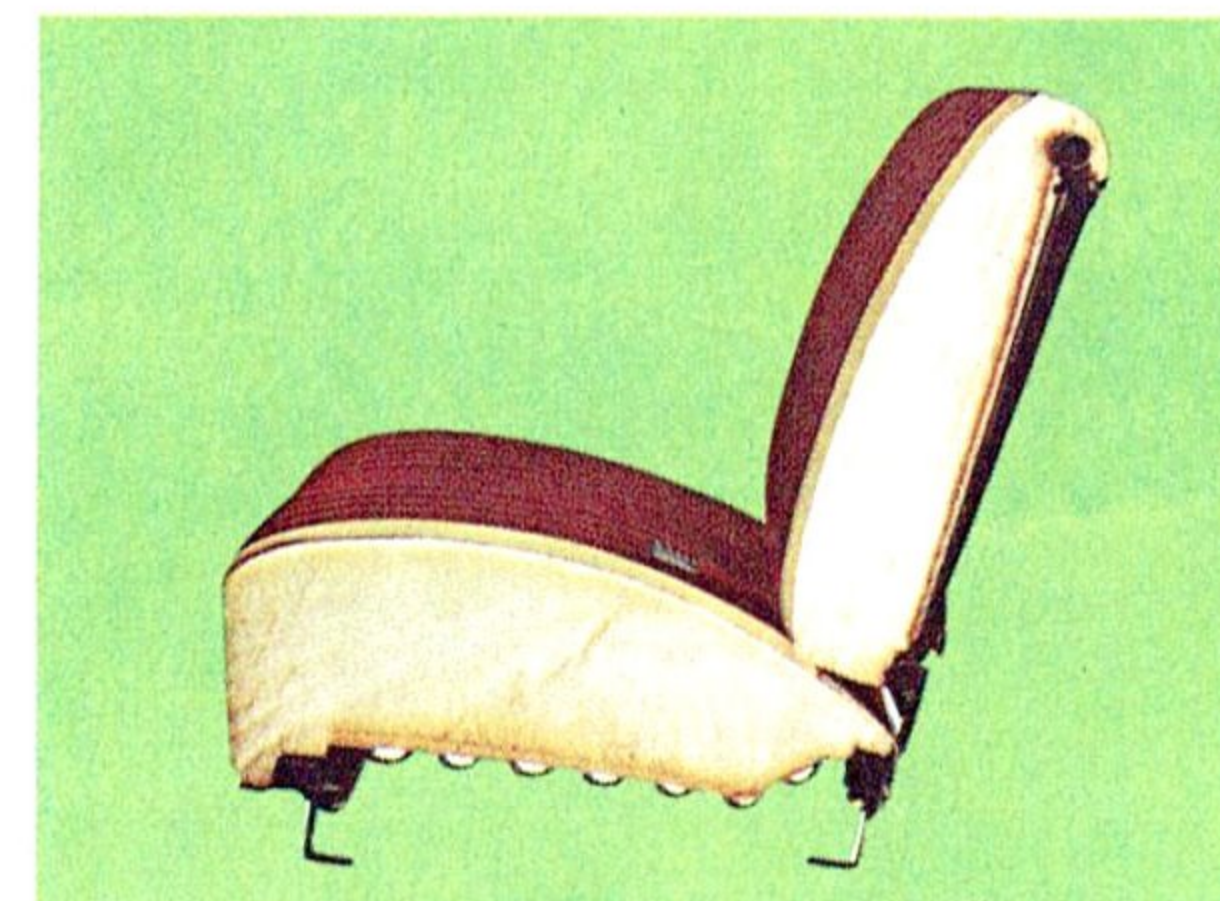
Ginger Glow



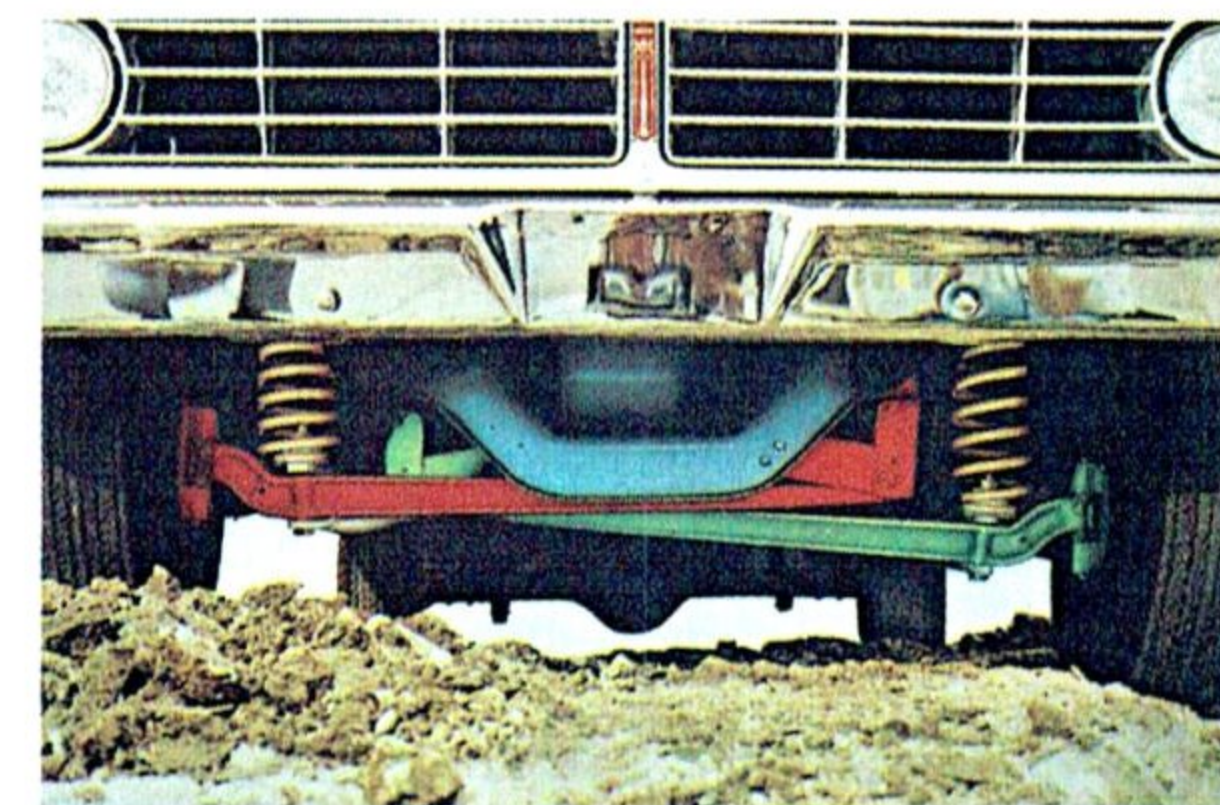
Raven Black

Regular & SuperCab Pickup

Standard Features



TWIN-I-BEAM FRONT SUSPENSION features two forged I-beam axles and big computer selected coil springs to step over bumps independently.



GALVANIZED METAL PROTECTION (over 200 sq. ft.) is used throughout Styleside pickups to battle rust and corrosion. Four-coat paint process includes two coats of enamel for a hard gloss finish.



DOUBLE SIDE-WALL CONSTRUCTION strengthens Ford's Styleside body. One-piece design helps reduce the number or rust prone joints. The bed's curved wall-to-floor shape makes it easy to clean.

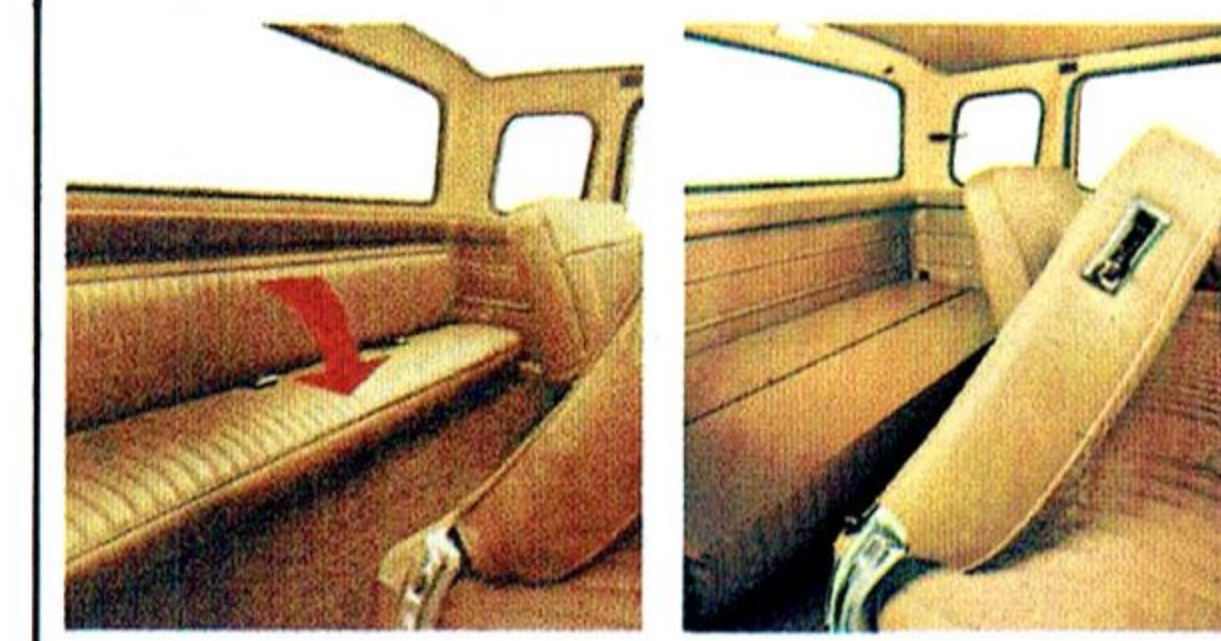
GVW/FUEL USAGE CHART

SERIES	GVW RANGE	FUEL USAGE
F-100	4650 to 5700 lb.	Unleaded
F-150	6050 lb.	Unleaded or leaded
F-250	6200 to 8100 lb.	Unleaded or leaded
F-350	6600 to 10,000 lb.	Unleaded or leaded

Optional Features



AUXILIARY JUMP SEATS OR A FORWARD FACING REAR SEAT make SuperCab super versatile. The auxiliary jump seats have foam cushions and backs that fold up for cargo. And with the forward facing rear seat you can carry six passengers in comfort, or fold down and place cargo on a tough, steel floor.



PICKUP BOX COVER for 8-ft. Stylesides is constructed of strong, lightweight fiberglass. It is equipped with tinted side and rear windows, roof vent and T-handle liftgate latch with lock. Deluxe models (shown here) have sliding side windows with screens,

dome light, bright side and rear window moldings and color-keyed Tu-Tone paints.



SLIDING REAR CAB WINDOW provides extra ventilation, either a little or a lot, for cab comfort. Also provides convenient pass through for campers.



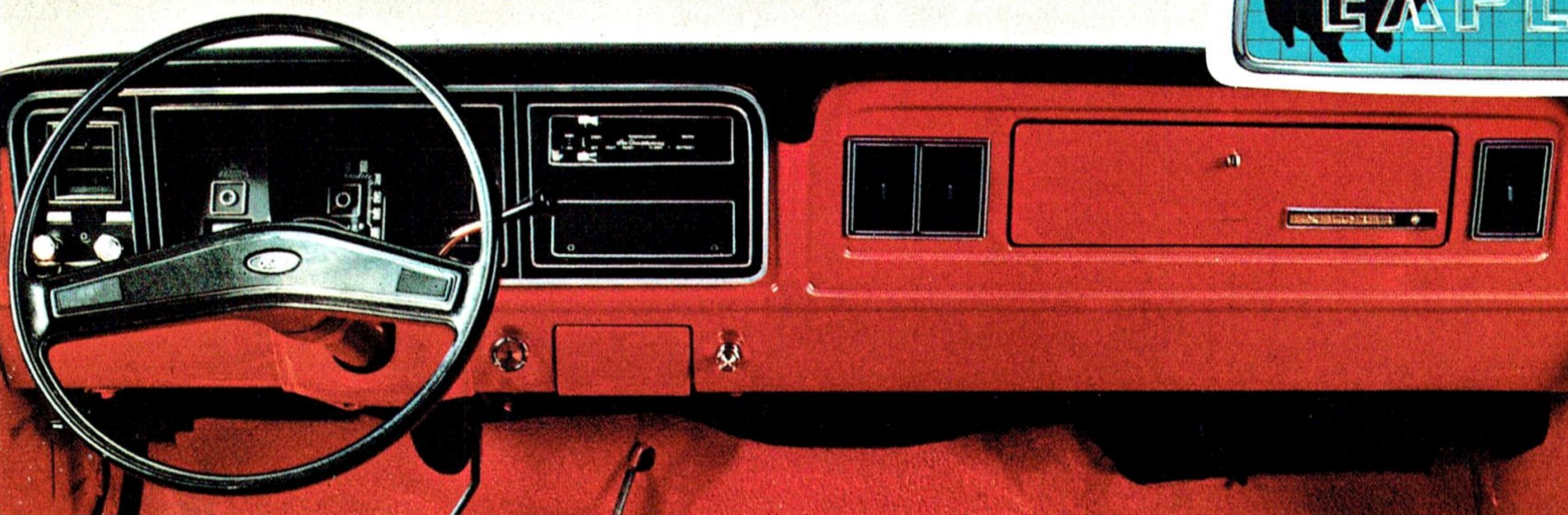
OPTIONAL ENGINE AVAILABILITY

Engines	Application*			
	F-100	F-150	F-250	F-350
300 C.I.D. Six	Std.	Std.	Std.	Std.**
302 C.I.D. V8	Opt.***	N.A.	N.A.	N.A.
360 C.I.D. V8	Opt.	Opt.	Opt.	Opt.
390 C.I.D. 2V-V8	Opt.	N.A.	N.A.	N.A.
390 C.I.D. 4V-V8	N.A.	Opt.	Opt.	Opt.
460 V8	N.A.	Opt.	Opt.	Opt.

*For conventional and SuperCab 4 x 2's in all states except Calif.

**360 V8 Standard with SuperCab and 140" WB Stylesides.

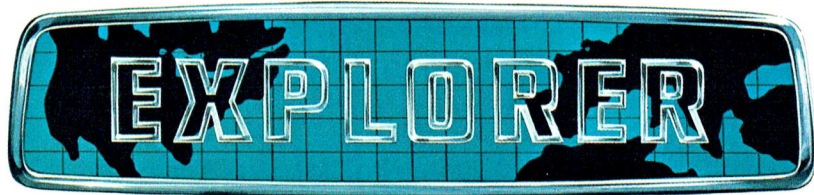
***Not available with SuperCab.



The Explorer instrument panel pad is color-keyed for an eye-pleasing appearance. Power steering and SelectShift Cruise-O-Matic Transmission are featured with Explorer "B". Explorer "C" adds Selectaire Air Conditioning. The air conditioner features four integral outlets in the instrument panel, full-selection lighted controls, and a quiet four-speed fan.

Works Like a Truck, Rides Like a Car

**We have them now...
but not for long!**



**Limited Time
Sale**

**The closer you look
the better we look**

Specifications, prices, descriptions and illustrative material contained herein were as accurate as known at the time this publication was approved for printing. Ford Division reserves the right to discontinue models or options at any time or change specifications, equipment or design without notice or without incurring obligation.

PLACE
STAMP
HERE