



1978 Dodge  
*Monaco*



**DODGE MONACO TWO-DOOR.**  
A perfect fit for an exciting life style.



The smartly finished Monaco two-door with SS option.



This new low back bucket seat design features all-vinyl trim and is shown with optional center console.

The contemporary Monaco Brougham two-door.

Consider the two-door Dodge Monaco and the Dodge Monaco Brougham. Impressively sized and styled. With handsome interiors designed for the active life. Powered to accommodate the travel-minded motorist, too.

For 1978, the Monaco is equipped with the highly regarded 225 Super Six engine matched to a durable three-speed, column-mounted manual transmission. Power brakes are standard equipment on all models.

Inside, you'll notice, both Monaco two-doors score high marks for both colorful and luxurious design. Monaco's standard front bench seat is a Regency cloth-and-vinyl in a wide choice of colors. Matching trim panels and carpets enrich the scene. On the Monaco Brougham, standard luxury is served by a rich cloth-and-vinyl split-bench seat with fold-down armrest. On Monaco models, you may choose a new optional all-vinyl split-back bench seat with fold-down armrest. All seats with center armrest feature a new thin-back construction for improved rear-seat legroom. All colors are again tastefully coordinated with deep color-keyed carpeting and smart-looking door trim panels.

Drive a Monaco. Discover how comfortably it fulfills your own active way of living.

Some items pictured on vehicles on this and other pages of this catalog are extra-cost options.





## DODGE MONACO FOUR-DOOR SEDAN. Wherever you travel, the luxury comes along.

The four-door sedans can accommodate plenty of travel gear.



The Monaco instrument panel offers prime evidence of its modern design.



Luxurious cloth-and-vinyl bench seat with center armrest is standard on the Brougham.

The family-size Monaco Brougham four-door sedan.

Monaco represents the solid choice of people who enjoy family-size motoring.

All Monaco four-door sedans are built on Dodge's longest wheelbase (117.4 inches), the same as the Monaco wagon. A standard 225 Super Six and a choice of V8 engines with two- or four-barrel carburetion are the prime sources of power. An efficient three-speed manual transmission is standard while TorqueFlite automatic is available for the Super Six and the optional V8 engines.

Handling is remarkably nimble, thanks to a beautifully balanced suspension incorporating torsion bars at the front. Interiors are notable for both decor and function. Slide behind the wheel and you discover Monaco's well-planned instrument panel. A touch of the seat tells you immediately of the stylish comfort you can expect. In Monaco, a full bench seat trimmed in rich Regency cloth-and-vinyl is standard. A split-back bench cloth-and-vinyl seat design with fold-down center armrest comes with the Brougham. Choose the optional 60/40 split-bench seat for your Brougham with a passenger seat recliner for long trip comfort. The Monaco sedans: remarkably roadable, rewardingly comfortable.



## MONACO WAGON.

The elegant workhorse.

If it's versatility you value most, take a look at the value received in the Dodge Monaco or Monaco Crestwood wagons.

Take a look at what you get standard on both wagons. There's a 360 V8 engine with Electronic Lean Burn System except in high altitude areas and California. There's TorqueFlite automatic transmission. Power steering and brakes. Heavy-duty front and rear suspension. Big, durable H78x15 glass-belted blackwall tires.

You'll like the carrying capability, too. With the seats folded, there is 85.5 cubic feet of useful cargo area. On two-seat models, there is an additional 5.2 cubic feet of concealed storage space under the hinged cargo floor.

Seats and upholsteries are skillfully tailored to the wagon owner's needs. An all-vinyl trim covers the Monaco's standard split-back bench, center armrest seat. Carpeting covers the entire floor, even the cargo area. The Monaco Crestwood reflects even more elegance with a remarkable "super soft" vinyl split-back bench seat. Or Crestwood buyers can order the luxurious 60/40 all-vinyl split-bench option with center armrest and passenger recliner.

You'll appreciate how luxuriously you can get the job done with Dodge Monaco wagons. Just about any job.

1. The Crestwood wagon reflects quiet, spacious elegance.

2, 3. Opening sideways or up and down, the doorgate on the wagon brings welcome convenience to the loading area.

4. The Monaco wagon is a full, family-oriented value.

5. This is the optional split-bench all-vinyl 60/40 seat with fold-down center armrest. A passenger-side recliner adds comfort.



## MONACO OPTIONS.

Choose them by the item—or by the package—as you please.

### THE PACKAGES:

**Basic Group (all models)** includes: TorqueFlite automatic transmission (standard wagons) • Power steering (standard wagons) • AM radio • Left remote-control mirror • Undercoating with hood silencer pad • Deluxe wheel covers • Standard size white sidewall tires • Dual horns (Monaco models only) • Deluxe windshield wiper with intermittent wipe.

**Light Package (all models)** includes: Fender-mounted turn signal indicators • Map and courtesy light • Ash receiver light • Ignition switch light with time delay • Glove box light • Trunk or cargo light (standard three-seat wagons) • Headlights "ON" warning buzzer • Rear door courtesy light switches (four-door models).

**Roadability Package** for Monaco and Monaco Brougham two-door hardtops and four-door sedans. Not available with Heavy-Duty Trailer-Assist Package. Includes: Rear Antisway bar\* • Extra-wide wheel rims\* • Heavy-duty shock absorbers • Eight-cylinder engine and radial tires required.

\*Available in Package only.

**Monaco SS Package** (Monaco hardtops only) includes: Vinyl bucket seats (center cushion with fold-down center armrest) • Tricolor body side striping. (Note: Console not available.)

**Deluxe Insulation Package** (six-cylinder models only) includes: Special body sound insulation. Available in Package only.

**Heavy-Duty Trailer-Assist Package** includes: HD 65-amp alternator • Performance 3.2 rear axle ratio • Heavy-duty suspension (standard wagons) with heavy-duty rear springs, heavy-duty shock absorbers • Auxiliary transmission oil cooler • Seven-wire harness with jumper • High-capacity cooling system • Extra-wide wheel rims • Variable load turn signal flasher • Power steering oil cooler • 500-amp Long-Life battery.

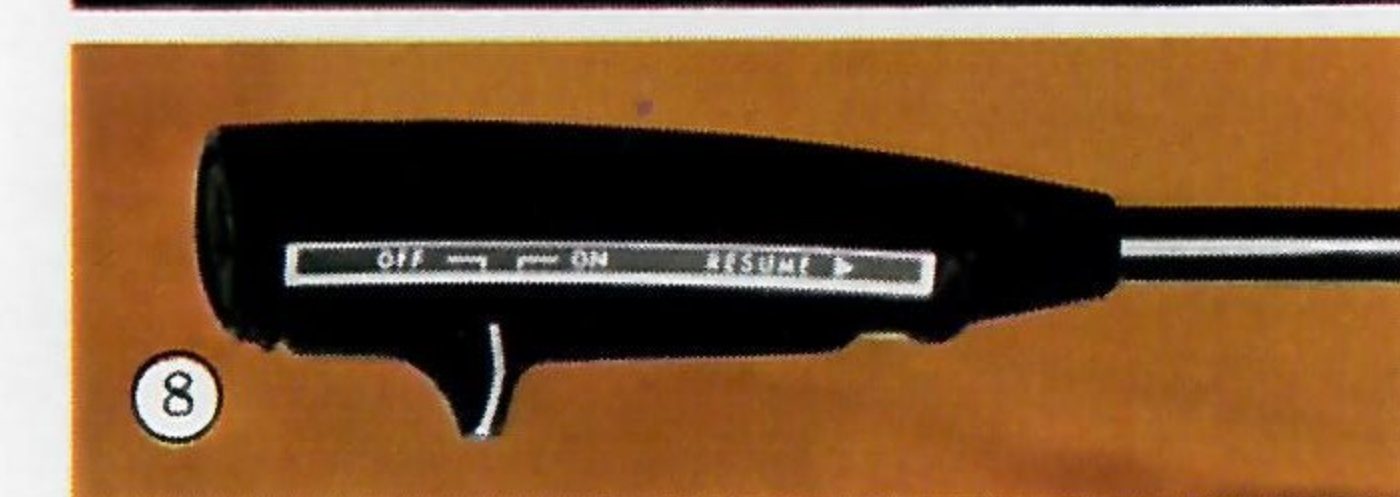
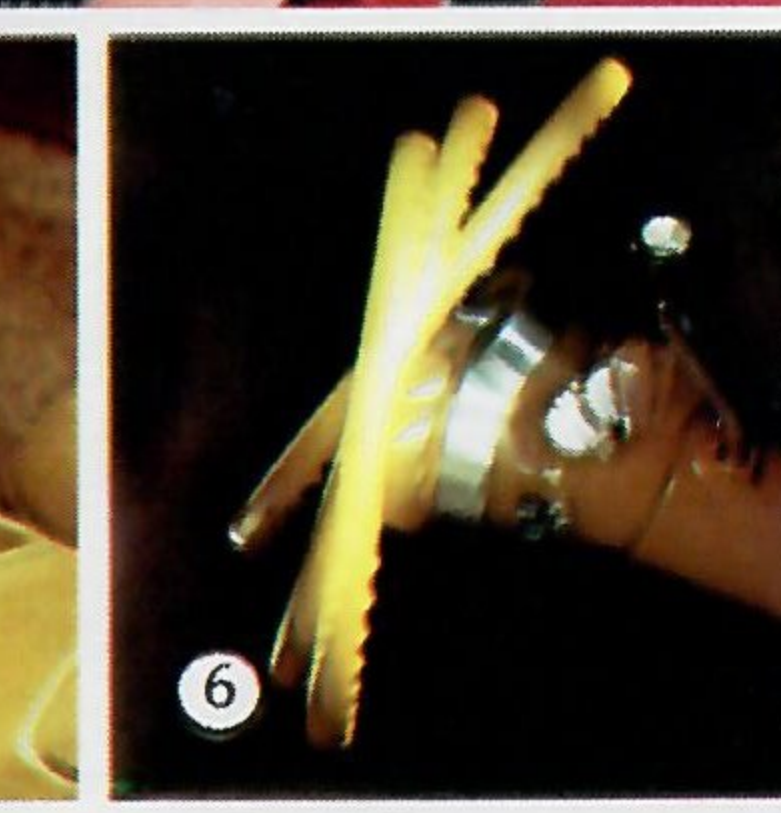
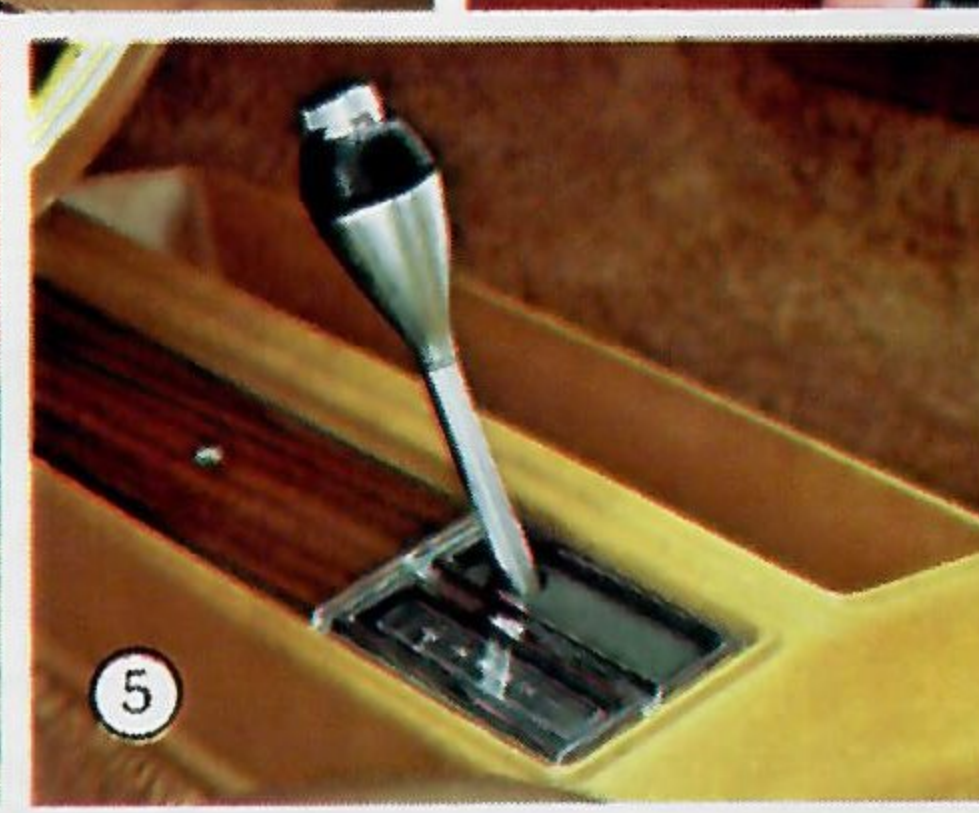
### INDIVIDUAL ITEMS:

Air conditioning (power steering and TorqueFlite automatic transmission required with 225 Six) • Sure Grip axle • 500-amp Long Life battery • Electric clock • Console (hardtops only—bucket seats and TorqueFlite required) • Electric rear window defroster • Door-edge protectors • Color-keyed front and rear floor mats • Locking gas cap • Tinted glass • Inside hood release • Dual horns (standard Brougham models, Crestwood wagons) • Left remote-control outside mirror • Dual remote-control outside mirrors • Power steering (standard on wagons) • Power windows, doors • Power door locks • Power bucket or 60/40 split-back seat (driver's only, Brougham models or Crestwood wagons) • AM radio • AM/FM radio • AM/FM stereo radio • AM, or AM/FM stereo radio and eight-track tape • AM, or AM/FM stereo, with CB transceiver and power tri-band antenna • Rear speaker, single (AM or AM/FM radio only) • Space Saving spare tire (N/A wagons—no charge with optional radial tires only) • Automatic speed control (N/A with 225 Six, TorqueFlite required) • Luggage rack (wagons only) • Automatic doorgate lock (wagons only) • Air deflector (wagons only) • Power doorgate window (wagons only) • Tilt steering wheel (TorqueFlite required) • Luxury steering wheel • Heavy-duty shock absorbers (standard on wagons) • Heavy-duty suspension (standard on wagons) • Full vinyl roof (four-door models) • Halo vinyl roof (two-doors only) • Canopy vinyl roof (two-doors only) • Canopy vinyl with opera window (two-doors only) • Undercoating • Deluxe wheel covers • Wire wheel covers • Aluminum fascia road wheels • Deluxe windshield wiper with intermittent wipe.

### THE EXTERIOR COLORS:

Black • Pewter Gray Metallic • Starlight Blue Sunfire Metallic\* • Cadet Blue Metallic • Wedgewood Blue • Mint Green Metallic • Augusta Green Sunfire Metallic • Spanish Gold Metallic • Jasmine Yellow • Golden Fawn • Bright Canyon Red • Tapestry Red Sunfire Metallic • Eggshell White.

\*Not available on wagons.



1. Trailer-assist equipment is described at left.  
2. Electric rear window defroster is a boon to all in damp or snowy conditions.  
3. 40-channel CB transceiver unit with AM or AM/FM stereo radio is new for 1978. Comes with power tri-band antenna.

4. Smart new aluminum fascia road wheels brighten the scene.  
5. Center console lends a sporty look to the hardtop's floor-mounted TorqueFlite transmission location.

6. Tilt wheel adjusts to seven convenient positions.  
7. Air conditioning control panel permits easy selection of interior temperatures.  
8. Automatic speed control holds exact speed you have selected.  
9. Smart Checkmate optional interior is sure to find favor with Brougham hardtop buyer.

Be sure to consult your Dodge Dealer for full details about Monaco's many individual options.

4488 \*



Monaco Brougham 2-door hardtop.



Monaco Brougham 4-door sedan.



Monaco Crestwood 4-door wagon.



Monaco 2-door hardtop.



Monaco 4-door sedan.



Monaco 4-door wagon.

### ENGINE SPECIFICATIONS\*

DESIGNATION	225 6-Cylinder Engine	318 V8 Engine	360 V8 Engine	400 V8 Engine
TYPE	Overhead Valve, Slant Six	Overhead Valve, 90° V8	Overhead Valve, 90° V8	Overhead Valve, 90° V8
CARBURETOR	2-Barrel (Not Available California or High Altitude Areas)	2-Barrel, 4-Barrel (California)	2-Barrel, 4-Barrel (California or High Altitude Areas)	4-Barrel (Not Available California or High Altitude Areas)
BORE & STROKE (Inches)	3.40 x 4.125	3.91 x 3.31	4.00 x 3.58	4.34 x 3.38
CUBIC-INCH DISPLACEMENT	225	318	360	400
COMPRESSION RATIO	8.4:1	8.5:1	8.4:1	8.2:1
RECOMMENDED FUEL	Unleaded Regular	Unleaded Regular	Unleaded Regular	Unleaded Regular

### DIMENSIONS

EXTERIOR (Inches)	2-Door Hardtop	4-Door Sedan	Wagon
Length*	213.2	218.0	225.1
Width	77.7	77.7	78.8
Height	52.9	54.3	56.9
Wheelbase	114.9	117.4	117.5
Track—Front	61.9	61.9	61.9
Track—Rear	62.0	62.0	63.4
INTERIOR (Inches)			
Headroom—Front	37.7	38.7	39.6
Legroom—Front	42.6	42.6	42.6
Headroom—Rear	36.6	37.3	39.7
Legroom—Rear	32.1	34.9	34.4
THIRD SEAT—WAGON ONLY			
Headroom			35.1
Legroom			30.1
LUGGAGE COMPARTMENT (Cubic feet)	14.7**	19.7**	85.5†
FUEL TANK CAPACITY (Gallons)	20.5	20.5	20.0
(25.5 gallon capacity with optional V8 engines, except wagons.)			

\*Includes bumper guards. \*\*With Space Saving spare tire (16.3 cu. ft. on hardtops; 20.7 cu. ft. on sedans.) †5.2 cubic feet additional cargo capacity in Monaco two-seat wagon.

### TRANSMISSIONS

TYPE . . . three-speed manual transmission with column-mounted shift selector. Fully synchronized in all forward gears for smooth up shifting and down shifting. Three forward, one reverse gear.

TYPE . . . three-speed TorqueFlite automatic transmission is improved for 1978 with a new lockup torque converter for increased fuel economy, lower transmission operating temperatures, and reduced engine speed during highway operations. (Lockup torque converter standard only with optional automatic transmission with 318, 360 two-barrel and 400-cubic-inch normal duty engines and all Monaco California engines except heavy-duty 360 V8. Not available in high altitude areas.)

### SUSPENSION AND BRAKE SYSTEM

FRONT—Torsion-bar system and a front antisway bar.

REAR—Multileaf springs at each wheel (four leaves on two- and four-door models; six on wagons).

FRONT—Power disc.

REAR—Power drum.

### ELECTRICAL SYSTEM

Alternator: 60-amp.

Battery: 375-amp (440-amp on 360 V8 and 400 V8 engines. 325-amp on 318 V8).

Electronic Ignition System: Standard on all engines. Electronic Lean Burn System on most eight-cylinder engines. Electronic voltage regulator.

### SAFETY EQUIPMENT

• Lap and shoulder Unibelt restraint system for driver and right front passenger. The total belt system includes: Seat belt reminder signal, shoulder belt tension reliever with door actuated tension release, automatic webbing retraction, lap belts for all other

occupants • Turn signals with lane change feature • Side marker lights and reflectors • Backup lights • Dual braking system with warning light • Dual throttle return springs • Electric multispeed windshield wipers and electric windshield washers • Energy-absorbing steering column • High penetration resistant windshield • Padded instrument panel and sun visors • Double ball joint mounted rearview mirror with soft rim • Side door guard beams • Resilient window crank knobs • Flush design inside door handles • Folding seatback latches • Interlocking door latches • Dual hood latch system • Front seat head restraints • Fire retardant interior trim materials • Recessed lift-type exterior door handles • Safety-Rim wheels • Visual check system for radiator coolant level.

### MAJOR STANDARD EQUIPMENT

Alternator, 60-amp • Ash receiver, front and rear • Battery, 375-amp (440-amp wagons) • Power brakes, front disc/rear drum • Bumper guards, front and rear • Cigarette lighter • Directional signals • 225 CID Super Six cylinder (hardtops and sedans) • 360 CID V8 (wagons) • Three-speed manual column-mounted transmission (hardtops and sedans) • TorqueFlite automatic transmission (wagons) • Cargo-area, color-keyed carpeting (wagons) • Glove box lock • Hazard warning flashers • Heater/defroster • Instrument panel with simulated woodtone trim • Brake system warning lights • Backup lights • Dome light • Parking brake warning light • 12-inch day/night inside rearview mirror • Manual left outside chrome mirror • Power steering (wagons) • Two-way manual front seat adjustment • Unibelt passenger restraint system • Deluxe two-spoke steering wheel • Upper-level ventilation • Hubcaps • Heavy-duty suspension (wagons) • Body Insulation Package (wagons) • Doorgate-ajar warning light (wagons) • Oak-grain woodtone body side and doorgate treatment on Crestwood wagons.

All product illustrations and specifications are based on authorized information. Although all descriptions are believed correct at publication approval, accuracy cannot be guaranteed. Some of the equipment shown on product illustrations is optional at extra cost. Dodge reserves the right to make changes from time to time, without notice or obligation, in prices, specifications, colors and materials, and to change or discontinue models.

