

# *1998 Chevrolet Prizm*





*Prizm Sedan in Black Mist Metallic  
with optional alloy wheels.*

# The New Prizm. Relax. This Is One Great Car.



Introducing the 1998 Chevrolet Prizm.

It's the newest version of the affordable small sedan that's been voted a *Consumers Digest* Best Buy for the past five years in a row.\*

## Quality In Every Detail

From Prizm's sophisticated style to its enhanced roominess and comfort, you will see designed-in quality in every detail. You'll discover fit-and-finish that was once the exclusive province of expensive sedans. You'll enjoy a very quiet ride and confident road manners, thanks to a stiffer body structure and a retuned suspension. An all-new and amazingly smooth 1.8 Liter engine (with dual overhead camshafts) delivers more power with better fuel economy.†

## A New Level Of Safety

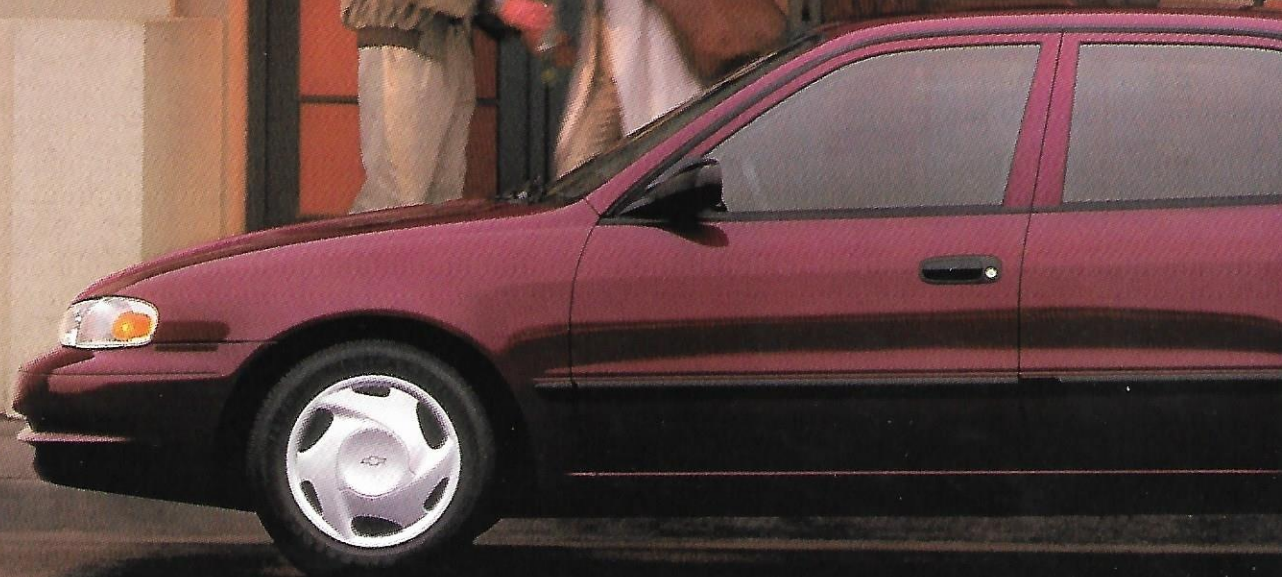
Prizm provides you with a comprehensive safety package, including steel safety-cage construction surrounding the entire passenger compartment, front and rear crush zones and Daytime Running Lamps. New driver and front-passenger *side* air bags and anti-lock brakes are optional.

## The New Prizm: Believe In It

The Prizm philosophy: A car should be reliable, affordable, and it should have the safety features you need. Relax, we'd never change that.

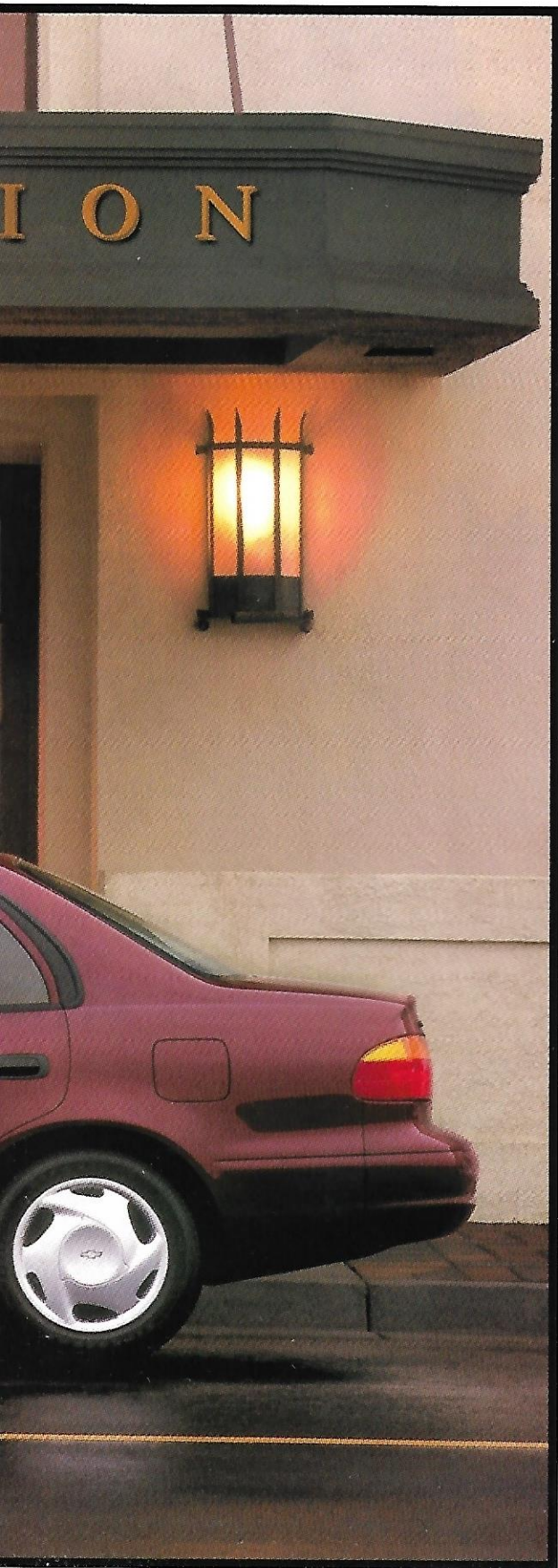
\*1993 through 1997 model years. †Compared to 1997 Prizm.

# CENTRAL STAT



*Prizm Sedan in Ruby Pearl Mica with optional wheel covers.*

# Prizm Sedan. Highly Recommended By Owners.



For five years now, we've been telling people that an amazing 97 percent of Prizm owners would recommend Prizm to a friend.\* That's a lot of people liking this car for a lot of reasons.

Year after year after year.

## Prizm — Editor's Choice

When it comes to Prizm, consumer magazines use words like "affordable," "best buy" and "recommended." And, that was last year!

## For '98, There's Lots To Love

The all-new Prizm Sedan you see here is actually our lowest priced model.

But, like every 1998 Prizm, it's better than ever before. And, it's loaded with the things you want, including precise rack-and-pinion power steering, a long-lasting stainless-steel exhaust system, dual remote mirrors and tinted glass.

When you take a close look at the new Prizm, you'll wonder how you ever got along without one.

*\*Based on owner surveys, 1993 through 1997 model years.*



## Secure, Easy Loading

For your convenience, Prizm has a cargo-area light and remote trunk release. Bumper-level loading height makes packing easy and cargo space is an impressive 12.1 cu. ft.



## Rear-Seat Cup Holder

Every Prizm now has three cup holders, two in the front and another one for rear-seat riders.



## 5-mph Bumpers

Standard 5-mph front and rear bumpers exceed federal barrier test requirements and feature resilient covers to resist minor dings and dents.



*Prizm Sedan interior in Dark Charcoal.  
Some optional equipment shown.*

# Inside Prizm ... The Look And Feel Of Quality.



You'll enjoy the look and feel of quality every time you get in your new Prizm. Every detail confirms your first impression: This is one great car.

## Relax, It's Quiet In Here

A quiet car is a quality car, and the 1998 Prizm is one great example. The fully independent suspension is tuned to provide a beautiful balance of ride and response. The high-strength, unitized body structure reduces the intrusion of outside noise. And, the restyled exterior sheet metal is shaped to reduce wind "rush" at highway speeds.

## Prizm Has Quality Standards

Wouldn't you like a dependable, well equipped car for an affordable price? The new Prizm Sedan meets that high expectation, with an impressive roster of features, including head restraints in the front *and* the back (outboard), dual visor mirrors with map straps, a headlamps-on warning tone and door-ajar warning lamps.

A great car should be quiet, refined and well equipped. The quality-built 1998 Prizm is exactly that.



## Delay-Off Lighting

Standard Delay-Off lighting keeps the interior lit for 15 seconds after doors close. It's another thoughtful security/convenience feature.



## A Very Versatile Console

The center console features dual cup holders, a storage bin that's perfect for tapes or CDs, a coin holder and a rear-seat cup holder.



**Scotchgard™ Protector, Standard**  
Spilled your ice cream? Relax. Scotchgard™ Protector is a standard feature that helps keep seat fabrics and door trim looking newer longer.



*Prizm LSi instrument panel.  
Some optional equipment shown.*



# Your Secure Driving Environment.

In the totally redesigned Prizm interior, you'll feel secure and in control. Nothing is out of reach. Everything is right here, where it should be. The new instrument panel sweeps around you with seamless style.

Every detail — from the easily accessible power door lock controls (optional) to the front safety belts with easy-to-use height adjusters — is so perfectly arranged you'll think you designed it yourself.

## Information At A Glance

Instrumentation is easy to use, easy to read and easy to reach. There's a precise feel to every control. Gauges are analog, and softly lit for easy nighttime visibility. A new dual-mode trip odometer lets you track mileage for two trips at the same time. There's even a low-fuel level lamp — another thoughtful detail that's standard equipment.

## You'll Enjoy The View

The large glass area and low hoodline provide an expansive view of the road. Yes, this is one great car.



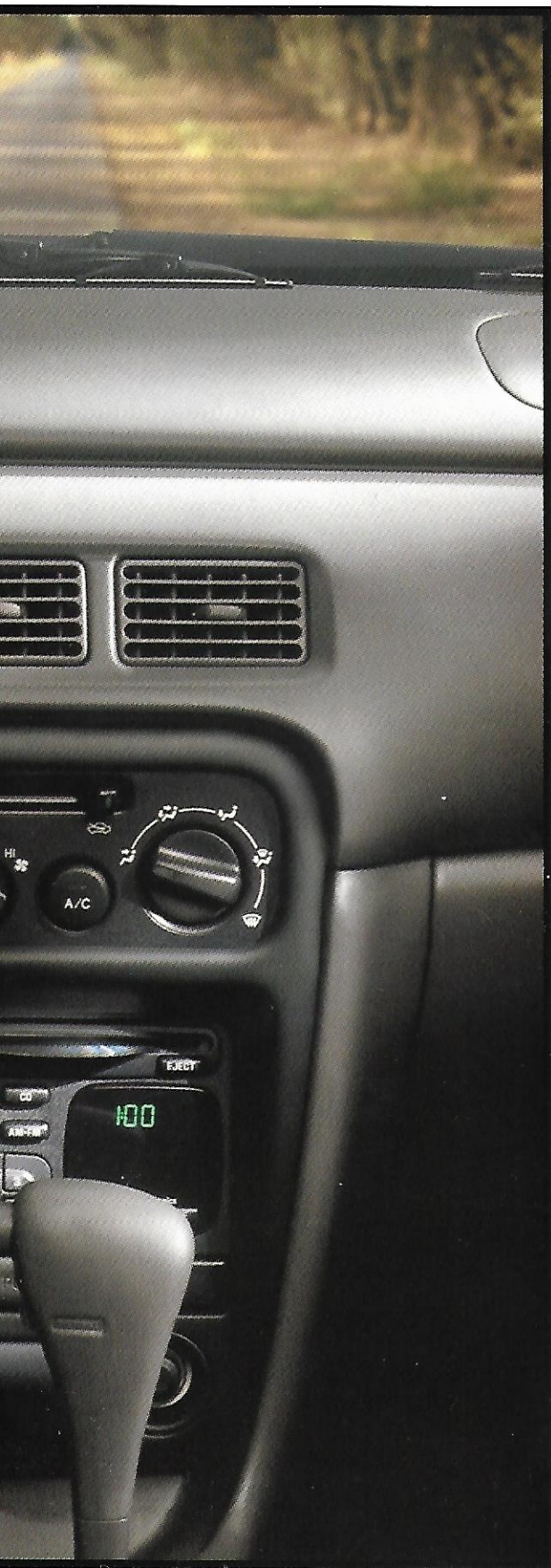
**Remote Adjusting Mirrors**  
Dual manual remote mirrors let you adjust exterior rearview mirrors without lowering a window. Power remote mirrors are standard on Prizm LSi models.



**Exterior Temperature Monitor**  
A new option for 1998. Now — wherever you happen to be — you'll know the temperature outside. That's good to know, especially when a drop in temperature could mean the difference between wet pavement and an icy road.



**Power Door Locks**  
Power door locks are a great convenience/security feature. Optional on Prizm Sedan and standard on the LSi.





*Prizm LSi Sedan in Midnight Emerald Mica  
with optional alloy wheels.*

# The LSi Sedan. Prizm At Its Very Best.



LSi Sedan is subtle, sophisticated and upscale. It is well appointed, well built and it just could be the most refined small sedan you've ever driven.

## An Exterior Of Distinction

The quiet good looks of Prizm LSi are enhanced by unique full wheel covers, black upper door-frame trim and LSi badging. Dual outside power mirrors are also standard.

## A Smooth, Poised Performer

Prizm, with a new 1.8 Liter, DOHC engine, provides smooth, responsive and predictable performance for everyday driving. You can add to that responsiveness with the newly optional LSi Handling Package. It adds a front stabilizer bar (a rear stabilizer is standard) and P185/65-R-14 radial tires. Your transmission choices include a standard 5-speed manual, optional 3-speed automatic or electronically controlled 4-speed automatic.

The upscale style — and substance — of Prizm LSi. Consider it your own little reward for buying the right car.



**Optional Electric Sunroof**  
*A factory-installed, electric sliding sunroof adds open-air ambience to the Prizm experience. The glass panel includes a tilt-up feature.*



**Optional Stereo With CD**  
*You can choose from three optional sound systems, including this electronically tuned AM/FM stereo with digital clock and CD player.*



**Remote Keyless Entry**  
*Remote Keyless Entry, standard on Prizm LSi, lets you lock or unlock doors and turn on interior lights from up to 30 feet away. You'll be able to get in and get going — quickly.*



*Prizm LSi interior in Light Neutral.  
Some optional equipment shown.*

# Inside LSi. Subtle, Sophisticated Style.



You'll like what you see inside Prizm LSi. This interior is wonderfully quiet and comfortable, and is loaded with quality appointments.

## The LSi Difference

First, you'll notice the exclusive-to-LSi Custom Cloth seat fabrics. Choose from two subtle color choices, Dark Charcoal or Light Neutral, depending on exterior color selected. Standard LSi equipment includes a split-folding rear seat with trunk pass-through, power door locks, Remote Keyless Entry and carpeted floor mats.

## Personalize Your Prizm

Things you can add to Prizm LSi include an AM/FM stereo with CD player, power windows, cruise control, and a tilt steering column. Optional safety equipment includes new *side* air bags for the driver and front passenger, and an integral rear child safety seat.

Take a good look inside Prizm LSi. We believe you'll be impressed.



**Integral Rear Child Safety Seat**  
*Prizm LSi offers the option of an integral child safety seat (one of the few cars in its class with this option).*



**Console With Storage**  
*Prizm LSi features a covered center console with storage for coins, CDs or cassettes. It's your personal organizer.*



**Front Seatback Nets**  
*These nets — standard in LSi — offer one more place to put things.*



**Split-Folding Rear Seat**  
*For added cargo-carrying flexibility, Prizm LSi includes a standard 60/40 split-folding rear seat with a trunk pass-through feature.*

## Safety

### *Impact-Absorbing Bumpers*

Rugged 5-mph front and rear bumpers and body-color fascias are designed to bounce back to their original shape after minor impacts.

### *Daytime Running Lamps With Automatic Exterior Lamp Control*

During daytime driving situations, reduced-intensity low-beam headlamps come on automatically to alert other roadway users to your oncoming vehicle. Headlamps and other exterior lamps automatically adjust to regular intensity at night and in other low-light situations.

### *Improved Headlamps*

Crystalline clear, multi-reflector headlamps improve visibility at night, enhancing safety.

### *Energy-Absorbing Interior*

A soft upper interior improves comfort and is designed to help reduce the risk of injury in a collision.

### *Shoulder Safety Belt Guide Loops*

Front safety belts have height-adjustment guides. The front safety belts also feature force limiters that are designed to absorb energy in a collision.

### *Rear-Seat Three-Point Safety Belts*

Rear-seat riders should like this: a shoulder safety belt for the person who rides in the middle. It's a new standard safety feature.

### *Integral Rear Child Safety Seat*

An easy-to-use, integral child safety seat is optional on Prizm LSi. Great for families.

### *Side Air Bags*

Optional side air bags for the driver and front passenger, located in the side of the front seat-backs, are new for 1998.

### *Optional Four-Wheel ABS*

The optional four-wheel anti-lock braking system reduces wheel lockup while braking, and is designed to help maintain steering control and help prevent skidding on most slippery surfaces.

## Technology

### *More Engine Insulation*

A new hood insulator pad, double-seal door weather-stripping and improved aerodynamics help reduce noise and vibration.

### *Improved Fuel Economy*

The all-aluminum engine head and block make the 1.8 liter engine lighter than last year's engine and contribute to improved fuel economy.

### *A More Powerful Engine*

The new 1.8 liter engine has more horsepower and torque than last year's engine. That makes passing and maneuvering easier than ever.

### *Additional Engine Enhancements*

Other engine enhancements include a new serpentine accessory drive belt and a direct ignition system that eliminates the need for periodic timing adjustments.



### *Improved Body Rigidity*

The stiff body structure contributes to a smooth ride and minimizes squeaks and rattles.

### *Better Acceleration*

The new engine helps the 1998 Prizm accelerate from 0 to 60 mph more than 1.3 seconds faster than last year's Prizm.

### *Front Stabilizer Bar*

The optional Prizm LSi Handling Package includes a front stabilizer bar and P185 tires to improve ride and response in a variety of road conditions.

### *New Odometer Display*

A new LCD odometer display adds precision and improves legibility of the numbers.

### *Standard Power Steering*

Power steering is standard on both Prizm and Prizm LSi models, which makes parallel parking just a little bit easier.

### *Coated Alloy Wheels*

Road salt and automatic car wash brushes can be hard on wheels. That's why the optional alloy wheels on Prizm LSi have a special protective coating.

## Convenience

### Dual Visor "Vanity" Mirrors

Here's another reason to look into a Prizm. Both front visors have "vanity" mirrors attached. The driver mirror is covered.

### Passenger Assist Grips

Three roof-mounted assist grips give your passengers something to hold onto.

### Scotchgard™ Protector

Scotchgard™ Protector, on all cloth seats and door trim, helps resist stains and makes cleanups easier.

### Outdoor Temperature Display

The optional tachometer features an outdoor temperature LCD display so you'll always know the temperature.



### The "Keep It Simple" Philosophy

A redesigned instrument panel features logically placed controls that are very easy to operate.

### Dual-Mode Trip Odometer

A dual-mode trip odometer is now standard, so you can keep track of up to two road trips.

### Roomier Glove Box

The glove box is bigger than it was last year. What more can we say?

### The Dipsticks Are Easy To Find

It's easy to check fluid levels, thanks to dipsticks and containers that are in easy view, and clearly labeled. A maintenance-free battery is standard.

### Driver-Side Storage

New: a driver-side compartment on the instrument panel. You get a new place to put things, and easy access to the fuse box.

### Center Console Convenience

The standard center console is based on the Swiss Army Knife idea. You get two cup holders, a storage tray, and a place to put your coins.

### Intermittent Windshield Wipers

To make driving easier in inclement weather conditions, variable intermittent windshield wipers are standard on all Prizm models.

### Delay-Off Lighting

Delay-Off lighting keeps interior lights on for 15 seconds after you close the door. A great standard convenience feature.

### Front Seatback Storage

Front seatback net pockets are now standard on Prizm LSi, giving you yet another place for storage.

### *Remote Keyless Entry*

Remote Keyless Entry and power door locks, standard on Prizm LSi, enhance security by helping you get in and get going ... quickly.

### *Backseat Cup Holder*

Backseat riders will appreciate the conveniently located rear cup holder.



### *Door Storage*

Rear and front-passenger in-door storage bins are available for sunglasses, maps and other small items.

### *Super-Level Loading*

Prizm, you get bumper-level loading, remote trunk release and a cargo-area light.

### *Security For Your Gas Cap*

Prizm and Prizm LSi include a standard fuel warning light as well as an interior-mounted remote fuel filler door release. A remote trunk release is also standard.

## Appearance

### *Refined Interior Fabrics*

All Prizm models feature standard, full cloth seating for a refined interior appearance.

### *Rear-Mounted Antenna*

The antenna is now mounted to the rear quarter panel. It improves reception, looks better than the roof-mounted antenna it replaces and reduces wind noise, too.

### *All-New Sheet Metal*

New exterior shape provides a contemporary appearance and excellent aerodynamics.

### *Full Wheel Covers*

Standard on LSi and optional on base models — and newly styled — full wheel covers add a lot of extra sophistication for a little extra money.

## Comfort

### *A Better Ride*

For 1998, Prizm has an improved ride that reduces noise, vibration and harshness.

### *A Built-In Umbrella*

Rainwater and other moisture is channeled away from window and door openings, so you'll stay dry when you get in and out.

### *Optional Electric Sunroof*

If you've ever had a car with one, you won't want a car without one. This factory-installed, power glass sunroof has a tilt-up feature and this option includes a map light.

### *Rear Outboard Head Restraints*

Head restraints for backseat riders (except center position) are standard for 1998.

### *Quick, Easy Seat Adjustments*

The Prizm front seat features a full-width seat adjuster bar that makes seat adjustments quick and easy.

### *De-Humidify and Defrost*

The AC compressor automatically operates during the defrost mode, helping de-humidify the air inside Prizm. In other words, windows will clear faster than before. Side-window defoggers are standard.

### *Improved Air Conditioning System*

For your comfort, the 1998 air conditioning system has improved airflow to the footwells.

### *Premium Sound Systems*

The 1998 Prizm offers three optional stereo sound systems, with a choice of cassette or CD players.

### *Four-Speaker Stereo Sound*

Optional sound systems include four speakers, including two premium coaxial speakers in the front doors.



# 50 Smart Ideas. One Great Car.

With a car like Prizm, it would have been easy enough to leave well enough alone. After all, Prizm was already a 1997 *Consumers Digest* "Best Buy." But, for 1998, we couldn't resist making a great car even better.

## Not Just Another Pretty Car

Lots of cars look nice in the showroom. Prizm is designed to look good — and designed to provide you with secure, dependable transportation — for years to come.

## 50 Reasons = One Great Car

On this gatefold, you'll see 50 reasons why Chevrolet Prizm is one great car. So, if you've got the time, carefully compare Prizm features with those of any other car in its price class. The closer you look, the more you'll like the logic of this new Prizm.



*Prizm LSi Sedan in Lavender Pearl Metallic.*

# Confident, Responsive Performance.



Every time you merge into traffic or pass a slow-moving vehicle, you'll be glad you're behind the wheel of such a smoothly responsive automobile.

## More Power = More Security

The new 1.8 Liter engine delivers 120 horsepower and 122 lb.-ft. of torque.

An all-aluminum engine structure contributes to an impressive power-to-weight ratio, and a refined 16-valve cylinder head lets the engine "breathe" better. That improves both performance and fuel efficiency.\*

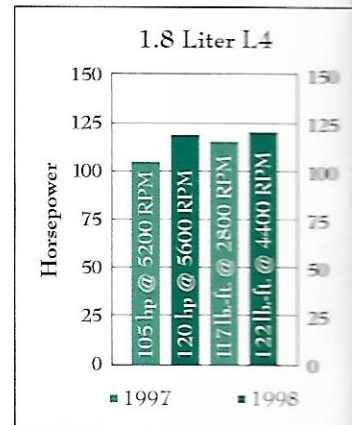
## A Choice Of Transmissions

A smooth-shifting 5-speed manual is standard. There are two options, a 3-speed automatic and an electronically controlled 4-speed automatic.

The new Prizm powertrain is designed to give you the confidence and security you need in a fast-moving world. Plus, it's always fun to have a little extra power.



**A More Powerful Engine**  
Compared to last year's engine, the new 1.8 Liter engine is lighter, more powerful and more efficient. Talk about having it all!



## Impressive Response

Thanks to an advanced 16-valve, dual-overhead camshaft (DOHC) engine design, you'll enjoy quick response at city speeds and smooth passing power on the highway.



## \*Impressive Fuel Efficiency

This engine doesn't sacrifice fuel efficiency for power. The EPA-estimated MPG is city 31/highway 37 with the standard 5-speed manual transmission.



# Safety Surrounds You In A Prizm.



*Prizm Sedan in Ruby Pearl Mica with optional wheel covers. Daytime Running Lamps with Automatic Exterior Lamp Control are a standard safety feature in every Prizm.*

A comprehensive list of standard and optional safety features. It's one of the best reasons to buy a 1998 Prizm.

## Occupant Protection Features

Standard in every Prizm: lap/shoulder safety belts for all seating positions, Next Generation driver and front-passenger air bags,\* front and rear head restraints (outboard seating positions), safety-cage construction, front and rear crush zones and side door beams. The front safety belts feature force limiters that are designed to absorb energy in a frontal collision. Optional: new front *side* air bags.

## Crash Avoidance Features

Standard: Daytime Running Lamps with Automatic Exterior Lamp Control, a brake/transmission shift interlock (on automatics), tire tread wear indicators and audible front brake wear indicators. Optional: four-wheel ABS.

### \*A Special Note To Parents

*Children are generally safer if they ride in a rear seat using the appropriate child safety seats and restraints, which is why General Motors recommends that child safety seats be properly secured in a vehicle's rear seat. See your owner's manual and child safety seat's instructions for information.*

*\*Always wear safety belts, even with air bags.*



### Safety Belt Comfort

*Easily adjustable front shoulder belt guide loops make belts more comfortable.*



### Rear Lap/Shoulder Belts

*All three rear seating positions include lap and shoulder safety belts. Rear safety belts have a cinch capability for child seats.*



### Side Air Bags

*New side air bags for both front-seat occupants are optional in every 1998 Prizm.*



### Child Security Rear-Door Locks

*Standard child security rear-door locks when engaged, prevent rear doors from being opened from the inside.*



*Prizm LSi Sedan in Cashmere Taupe Mica-Metallic  
with optional alloy wheels.*

# Genuine Customer Care. You Never Travel Alone.

## New Vehicle Limited Warranty

This warranty is for GM vehicles registered in the United States. Please see your Chevrolet dealer for complete terms and conditions of this New Vehicle Limited Warranty.

### What Is Covered For 3 Years/36,000 Miles:\*



The complete vehicle



Sheet-metal coverage:

- Corrosion coverage
- Rust-through coverage†



Tires



Repairs made to correct any vehicle defect



Towing to your nearest Chevrolet dealership



No charge for warranty repairs.

\*Whichever comes first. †0 years or 100,000 miles, whichever comes first.

## Courtesy Transportation

Customers who purchase or lease a 1998 Chevrolet Prizm are eligible for Courtesy Transportation (at no charge) when their vehicles are left at a participating dealership for repairs covered

under the 3-year/36,000-mile New Vehicle Limited Warranty. Courtesy Transportation, at participating dealers only, may include shuttle service, expense reimbursement or, if the repair requires

the vehicle to stay at the dealership overnight, vehicle rental. Actual services may vary at the election of the participating dealer. See your dealer for details.

## Roadside Assistance\*

Roadside Assistance service is provided through a toll-free 800 number, 24 hours a day, 365 days a year. Roadside Assistance advisors can assist with minor mechanical problems over the phone or coordinate a variety of services through Chevrolet dealers' preferred service providers.

*\*Roadside Assistance membership is free. Some services may incur costs. Courtesy Care is available to retail, retail lease and corporate lease customers operating 1994 and newer Chevrolet vehicles for a period of 3 years/36,000 miles, whichever comes first. All Courtesy Care services and associated costs must be prearranged by Chevrolet Roadside Assistance or Dealer Service Management and must be driver-initiated. Basic Care and Courtesy Care are not part of or included in the coverage provided by the New Vehicle Limited Warranty. Chevrolet reserves the right to modify or discontinue Basic Care and Courtesy Care at any time. See dealer for complete details of the Chevrolet Roadside Assistance Program.*

### Basic Care Provides:



Toll-free access  
1-800-CHEV-USA



Basic over-the-phone technical advice



Free towing to nearest dealer for warranty repairs



Dealer services at reasonable cost (i.e., wrecker services, locksmith/key service, glass repair, etc.).

### Courtesy Care, Which Applies For 3 Years/36,000 Miles, Provides:



Basic Care services



Free fuel delivery



Free locksmith/key service (when keys are lost on road or locked inside)



Free non-warranty towing



Free flat tire change service



Free jump start.

# Prizm Buyer's Guide

## Preferred Equipment Group

**NOTE:** These optional Preferred Equipment Groups (PEGs) help simplify the buying process. Just choose the 1008 Prizm PEG containing the equipment you desire. You may also add selected individual options. (See Standards & Options chart below for model availability.) Some restrictions may apply. Please see your Chevrolet salesperson for details.

Preferred Equipment Group	Sedan			LSi Sedan		
	1	2	3	1	2	3
Standard Equipment	■	■	■			
LSi Equipment				■	■	■
Electronically Tuned AM/FM Stereo with Seek, Digital Clock and Four Speakers	■					
Electronically Tuned AM/FM Stereo with Seek, Digital Clock, Four Speakers and Cassette Player		■		■		
Electronically Tuned AM/FM Stereo with Seek, Digital Clock, Four Speakers and CD Player						■
Floor Mats: Front and Rear, Carpeted, Color-Keyed	■	■				
Full Wheel Covers	■	■				
Air Conditioning with CFC-Free Refrigerant	■	■		■	■	
Cruise Control with Resume Speed		■		■	■	
Power Door Locks		■				
Power Windows						■
Tilt-Wheel™ Adjustable Steering Column						■
Handling Package (includes front stabilizer bar, P185/65R-14 all-season steel-belted radial B/W tires)						■

## Standards & Options

**NOTE:** Some individually available options listed below may be included in specific Preferred Equipment Groups (see chart above). Some restrictions may apply. Please see your salesperson for details.

Exterior	Sedan	LSi Sedan
	Daytime Running Lamps, with Automatic Exterior Lamp Control	S
Black body-side moldings	S	S
Black door window frames	—	S
Body-color front and rear bumpers	S	S
Composite halogen headlamps	S	S
Dual outside mirrors (LH and RH manual remote)	S	—
Dual power outside mirrors	—	S
Marked body parts	S	S
Tinted glass	S	S
Variable intermittent wipers	S	S
Interior	Sedan	LSi Sedan
	Air conditioning (with CFC-free refrigerant)	O
Cargo-area light	S	S
Center console with dual cup holders, storage tray, coin box and rear cup holder	S	S
Child security rear-door locks	S	S
Cruise control with Resume Speed	O	O
Day/night inside rearview mirror	S	S
Delayed entry/exit lighting	S	S
Driver and front-passenger side air bags	O	O
Dual visor vanity mirrors and straps (driver's covered)	S	S

Interior (contd.)	Sedan	LSi Sedan
Electric sunroof with map light and pop-up feature	O	O
Floor mats, front and rear, carpeted, color-keyed	O	S
Front shoulder safety belt height adjusters	S	S
Next Generation driver and front-passenger air bags	S	S
Power door locks	O	S
Power windows with lock-out feature	—	O
Rear-window defogger	O	O
Remote fuel filler door and trunk release	S	S
Remote Keyless Entry	—	S
Scotchgard™ Protector on cloth seats and door trim	S	S
Tachometer with outside temperature monitor	O*	O*
Tilt-Wheel™ Adjustable Steering Column	O	O
Trip odometer (dual mode)	S	S

\*Includes trip odometer.

### Seats

	Sedan	LSi Sedan
Cloth seat trim and cloth door trim	S	—
Custom Cloth seat and door trim	—	S
Split-folding 60/40 rear seat w/pass-through feature	—	S
Integral child safety seat (includes non-folding right rear seat)	—	O

### Delco Electronics Sound Systems

**NOTE:** Sound systems include an Electronically Tuned Receiver (ETR) with AM/FM stereo, seek feature, digital clock and four speakers.

	Sedan	LSi Sedan
AM/FM stereo with four speakers	O	O
AM/FM stereo with integral cassette player and four speakers (front speakers premium coaxial)	O	O
AM/FM stereo with integral compact disc player, and four speakers (front speakers premium coaxial)	O	O

### Power Teams/Chassis

	Sedan	LSi Sedan
1.8 Liter, 16-valve, 4-cylinder engine with dual overhead camshafts and Sequential Fuel Injection	S	S
5-speed manual transmission	S	S
3-speed automatic transmission	O	O
4-speed automatic transmission (electronically controlled)	O	O
Four-wheel anti-lock brake system (ABS)	O	O
Handling Package (includes front stabilizer bar, P185/65R-14 all-season steel-belted radial B/W tires)	—	O
Power front disc/rear drum brakes	S	S
Rack-and-pinion power steering	S	S
Rear stabilizer bar	S	S
Stainless-steel exhaust system	S	S

### Wheels/Tires

	Sedan	LSi Sedan
14" styled steel wheels with center caps	S	—
14" full wheel covers	O	—
LSi full wheel covers	—	S
14" alloy wheels	O	O
P175/65R-14 all-season steel-belted radial tires	S	S
P185/65R-14 all-season steel-belted radial tires	—	O*

S — Standard. O — Optional. \*Requires Handling Package.



# Prizm Colors And Trim

## Exterior Colors



Apricot Ice Mica-Metallic\*

Available interior: Light Neutral



Ruby Pearl Mica\*

Available interiors: Dark Charcoal, Light Neutral



Black Mist Metallic\*

Available interiors: Dark Charcoal, Light Neutral



Midnight Emerald Mica\*

Available interiors: Dark Charcoal, Light Neutral



Pacific Blue Mica\*

Available interior: Dark Charcoal



Lavender Pearl Metallic\*

Available interior: Dark Charcoal

## Standard Cloth Trim

Dark Charcoal

Light Neutral



## Wheel Choices



Canyon Red Mica-Metallic\*

Available interiors: Dark Charcoal, Light Neutral



14" wheel with Black center cap.  
Standard on Prizm Sedan.



14" full wheel cover.  
Optional on Prizm Sedan.



Cashmere Taupe Mica-Metallic\*

Available interior: Light Neutral



14" LSi wheel cover.  
Standard on Prizm LSi Sedan.



14" alloy wheel. Optional on  
Prizm and Prizm LSi Sedans.



White

Available interiors: Dark Charcoal, Light Neutral

\*Basecoat/clearcoat paint.

## LSi Custom Cloth Trim

Dark Charcoal

Light Neutral



# Additional Information

## Data

### Exterior Dimensions (in.)

Wheelbase	97.0
Length (overall)	174.2
Width (overall)	66.7
Height (overall)	53.7

### Interior Dimensions (in.)

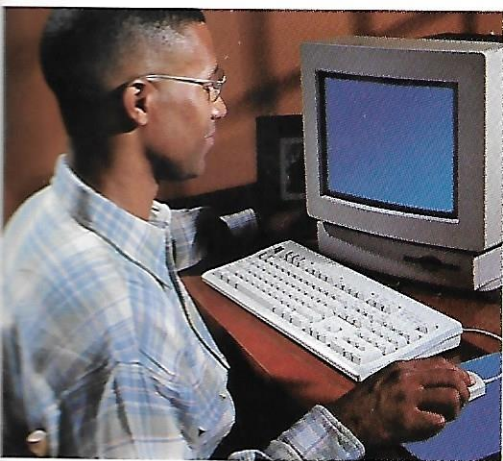
Headroom — front	39.3
Headroom — rear	36.9
Legroom — front	42.5
Legroom — rear	33.2
Shoulder room — front	52.8
Shoulder room — rear	52.2

### Capacities

Passenger capacity	5
Luggage capacity (cu. ft.)	12.1
Fuel tank capacity (gal.)	13.2

### Trailerling

Trailer classification	Light
Gross trailer weight (lbs., up to)	1500
Maximum tongue load (lbs.)	150



### Customer Assistance

The Chevrolet Customer Assistance Center (CAC) has a special toll-free number (1-800-222-1020). It puts you in contact with Chevrolet experts who can handle any product/service question or problems you may have.

## A Word About...

### GM Protection Plan

The available GM Protection Plan offers service protection in addition to that provided by GM's New Vehicle Limited Warranty. Ask your dealer about it. Coverage available only in the U.S. and Canada.

### Engines

Chevrolets are equipped with engines produced by different operating units of GM, its subsidiaries or suppliers to GM worldwide.

### Corrosion Protection

Chevrolets are designed and built to resist corrosion. All body sheet-metal components are warranted against rust-through corrosion for 6 years or 100,000 miles, whichever comes first. Application of additional rust-inhibiting materials is not required or recommended. See your Chevrolet dealer for terms of this limited warranty.

### Assembly

Chevrolets are assembled by different operating units of General Motors, its subsidiaries or suppliers to GM worldwide. Chevrolets incorporate thousands of components produced by different operating units of GM, its subsidiaries or suppliers to GM worldwide. We sometimes find it necessary to produce Chevrolets with different or differently sourced components than originally scheduled. All such components have been approved for use in Chevrolets and will provide the quality performance associated with the Chevrolet name. Since some options may be unavailable when your vehicle is assembled, we suggest that you verify that your vehicle includes the equipment you ordered or, if there are changes, that they are acceptable to you.

### Updated Service Information

Chevrolet regularly sends its dealers useful service bulletins about Chevrolet products. Chevrolet monitors product performance in the field. We then prepare bulletins for servicing our products better. Now you can get these bulletins, too. Ask your dealer. To get ordering information, call toll free 1-800-551-4123.

### Product Information

For additional information on 1998 Chevy car or truck products, call 1-800-950-2438 or visit us at our Web site address: <http://www.chevrolet.com>

### Important: A Word About This Brochure

We have tried to make this brochure as comprehensive and factual as possible. We reserve the right, however, to make changes at any time, without notice, in prices, colors, materials, equipment, specifications, models and availability. Since some information may have been updated since the time of printing, please check with your Chevrolet dealer for complete details.

### Turn Plastic Into Steel With The GM Card®

The GM MasterCard® with no annual fee (standard GM Card only) gives you an important financial advantage on your next purchase or lease of a GM vehicle. Use the GM Card® for purchases and you'll receive up to 5% of that purchase amount in GM Card Earnings. You can earn as much as \$500 per Account Year, for a maximum of \$3,500 over a period of seven years. That's over and above any other discount or incentive. To request your GM Card, call 1-800-8GM-CARD.



SMARTLEASE by GMAC makes it easy to enjoy a brand-new Prizm. With SMARTLEASE, qualified customers can be approved in about one hour, and you'll enjoy low SMARTLEASE monthly payments. Plus,



SMARTLEASE offers you choices at the end of your lease. You can either buy your Prizm at a price guaranteed up front, or return your vehicle with no other obligations — providing the terms of the lease have been met. For more information about SMARTLEASE or any of the other quality GMAC financing options, see your Chevrolet dealer or call 1-800-32-SMART.



**A note about air bags:**  
Always wear safety belts, even with air bags.

General Motors, GM, the GM Emblem, TheftLock, PASS-Key, Prizm, Chevrolet and the Chevrolet Emblem are registered trademarks and Chevy is a trademark of the General Motors Corporation. "Scotchgard" is a registered trademark of 3M. GMAC and SMARTLEASE are registered trademarks of the General Motors Acceptance Corporation. ©1997 General Motors Corporation. All rights reserved.

Litho in USA

July 1997



CHEVROLET PRIZM 