

1992 GMC TRUCK™
SONOMA





THE STRENGTH OF EXPERIENCE.

COMPACT PICKUPS BUILT TO LIVE UP TO A
B I G N A M E
I N T R U C K S

At GMC Truck, our only business is trucks. And has been for over 80 years. Everything from medium-duties and big pickups, to fire engine chassis and the chassis for the bus you rode to school.

A devotion to basic truck values you see reflected in our 1992 Sonomas. **C**ompact pickups built in the image of our big trucks, with the strength of double walls of steel and the added safety of rear-wheel anti-lock brakes.*

Trucks let you make your mark with the taut technology of 280 intercooled, turbocharged horsepower. **W**e invite you to read about this line of very special 1992 compact pickups: the only ones built strong enough to carry the name, GMC Truck.

*Operate in 2WD only.

INDEX

The GMC Truck Heritage . . .	2-3
Engineering	4-5
Syclone	6-7
2-Wheel Drive	8-9
4x4 Insta-Trac	10-11
Club Coupe	12-13
Trim Levels	14-15
Color/Seating Availability . .	16
Dimensions & Technical Data	17
Exterior & Functional Equipment . . .	18
Interior Equipment	19
Order Worksheet	19a
Quick Order EZ-Specs	19b
Financing/ About GMC Truck	20
Owner Benefits	21
Commitment Plus	22

Cover.
The SLE-trim Sonoma is shown in Garnet and Steel Gray Metallic with available equipment.

At left.
The pickup! As classic an example of Americana as Shaker chairs. And—with GMC Truck—as enduring. Our Syclone gives hauling a whole new meaning. The blue '54 1/2-Ton from GMC Truck offers a testimonial to reliable engineering.

WHAT MAKES THE SONOMA A GMC TRUCK

QUALITIES THAT HELP GIVE GMC TRUCK ITS TRADITIONAL HIGH RESALE VALUE.

It takes a special kind of truck to earn that special honor. Trucks with major body parts made of single stampings for rigidity; double-wall steel hood, doors, front fenders, cargo box sides and tailgate for strength. An independent front suspension and 2-stage multi-leaf rear springs that adjust to a load to help provide a smooth stable ride, empty or loaded. Anti-chip coatings on exterior lower body panels, two-sided galvanized steel and coated rear springs, axle and frame

for corrosion protection so complete additional rustproofing isn't even recommended. The sophistication and security of a computer-controlled rear-wheel anti-lock brake system.[†] A standard 160 SAE net horsepower, 4.3L V6. The Vortec. A Delco Freedom II battery that never needs water. Tires with built-in tread wear indicators. Front disc brake pads with audible wear sensors. An engine that's fine-tuned by an on-board computer while you drive. Tinted glass.

On our base SL and our other Sonomas you get even more: A big 20 gallon fuel tank,^{**} full-size spare and a handy crank down carrier to store it neatly up under the rear of the truck. Steel-belted radials all around, AM/FM stereo with

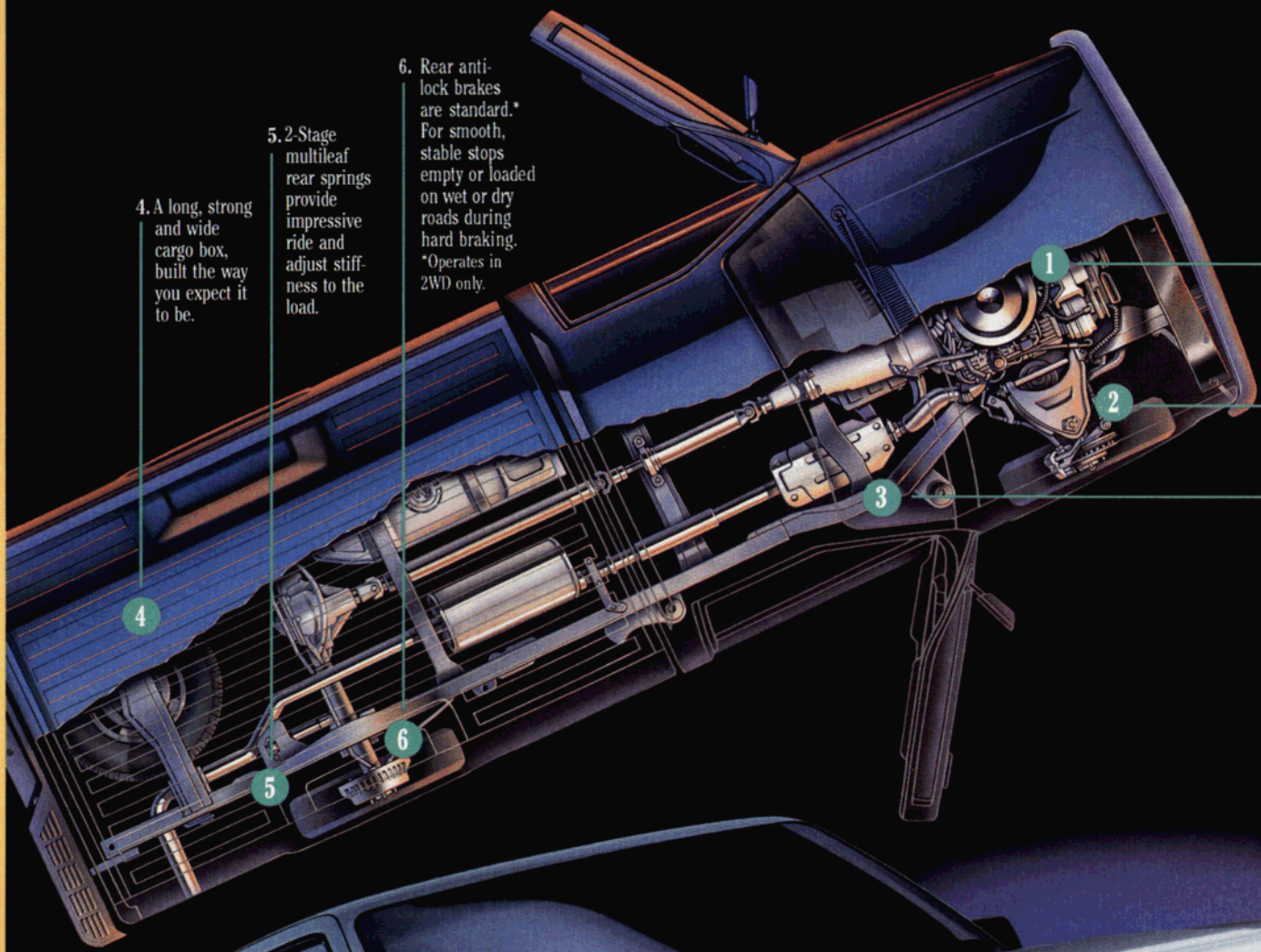
seek/scan and digital clock, trip odometer, map pockets, blacked out trim set off with bright wheel opening moldings. And perhaps the sweetest siren call of all, the option of ordering up the newest engine you can get in a GMC Truck: the big 4.3L high performance (HP) V6. It's a swirling package of potency fine-tuned to new heights for 1992. In fact, if power's the button that makes you sit up and grin, turn the page. You're about to be blown away.

[†]Operates in 2-wheel drive only.

^{**}X81 2WD has standard 13-gal. tank.

At right. Base trim Sonoma SL is shown in Light Blue, with available equipment.

Inset. Standard analog gages monitor aspects of engine operation.



1. Electronic Fuel Injection is standard w/ Sonoma's base 2.5L (on 2WD) and available 4.3L V6 engines (standard on 4WD).

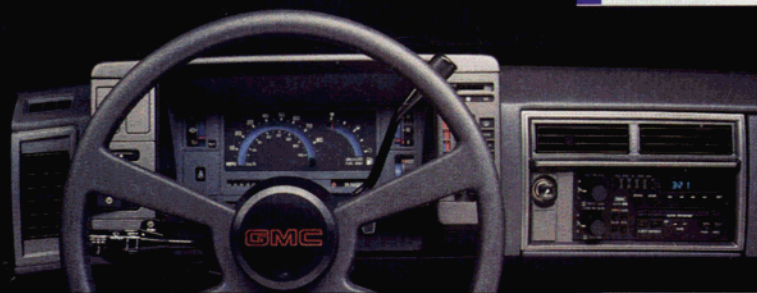
2. Independent front suspension, for ride, handling and durability.

3. Solid C-channel frame construction, with box-shaped front section for added strength.

4. A long, strong and wide cargo box, built the way you expect it to be.

5. 2-Stage multileaf rear springs provide impressive ride and adjust stiffness to the load.

6. Rear anti-lock brakes are standard.* For smooth, stable stops empty or loaded on wet or dry roads during hard braking. *Operates in 2WD only.



0-60 IN 4.6 SECONDS

ON SEPT. 14, 1990, A SPECIALLY MODIFIED GMC PICKUP RE-WROTE HISTORY BY CLOCKING 210.069 MPH IN THE FLYING MILE.[†]

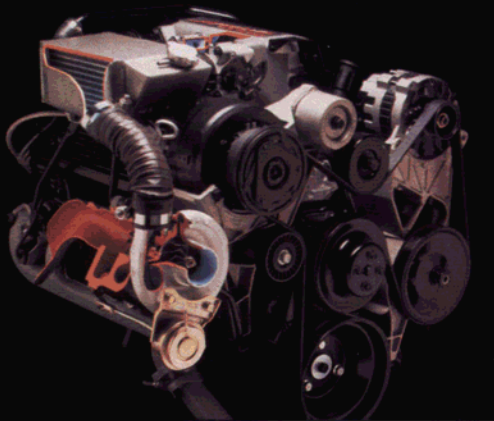
No one knows more of what a truck can be than GMC Truck.

One very quick example: Our incredible GMC Syclone. With its 280 SAE net hp, intercooled, turbocharged 4.3L V6, full-time all-wheel drive and 4-wheel anti-lock brakes, it's a statement

of contemporary engineering, indeed. A rolling testament to GMC Truck's commitment to leadership in truck technology that provides world class acceleration levels of 0-to-60 in 4.6 seconds. And since we believe there should be no end to a good thing, you'll see the Syclone influence on other Sonomas this year. Especially in the one waiting for you on the next page.



SYCLONE



Inset far left. An interior to match an expensive sports car's. Standard, too, are 16" styled aluminum wheels and speed-rated radial-ply tires.

Inset left. 262 cubic inches of intercooled turbocharged V6 power, developing 280 SAE net horsepower. Full-time all-wheel drive puts the power to the pavement. 4-wheel anti-lock brakes bring it to a smooth stop.

† Modified for safety and to meet sanctioning requirements, and driven on a closed, controlled course, with a professional driver.

At left. Shown in Midnight Black, Syclone is also available in Aspen Blue Metallic, Bright Teal, Apple Red and Frost White.

Below. Analog gages monitor aspects of Syclone operation.



OWN THE STREET

IT STARTS WITH A 195 SAE NET HP 4.3L V6. AND IT JUST GETS BETTER FROM THERE.

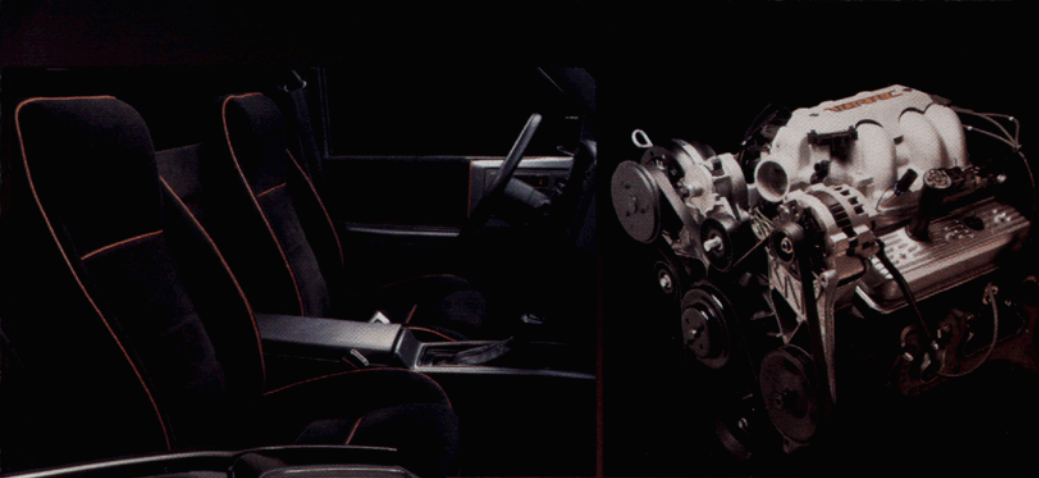
Ticking under the hood of our new Sonoma GT is the next best thing to Syclone's full-blown power: The new 195-hp 4.3L High Performance (HP) V6.

Also standard: Syclone's front air dam and side skirts grounded by 15" styled wheels and low-profile radial rubber with a special sporting suspension. A street

truck equally adept at moving through the moonlight. Or slowing down owners of every other truck out there for long second looks and low whistles of envious approval at the stoplights.

Plus another performance feature we think you'll appreciate in a truck that looks this good and goes this well. A price that's every bit as finely-tuned as Sonoma GT's muscle.





Inset far left.
An interior
for cruising or
quick touring.
It's standard on
Sonoma GT.

Inset left. The
newest high
performance
engine available
in a GMC truck
is this 195 SAE
net horsepower
4.3L V6. It de-
velops 260 lb-ft
of torque at
3600 RPM.



The 1992
Sonoma GT by
GMC Truck.
Available as
shown in Mid-
night Black.
Also; Aspen
Blue Metallic,
Bright Teal,
Apple Red and
Frost White.





Far right.
Sonoma's
bench seat in
Charcoal
Custom Cloth.

At left.
Insta-Trac
makes
engaging
4WD simple.

Below.
Sonoma
shown in
Frost White
with available
equipment.





OWN THE OUTDOORS

STANDARD INSTA-TRAC. PLUS THE 4.3L V6 WITH 160 SAE NET HP, STANDARD.

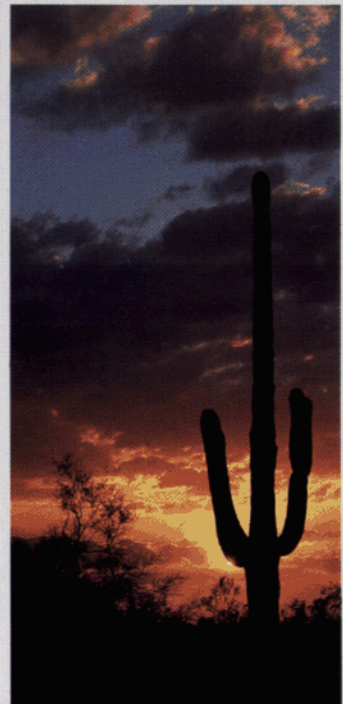
If you itch to put distance between you and just about everything else out there, shake hands with a new GMC Sonoma 4X4.

For two reasons. First, up front is the potent package of standard power: the 4.3L Vortec V6. The one with 160 SAE net horsepower and a strong 230 lb-ft of torque.

Second, engaging 4WD is something that's wonderfully hassle-free. You simply lean down, shift a lever and keep right on going. Thanks to a 4-wheel drive Insta-Trac system so smooth, proven and reliable it comes with its own patent. It gets even simpler with available Electric Shift Transfer Case (NP1). Press the dash-

mounted rocker switch and you're in 4WD. Absence of floor shift lever makes for more leg-roominess, and it's quiet, too.

There's also a special off-road suspension package (ZM6) available with gas-charged Delco®/Bilstein shocks, heavy-duty torsion bars, special jounce bumpers and stabilizer bar. And since your GMC Truck dealer is into 4X4 truckin' as much as you are, he's also a source for add-on accessories. Which makes your first step in putting distance between you and all the other 4X4s real easy: getting real close with your GMC Truck dealer.



14.6 EXTRA INCHES OF GMC TRUCK VALUE

SOME OF THE ELEMENTS OF A SEDAN. PLUS ALL THE QUALITIES AND STRENGTHS OF A GMC TRUCK.

What a great idea: a truck with a back seat. And the nice thing about our Club Coupe's 18.4 cu. ft. of extra space is you can leave it as carpeted storage for carrying personal valuables. Or add the optional fold-down jump seats and with front buckets, take three people along for the ride.

You can also order up, say, a base Club Coupe and add your own options; though, FM stereo with four speakers to bounce sounds off all those double walls of steel is standard.

Whichever way you go, you'll end up with one very exclusive truck. Also, check the available 4.3L (HP) engine.



CLUB COUPE





Below left. Available Blue Custom Cloth reclining buckets and Insta-Trac are shown in this Sonoma (Club Coupe) interior. New high-back seats are super comfortable.

At left. SLE-trim Sonoma (Club Coupe) is shown with available equipment in Aspen Blue Metallic and Steel Gray Metallic.

Sonoma short cargo box has 73.1" of loading length and long box measures 89.0".

TRIM LEVELS

THE TERM "PLUSH" IS NO LONGER LIMITED TO LUXURY SEDANS

OUR NEW APPROACH TO TRIM LEVELS LETS YOU HAVE WHATEVER YOU WANT.

When describing our top trim packages, it's tempting to use terms normally reserved for upscale sedans: posh, luxurious, well-appointed. From deep-cushioned seating to simple, readable instrumentation, our new Sonomas are surprisingly comfortable. Whether you prefer the Vinyl, Custom Cloth, Special Custom Cloth, or even the Ultrasoft Leather†, in the seating areas, we're quite certain you'll feel good inside any new Sonoma. We've added a host of options to make sure you can pick any amenity you want to have right at your fingertips.

New this year, GMC Truck lets you add any option package to any trim level (except X81). For example, you now can outfit a base trim level with most available features. Or take our SLE trim and add just the basic necessities. This way, you're sure to get a Sonoma that suits you perfectly. Here's a highlight of standard features. For a full list of both standard features and options, see fold-out pages 18 and 19.

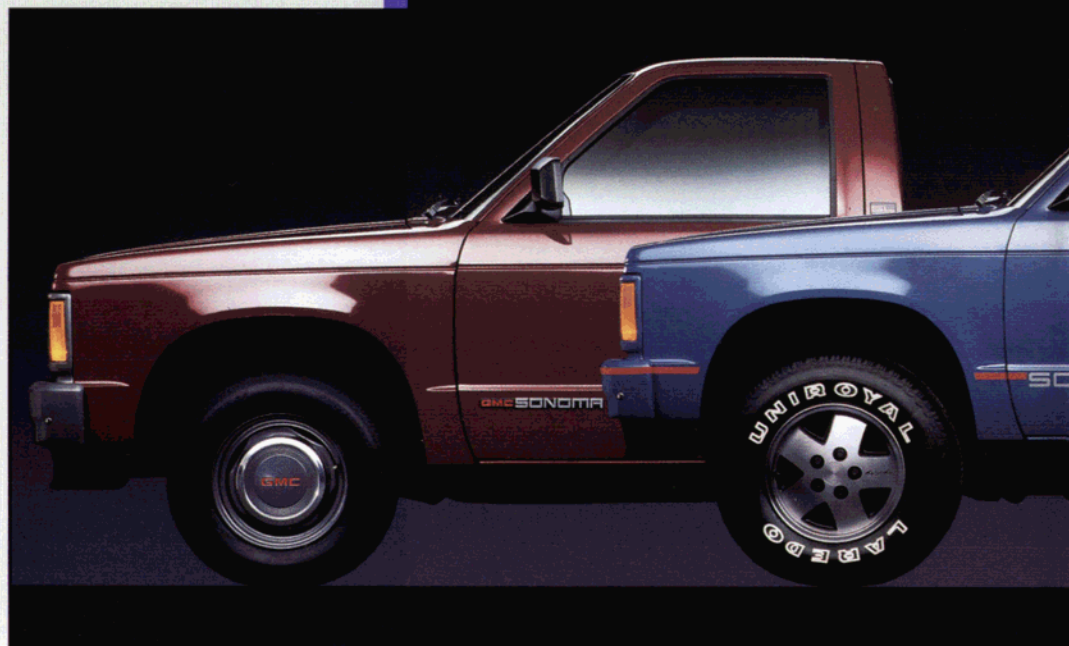
† Extended cab only.

SL TRIM



The SL for Sonoma by GMC Truck is our base trim level. It's what you get on every Sonoma and it's likely to change your mind about the meaning of the word, "standard:"

- Front and available rear bumpers, gray-painted.
- Choice of 10 exterior colors in solid (ZY1) paint scheme.
- Choice of four interior colors, in choice of Custom Vinyl or Custom Cloth-trimmed, 3-passenger front bench seat, with forward-folding backrest and 3-position headrests.
- Five all-season, steel-belted radial tires, with convenient winch-type spare tire carrier mounted under the frame at the rear.
- AM/FM stereo radio, electronically tuned, with seek/scan, digital clock and fixed mast antenna.
- Deluxe heater/defroster, with side window defogger vents.
- Gray-painted, molded plastic grille.
- Rectangular halogen headlamps.
- Black-finished RH and LH adjustable head rearview mirrors.



SLS TRIM



Sonoma takes on its sportiest appearance with the SLS trim level. Some features described below are in addition to, or upgrades of, items on the standard SL trim level. Included among SLS trim level are:

- Body-colored bumpers with solid paint (lower body-colored bumpers with ZY3 paint).
- Choice of five exterior colors in solid (ZY1) paint scheme.
- Choice of four interior colors, in choice of Custom Vinyl or Custom Cloth-trimmed, 3-passenger front bench seat, with forward-folding backrest and 3-position headrests (regular cab).
- Color-keyed full floor carpeting, headliner with full roof coverage, and padded RH and LH sunshades.
- Rally wheels with black center insert and "GMC" in red letters (on 2WD models).
- Body-colored, molded plastic grille with solid ZY1 paint (lower body-colored grille with ZY3 paint).
- AM/FM stereo radio, electronically tuned, with seek/scan, digital clock and fixed mast antenna.
- Deluxe heater/defroster, with side window defogger vents.



SLE TRIM



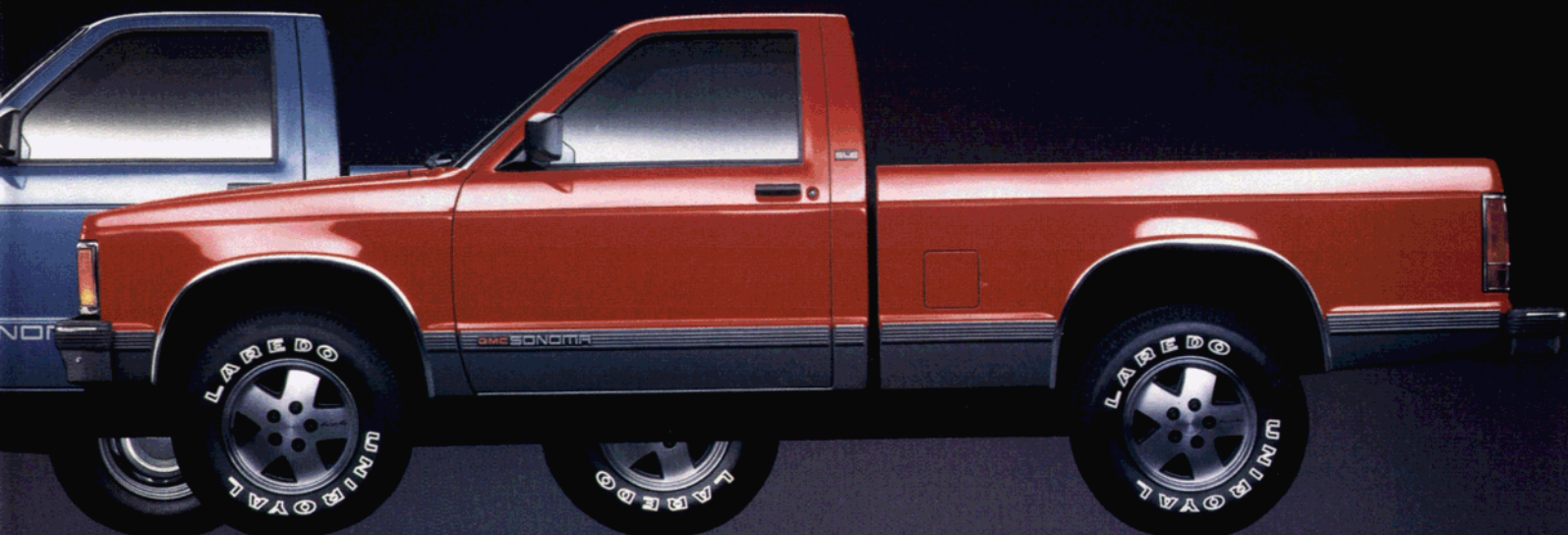
The SLE-level Sonoma achieves a surprisingly pleasant balance between carlike comfort and the all around usefulness for which compact pickups from GMC Truck are so renowned. Included with the SLE trim are:

- Body-colored bumpers with rub strips in ZY1 paint (lower gray-colored bumpers with rub strips in ZY2 paint).
- Chrome grille.
- Choice of 10 exterior colors in solid (ZY1) paint scheme.
- Choice of four interior colors, in choice of Custom Vinyl, Special Custom Cloth, or Custom Cloth-trimmed, 3-passenger front bench seat, with folding backrest and 3-position headrests.
- AM/FM stereo radio, electronically tuned, with seek/scan, digital clock and fixed mast antenna.
- Deluxe heater/defroster, with side window defogger vents.
- Rally wheels with trim rings, including black center inserts with "GMC" in red (on 2WD models). Steel wheels with trim rings (on 4WD).



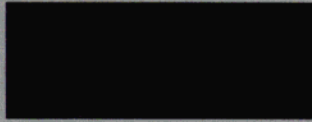
Top, from left. Base 2WD SL. Sonoma shown in solid (ZY1) Garnet (#48) paint. Next is the Sonoma SLS with 4WD in solid Aspen Blue Metallic (#24). SLE-level, 4WD shown in (ZY2) Conventional 2-tone with Apple Red (#72) upper and Steel Gray Metallic (#90) lower. SLS and SLE trims shown w/EZ-Spec Group 4. All shown with available below-eye-line mirrors (D44).

Bottom, from left. SL interior is shown in Garnet Custom Vinyl. SLS trim features a Gray Custom Cloth-bench with available Electric Shift Transfer Case. SLE shown with Charcoal Special Custom Cloth buckets.



COLOR AND TRIM

EXTERIOR COLORS



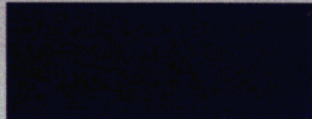
Midnight Black #19



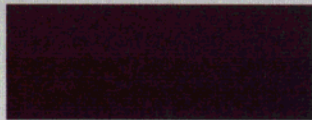
Aspen Blue Metallic #24



Light Blue #26



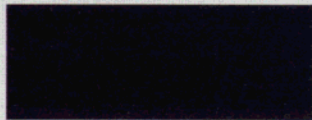
Royal Blue Metallic #47



Garnet #48



Steel Gray Metallic #90



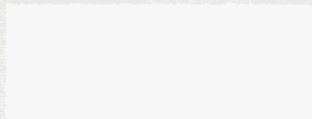
Forest Green Metallic #44



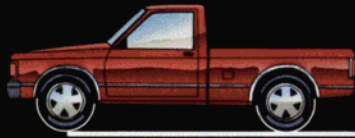
Apple Red #72



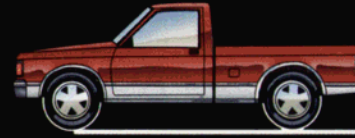
Bright Teal #25



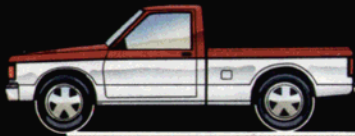
Frost White #12



Solid (ZY1) paint is available in a wide choice of colors.



Conventional 2-tone (ZY2) is available with lower gray accent on SLE trim.



Special two-tone (ZY3) available on base SL and SLS Sport trim.

EXTERIOR-INTERIOR COLOR COMPATIBILITY

EXTERIOR SOLID COLORS	CODE	INTERIOR TRIM COLORS			
		BLUE	CHARCOAL	GARNET	GRAY
Midnight Black	19		■	■	■
Aspen Blue Metallic	24	■			■
Light Blue	26	■			■
Royal Blue Metallic	47	■			■
Garnet	48		■	■	■
Steel Gray Metallic	90		■	■	■
Forest Green Metallic	44		■		■
Apple Red	72		■	■	■
Bright Teal	25		■		■
Frost White	12	■	■	■	■

MODEL SELECTOR/SEAT AVAILABILITY

Body Type	Drive Type	Trim Level	Front Bucket Seats	Front Bench Seat	Rear Jump Seat [†]	Total Available Passenger Capacity	Approx. Interior Cargo Cap. (cu ft) [*]
Reg Cab	2WD	SL/SLS/SLE	Avail	Std	N/A	2-3	2.2
Reg Cab	4WD	SL/SLS/SLE	Avail	Std	N/A	2-3	2.2
Club Coupe	2WD	SL	Avail	Std	Avail	2-4	18.4**
Club Coupe	2WD	SLS	Std	Std	Avail	2-4	18.4**
Club Coupe	4WD	SLS	Std	Std	Avail	2-4	18.4**
Club Coupe	2WD	SLE	Avail	Std	Avail	2-4	18.4**
Club Coupe	4WD	SLE	Avail	Std	Avail	2-4	18.4**

^{*}With rear seat folded down. [†]Requires Club Coupe model equipped with Bucket Seats.
N/A - Not available. ^{**}13.8 with jump seats.



SELECTED OPTIONS



Wheels for Sonoma: clockwise from top left, (N60) gray paint available Cast Aluminum for 2WDs; (ZJ7) available Rally with trim ring; (N90) gray tint available Cast Aluminum for 4WD; standard steel with hubcap for 2WD; standard 14-hole steel wheel for 4WD.

QUICK ORDER EZ-SPECS

It's simple. Just pick a package and then pick a trim level.

- No Deletions Allowed
- Additional Options May be Added
- Upgrades Allowed Where Indicated
- Check Additional Options for Compatibility/Availability

QUICK ORDER EZ-SPECS provide a quick, easy and economical way to select and order combinations of the most frequently ordered options and special equipment which may provide significant savings over ordering each item separately. Potential savings based on MSRP of option package vs. options purchased separately.

REGULAR CAB MODEL PACKAGE CONTENT SL • SLS • SLE	PACKAGE			
	A1A1	A1A2	A1A3	A1A4
EZ-Spec Group 1 Wideside	X	X	X	X
EZ-Spec Group 2 Mirrors, Black (Incl. with YC2) Steering, Power (Std. on 4WD) Tilt-Wheel™ Steering & Intermittent Wipers Bumper, Rear Step (Painted)		X	X	X
EZ-Spec Group 3 Cruise Control, Electronic Radio: ETR AM/FM Stereo w/Seek-Scan, Cassette and Clock (Upgrade A) Mirrors: Interior Rearview with Dual Reading Lamps Springs: Rear, Heavy-Duty			X	X
EZ-Spec Group 4 Radio: ETR AM Stereo/FM Stereo w/Seek-Scan, Cassette, Graphic Equalizer and Clock (Upgrade B)† Suspension, Sport (2WD Only) Shield Package (Under Body) (4WD Only) Power Door Locks and Power Windows Wheels, Aluminum (4WD Only)				X

Allowable Upgrades (Where Available):
(A) UM6 Radio may be upgraded to UX1 Radio or UIC Radio/CD Player
(B) UX1 Radio may be upgraded to UIC Radio/CD Player

CLUB COUPE MODEL PACKAGE CONTENT SL • SLS • SLE	PACKAGE			
	B2A1	B2A2	B2A3	B2A4
EZ-Spec Group 1 Wideside	X	X	X	X
EZ-Spec Group 2 Mirrors, Black (Incl. with YC2) Tilt-Wheel™ Steering & Intermittent Wipers Bumper, Rear Step (Painted)		X	X	X
EZ-Spec Group 3 Cruise Control, Electronic Radio: ETR AM/FM Stereo w/Seek-Scan, Cassette and Clock (Upgrade A) Mirrors: Interior Rearview with Dual Reading Lamps Springs: Rear, Heavy-Duty			X	X
EZ-Spec Group 4 Radio: ETR AM Stereo/FM Stereo w/Seek-Scan, Cassette, Graphic Equalizer and Clock (Upgrade C)† Shield Package (Under Body) (4WD Only) Power Door Locks and Power Windows Wheels, Aluminum (4WD Only) Glass, Deep-Tinted Tires: P215/65R15 Sport, raised W/L (2WD) (Upgrade D)				X

Allowable Upgrades (Where Available):
(A) UM6 Radio may be upgraded to UX1 Radio or UIC Radio/CD Player
(B) AV5 Cloth Seats may be upgraded to **2 Ultrasoft Leather Seats
(C) UX1 Radio may be upgraded to UIC Radio/CD Player
(D) QPP Tires Which Includes ZJ7-Rally Wheels may be upgraded to N60 Aluminum Wheels

◀ S-Standard
A-Available
1-Except X81 Special model.
2-Included with standard radio.
3-Requires available bucket seats.
4-Includes cab back panel.
5-4x4 models only.
6-Also includes seek-scan, digital clock, stereo dual rear speakers and mast-type antenna. Radio delete on SL Sport models only.
7-Deletes standard carpeting.
† Receives C-Quam® AM stereo broadcasts. Most AM stations across the country broadcast in C-Quam but some do not. Check your local stations for compatibility in your area.

EXTERIOR EQUIPMENT

MODEL • SONOMA		REGULAR CAB			CLUB COUPE		
TRIM LEVEL		SL ¹ (STD)	SLS ¹ (YC1)	SLE ¹ (YC2)	SL ¹ (STD)	SLS ¹ (YC1)	SLE ¹ (YC2)
AIR DAM WITH FOG LAMPS	4x2 models	A	A	A	A	A	A
BUMPER, FRONT	Painted (gray) with ZY1 paint	S	—	—	S	—	—
	Painted (lower body color)	—	S	—	—	S	—
	Painted (lower body color) with bright-trimmed rub strip (ZY1 paint)	—	—	S	—	—	S
	Chromed with bright-trimmed rub strip	A ^{1,2}	—	—	A ²	—	—
BUMPER, REAR STEP-TYPE	Painted (gray) with step pad	A	—	—	A	—	—
	Painted (lower body color) with step pad (ZY1 paint)	—	A	—	—	A	—
	Painted (lower body color) with bright-trimmed rub strips and step pad (ZY1 paint)	—	—	A	—	—	A
	Chromed with bright-trimmed rub strips and step pad	A ^{1,3}	—	—	A ³	—	—
DOOR HANDLES	Black finish	S	S	S	S	S	S
GLASS	Windshield and door, tinted	S	S	S	S	S	S
	Fixed rear window, tinted	S	S	S	S	S	S
	Sliding rear window	A	A	A	A	A	A
	Fixed quarter windows, tinted	—	—	—	S	—	—
	Swing-out quarter windows, tinted	—	—	—	—	S	S
	Deep-tinted glass for standard rear window	A ¹	A	A	—	—	—
	Deep-tinted glass for standard rear window and quarter windows	—	—	—	A ⁴	A	A
GRILLE WITH INTEGRAL HEADLAMP/SIDE MARKER LAMP BEZELS	Gray painted main body; dark gray air intake area with bright-outlined red GMC letters	S	—	—	S	—	—
	Body color painted main body; dark gray air intake area with bright-outlined red GMC letters	—	S	—	—	S	—
	Chromed main body; dark gray air intake, bright-o/1 red GMC	—	—	S	—	—	S
HEADLAMPS	Halogen-type rectangular unit	S	S	S	S	S	S
HORN	Single electric high-note	S	S	S	S	S	S
KEY CYLINDERS	Black finish	S	S	S	S	S	S
MIRRORS	Dual outside, conventional, black	S	S	—	S	S	—
	Dual outside, below-eyeline, black	A	A	S	A	A	S
MOLDINGS	Bodyside-gray with bright trim	—	—	S	—	—	S
	Wheel opening, bright	A ¹	A	S	A	A	S
	Wheel opening, black	A	A	—	A	A	—
	Windshield, black, reveal	S	S	S	S	S	S
PAINT/STRIPING	Solid paint in choice of 10 colors	S ⁵	—	S ⁵	S ⁵	—	S ⁵
	Special 2-tone paint, includes body striping at beltline	A ¹	A	—	A	A	—
	Solid paint in choice of 5 colors; includes highlighted red lower body and front bumper striping	—	S	—	—	S	—
	Conventional 2-tone paint, using 9 primary colors and Steel Gray Metallic as secondary color (ZY2)	—	—	A	—	—	A
TAILLAMP TRIM	Black	—	S	—	—	S	—
	Bright	—	—	S	—	—	S
WHEELS/WHEEL TRIM, 4x2 MODELS	Conventional disc, gray with bright hubcaps	S ⁶	—	—	S ⁶	—	—
	Rally; gray w/gray hub ornaments and bright wheel trim rings	A	—	S	A	—	S
	Aluminum Cast	A	A	A	A	A	A
WHEELS/WHEEL TRIM, 4x4 MODELS	14-hole disc; gray with gray hub ornaments	S ⁶	S ⁶	—	S ⁶	S ⁶	—
	14-hole disc; gray w/gray hub ornaments and bright wheel trim rings	—	—	S	—	—	S
	Cast aluminum (gray tint with blackout trim)	A ¹	A	A	A	A	A

FUNCTIONAL EQUIPMENT

MODEL • SONOMA		REGULAR CAB			CLUB COUPE		
TRIM LEVEL		SL (STD)	SLS (YC1)	SLE (YC2)	SL (STD)	SLS (YC1)	SLE (YC2)
CARRIER, FULL-SIZE	Winch-type	S ¹	S	S	S	S	S
SPARE TIRE	Winch-type	S ¹	S	S	S	S	S
COLD CLIMATE PACKAGE		A ¹	A	A	A	A	A
HEATER/DEFOGGER, DELUXE		S	S	S	S	S	S
HOOKS, FRONT TOW	4x4 models	S ⁸	S ⁸	S ⁸	S ⁸	S ⁸	S ⁸
VENTILATION, FLOW-THROUGH POWER		S	S	S	S	S	S
WINDSHIELD WIPER/WASHER SYSTEM	Conventional	S	S	S	S	S	S
	Intermittent	A ^{1,7}	A ⁷	A ⁷	A ⁷	A ⁷	A ⁷

SONOMA GT (Z74). A unique vehicle in the Sonoma lineup, its standard equipment includes: High performance 4.3L V6 (HP) • automatic transmission • sport chassis • special sport suspension • limited-slip positraction rear wheel drive • AM/FM stereo with seek/scan and digital clock • air conditioning • an extensive assortment of convenience items. Sonoma GT is available in Midnight Black, Aspen Blue Metallic, Bright Teal, Apple Red and Frost White paint. See your GMC Truck dealer for details.

INTERIOR EQUIPMENT

MODEL • SONOMA		REGULAR CAB			CLUB COUPE		
TRIM LEVEL		SL (STD)	SLS (YC1)	SLE (YC2)	SL (STD)	SLS (YC1)	SLE (YC2)
AIR CONDITIONING		A	A	A	A	A	A
ARMRESTS	Front door	S	S	S	S	S	S
CLOCK, ELECTRIC DIGITAL		S ^{1,2}	S ²	S ²	S ²	S ²	S ²
COAT HOOK	Right hand	S	S	S	S	S	S
	Left hand	—	—	—	S	S	S
CONSOLE, FLOOR-MOUNTED STORAGE		A ^{1,3}	A ³	A ³	A ³	S ³	A ³
CONVENIENCE GROUPS	Intermittent windshield wipers/Tilt-Wheel™ steering	A ¹	A	A	A	A	A
	Power door lock/power window combination	A ¹	A	A	A	A	A
CONVENIENCE TRAY		S ¹	S	S	S	S	S
FLOOR COVERING, FIXED	Black rubber, partial floor	S	—	—	S	—	—
	Charcoal vinyl-coated rubber, full floor	—	A ⁷	—	—	A ⁷	—
	Color-keyed carpet, full floor	A ¹	S	S ⁴	A	S	S ⁴
FLOOR MATS, FRONT REMOVABLE		—	A	S	—	A	S
GRAB HANDLE	Over RH front door	S ⁵	S ⁵	S ⁵	S ⁵	S ⁵	S ⁵
HEADLAMP WARNING BUZZER		S	S	S	S	S	S
HEADLINER	Partial coverage	S	S	—	—	—	—
	Full coverage	—	—	S	S	S	S
INSTRUMENT CLUSTER	Gage-type with trip odometer	S	S	S	S	S	S
	Electronic gage-type with trip odometer and tachometer (available with 4.3L engine only)	A	A	A	A	A	A
LAMPS	Front dome	S	S	S	S	S	S
	Courtesy; LH/RH	S	S	S	S	S	S
	Ashtray	S	S	S	S	S	S
	Glove box	S	S	S	S	S	S
	Engine compartment	S	S	S	S	S	S
LAMP SWITCHES, DOME & COURTESY	Front door	S	S	S	S	S	S
	Main light	S	S	S	S	S	S
LIGHTER, CIGARETTE		S	S	S	S	S	S
MIRRORS	Day/night rearview, conventional	S	S	S	S	S	S
	Day/night rearview, with dual reading lamps	A ¹	A	A	A	A	A
	RH visor, unlighted	—	S	S	—	S	S
	LH & RH visor, illuminated	A ¹	A	A	A	A	A
NAMEPLATE, TRIM LEVEL-INSTRUMENT PANEL		S	S	S	S	S	S
RADIOS, ELECTRONICALLY TUNED	AM/FM stereo ⁶	S	S	S	S	S	S
	AM/FM stereo with cassette tape player ⁶	A	A	A	A	A	A
	AM, with digital clock	A	A	A	A	A	A
	AM stereo/FM stereo with graphic equalizer and stereo cassette tape player with search-repeat ^{6,7}	A	A	A	A	A	A
	Disc Player, Compact	A	A	A	A	A	A
SEATS	Folding back front bench w/head restraints	S	—	S	S	—	S
	High-back front bucket, LH & RH	A ¹	S	A	A	S	A
	Rear jump, fold-down, LH & RH	—	—	—	A	A	A
SEAT BACK, BUCKET	Folding feature	S	S	S	S	S	S
	EZ-entry feature (RH seat)	—	—	—	S	S	S
	Reclining feature	—	—	—	S	S	S
STEERING WHEEL	Deluxe, black, 4-spoke	S	S	S	S	S	S
GLOVEBOX WITH LOCK		S	S	S	S	S	S
SUNSHADES, LEFT/RIGHT HAND		S	S	S	S	S	S
TRIM PANELS, DOOR-COLOR-KEYED PLASTIC	With map pockets	S	S	—	S	S	—
	With map pockets, cloth inserts, carpet trim & LH coin holder	—	—	S	—	—	S
TRIM PANELS, REAR COMPARTMENT	Upper	—	—	—	S	S	S
	Lower (with storage pockets)	—	—	—	—	—	S

SYCLONE (ZR9). A unique vehicle in the Sonoma lineup, its standard equipment includes: Intercooled and turbocharged 4.3L V6 • all-wheel-drive • 4-wheel anti-lock braking system • Cruise Control • special sport suspension • aluminum (turbine design) wheels • a unique paint and trim appearance including the GMC Truck logo. Among its other special fittings are: cloth sports buckets with lumbar and other adjustments • unique leather-wrapped steering wheel • unique AM/FM/cassette stereo with seek/scan/repeat and graphic equalizer • air conditioning • complete analog instrumentation with 120 mph speedometer and turbo pressure gage • floor shifter with console and two cup holders • fully carpeted interior with carpet floor mats • all windows tinted (except rear). So complete, in fact, and top-of-the-line is Syclone's standard equipment that the only upgrade option available is a CD player. Syclone is available in Midnight Black, Aspen Blue Metallic, Bright Teal, Apple Red and Frost White paint. Ask your GMC Truck dealer for details.

◀ Compact disc player with Premier Speaker System (U1C).

◀ Electric shift transfer case (NP1).

◀ Upper body stripe (D98).

◀ Sliding rear window (A28).

◀ 4.3L High Performance (HP) V6, with central port electronic fuel injection, available with automatic transmission only (L35).

▶ S-Standard
A-Available
1-Except X81 Special model.
2-Part of ZY3 Special Two-Tone Paint.
3-With ZY3 Special Two-Tone Paint only.
4-Includes swing-out quarter windows.
5-D96 Body Beltline Striping available.
6-P06 Wheel Trim Rings (bright) available.
7-Part of ZM7 Driver Convenience Package.
8-Standard on 4x4 models

ORDER WORKSHEET

To help you determine which Sonoma model is right for you, equipped the way you want it, fill in the information listed on the form below from the Technical Information Chart and other data listed in this brochure. Then present the completed worksheet to your GMC Truck dealer to help you locate your new Sonoma. Your dealer salespeople will be happy to answer any questions you may have about any of the charts or data.

DRIVE TYPE: _____ 2-Wheel Drive _____ 4-Wheel Drive
 BODY TYPE: _____ Regular _____ Club Coupe
 MODEL NUMBER: _____
 ENGINE: _____
 TRANSMISSION: _____ Automatic _____ Manual
 TRIM LEVEL: _____ SL _____ SLS _____ SLE
 EZ-SPEC GROUP: _____
 TIRES: _____

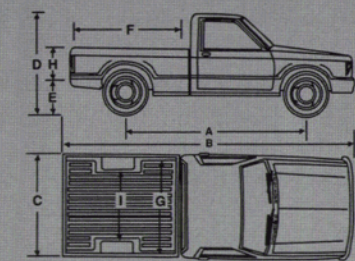
SELECTED AVAILABLE EQUIPMENT:

This is a partial list — See your dealer for details.

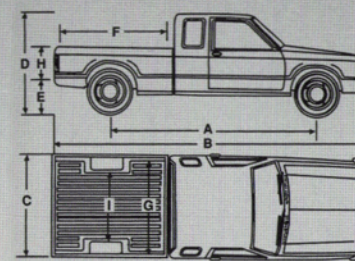
- Air Conditioning
- Power Windows/Door Locks
- Electronic Instrumentation
- Air Deflector & Fog Lamps
- Upper Body Striping
- Heavy-Duty Trailering Equipment
- Floor-Mounted Console, w/Cupholder
- Cold Climate Package
- Deep Tinted Glass
- Tiltwheel™ Steering Wheel w/Intermittent Wipers
- Sliding Rear Window
- Wheel Equipment
- Fold-down Jump Seats
- CD Player
- Sport Suspension Package
- Electronic Shift Transfer Case

DIMENSIONAL DATA

SONOMA



REGULAR CAB PICKUP		
Drive Type	2WD*	4WD*
A-Wheelbase	108.3/117.9	108.3/117.9
B-Overall length**	178.2/194.2	178.2/194.2
C-Overall width	64.7	64.7
D-Overall height	61.3	63.4
E-Loading height	28.3/28.1	29.6/29.5
F-Cargo box length	73.1/89.0	73.1/89.0
G-Cargo box width @ flr.	59.1	59.1
H-Cargo box depth	15.9	15.9
I-Width between wheelhousings	40.3	40.3



CLUB COUPE PICKUP		
Drive Type	2WD*	4WD*
A-Wheelbase	122.9	122.9
B-Overall length**	192.8	192.8
C-Overall width	64.7	64.7
D-Overall height	61.3	63.4
E-Loading height	28.0	29.3
F-Cargo box length	73.1	73.1
G-Cargo box width @ flr.	59.1	59.1
H-Cargo box depth	15.9	15.9
I-Width between wheelhousings	40.3	40.3

*All dimensions are inches.
 **Does not include optional rear bumper.

ENGINE TECHNICAL DATA

TYPE	Gasoline				
	2.5 (151)*	2.8 (173)***	4.3 (262)**	4.3 (262)HP***	Turbocharged/Intercooled 4.3 (262)
Displacement, liter (cu in)	2.5 (151)*	2.8 (173)***	4.3 (262)**	4.3 (262)HP***	Turbocharged/Intercooled 4.3 (262)
Configuration	L4	V6	V6	V6	V6
Ordering code	L38	LL2	LB4	L35	LB4/ZR9
Bore and stroke, inches	4.0 x 3.0	3.5 x 2.99	4.0 x 3.48	4.0 x 3.48	4.0 x 3.48
Compression ratio	8.3 to 1	8.9 to 1	9.1 to 1	9.1 to 1	8.35:1
Fuel delivery	EFI	EFI	EFI	CPEFI	PEFI
SAE net horsepower @ rpm	105 @ 4800	125 @ 4800	160 @ 4000 (above ratings are estimated)	195 @ 4500 (above ratings are estimated)	280 @ 4400
SAE net torque (lb/ft) @ rpm	135 @ 3200	150 @ 2400	230 @ 2800 (above ratings are estimated)	260 @ 3600 (above ratings are estimated)	360 @ 3600

*Standard 2-wheel drive. **Standard 4-wheel drive. ***Tentatively available October, 1991; see dealer for details.

GROSS COMBINATION WEIGHT RATING (GCWR)¹

Engine	GCWR (lb) by Engine and Axle Ratio						
	4500	5000	5500	6000	6500	7500	8500 9500
Axle Ratio With Automatic Transmission							
2.5L Tech IV				3.73	4.11		
4.3L Vortec V6						3.08 ²	3.42 ²
4.3L HP V6						3.08 ²	3.42 ²
Axle Ratio With Manual Transmission							
2.5L Tech IV			3.73	4.11			
2.8L V6	3.42	3.73					
4.3L Vortec V6					2.73 ³	3.08 ³	3.42 ³

1-Includes tow vehicle, trailer, passengers, cargo and equipment on tow vehicle and trailer. 2-Above GCWR reduced by 1000 lbs if tow vehicle is equipped with available P235/75R15 tires.
 3-Above GCWR reduced by 500 lbs if tow vehicle is equipped with available P235/75R15 tires.

TECHNICAL INFORMATION

DRIVE TYPE	2-Wheel	4-Wheel	All-Wheel
GVW RATING, lb.	4200	4600	4900 ⁴
MAXIMUM PAYLOAD, lb.	1563	1875	1902
ENGINE/TRANSMISSION AVAILABILITY	(consult your GMC Truck dealer for available axle ratios)		
2.5L L4/5-speed manual overdrive	standard	standard	—
2.5L L4/4-speed automatic overdrive	available	available	—
2.8L V6/5-speed manual overdrive	available	available	—
4.3L V6/5-speed manual overdrive	available ¹	available ²	standard
4.3L V6/4-speed automatic overdrive	available ¹	available ²	available
4.3L HP V6/4-speed automatic overdrive	available ¹	available ²	available
4.3L Turbocharged/Intercooled V6/4-speed automatic overdrive	—	—	standard
FRONT SUSPENSION	independent; coil springs ³		independent; torsion bars
Capacity, lb. (FGAWR)	2500	2500	2400
Spring/torsion bar capacity at grd (ea), lb.	1250	1250	1200
Shock absorber diameter, inches	standard: .98; available: 1.26		1.81 (gas)
Stabilizer bar diameter, inches	.98	.98	1.10
REAR SUSPENSION	semi-floating axle; semi-elliptical, 2-stage multi-leaf		
Axle capacity, lb. (RGAWR)	2300	2700	2000
Spring capacity at grd (ea), lb.	1150	1350	813
Shock absorber diameter, inches	standard: .98; available: 1.26		1.81 (gas)
BRAKES	hydraulic; front disc/rear drum with rear wheel anti-lock system ⁹		vented disc/rear drum
Vacuum booster	standard		
Parking	cable to rear wheels		
STEERING	recirculating ball gear; parallelogram linkage		variable ratio (16/13:1)
Standard	manual ⁷	manual ⁸	power
Available	power ⁸	power ⁸	—
TIRES	steel-belted; radial-ply; blackwall; front, rear and spare		4 tubeless, all-season steel-belted radial
Standard (All Season type)	P195/75R-14	P205/75R-14	P205/75R-15
Available	various (consult your GMC Truck dealer)		none
FUEL TANK CAPACITY, (gallons)	20		
FREEDOM BATTERY CCA	standard: 525; available: 630		630
ALTERNATOR AMPS	100		

CCA-Cold Cranking Amps
 1-Except X81 Special model. 2-Except Model TS10803. 3-ZQ8 Sport Suspension available; requirements and inclusions not listed below; see your dealer for details. 4-ZM6 Suspension Package available; requirements and inclusions not listed below; see your dealer for details. 5-Except 4x2 Club Coupes. 6-Standard on 4x2 Club Coupes. Required with 4.3L and 2.8L engines on other models. 7-Tire chains should not be used with available P235/75R-15 on-off road tires as they may cause damage to the vehicle. 8-13-gallon tank standard on X81 2WD. *Special model* (20-gallon tank available as part of X97 Option Package). 9-Model TS10803 only. 10-Operates in 2-WD only.

FINANCING

Your GMC Truck dealer can make it easy for you to buy or lease your new GMC Truck vehicle through GMAC. With GMAC the entire transaction can be handled right in the showroom. While buying gives you the traditional advantages of ownership, leasing offers other advantages. With GMAC leasing you can drive up to 15,000 miles a year without penalty. At the end of the lease, you have the option of purchasing your vehicle at an amount determined at the inception of the lease.

FINANCING

IMPORTANT: A WORD ABOUT THIS CATALOG

We have tried to make this catalog as comprehensive and factual as possible. We reserve the right, however, to make changes at any time, without notice, in prices, colors, materials, equipment, specifications, models and availability. Also, tires shown in illustrations are supplied by various manufacturers. Since some information may have changed since the time of printing, please check with your GMC Truck dealer for complete details.

A WORD ABOUT ENGINES.

GMC Truck models are equipped with engines produced by different operating units of GM, its subsidiaries or suppliers to GM worldwide.

A WORD ABOUT ASSEMBLY OF GMC TRUCK MODELS.

GMC Truck models are assembled by different operating units of General Motors, its subsidiaries or suppliers to GM worldwide. GMC Truck models incorporate thousands of components produced by different operating units of GM, its subsidiaries or suppliers to GM worldwide. We sometimes find it necessary to produce GMC Truck models with different or differently sourced components than originally

scheduled. All such components have been approved for use in GMC Truck models and will provide the quality performance associated with the GMC Truck name. Since some options may be unavailable when your vehicle is assembled, we suggest you verify that your vehicle includes the equipment you ordered or, if there are changes, that they are acceptable to you.

A WORD ABOUT UPDATED SERVICE INFORMATION.

GMC Truck Division regularly sends its dealers useful service bulletins about GMC Truck products. GMC Truck Division monitors product performance in the field. We then prepare bulletins for servicing our products better. Now you can get these bulletins, too. Ask your dealer. To get ordering information, call toll free 1-800-551-4123.

A WORD ABOUT CORROSION PROTECTION

GMC Truck models are designed and built to resist corrosion. All body sheet metal components are warranted against rust-through corrosion for 6-years/100,000 miles. See your dealer for terms and conditions of the limited warranty. Application of additional rust inhibiting materials is not required under the corrosion coverage.

OWNER BENEFITS

Because it's from GMC Truck, your new Sonoma comes with many significant benefits, among them: the security of a rear-wheel anti-lock braking* system, the strength of double walls of steel in the hood, fenders, doors, and cargo box. In addition, from its comprehensive Bumper to Bumper Plus warranty to its long list of standard safety features, your new Sonoma is also one of the best protected trucks in our history. We invite you to read about these important benefits.

1 992 GMC TRUCK SAFETY FEATURES

OCCUPANT PROTECTION:

Manual lap/shoulder safety belts, outboard front and rear seat positions Manual lap safety belts, center front/rear seat positions, where applicable Energy absorbing steering column Energy absorbing instrument panel Energy

absorbing seat back tops, front (Club Coupes) Interlocking door latches Safety armrests Inertia-locking, folding front seat backs Break-away day/night inside rearview mirror Security door locks and door retention components Laminated windshield glass Tempered safety glass side and rear windows.

ACCIDENT AVOIDANCE:

Side marker lamps and reflectors Parking lamps that illuminate with headlamps Four-way hazard warning flashers Back-up lamps Directional signal control with lane change feature Windshield washer, defroster and multi-speed wipers Outside left and right rearview mirrors Brake system with dual master cylinder and warning light Starter safety switch Dual action hood latch Low glare finish on inside windshield moldings, wiper arms and blades, metallic

steering wheel surfaces Dual sun visors Illuminated heater and defroster controls Tires with built-in tread wear indicators Audible brake lining wear indicators w/disc brakes Rear-wheel anti-lock brake system* (4-wheel ABS on Syclone) Safety road wheel rims Pressure relief fuel cap.

1 992 GMC TRUCK WARRANTY



Your new Sonoma is protected by one of the most comprehensive warranties in the industry: GM's Bumper to Bumper Plus. The entire vehicle (except tires, which are covered by their manufacturer) is warranted for repairs, including parts and labor, to correct defects in materials or workmanship for 3 years or 36,000 miles. This warranty is transferable and covers towing to the nearest GM dealer should towing be

necessary. In addition, any body sheet metal rust-through is covered for 6 years or 100,000 miles. There is no deductible during the warranty period for warranty repairs. See your GMC Truck dealer for terms of this limited warranty.

L OW MAINTENANCE

Another benefit of your new Sonoma is its low required maintenance. Traditional engine tune-ups, for example, are virtually eliminated. Depending on your type of driving, oil changes are recommended only every 6 months or 7,500 miles. Be sure to read the owner's manual for the complete maintenance schedule for your vehicle and type of driving you do.

Finally, the benefits of your new GMC Sonoma extend beyond the truck itself. See the back cover of this catalog for highlights of GMC Truck's Commitment Plus and new Roadside Assistance Program.

*Operates in 2WD only.

COMMITMENT PLUS:

A CUSTOMER SATISFACTION PROGRAM AS DISTINCTIVE AS THE SONOMA ITSELF.

Our goal is to make your new Sonoma the most rewarding truck you've ever owned. We want you to be satisfied with the service, care and consideration of your GMC Truck dealer. To that end, we and the more than 2400 GMC Truck dealers have developed Commitment Plus. Among its benefits to you:

- Roadside assistance — available to you 24 hours a day. Dialing a 1 (800) number gives you access to emergency services such as towing, tire change assistance, locksmith services, and more for as long as you own your Sonoma.
- Keeping in touch with you throughout your ownership, with one thought in mind — complete customer satisfaction.
- Complimentary 3000-mile inspection and maintenance service, including oil and oil filter change.
- A complimentary full tank of fuel upon delivery.
- See your GMC Truck dealer for full details on this important additional benefit of GMC Truck ownership. Applies to retail sales only.

GMC is a registered trademark and GMC Truck is a trademark of General Motors Corp. ©1991 GM Corp. All rights Reserved.

GM® GMAC® Sonoma® Vortec® Insta-Trac® and Delco® are registered trademarks of General Motors Corporation.

GMC Truck™ and Commitment Plus/GMC Truck Logo™ are trademarks of General Motors Corporation.

5002-92

Litho in USA

