



2-Door shown in Black Sand Pearl with available Upgrade Package #1 and 15" steel wheels with full wheel covers



4-Door shown in Silver Streak Mica with available 15" steel wheels with full wheel covers and dual remote outside mirrors

05 MODEL GRADES

Available options: grad school, travel, expanding your karaoke repertoire. The affordable 2005 ECHO is all about choices. Simple choices, like whether you want two doors or four, and which of the nine colors you like. And big choices, like what to do with all the rest of your money. But take your time with those big decisions. Go out for a drive and think things over as you enjoy the spirited 1.5-liter VVT-i engine, spacious cabin and the peace of mind that comes with a Toyota. The ECHO. It gets you there.



4-Door interior shown in Dark Gray with available Chrome Interior Accent Package and Upgrade Packages #1, #2 and #3



Interior shown in Dark Gray with available Chrome Interior Accent Package and Upgrade Packages #1, #2 and #3



Dual glove compartments.

05 INTERIORS

Fits four of your friends. And your budget. You've got friends, so the 5-passenger ECHO has a spacious interior with remarkable headroom. You've got lots of stuff, so the ECHO has dual glove compartments, an under-seat storage tray and an available 60/40 split fold-down rear seat with armrest. And you've got a taste for cool stuff, so the ECHO's got a unique center-mounted instrument panel, available 3-in-1 AM/FM Cassette/CD audio system, an available tachometer and chrome-accented interior enhancements. What you might not have is a bottomless bank account. Not to worry: the ECHO's got you covered.

MODEL GRADE FEATURES
Exterior

Color-keyed front and rear bumpers and door handles	S	Dual black outside mirrors	S
Chrome front grille	S	Gray sport fender and rocker panel extensions	0
Aerodynamic multi-reflector halogen headlamps	S	Color-keyed sport fender and rocker panel extensions ¹	0
Tinted glass	S	Fog lamps	0
Fabric-trimmed 4-way adjustable front seats with adjustable headrests and passenger-seat under-seat storage tray	S	Dual remote outside mirrors	0
14" steel wheels with full wheel covers and P175/65R14 tires	S	15" steel wheels with full wheel covers and P185/60R15 tires	0
Windshield wipers with mist feature	S	Color-keyed rear spoiler ¹	0

Interior

AM/FM radio with four speakers	S	Tachometer	0
Tilt steering wheel	S	CFC-free air conditioning	0
Fabric-trimmed rear seat with adjustable headrests	S	Digital quartz clock	0
Center instrument cluster with speedometer, fuel gauge, digital LCD odometer with twin tripmeters and warning lights	S	Power door locks	0
Center console storage compartments	S	Remote keyless entry system ²	0
Dual glove compartments	S	60/40 split fold-down rear seat	0
Dual front and rear cup holders	S	AM/FM single-disc in-dash CD player with six speakers	0
Dual sun visors with driver's vanity mirror	S	3-in-1 AM/FM Cassette/single-disc in-dash CD player with six speakers	0
Rear window defogger	0	Cargo tote	0
Power steering	0		

Safety and Convenience

Driver and front passenger airbags ³	S	3-point rear seatbelts in all positions with Automatic/Emergency Locking Retractors (ALR/ELR)	S
Driver and front passenger seat-mounted side airbags ³	0	Front seatbelt pretensioners with force limiters	S
Anti-lock Brake System (ABS) ⁴ — includes Daytime Running Lights (DRL) ⁴	0	Energy-absorbing upper interior trim	S
Hood hold-down hooks	S	Child-protector rear door locks	S
Front and rear energy-absorbing crumple zones	S	Center high-mount stop lamp (CHMSL)	S
Side-impact door beams	S		
Energy-absorbing steering column	S		
3-point front seatbelts with adjustable shoulder anchors, driver's Emergency Locking Retractor (ELR) and passenger-side Automatic/Emergency Locking Retractor (ALR/ELR)	S		

S = Standard 0 = Optional

AVAILABLE PACKAGES AND OPTIONS
Packages

Upgrade Package #1 — includes gray sport fender and rocker panel extensions, dual remote outside mirrors, intermittent windshield wipers, power steering, tachometer, digital quartz clock and 60/40 split fold-down rear seat

Upgrade Package #2⁵ — includes 3-in-1 AM/FM Cassette/single-disc in-dash CD player with six speakers and CFC-free air conditioning

Upgrade Package #3⁶ — includes power windows and power door locks

Appearance Package¹ — includes color-keyed sport fender and rocker panel extensions, intermittent windshield wipers, power steering, tachometer and digital quartz clock

Chrome Interior Accent Package — chrome-accented interior door handles, heater control dials, shift lever and parking brake knob

All-Weather Guard Package — includes heavy-duty battery and rear defogger, and rear-seat heater ducts

1 Available only on 4-Door in Phantom Gray Pearl, Silver Streak Mica, Impulse Red Pearl or Indigo Ink Pearl.

2 Requires power door locks or Upgrade Package #3.

3 The Toyota driver, front passenger and front seat-mounted side airbags are Supplemental Restraint Systems (SRS). The driver and front passenger airbags are designed to deploy in severe (usually frontal) collisions where the magnitude and duration of the forward deceleration of the vehicle exceed the design threshold level. The side airbags are designed to inflate in certain types of severe side-impact collisions. In all other accidents, the airbags will not inflate. To decrease the risk of injury from a deploying airbag, always wear seatbelts, sit upright in the middle of the seat as far back as possible from the airbag modules and do not lean against the door. Do not put objects in front of an airbag or around the seatback. Do not use rearward-facing child seats in any front passenger seat. The force of a deploying SRS airbag may cause serious injury or death. Please see your *Owner's Manual* for further instructions.

4 Requires All-Weather Guard Package.

5 2-Door requires Upgrade Packages #1, gray sport fender and rocker panel extensions or radiator cover. 4-Door requires Upgrade Package #1, gray or color-keyed sport fender and rocker panel extensions, radiator cover or Appearance Package.

6 4-Door requires Upgrade Packages #1 and #2, or Appearance Package and Upgrade Package #2.

SPECIFICATIONS
Mechanical/Performance

Engine	Double overhead cam (DOHC) 16-valve VVT-i 4-cylinder
Displacement	1.5 liters (1,496 cc)
Bore x stroke	75 mm x 84.7 mm
Compression ratio	10.5:1
Valvetrain	Double overhead cam (DOHC) 16-valve with Variable Valve Timing with intelligence (VVT-i)
Induction system	Multi-point electronic fuel injection (EFI)
Ignition system	Electronic, with Toyota Direct Ignition (TDI)
Horsepower	108 hp @ 6,000 rpm
Torque	105 lb.-ft. @ 4,200 rpm

Transmission

5-speed manual overdrive	Standard
4-speed electronically controlled transmission (ECT)	Available
Suspension	
Front	Independent MacPherson strut with stabilizer bar
Rear	Torsion beam
Steering	Rack-and-pinion with available power-assist
Turning circle	32.8 ft.
Brakes	Power-assisted ventilated front disc/rear drum Available Anti-lock Brake System (ABS) ¹ — includes Daytime Running Lights (DRL)

Exterior Dimensions (in.)

Overall height	59.4
Overall width	65.4
Overall length	164.8
Wheelbase	93.3
Track (front/rear)	56.9/55.9
Ground clearance	4.7

Interior Dimensions front/rear (in.)

Head room	39.9/37.6
Shoulder room	
2-Door	52.2/51.0
4-Door	51.9/50.7
Hip room	51.1/51.0
Leg room	41.1/35.2
Seating capacity	5

Weights and Capacities

Curb weight, manual/automatic (lbs.)	
2-Door	2,035/2,085
4-Door	2,055/2,105
Passenger volume (cu. ft.)	
2-Door	88.0
4-Door	87.4
Cargo volume (cu. ft.)	13.6
Fuel tank (gal.)	11.9

Tires

Standard	P175/65R14 All-Season tires on steel wheels with full 14" wheel covers
Available	P185/60R15 All-Season tires on steel wheels with full 15" wheel covers
Spare	Temporary

Mileage Estimates (mpg city/highway)²

Manual	35/42
Automatic	33/39

¹ Requires All-Weather Guard Package.

² 2005 preliminary mileage estimates determined by Toyota. EPA mileage estimates not available at time of posting. Actual mileage may vary.

COMBINATIONS


ECHO MSRP Starting At¹:
2-Door \$10,455 (as shown above \$11,640)



Standard 14-in. wheel cover
Available 15-in. wheel cover



4-Door \$10,985 (as shown above \$12,205)



Standard 14-in. wheel cover
Available 15-in. wheel cover

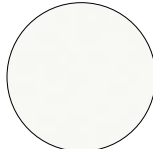
1. 2005 Manufacturer's Suggested Retail Price, excludes the Delivery, Processing and Handling Fee of \$540 for Cars and \$565 for Trucks, Vans and SUVs. (Historically, vehicle manufacturers and distributors have charged a separate fee for processing, handling and delivering vehicles to dealerships. Toyota's charge for these services is called the "Delivery, Processing and Handling Fee" and is based on the value of the processing, handling and delivery services Toyota provides as well as Toyota's overall pricing structure. Toyota may make a profit on the Delivery, Processing and Handling Fee.) Excludes taxes, license, title and available or regionally required equipment. The Delivery, Processing and Handling Fee in AL, FL, GA, NC and SC is \$35 higher for Trucks, Sienna and SUVs, and \$50 higher for all other Toyota vehicles. The Delivery, Processing and Handling Fee in AR, LA, MS, OK and TX is \$35 higher for all Toyota vehicles. Actual dealer price may vary. Pricing, specifications, standard features and available equipment are based on information available when this page was produced and are subject to change without notice.

FABRIC
COLOR

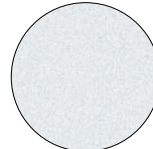

Beige fabric



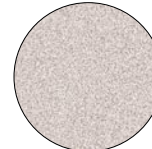
Dark Gray fabric



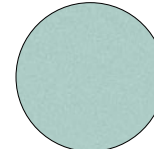
Polar White² with Dark Gray
or Beige interior



Silver Streak Mica with
Dark Gray interior



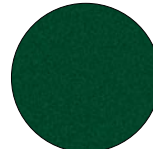
Sand Castle Metallic² with
Beige interior



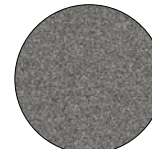
Aqua Ice Opalescent² with
Dark Gray interior



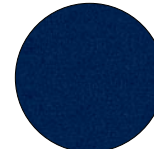
Impulse Red Pearl with
Dark Gray or Beige interior



Electric Green Mica^{2,3} with
Dark Gray or Beige interior



Phantom Gray Pearl with
Dark Gray or Beige interior



Indigo Ink Pearl with Dark
Gray interior



Black Sand Pearl² with Dark Gray
or Beige interior

2 Not available with Appearance Package or color-keyed sport fender and rocker panel extensions.

3 Not available after July 2005.

WARRANTIES

Every Toyota Car, Truck and SUV is built to exceptional standards. And that's not idle boasting. We back it up with these Limited Warranty Coverages:

Basic: 36 months/36,000 miles (all components other than normal wear and maintenance items).

Powertrain: 60 months/60,000 miles (engine, transmission/transaxle, front-wheel drive, rear-wheel drive, seatbelts and airbags).

Rust-Through: 60 months/unlimited miles (corrosion perforation of sheet metal).

Emissions: Coverages vary under Federal and California regulations. Refer to applicable *Owner's Warranty Information* booklet for details.

Accessories: For accessories purchased at the time of the new vehicle purchase, the Toyota Accessory Warranty coverage is in effect for 36 months/36,000 miles from the vehicle's in-service date, which is the same coverage as the Toyota New Vehicle Limited Warranty.

For accessories purchased after the new vehicle purchase the coverage is 12 months, regardless of mileage, from the date the accessory was installed on the vehicle, or the remainder of any applicable new vehicle warranty, whichever provides greater coverage, with the exception of car covers. Car covers are warranted for 12 months from the date of purchase and do not assume any coverage under the Toyota New Vehicle Limited Warranty.

You may be eligible for transportation assistance if it's necessary that your vehicle be kept overnight for repairs covered under warranty. Please see your authorized Toyota dealership for further details.

For complete details about Toyota's warranties, please visit www.toyota.com, refer to the applicable *Owner's Warranty Information* booklet or see your Toyota dealer.

TOYOTA FINANCIAL SERVICES*

Now that you're thinking about a Toyota, you may also want to consider leasing or purchasing your new vehicle through your participating dealer and Toyota Financial Services (TFS). TFS offers a variety of high-quality finance and lease products to complement your lifestyle. If you are about to graduate from college or are a recent college graduate, you may qualify for special benefits through our College Graduate Finance Program.

Some vehicles are shown with available equipment. Seatbelts should be worn at all times. For details on vehicle specifications, standard features and available equipment in your area, contact your Toyota dealer. A vehicle with particular equipment may not be available at the dealership. Ask your Toyota dealer to help locate a specifically equipped vehicle.



For Toyota Mobility program details, go to www.toyota.com/mobility or call the Toyota Customer Assistance Center at 1-800-331-4331.

Few companies can match the expertise, customer care and total value of TFS. Ask your Toyota dealer or go to www.toyotafinancial.com for details.

*Toyota Financial Services is a service mark of Toyota Motor Credit Corporation and Toyota Motor Insurance Services, Inc. Products are available to qualified customers through your participating Toyota dealer and Toyota Financial Services.

All information presented herein is based on data available at the time of posting, is subject to change without notice and pertains specifically to mainland U.S.A. vehicles only (may differ in the state of Hawaii, Puerto Rico, the U.S. Virgin Islands and in other regions).

1-800-60-TOYOTA
toyota.com

©2004 Toyota Motor Sales, U.S.A., Inc.
KZ5-024



05 ACCESSORIES

- A Cargo Tote by Nifty Products**
This handy Cargo Tote helps keep your trunk organized.
- B Cargo Net**
Don't you hate it when your stuff rolls around while you're driving? The Cargo Net is your answer. It's easy to install and even easier to use.

C Roof Rack and Attachments
Maximize your roof rack's usefulness with Genuine Toyota Attachments. The Ski/Snowboard Attachment holds up to four pairs of skis or two snowboards. It's easy to attach and comes with an integrated locking mechanism for extra security.

D 14" Alloy Wheels
Add some flair to your vehicle with sporty and stylish Alloy Wheels. Manufactured to meet Toyota's strict engineering specifications.

E Bicycle Rack Attachment by Yakima®
This sleek Bike Attachment by Yakima® allows you to take your bike with you and easily mounts to your roof rack. Includes an integrated locking mechanism to help keep your bike safe and secure.



05 ACCESSORIES

F Vehicle Intrusion Protection (VIP) RS3200 Security System
This advanced, multi-featured security system helps protect against theft. Your insurance deductible may be reimbursed if your vehicle is stolen.
Specific terms and conditions apply. Please consult VIP Consumer Limited Warranty Card or call TMS Commercial Insurance at 888-238-8125.

G Premium License Plate Frames by Grenada
Accessorize your vehicle with a high-quality license frame. Available in 24kt gold, chrome, and black pearl finishes.

H Emergency Assistance Kit
Drive with confidence in knowing that you are secure with your Emergency Assistance Kit. This basic emergency assistance kit contains jumper cables, multi-tool, flashlight, emergency blanket, duct tape, bungee cord, survival whistles, hose clamp and more...

I Carpeted Floor Mats
Color-coordinated floor mats protect your original carpeting while adding some flair with an embroidered ECHO logo. The non-skid backing and positive retention clip help prevent them from sliding.

J All-Weather Floor Mats
Made with heavy-gauge rubber, these floor mats are easy to rinse clean and provide the ultimate protection for your original carpet. All-Weather Floor Mats handle all types of weather.

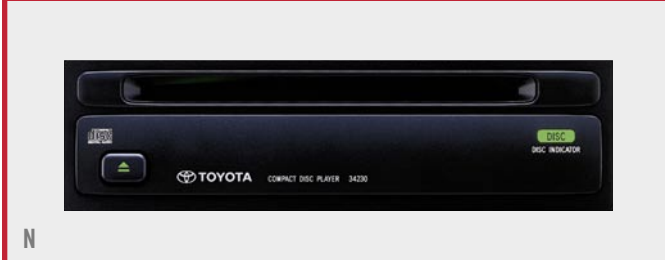
K Subwoofer
Enhance your existing audio with the rich bass sound of a compact Subwoofer. Features 80-watt amplifier and convenient under-seat installation.



L



M



N



O



P



Q

05 ACCESSORIES

- L First Aid Kit**
This handy First Aid Kit puts supplies where they are needed, when they are needed. The kit contains sterile medical dressings, anti-bacterial ointment and an assortment of other supplies.
- M Wheel Locks**
Wheels can make the vehicle. Keep your wheels where you need them — on your car. Available for alloy wheels.
- N Compact Disc Deck**
The kids want you to turn up the radio — well now you can with an audio upgrade! Upgrade your vehicle's current audio system with a Genuine Toyota CD Deck.

- O 6-Disc In-Dash CD Changer**
This revolutionary CD Changer allows you to enjoy selections from up to 6 of your favorite CDs without messing up a magazine. It's all in the dash! The 6-Disc In-Dash CD Changer combines the convenience and function of a CD deck with the flexibility of a multi-disc CD changer.
- P Sport Pedals by OBX Racing Sports®**
Replace your drab stock pedals with a set of Sport Pedals by OBX Racing. Available in sleek silver finish for automatic and manual transmission.
- Q Shift Knobs by OBX Racing Sports®**
Black knobs not your style? Get tech with these carbon fiber-sleeved sport Shift Knobs by OBX Racing. Available in Chrome, Titanium, Red and Blue. Manual transmission only.

- Accessories not shown:**
- Auto-Reverse Cassette Deck
 - Front-End Mask
- Warranty Statements:**
- Accessories installed at the time of the new vehicle purchase are covered for 36 months/36,000 miles from the vehicle's in-service date, whichever occurs first, under the New Vehicle Limited Warranty.
 - Accessories installed by the dealer after the new vehicle purchase are covered for 12 months, regardless of mileage, from the accessory installation date, or the remainder of the New Vehicle Limited Warranty, whichever provides greater coverage.
 - Accessories purchased over the counter are covered for 12 months from the date of purchase.
 - Car covers are warranted for 12 months from the purchase date and are not covered by the New Vehicle Limited Warranty.