

1998 Malibu



CHEVROLET
TRIED
TESTED
& TRUE

MALIBU



It's the little things that keep Malibu a step ahead of the rest. Like an engine that, under normal conditions, only requires its first scheduled tune up at 160,000 km, so Malibu spends less time in the shop and more on the road. Air conditioning vents mounted high on the instrument panel, for more efficient air flow and more comfort in the cabin. A cupholder positioned to the left of the steering column, just for you. Or an ignition switch mounted where you can see it clearly and reach it easily. Details count. And Malibu manages the details like no other car.



CHEVROLET

**TRIED
TESTED
& TRUE**



It's just what you're looking for. If you're looking for a great mid-size sedan, Malibu has your wish list covered. You need interior room? Malibu's passenger compartment isn't just spacious, it's also thoughtfully designed and comprehensively equipped. You want a car that's a pleasure to drive? Malibu puts responsive performance in your hands, with a 150-horsepower Twin Cam engine, an advanced electronically-controlled 4-speed automatic transmission and 4-wheel independent suspension. You're looking for a quality car that's built to last? Malibu features a whole range of long-life features, from corrosion-resistant 2-sided galvanized steel exterior body panels to platinum-tipped spark plugs. You demand excellence? Malibu delivers.



Large, international-style tri-colour taillamps make an important contribution to your safety by making Malibu more visible to drivers following behind.



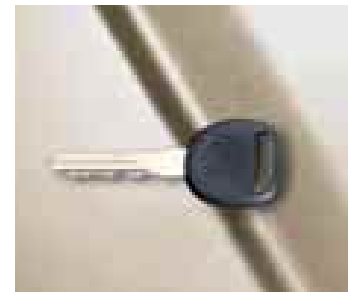
With double overhead camshafts, 4 valves per cylinder and an integral balance shaft, Malibu's standard 2.4-litre Twin Cam engine provides smooth, quiet performance.



The standard electronically-controlled 4-speed automatic transmission includes a 2nd-gear start feature, to help you get going when traction is in short supply.



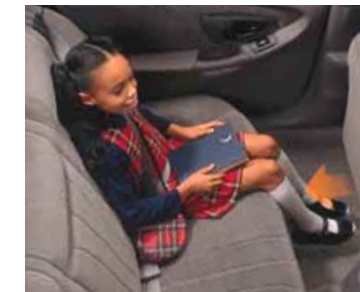
Big — and big on details. Malibu combines moderate exterior size with a remarkably roomy interior designed to keep you comfortable, even on those long trips with the family. Malibu also includes much more in the way of amenities than you may expect in this class, with air conditioning, an excellent AM/FM stereo with a cassette tape player and many more features all standard equipment. But over the long run, it may be Malibu's intelligent design that makes the biggest impact. Time and time again, you'll have the feeling that Malibu's designers knew exactly what you needed — even before you knew it yourself.



The standard PASSLock™ theft-deterrent system is designed to keep Malibu's engine from starting unless the right key is used in the ignition.



People come in all shapes and sizes, so Malibu's front shoulder belts feature height adjusters to help everyone ride more comfortably.



Heat ducts that flow warm air under the front seats help to keep your rear passengers comfortable on those cold winter days.



Malibu's standard rear cupholders are designed to hold cups, cans — even juice boxes. They're just one example of this car's remarkable attention to detail.



Luxury within your reach. The way Malibu LS looks, with its standard cast-aluminum wheels and fog lamps, some of your friends may get the idea it's a premium luxury sedan. If so, they won't be entirely wrong. Malibu LS comes standard with a whole array of desirable luxury-class features. The smooth, strong 3100 V6, equipped with Sequential-Port Fuel Injection, responds instantly at any speed. The outside rearview mirrors are power-operated for convenient adjustment. There's also a remote keyless entry system that lets you unlock your doors at the touch of a button, making it easier to get into Malibu LS's very well-equipped interior.



Malibu LS's standard remote keyless entry system locks or unlocks the doors or opens the trunk from up to 6 metres (20 feet) away, for added security and convenience.



Available power glass sunroof lets you enjoy the sun and fresh air and features a design that helps preserve head room inside the car.



Standard fog lamps on Malibu LS help you see better when the visibility is limited. They also contribute to an upscale appearance.



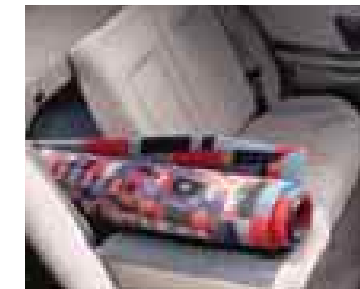
With up to 180 lb.-ft. of torque on tap, the smooth 3100 V6 responds to every input without hesitation.



We thought of everything. Inside Malibu LS there are premium features almost everywhere you look. The driver's seat, for instance, is equipped with 6-way power adjustments to help you find just the right driving position, and the available leather seating surfaces — shown above — add an undeniable upscale touch. There are power assists for the door locks and windows. A cargo convenience net helps keep your parcels in place in the trunk. Split-folding rear seatbacks add a measure of versatility when you're carrying bulky items. There are even special map lights mounted in the rearview mirror for added convenience during night driving.



Inside Malibu LS, the seats are covered in a special Custom cloth that has a distinctly luxurious look and feel.



Large or bulky items can be easily carried in the security of the Malibu LS interior thanks to standard split-folding rear seatbacks.

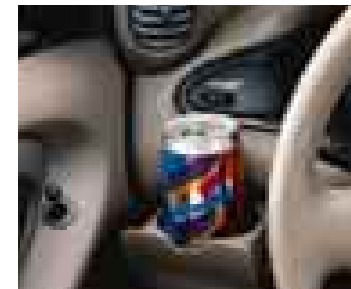


Malibu LS includes a full complement of power assists — including windows, door locks and outside rearview mirrors — all as standard equipment.

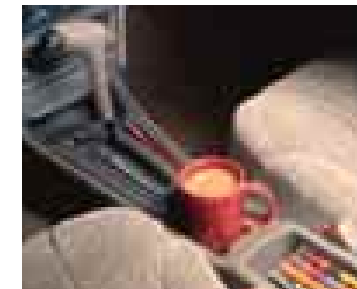


It just feels right. From the driver's vantage point, the logic of Malibu is unmistakable.

These are controls you can find in an instant without ever taking your eyes off the road. Just as important, they operate exactly as you expect them to, with a smooth, positive feel. The steering wheel tilts into place to help you stay comfortable and relaxed, even on long journeys. Switches for the headlamps, windshield wipers and available cruise control are all located where you want them, just centimetres from your fingertips. Another thoughtful Malibu feature is the transmission shifter, which has been located and designed to fit easily into your hand.



A convenient cupholder is positioned to the left of the steering wheel specifically for the driver. It slides into the instrument panel when not in use.



Malibu's thoughtfully designed floor console includes a cupholder, an armrest and a handy compartment for storing cassette tapes, CDs and other small items.



Rotary controls for the standard heating, ventilation and air conditioning system are designed to be easy to operate, even with winter gloves on.



Malibu offers you an excellent range of sound systems to choose from, including the available AM/FM stereo with CD player shown here.



More protection than you'll ever see. Every Chevrolet Malibu includes well over 100 features that make a significant contribution to your safety and the safety of your passengers.

Some — the features that help you to keep accidents from happening — you'll use so often you'll take them for granted. Malibu's large windshield, standard rear and side-window defoggers and bright halogen headlamps fit into this category. So do the standard 4-wheel anti-lock brakes, the Malibu-exclusive all-season radial tires and the responsive, predictable handling characteristics.

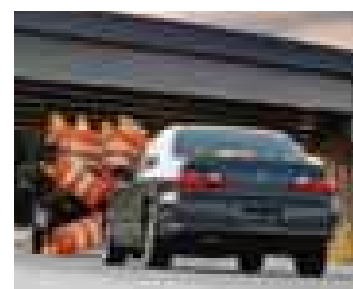
Malibu also includes a second category of safety features — ones we hope you'll never have to test. These are occupant protection items — like front and rear crush zones and the rigid steel safety cage that surrounds the passenger compartment — that work to eliminate or minimize injuries in the event of a crash. Other examples include laminated windshield glass, an energy-absorbing steering column and front and rear head restraints. The 1998 Malibu is also equipped with Next Generation dual front air bags*, that deploy with reduced force, and supplement the lap/shoulder safety belts for an added measure of protection.

Finally, Malibu includes security-oriented features such as the standard PASSLock™ ignition system. It helps keep your Malibu from being "hot-wired" by rendering it temporarily undriveable if a would-be thief tries to start the car without placing the appropriate key in the ignition.

*Remember, always wear your safety belt, even with air bags. Never place a rear-facing child seat in the front seat of a vehicle equipped with a passenger-side air bag.



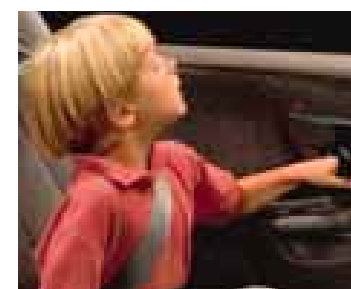
Malibu's very strong body structure includes a protective steel safety cage that surrounds the passenger compartment.



A standard 4-wheel anti-lock braking system helps you maintain steering control, even during emergency braking, on most slippery surfaces.



Cinching safety belts in Malibu's rear seat assist in the proper installation of child safety seats.



Parents of small children will appreciate Malibu's child-security rear door locks, which can be set so the doors can only be opened from the outside.



Crush zones at the front and rear are designed to absorb crash energy, in order to reduce the impact on the passenger compartment.



Special guides for Malibu's rear shoulder belts make for a better, more comfortable fit for children and smaller adults.



Malibu's Next Generation dual front air bags have been designed for 1998 to deploy with reduced force than previous air bags, for improved occupant protection.



Performance that just won't quit. It will be understandable if you find yourself 3, 4 or even more years from now still thinking of your 1998 Malibu as your "new" car. In an age when more and more things are considered disposable, Malibu is built to last.

The exterior body panels are a case in point. They're stamped exclusively from steel that's galvanized on both sides to prevent corrosion from getting a foothold. Under normal conditions they'll keep the Malibu body rust-free for many, many years to come.

Malibu's paint is designed to keep its brilliance for the long run, too. The base colour coat is covered with a durable clear-coat that adds a deep, wet-look shine and protects against the elements. The result is a quality finish that's been proven to last significantly longer than conventional paint treatments.

Malibu is also built to operate reliably with very little in the way of regular maintenance. Some of the services you might expect to have done every year are required much less frequently on Malibu, and other maintenance jobs have been eliminated completely. A major tune-up, for example, is only scheduled every 160,000 kilometres, and in normal service the automatic transmission fluid will never need replacing over the life of the car*.

* Maintenance needs vary with different uses and driving conditions. See Owner's Manual for more information.



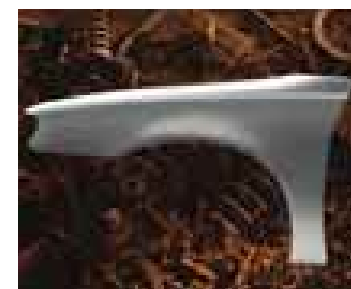
Thanks to electronic Sequential-Port Fuel Injection, platinum-tipped spark plugs and an electronic ignition, major tune-ups are scheduled to take place only every 160,000 km.



Malibu's standard and available engines are cooled by advanced DEX-Cool™ engine coolant that only needs changing every 5 years or 240,000 km, under normal conditions.



The standard electronically-controlled 4-speed automatic transmission is filled with Dexron® III transmission fluid, which never needs replacing, under normal conditions.



Under Malibu's quality paint finish, the exterior body panels are made of corrosion-resistant 2-sided galvanized steel.



Ignition timing never needs adjusting, thanks to the computer technology that controls virtually every function of Malibu's powertrains.



Malibu's all-season radial tires have been specially developed to deliver both long life and excellent ride and handling characteristics.

Reflector optic headlamps. On the highway at night, Malibu's large reflector optic headlamps with bright halogen bulbs assure an excellent view of the road ahead.

Aerodynamic design. An aerodynamic exterior body design contributes to a quiet ride and excellent highway fuel economy.

"Breakaway" mirrors. Malibu's outside rearview mirrors are designed to fold back on impact to help prevent damage in tight parking places.

Side-window defoggers. In damp or cold weather, special vents direct air flow over Malibu's side windows to help keep them clear of fog.

Roof rain gutters. Gutters designed into the roof helps prevent water from dripping into Malibu's interior when the doors are opened.

Soft-Ray tinted glass. Malibu's tinted windows add to your comfort in 2 important ways. They cut glare on bright days, and they reduce the load on the standard air conditioning system, so the interior cools more quickly in warm weather.



Large trunk. With a capacity of 464 litres (16.4 cubic feet) and a low lift-over height, Malibu's trunk accommodates virtually any cargo with ease.

"Zoned" rear window defogger. For better visibility, Malibu's rear defogger clears the crucial centre area of the window first before progressing to the outer edges.

Six-step paint process. To assure a long-lasting quality finish, Malibu's body panels are coated with phosphates, an anti-rust primer, a smooth-as-glass surfacer, an anti-chip primer, two colour coats and a final clear coat.

Automatic light control. In dim lighting conditions, your headlamps come up to full intensity and the other exterior lamps turn on automatically for greater visibility and safety.

Bodyside mouldings. Standard body-colour mouldings on Malibu's door panels provide protection against minor dings and dents in parking lots.

Scotchgard™ Fabric Protector. To help avoid stains and keep the interior looking new, all seat fabrics and carpets are treated with Scotchgard™.

Tethered gas cap. Malibu's fuel filler cap is tethered to the car, so it's impossible to leave it behind after a fill-up.

"Straked" antenna. A "straked" or wire-wrapped radio antenna creates less wind noise than a conventional one. It's just one of the measures that help keep Malibu's interior calm and quiet.

Audible brake wear indicators. Malibu's front disc brake pads are designed to alert the driver with a high-pitched squeal when they need replacing.

Block heater. On cold winter days, Malibu's standard engine block heater allows easier starting and faster warm-ups.

Hydraulic engine mounts. Malibu's engine is secured to the body structure by liquid-filled mounts. The result: a smoother, virtually vibration-free ride.

Computer-controlled fuel injection. Both Malibu engines feature Sequential-Port Fuel Injection systems which deliver the right amount of fuel to each cylinder at precisely the right time during the engine's cycle. Benefits include better performance and fuel efficiency and excellent driveability.

Independent suspension. Malibu's fully independent tri-link rear suspension has been specifically designed to help keep road noise from entering the passenger compartment.

Front and rear stabilizer bars. Stabilizer bars incorporated into the front and rear suspension systems contribute to Malibu's confident handling and controlled ride.

Aluminum front brake calipers. To help minimize unsprung weight and improve Malibu's ride and handling, the front brake calipers are fabricated from lightweight aluminum.



Wide front and rear track. Widely spaced front and rear wheels aid Malibu's handling and contribute to a roomy, comfortable interior.

Large fuel tank. A 58-litre (12.6 gallon) fuel tank and Malibu's excellent fuel economy combine to deliver excellent range between fill-ups.

Battery run-down protection. To help reduce the inconvenience of a dead battery, Malibu's courtesy, reading and map lights shut down automatically if they're left on for more than 20 minutes with the ignition in the 'Off' position.

Power rack-and-pinion steering. Rack-and-pinion steering — the same design used in almost all high-performance sports cars — provides excellent road feel. A power assist makes light work of parking and low-speed manoeuvres.

Altitude compensation. Engine output naturally drops off in the thinner air at higher altitudes. Malibu's transmission is designed to sense when this happens and compensate automatically, to give you more consistent performance.

Long wheelbase. A long 2718 mm (107.0 in.) wheelbase is one of the factors behind Malibu's smooth ride. It also allows more room in the passenger compartment.

Rigid body structure. Thanks to advanced computer design techniques, Malibu's body structure is remarkably strong. Benefits include more precise suspension tuning, less potential for squeaks and rattles in the interior and a reassuringly solid feel, even on rough pavement.

Foam baffles. A wide range of sound-deadening measures — including strategically placed foam baffles — helps reduce noise in Malibu's interior.

Stainless steel exhaust. For longer life, Malibu's exhaust system is made from corrosion-resistant aluminized stainless steel.

Chevrolet's commitment to you goes far beyond simply building quality automobiles. Chevrolet also supports you with a host of programs designed to make our cars easier to buy and more pleasant to live with over the long haul.

At General Motors of Canada, we know that selecting a new car is a serious process. In this brochure, we've endeavoured to provide you with essential information about the Chevrolet Malibu to help you make an intelligent, informed choice.

To learn even more about Malibu's many features and benefits, please visit our web site at

www.gmcanada.com™

or call our **CUSTOMER COMMUNICATION CENTRE**

AT **1-800-263-3777** or **1-800-263-7854** (French)
(TTY users, 1-800-263-3830).



Every new GM car and light-duty truck is backed by the GM TOTAL™ Warranty 3 years/60,000 km (whichever comes first) which covers complete vehicle repairs, including parts and labour, to correct any defects in material or workmanship occurring during the warranty period. The GM TOTAL™ Warranty requires no deductible. Tires are included. Warranty features include towing, no-charge warranty transfer, 6-year/160,000 km (whichever comes first) corrosion perforation coverage and 8-year/130,000 km (whichever comes first) coverage on catalytic convertors and powertrain control modules (PCM). Regular maintenance is not included. Application of additional rust-inhibiting materials is not required under the corrosion coverage and none is recommended. See your dealer for terms of this limited warranty.



When you drive away in your new 1998 GM car or light-duty truck, the security and convenience of round-the-clock Roadside Assistance is available via a toll-free number usable anywhere in Canada or the United States. During the warranty period, whenever a problem may occur, your Roadside Service Advisor is just a phone call away. Whether it's lock-out assistance, a jump start, a flat tire change, fuel delivery or towing assistance, simply call 1-800-268-6800 and we'll be there to assist you without charge. See your dealer for details.



Your GM dealer may offer courtesy transportation while your 1998 GM vehicle is serviced at your GM dealership for repairs covered under the 3 year/60,000 km GM TOTAL™ Warranty. See your GM dealer for full details.



General Motors Acceptance Corporation of Canada Limited (GMAC for short) is a General Motors division that was created specifically to assist GM Dealers in marketing new vehicles to qualified GM customers. You can arrange GMAC financing right in your GM dealer's showroom, and the terms of your arrangement can be tailored to fit your particular needs. It's a convenient, flexible alternative to a conventional bank loan.



GM SMARTLEASE is administered by GMAC as an alternative to traditional financing. Qualified SMARTLEASE customers pay for the portion of the vehicle that is used, rather than paying for the entire vehicle as with traditional financing. Consider these SMARTLEASE benefits: Affordable monthly payments, drive more vehicle for your money, drive a new vehicle more often, limited maintenance and repair expense, no resale risks or trade-in hassles and a guaranteed option-to-purchase price when your lease ends. Most importantly, there are no surprises with SMARTLEASE. Leasing doesn't have to be a mystery. See your GM dealer about the benefits of SMARTLEASE. Or call 1-800-32-SMART.



Start your dream rolling with The GM Card®. With the GM Visa® Card, your dream of owning a new GM car or truck can quickly become a reality. Every time you make a purchase using The GM Card, you earn 5% of that purchase which you can apply towards the purchase price or lease down payment of your next eligible new GM vehicle**. Earn up to \$3,500† without having to do anything other than charge your usual purchases to your GM Visa Card.

What's more, there is no annual fee. To receive an application or for full terms and conditions, please see your local GM Dealer, TD Bank branch or call 1-800-GM-DRIVE.

*Registered Trademark of General Motors Corporation, TD Bank licensed user.

**TD and GM are licensed users of Marks. **See the GM Card Program Rules for limitations and details. See your dealer for vehicle eligibility.

† Earn up to \$500 per Cardholder Year, for a maximum of \$3,500 over the most recent 7 consecutive years.



If you or your passenger(s) have a physical disability which prevents you from driving or riding in a factory-equipped vehicle, find out about the GM Mobility Program for Persons with Disabilities. You may be eligible for reimbursement of up to \$1000 (GST included) for adaptive equipment you may require for your 1998 GM vehicle. Your GM dealer can also set up complete GMAC financing for you. (SMARTLEASE not eligible.) Beyond that, your GM dealer can provide you with lists of qualified driver assessment centres and mobility equipment installers. Call this toll-free number for more information: 1-800-GM-DRIVE (TTY users, 1-800-263-3830).



Get \$750 (GST included) off. If you're a recent graduate from a recognized college or university, you may qualify for \$750 (GST included) off on the purchase or lease down payment of the new GM vehicle of your choice. Anyone graduating from a 3-year university degree program, a 2-year college program or, in Quebec, a 3-year CEGEP D.E.C. (Technique) program between May 1, 1995 and December 31, 1998 can take part. To get credit for your degree, see your GM dealer for full details.



GMPP coverage provides you with "Peace of Mind" protection from repair costs (parts and labour), as well as many associated expenses that may occur to your vehicle beyond the GM TOTAL™ Warranty period. Whether you're purchasing or leasing your GM vehicle, there's a GMPP coverage level and plan term to suit your budget and driving needs. Be sure to ask your GM dealer about the many benefits you receive through your purchase of the General Motors Protection Plan. There are other extended service plans in the marketplace, but GMPP is the only Extended Service Plan backed by the resources and commitment of General Motors.



If you want more than factory-installed options for your vehicle, ask your Sales Consultant about GM Accessories. Your GM dealer can supply and install quality parts and accessories engineered for all GM vehicles at competitive prices. When installed at the time of purchase, GM provides GM TOTAL™ Warranty coverage for all dealer-installed GM Accessories.



Buying a new vehicle is one of the most important decisions you can make. Naturally, you want to get the best possible value from your purchase. That's why regular maintenance is essential. It helps your vehicle last longer, run better and safer, with better fuel economy. What is more important it also enhances your resale or trade-in value. So you end up getting a greater return on your investment. Fitting routine maintenance into your busy schedule need not be difficult. Now, GM Goodwrench Service makes it easier, with one-stop shopping for all your routine maintenance needs. You need no appointment for a lube, oil and filter, done in 29 minutes or the next one is free. As well, GM trained technicians will efficiently take care of everything from brakes, exhaust, shocks and struts to tire rotation and tune-ups using only quality GM parts. The job is done right the first time with up front competitive prices. Whenever you see the GM Goodwrench Service sign, you know you've come to a convenient place you can trust for all your routine maintenance service. GM Goodwrench Service is available at authorized participating GM Dealers.



It's good to know, when you travel long distances, that there are hundreds of GM dealers in Canada, each one ready to provide you with professional service and genuine GM parts. You can phone the GM Customer Communication Centre toll-free at 1-800-263-3777 (English) or 1-800-263-7854 (French) (TTY users, 1-800-263-3830) to talk with trained representatives regarding any General Motors product or service. The Centre is open Monday through Friday, 7:30 a.m. to 11:30 p.m., EST.

SAFETY AND SECURITY

	SEDAN	LS
Air bags – driver and front passenger, frontal	S	S
Brakes – anti-lock braking system (ABS), 4-wheel	S	S
Brake/transmission shift interlock feature	S	S
Door locks – rear door, child-security	S	S
Headlamps – Daytime Running Lamps, automatic light control and flash-to-pass	S	S
Illuminated entry/exit system – theatre dimming and ignition key removal	S	S
Keyless entry system – remote	O	S
Safety belts – front seat height-adjusters	S	S
Safety belts – rear seat child shoulder belt comfort guides	S	S
Theft-deterrent system – PASSLock™	S	S

MECHANICAL

	SEDAN	LS
Battery – Delco Freedom II with run-down protection system	S	S
Brakes – power, front disc/rear drum	S	S
Drive – front-wheel	S	S
Engine – 2.4L Twin Cam L4 with SFI Horsepower – 150 @ 5600 rpm Torque – 155 lb.-ft. @ 4400 rpm	S	-
Engine – 3.1L 3100 V6 with SFI Horsepower – 150 @ 4800 rpm Torque – 180 lb.-ft. @ 3200 rpm	O	S
Engine block heater	S	S
Exhaust system – aluminized stainless steel	S	S
Steering – power, rack-and-pinion	S	S
Suspension – 4-wheel independent	S	S
Transmission – 4-speed electronically-controlled automatic with overdrive and 2nd gear start	S	S

EXTERIOR

	SEDAN	LS
Body panels – 2-sided galvanized steel	S	S
Fog lamps	-	S
Glass – Soft-Ray, tinted	S	S

WHEELS



A - 15" bolt-on wheel covers



B - 15" cast-aluminum

EXTERIOR (CONTINUED)

	SEDAN	LS
Headlamps – composite halogen	S	S
Mirrors – dual, left remote, right manual	S	-
Mirrors – dual, left and right power remote	O	S
Mouldings – bodyside	S	S
Mud guards – front and rear wheels	O	O
Paint – base-coat/clear-coat	S	S
Sunroof – power, sliding glass panel	O	O
Tires – P215/60R15 all-season touring blackwall	S	S
Wheels – 15" x 6" steel with bolt-on wheel cover (A)	S	-
Wheels – 15" x 6" 9-spoke cast-aluminum (B)	O	S

INTERIOR

	SEDAN	LS
Air conditioning – manual	S	S
Console – front floor, storage, armrest, cupholder	S	S
Cruise control – electronic with resume, coast and decelerate/accelerate features (steering wheel mounted)	O	S
Defogger – electric rear-window, zoned	S	S
Door locks – power	O	S
Fabric – Scotchgard™ Protector (included on cloth seats, door trim, floor carpeting and mats)	S	S
Floor mats – front and rear, carpeted	S	S
Heat ducts – rear seat	S	S
Instrumentation – analogue cluster (includes speedometer, tachometer, coolant temperature and fuel gauges)	S	S
Instrumentation – low oil level sensor (included with V6 engine)	O	S
Lamps – dome courtesy, instrument panel, ashtray, glove compartment and trunk	S	S
Mirror – rearview with dual reading lamps	O	S
Mirror – visor vanity, passenger-side, illuminated	-	S
Mirrors – visor vanity, left and right covered	S	S
Seat – 6-way power driver adjuster	O	S
Seats – cloth reclining front bucket seats with floor console	S	-
Seats – Custom cloth reclining front bucket seats with floor console (includes split-folding rear seatbacks and cargo convenience net)	O	-
Seats – LS Custom cloth reclining front bucket seats with floor console	-	S
Seats – reclining bucket seats with leather seating surfaces	-	O
Seatbacks – split-folding rear	O	S
Steering column – Tilt-Wheel™, adjustable	S	S
Trunk – cargo convenience net	O	S
Trunk – power remote release	S	S
Windows – power, driver's express-down and passenger lock-out features (includes power mirrors on base Malibu)	O	S
Windshield wipers – 2-speed with variable delay (intermittent)	S	S

SOUND SYSTEMS

	SEDAN	LS
All Malibu sound systems include an electronically tuned Delco AM/FM stereo with seek up/down, scan, digital clock and premium 4-speaker sound system.		
AM/FM stereo, cassette tape player, Auto Tone Control, Speed Compensated Volume control and Delco TheftLock™	S	S
AM/FM stereo, CD player, Auto Tone Control, Speed Compensated Volume control and Delco TheftLock™	O	O
AM/FM stereo, cassette tape and CD players, Auto Tone Control, Speed Compensated Volume control and Delco TheftLock™	O	O

PREFERRED EQUIPMENT GROUP PACKAGES

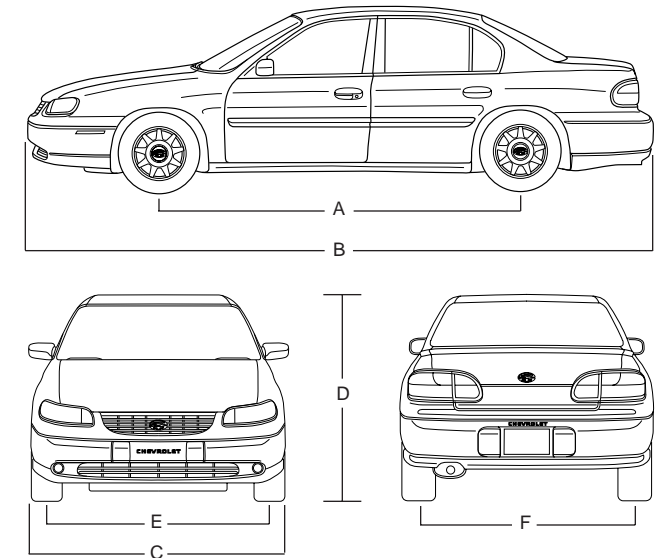
	SEDAN 1SB	1SC
Cruise control – electronic with resume, coast and decelerate/accelerate features (steering wheel mounted)	•	•
Door locks – power	•	•
Mirror – inside rearview with dual reading lamps		•
Mirrors – dual, left and right power remote		•
Keyless entry system – remote		•
Windows – power, driver's express-down and passenger lock-out features		•

TOWING

2.4L Twin Cam L4	Trailer towing not recommended with this engine
3.1L 3100 V6	3.05 final drive ratio 454 kg (1000 lb.) maximum gross trailer weight*

* Includes weight of trailer, cargo, passengers and equipment. All towing recommendations are subject to change. Trailer tongue load should be 10% of the maximum trailer weight but should not exceed the load rating specified for that vehicle, engine or hitch combination.

DIMENSIONS



EXTERIOR, MM (IN.)

Wheelbase (A)	2718 (107.0)
Length (B)	4836 (190.4)
Width (C)	1763 (69.4)
Height (D)	1433 (56.4)
Front tread (E)	1499 (59.0)
Rear tread (F)	1506 (59.3)

INTERIOR, MM (IN.) FRONT/REAR

Head room	1001/955 (39.4/37.6)
Leg room	1063/965 (41.9/38.0)
Shoulder room	1415/1405 (55.7/55.3)
Hip room	1323/1322 (52.1/52.0)

CAPACITIES/WEIGHT

Trunk, L (cu. ft.)	464 (16.4)
Fuel tank, L (gal.)	58 (12.6)
Curb weight (est.), kg (lb.)	1384 (3052) Sedan 1396 (3078) LS

EXTERIOR COLOURS

Colours may not be exactly as illustrated due to restrictions of printing process. Please see your sales consultant for specific colour and model availability.



16 –Bright White



41 –Black



51 –Dark Carmine Red Metallic



17 –Silvermist Metallic



42 – Medium Malachite Metallic



56 – Dark Jade Green Metallic



24 –Medium Opal Blue Metallic



49 – Sandrift Metallic



77 – Dark Cherry Metallic

EXTERIOR/INTERIOR COLOUR COMPATIBILITY

EXTERIOR	INTERIOR	MEDIUM NEUTRAL	LIGHT GRAY*	MEDIUM GRAY	MEDIUM OAK*
16 – Bright White		•	•	•	•
17 – Silvermist Metallic		•	•	•	•
24 – Medium Opal Blue Metallic		•	•	•	•
41 – Black		•	•	•	•
42 – Medium Malachite Metallic		•	•	•	•
49 – Sandrift Metallic		•	•	•	•
51 – Dark Carmine Red Metallic		•	•	•	•
56 – Dark Jade Green Metallic		•	•	•	•
77 – Dark Cherry Metallic		•	•	•	•

* Not available with leather seating areas.

A Word About This Brochure
This brochure is based on the latest information at the time of printing. General Motors of Canada Limited reserves the right to make changes at any time, without notice, to specifications, equipment, colours, models, availability, programs and services. Your Chevrolet dealer is the best source for up-to-date information.

A Word About Assembly
Chevrolets are equipped with engines and components produced and assembled by different operating units of General Motors, its subsidiaries and suppliers and these engines and components may change or be obtained from different sources from time to time. All such engines and components are approved for use in Chevrolets. Certain equipment ordered may be unavailable at the time of assembly and we suggest that you verify that your vehicle includes the equipment you ordered, or if there are changes, that they are acceptable to you.

Please Note: Instruments shown throughout this brochure are metric in Canada. General Motors, GM, the GM emblem, the GM Canada web site address, Chevrolet, the Chevrolet emblem, DEX-Cool, Dexron, Freedom, Malibu, Soft-Ray, Tilt-Wheel and the TOTAL Warranty are all trademarks of the General Motors Corporation and/or General Motors of Canada Limited.

GMAC and SMARTLEASE are trademarks of the General Motors Acceptance Corporation. PASSLock and TheftLock are registered trademarks of the Delco Electronics Corporation. Scotchgard is a trademark of the 3M Corporation.

Printed in Canada, September 1997. © General Motors of Canada Limited

INTERIOR FABRICS

CLOTH

Light Gray Medium Gray Medium Neutral Medium Oak



CUSTOM CLOTH

Light Gray Medium Gray Medium Neutral Medium Oak



LS CUSTOM CLOTH

Light Gray Medium Gray Medium Neutral Medium Oak



LS LEATHER

Medium Neutral Medium Gray

