



zoom-zoom

Get more detailed information on your Millenia. Check out our website at www.mazda.ca for specifications and features, option packages, pricing, financing and to find a dealer near you.



Mazda Canada Inc., Suite 400, 305 Milner Avenue, Scarborough, Ontario M1B 3V4
Printed in Canada. Part No. 9999-92-ML02-EN



mazda

www.mazda.ca

zoom-zoom

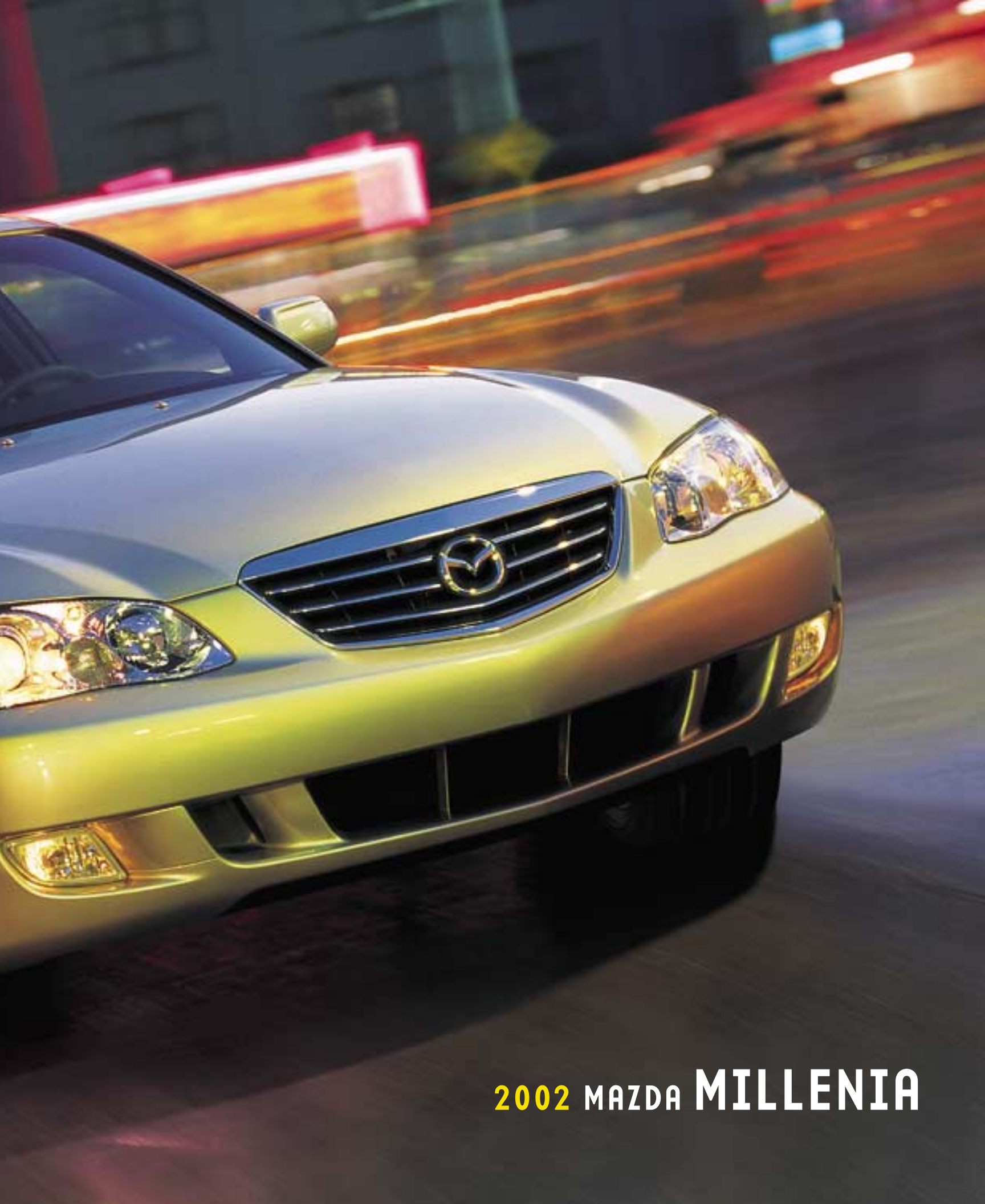
2002 MAZDA
MILLENNIA



mazda

www.mazda.ca





2002 MAZDA **MILLENNIA**



YOU'VE NEVER OUTGROWN
THE THRILL OF MOTION.
NEITHER HAVE WE.



Flying down the straightaways, sailing through the curves, scenery flashing by, all the while your heart rate following the climb of the tachometer. How is it that such a refined car can provide so many visceral rewards? You could start with the 210-hp Miller Cycle engine, the only automotive engine of its type. And with no fuel-economy penalty. It's one more example of Mazda engineers having their priorities in the right place. Not to mention their emotions.





THE TANGIBLE FEATURES BEHIND ALL THOSE INTANGIBLE REWARDS.

Even the quickest look makes it obvious that the Mazda Millenia is abundantly equipped. Yet that's only the beginning. Start with the pure performance. Add the euphoria generated by its many luxury amenities, such as the Bose® 9-speaker sound system with controls mounted on the steering wheel. The sleek black instrument panel springs to illuminated life when you turn the key. The lasting satisfaction from the sense this car was built just for you. The way the Mazda Millenia takes care of your passengers. Many tangible features. Infinite intangible rewards.







THIS IS THE ONE PLACE

OUR ENGINEERS PLAYED IT SAFE.



Whatever the driving situation, you can count on our engineers who have been there first. Heavy traffic? With its advanced suspension system and responsive power, the Millenia is quick to act when called upon. Is the weather turning streets into skating rinks? The Mazda



Millenia's Anti-lock Brake System and electronic traction control are on hand to help keep you on your intended path. The body structure incorporates "crumple zones" to help absorb impact forces and direct them away from the cabin. And inside, you'll find a long list of safety measures. Now, there are all sorts of areas in car design where it's okay, even encouraged, to take chances. But occupant safety? Never.

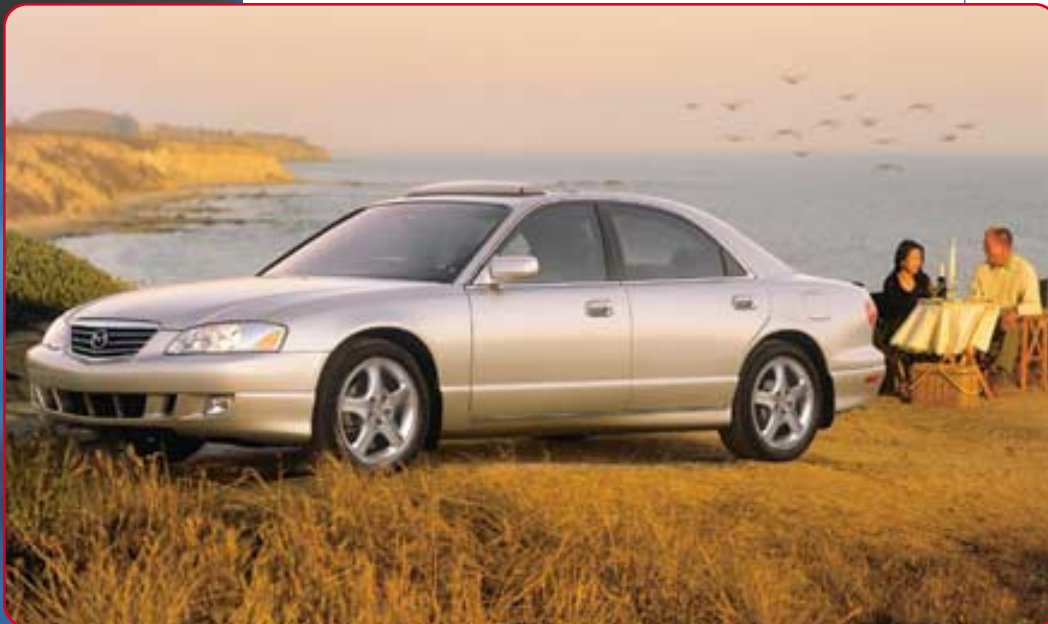
2002 MAZDA MILLENIA

ACCESSORIES



From top to bottom: Moonroof wind deflector, mud guard and cargo net.

- Cargo net
- Mud guards (front and rear)
- Front mask
- Moonroof wind deflector
- Rear spoiler
- Wheel locks
- Engine block heater



Mazda notes that all Genuine Mazda Accessories, if installed by your Mazda Dealer prior to or at an initial vehicle retail delivery, carry the same new-vehicle warranty as the Millenia.

COLOUR COMBINATIONS

EXTERIOR COLOUR	INTERIOR COLOUR
Sand Mica	Beige
Brilliant Black	Beige
Platinum Silver Metallic	Grey
Snow Flake White Pearl Mica/ Champagne Silver	Beige
Brilliant Black/Gentry Silver Metallic	Grey

MAZDA WARRANTY The basic warranty on the Mazda Millenia covers all parts found to be factory defective for 3 years or 80,000 km whichever comes first. Additional warranties cover powertrain components for a period of 5 years or 100,000 km whichever comes first, body sheet metal perforation for 5 years and unlimited mileage and specific emission control components for up to 8 years or 128,000 km. Exclusions from coverage are limited to maintenance items or adjustments (repairs not requiring parts replacement) on vehicles over 12 months old and repairs due to normal wear and tear. Ask your Mazda Dealer for additional information.

ROADSIDE ASSISTANCE PROGRAM As part of our commitment to your total satisfaction, 2002 Millenia owners are automatically enrolled in our Roadside Assistance Program. Roadside Assistance protects your Millenia for the duration of the 3-year basic limited warranty. Should you require assistance during this period, our service will help to get your vehicle back on the road and minimize any inconvenience. For complete details on this program, see your Mazda Dealer.



For peace of mind motoring, we've created the Mazda Added Protection Plan (MAP). MAP complements your Mazda Limited Warranty for up to 7 years or 160,000 km, and protects you from unexpected repair expenses and the rising cost of repairs. All MAP plans include Personal Budget and Repair Inflation Protection. In addition, all MAP plans include Premium Roadside Assistance, which extends the roadside assistance coverage offered during the new vehicle limited warranty period throughout the MAP term. The Premium Roadside Assistance offers Towing, Battery Boost, Out-of-Fuel Coverage, Tire Service, Lockout Service, Emergency Travel Expense Reimbursement and Travel Planning. Should you ever decide to sell your Mazda vehicle, MAP is transferable to future owners and will enhance the resale value of your vehicle. The Mazda Added Protection Plan is fully backed and administered by Mazda Canada Inc. For more information, please contact your Mazda Dealer.

Product changes and options availability: Following publication of this brochure, certain changes in standard equipment, options, prices and the like, or product delays may have occurred which would not be included in these pages. Your Mazda Dealer is your best source for up-to-date information. Mazda reserves the right to change product specifications at any time without incurring obligations. Options and accessories shown or described in this brochure are available at extra cost and may be offered only in combination with other options or subject to additional ordering requirements or limitations. E. & O. E.



Sand Mica



Brilliant Black



Snow Flake White Pearl Mica

only available in 2-tone with Champagne Silver (Champagne Silver appears on lower quarter panel)



Champagne Silver



Beige Leather



Platinum Silver Metallic



Brilliant Black



Gentry Silver Metallic

also available in 2-tone with Gentry Silver Metallic (Gentry Silver Metallic appears on lower quarter panel)



Grey Leather

2002 MILLENIA SPECIFICATIONS

ENGINE

Type	2.3L V6 (Miller Cycle)
Valve gear	DOHC 24-valve
Displacement	2254.6 cc
Bore and stroke	80.3 x 74.2 mm
Compression ratio	10.0 : 1
Horsepower SAE net	210 @ 5,300 rpm
Torque, SAE net lb. ft.	210 @ 3,500 rpm
Fuel system	Multi-port Electronic Fuel Injection (EFI)
Recommended fuel	Premium unleaded

DRIVETRAIN

Type	Front engine/front drive
Clutch type	Torque converter with electronic lock-up
Transmission	4-speed electronically controlled automatic with hold mode; engine torque sensing electronic traction control system.
Gear Ratios:	
1st	2.785
2nd	1.545
3rd	1.000
4th	0.694
Reverse	2.272
Final drive	3.805

ELECTRICAL SYSTEM

Type	12 Volt
Battery	Heavy-duty, maintenance free, 55 amp/hr
Alternator	110 amp
Cold cranking capacity	582 amps

ELECTRICAL SYSTEM (cont'd)

Starter	2.0 kw
Ignition system	Breakerless electronic

SUSPENSION

Frame	Unit body (Monocoque) with side door impact protection beams and Triple "H" construction
Front suspension	Multi-link, strut type with coil springs and stabilizer bar
Rear suspension	Multi-link, strut type with Trapezoidal layout and coil springs.
Shock absorbers	Cylindrical, double-acting w/ internal coil spring

CHASSIS

Steering	Rack-and-pinion type with engine rpm sensing variable power-assist
Steering ratio	17.0:1
Steering wheel turns	2.9 (lock-to-lock)
Min. turning circle	11.4 m (curb-to-curb)
Brakes	4-wheel power-assisted with dual hydraulic circuits 297 mm ventilated front discs 287 mm solid rear discs 4-sensor, 3-positioning sensing Anti-lock Brake System with EBF (Electronic Brake Force Distribution system)
Wheels	17" chrome alloy wheels
Tires	215/50 VR17 all-season
Curb weight	1,582 kg

CAPACITIES

Seating	5 persons
Engine oil	4.1L
Coolant	7.5L
Washer fluid tank	5.5L
Fuel tank	68L

EXTERNAL DIMENSIONS (MM)

Wheelbase	2,750
Track (fr/rr)	1,520/1,520
Overall length	4,870
Overall width	1,770
Overall height	1,395
Ground clearance	125

INTERNAL DIMENSIONS (MM)

Headroom (fr/rr)	963/928
Legroom (fr/rr)	1,100/866
Shoulder Room (fr/rr)	1,400/1,377
Passenger volume (fr/rr)	1,539/1,123L
Trunk room capacity	368L
Total volume	3,039L

TRANSPORT CANADA FUEL ECONOMY RATINGS

City	12.2 L/100km
Highway	8.0 L/100km

ESTIMATED PERFORMANCE DATA

Acceleration (0 - 100 km/h)	8.2 seconds
Acceleration (1/4 mile)	16.7 seconds
Top speed (km/h)	230
Coefficient of drag (Cd)	0.29
Weight distribution (% fr/rr)	62/38

2002 MILLENIA FEATURES

ENGINEERING FEATURES

2.3L DOHC 24-valve Miller Cycle V6 engine	S
4-speed electronically controlled automatic transmission	S
Rack-and-pinion steering with engine rpm sensing variable power-assist	S
Power-assisted 4-wheel disc brakes	S
4-wheel Anti-Lock Brake System (ABS - 3-position sensing) with EBF (Electronic Brake Force Distribution system)	S
Electronic traction control system; Front engine/front-wheel drive	S
4-wheel independent multi-link suspension; Front stabilizer bar	S
Side-impact protection beams - 4-doors; Heavy-duty battery	S

EXTERIOR FEATURES

17" chrome alloy wheels; 215/50 VR17 all-season tires; Compact spare tire	S
Green tinted glass with sunshade band; Variable intermittent windshield wipers	S
Flush-mount high efficiency Halogen headlamps; Integrated Halogen front fog lamps	S
Dual body-colour heated breakaway power door mirrors with integrated rain gutters	S
Body-colour bumpers and door handles	S
Chrome front grille, side window moulding and rear finisher panel moulding	S
Power glass moonroof with sunshade; Hood insulator	S
Fuel cap retainer in fuel filler door; Front and rear windshield rain gutters	S

INTERIOR FEATURES: SEATING AND TRIM

Leather seating surfaces	S
Two tone leather wrapped steering wheel with bright brand symbol	S
Power-driver's seat with 10-way adjustment (including lumbar support)	S
Power front passenger's seat with 8-way adjustment; Heated front seats	S
Wood pattern trim on centre-console and power window switch bezels	S
Chrome plate to AT console panel, ventilation lever knob, door inner handle and spot lamp switch	S
Adjustable driver's headrest (height, fore and aft)	S
Adjustable front passenger's headrest (height); Adjustable rear headrests	S
Fold-down rear centre armrest with ski pass through	S
Unwoven carpet trunk lid trim; Floor mats	S

INTERIOR FEATURES: COMFORT AND CONVENIENCE

Power-tilt steering wheel with auto memory	S
Power door locks with illuminated central locking feature on the front doors (driver and passenger)	S
Power remote trunk release (includes valet lockout) and fuel lid release	S
Power windows with driver one-touch down feature	S
Illuminated power window switch (driver and passenger)	S
Retained power on power window; Illuminated remote outer mirror switches	S

MILLENIA S

INTERIOR FEATURES: COMFORT AND CONVENIENCE (cont'd)

Rear window defroster with automatic shutoff; Illuminated ignition key cylinder	S
Cruise control with steering wheel mounted switches	S
Fully automatic climate control system including non-CFC air conditioning, electric heater controls, front side-window demisters and rear seat heater vents	S
Module audio: Bose® audio system (200 watts), 9-speakers, in-dash 6-disc CD changer and rear window diversity antenna	S
Front and rear map lamps; Front and rear door courtesy lamps	S
Scuff plate with Millenia logo on stainless steel plate	S
Three roof-mount passenger-assist grips w/ rear coathooks	S
Cigarette lighter and ashtray; Driver's footrest; Front centre sun visor	S
Illuminated driver's and front passenger's visor vanity mirrors	S
Trunk-room illumination; Remote hood release	S

INTERIOR FEATURES: SAFETY AND SECURITY

Depowered dual front air bag supplemental restraint system	S
Front-side air bags; Vehicle theft-deterrent alarm system	S
Internal trunk release handle; Illuminated entry system	S
Child safety rear door locks; Height adjustable front safety belt anchors	S
Three-point outboard and two-point centre rear safety belts	S
Ignition key reminder chime	S
Remote keyless entry system (with 2 transmitters); Inner groove master key	S

INTERIOR FEATURES: STORAGE

Centre-console storage compartment (includes slots for 6 CDs or 4-cassette tapes)	S
Lockable illuminated glove box; Coin box	S
Front door storage compartments with lids	S
Rear panel shelf storage compartment with lid	S
Front seat back pockets; Front cupholders (2)	S
Rear armrest with dual cupholders	S

INTERIOR FEATURES: INSTRUMENT PANEL

Two-tone IP panel; Digital quartz clock	S
Gauges: Tachometer, Speedometer, Odometer, fuel and engine temperature	S
Warning Lights: brake system, parking brake, safety belt, charging system or alternator, engine oil, traction control, low fuel, low washer fluid, ABS, door ajar, engine electrical system and air bag	S
Headlamp auto off; Panel light control	S

S = Standard

Bose® is a registered trademark of Bose Corporation.