

For more information or
to design your own RL,
visit acura.ca.

Advanced beyond engineering,
Acura brochures are printed with
the planet's future in mind.



2010
RL



RL

PERFORMANCE LUXURY, ADVANCED.



The 2010 Acura RL. From its sculpted, streamlined body style and luxuriously refined interior to engineering and amenities that inspire as effortlessly as they exhilarate, the RL sets an ultramodern tone for ultimate sedan luxury. It's flagship automotive technology without compromise or equal.

Progress has been made.



DESIGN

The RL's aggressive new exterior design has been crafted with nothing but high-performance purpose in mind. The design momentum begins with its chiselled hood that seamlessly flows to the forward-mounted acoustic glass windshield, and finishes with a rear overhang. Cutting-edge aerodynamic panels help redirect airflow to lessen vehicle lift at highway-driving speeds. The cabin features flush side glass for reduced drag and less wind noise. But perhaps the most exciting aspect to the exterior design of the 2010 RL is that it looks as fast as it moves.

18-INCH WHEELS

Impressive 7-spoke 18-inch aluminum-alloy wheels with large-diameter tires connect you to the road like never before while enhancing the RL's confident style and aggressive appearance. Plus, the large integrated dual-outlet chrome exhausts hint at an engine enriched with horsepower, attitude and pulse-racing performance.

STRUCTURE

Advanced is what advanced is made of. In the RL's case it incorporates strong, yet lightweight, structural components made from materials such as aluminum, magnesium and carbon fibre. The driving result is a reduction in the RL's curb weight, which in turn improves handling and increases the performance and fuel efficiency.

Experience a more refined adrenaline rush.



STEERING POWER

To optimize performance steering at high speeds and increase manoeuvrability at lower speeds, the RL relies on a sophisticated speed-sensing, electronically controlled power-steering system. Now, from quick hairpins and sweeping highway curves to tight city-centre agility, your overall experience is one of confident control.

PADDLE SHIFTERS

As they say, "all luxury and no performance can make for comfortably dull driving." Thankfully you'll find manual upshift and downshift paddle shifting transmission controls mounted just behind the RL's leather-wrapped steering wheel. Specifically tuned to complement the RL's already quick-shifting 5-speed automatic transmission, paddle shifters provide you with that added touch of exhilaration and excitement so many other luxury sedans can't seem to put their finger on.

4-WHEEL VENTILATED DISC BRAKES

When you're driving a performance luxury sedan, nothing short of exceptional stopping power will do. That's why the RL comes with special high-friction brake pads for that distinctive sporty feel and incredibly quick, responsive braking power. Furthermore, that's why all four wheels have ventilated brake rotors and robust 4-piston aluminum front brake calipers to help minimize weight shifting and optimize suspension response to give you stopping power when you need it.

SPORT SUSPENSION

Master the art of cornering with the smooth ride-enhanced control of the 4-wheel independent double-wishbone front and multi-link rear suspension. Experience the science of suspension with the multi-link rear suspension that's designed to provide solid resistance to lateral forces and less rear lift during hard braking. Plus, large front and rear stabilizer bars minimize vehicle body roll, delivering precise firm handling and a solid steering feel.

The science behind the sophistication.

DRIVER RECOGNITION

As long as your RL key is within sensor range, simply touch the inside of the driver's side door handle to unlock the door. And following the same procedure on the passenger's side, touch the inside of the door handle and the system will unlock all the doors. Actually, you can open the trunk, start the engine, drive, shut the engine off and re-lock all the doors – all without ever touching a key. Plus, with the programmable driver's recognition system, outside mirrors, seats and climate controls can all be personalized at the push of a button.

USB AUDIO PLAYBACK

Conveniently housed in the centre console, the USB device connector and auxiliary input jack enable you to plug in any number of compatible MP3 portable audio players. Plus, you can control the playback volume and track selection from your steering wheel-mounted controls.

ILLUMINATED STEERING WHEEL-MOUNTED CONTROLS

Behold convenience. Easy-to-read-and-reach steering wheel-mounted controls let you adjust the audio, telephone, and Multi-Information Display and engage the cruise control. And you can do all of this without ever having to remove your hands from the luxurious leather-wrapped steering wheel.

VOICE-ACTIVATED SATELLITE-LINKED NAVIGATION

The RL can zero in on your location almost anywhere in North America. It can also access its search directory to help you find directions. Recognizing up to 800 verbal commands, the system is equipped with bilingual voice recognition software and features real-time driving directions by voice or guiding map display. Simply ask the system to show you the most direct route to your destination, offer an alternate route or, with the Zagat® Survey ratings, help you pick a restaurant based on the kind of cuisine you're craving.

ACURA / BOSE® PREMIUM SOUND SYSTEM

An exceptionally rich audio experience unlike anything you've ever heard in a car awaits you in the RL. A truly cutting-edge 260-watt digital amplifier powers 10 acoustically positioned speakers. The in-dash 6-disc CD/DVD-Audio DTS® changer with an AM/FM/XM®* tuner can read various audio media formats to provide a true 5.1 digital surround sound experience. And with such amazingly high audio resolution, dynamic range and full frequency response, the system delivers premium sound with phenomenal fidelity throughout the interior soundscape.

BOSE ((XM))

HANDSFREELINK™ AND BLUETOOTH®-ENABLED TECHNOLOGY

Program and link your Bluetooth-enabled mobile phone to the HandsFreeLink telephone interface to make, receive and transfer calls without interruption or having to remove your hands from the steering wheel. Say the word and – providing your programmed mobile phone is located inside the cabin – calling numbers will be displayed, your phone will respond to voice activation and you will hear the caller's voice over the RL's audio system. Plus, the system operates in English or French and is capable of integrating up to six different compatible phones, turning your RL into a tastefully appointed command centre.

Bluetooth

RL Elite Package shown.
*Includes a no-charge trial of 3 months, beyond which service fees apply. Available in 10 Canadian provinces and 48 contiguous U.S. states. See terms and conditions at www.xmradio.ca.



First-class for five.

ACTIVE NOISE CANCELLATION (ANC)

An already quiet ride is now even quieter with the Active Noise Cancellation (ANC) system that cancels engine noise by countering it with opposing sound frequencies emitted from the sound system. Two ceiling microphones monitor low-frequency noise and, when detected, the ANC system counteracts and cancels the disturbance with an equivalent waveform.

ACTIVE SOUND CONTROL (ASC)

Operating in unison with the ANC system, Active Sound Control smooths out the sound created by the engine as it goes through its full rpm cycle. Utilizing advanced in-cabin microphones and complex electronic sensors, the system moderates noise made at low rpms and enhances the more progressive sounds the engine makes at higher rpms.

ADJUSTABLE LEATHER SEATS

Even the greatest distance between two points seems shorter when you're sitting comfortably in one of the two tightly bolstered, perforated leather-trimmed front seats of the Acura RL. Finding the ideal driving position is easy with the 8-way power-adjustable driver's seat with power-adjustable lumbar support and programmable driver recognition memory. Now, wherever you're heading, your seat will feel exactly as it should – perfect. And for the front passenger, there's an 8-way power-adjustable seat with power lumbar support as well.

HEATED SEATS

An additional measure of sumptuous driver and passenger comfort comes from the standard heated front seats. Featuring two heat settings, each seat offers a little extra cold-weather comfort. Plus, for warm-weather relief, the front leather seats feature the available benefit of in-seat ventilation, making the RL a true luxury sedan for all seasons.

300-hp

3.7-LITRE, 24-VALVE, VTEC® V-6 ENGINE

At 300 horsepower, the 3.7-litre, 24-valve, SOHC, VTEC V-6 is one of the most powerful engines Acura makes. And with lightweight aluminum-alloy block and heads for improved efficiency and heat shedding, it's one of the most technically advanced too. The engine heads feature a unique 4-valve design for optimal engine fuel flow, offering low-rpm torque for acceleration off the line and high-rpm power for passing on the highway. All the while the Multi-Point Programmed Fuel Injection (PGM-FI®) system offers you astounding performance and fuel efficiency in a low-emission vehicle with a Tier 2 Bin 5 rating.



HORSEPOWER AND TORQUE

Experience pure propulsion courtesy of the incredible 300 horsepower and maximum 271 lb.-ft. of torque produced by the VTEC power plant. Plus, thanks to innovative VTEC engine refinement, the high-inertia intake manifold and other powerband-enhancing technologies, the broad, flat torque curve allows for the feeling of virtually instant acceleration.



VTEC

VTEC ENGINEERING

Before VTEC engineering, engine tuning was always a compromise between balancing low-end torque and high-end power. Today, utilizing two entirely different camshaft profiles, VTEC engines deliver amazingly responsive power across the entire rpm range. At slow speeds, the engine provides lower valve lift and shorter cam profile openings, resulting in higher gas velocities and greater low-end rpm torque. As engine speeds increase, VTEC switches to a cam profile with higher valve lift and longer opening duration, for greater airflow and a boost in high-end rpm horsepower.



Brawn, beautifully done.

Confidence has
been built.

ELECTROMAGNETIC CLUTCH

Operating in unison with the SH-AWD® system are variable electromagnetic clutches that feature a compact 2-speed planetary gear set. The multi-plate clutch electronically regulates rear-wheel torque based on your driving demands and compensates by adjusting the acceleration of the outside rear turning wheel to inspire a further measure of cornering confidence and exhilaration.

CARBON FIBRE-REINFORCED PROPELLER SHAFT

Originally developed for use in aerospace and competitive auto racing, advanced carbon-fibre technology now finds a home in the RL. Extremely lightweight and strong enough to handle the amazing 271 lb.-ft. of torque produced by the engine, the carbon-fibre propeller shaft produces fewer vibrations and less noise than a traditional metal shaft, which results in an exceedingly smooth, stealth-like ride.

1. DURING STRAIGHT-LINE ACCELERATION

The groundbreaking SH-AWD system offers dramatically enhanced traction, control and acceleration in all weather or loose road conditions. Accelerate, and the system directs up to 40% of the engine's torque to the rear wheels to, in turn, deliver full power to the ground.

2. DURING A MODERATE CORNER

SH-AWD delivers a remarkably neutral steering feel as the rear wheels help generate cornering power. Electronic sensors monitor the speed and tightness of the turn, and automatically vary torque to the outside cornering rear wheel, resulting in enhanced stability and driver control.

3. DURING ACCELERATION THROUGH A CORNER

Here, the advanced SH-AWD technology stands alone. The outside cornering wheel gets up to 100% of the rear-wheel torque and is accelerated to rotate 5% faster than the inside cornering wheel, providing greater turning force and an incredibly stable corner line.

4. DURING STRAIGHT-LINE CRUISING

SH-AWD's sophisticated electronic controls automatically monitor road conditions and alternate torque from front to rear, as well as splitting rear-wheel torque from left to right. The end result is a continuously smooth, stable ride in poor weather or road conditions.

Super Handling All-Wheel Drive™ (SH-AWD®). Precision-tuned for the RL, this exceptionally advanced all-wheel-drive technology helps you gain more traction in less-than-perfect conditions and provides you with the confidence to carve the perfect corner in every other condition.

Exceptionally forward thinking.



ADAPTIVE CRUISE CONTROL (ACC)

The available Adaptive Cruise Control (ACC) system allows you to set a time and distance interval between you and the car driving in front of you. During highway cruising simply engage the ACC, and the system will prompt you to choose a short, medium or long interval between you and the vehicle ahead. The system will then maintain the exact throttle speed, and if required automatically apply moderate braking, to ensure your selected distance is maintained.

ACTIVE FRONT LIGHTING SYSTEM (AFS)

Available with the RL Elite Package, the Active Front Lighting System (AFS) automatically swivels headlights from left to right up to 20 degrees to enhance visibility while cornering at night.

HIGH-INTENSITY DISCHARGE (HID) HEADLIGHTS

High-powered HID headlights produce an intensely brilliant beam of focused light to improve your ability to identify what's on the road ahead and what to avoid.

Collision Mitigation Braking System™ (CMBS®). For advanced safety and a level of luxury that extends beyond conventional wisdom, RL Elite Package models are equipped with the Collision Mitigation Braking System (CMBS). Powered by a radar transmitter located behind the vehicle's front grille, the system instinctively determines the distance and closing speed of the vehicle directly ahead of you.

1. RECOGNITION OF POSSIBLE COLLISION

If the closing speed exceeds a programmed threshold, the system warns the driver with audio and visual alerts.

2. SEAT BELTS TIGHTEN AND LIGHT BRAKING BEGINS

If no braking or speed reduction is detected, the system will gently pull the driver's seat belt and automatically begin light braking.

3. STRONG BRAKING

If all warnings have been ignored and the system determines an impact is unavoidable, strong braking is automatically applied to reduce the collision speed and mitigate the force of the accident.

SAFETY

AIRBAGS

Maximum safety is achieved with six airbags designed to protect all occupants inside the cabin. Depending on the point and force of impact, the RL will deploy dual-stage, dual-threshold front airbags that activate at one of two rates depending on the severity of the impact; front side airbags with the innovative passenger-side Occupant Position Detection System (OPDS) that will not release if the system detects a small-sized or improperly positioned passenger; and side curtain airbags with state-of-the-art rollover sensors.

ABS

The Anti-lock Braking System (ABS) helps maintain steering control when braking hard on wet, slippery, or loose surfaces, while Electronic Brake Distribution (EBD) balances braking forces at each wheel to help compensate for weight distribution inside the cabin. Plus, there's a Brake Assist feature that senses a panic stop and applies maximum braking power to help you stop quickly.

At Acura, Safety Through Innovation is based on the idea that an advanced driving experience starts with advanced safety features. This guiding principle is reinforced through the extensive number of standard safety features and use of innovative technologies you'll find in all Acura vehicles.



INSURANCE INSTITUTE
FOR HIGHWAY SAFETY

VSA®

The Vehicle Stability Assist (VSA) system with Traction Control will automatically detect and correct understeer or oversteer situations before you're even aware there's a need. The system intuitively monitors your driving conditions and automatically reduces the throttle and/or applies braking to individual wheels. Should a loss of traction occur during acceleration on slippery road surfaces, Traction Control will compensate to get you safely underway.

TIRE PRESSURE MONITORING SYSTEM

Correct tire pressure is critical to safety, performance and fuel efficiency. Enter the RL's Tire Pressure Monitoring System (TPMS), which continually monitors the air pressure in each tire. If pressure drops in any tire, a transponder attached to the wheel's valve stem transmits the information to a receiver, and a warning appears on your instrument panel indicating which tire requires attention.

MAINTENANCE MINDER SYSTEM

Instead of following a traditional kilometre-and-calendar maintenance schedule, the RL instinctively calculates service needs based on your driving habits. This advanced system takes into account engine revolutions, stop-and-go traffic experience, weather extremes and the frequency of short trips to determine when your next service visit should be. The system helps coordinate oil-servicing dates and other routine maintenance as well.

ACE™

The innovative Advanced Compatibility Engineering™ (ACE) body structure adopts a high-tensile, high-efficiency unit-body safety cell structure to provide enhanced protection from multi-directional collision. ACE reduces the concentrated force of a frontal impact by absorbing energy over a large area and dispersing it away from you and other occupants inside the interior cabin space. Additionally, ACE is also designed to help reduce occupant injuries caused by misalignment in collisions between vehicles of different sizes.

REARVIEW CAMERA

The rearview camera shows a colour image on the navigation-system screen of the area directly behind the vehicle. Even if the navigation system is turned off, the camera is activated automatically when you engage reverse, giving you a clear picture of what is behind you.

A first for Acura.
A first for anyone.
Acura was the industry's first automotive manufacturer to have its entire 2009 model line-up receive a Top Safety Pick rating from the Insurance Institute for Highway Safety (IIHS).

ENGINE

Engine	3.7-litre, 24-valve, SOHC, VTEC® V-6
Horsepower	300 hp @ 6300 rpm
Torque	271 lb.-ft. @ 5000 rpm
Displacement	3664 cc
Redline	6800 rpm
Bore and stroke	90 x 96 mm
Compression ratio	11.2
Multi-Point Programmed Fuel Injection system (PGM-FI®)	
Electronic direct ignition system	
Premium unleaded fuel	
Horsepower & Torque (SAE net Rev. 08/04, SAE J1349)	

DRIVETRAIN

5-speed automatic transmission with Sequential SportShift® paddle shifters and Grade Logic Control
 Drive-by-Wire Throttle System™
 Super Handling All-Wheel Drive™ (SH-AWD®)

SAFETY

3-point height-adjustable seat belts with load limiters and Automatic Tensioning System (front)
 3-point seat belts (rear)
 4-wheel Anti-lock Braking System (ABS) with Electronic Brake Distribution (EBD) and Brake Assist
 Active head restraints
 Advanced Compatibility Engineering™ (ACE™) body structure
 Childproof rear door locks
 Dual-stage, dual-threshold front airbags (SRS)
 Emergency trunk opener
 Front side airbags with passenger-side Occupant Position Detection System (OPDS)
 Lower Anchors and Tethers for Children (LATCH) child-seat mounting system
 Side curtain airbags
 Side-impact door beams
 Theft-deterrent system with electronic immobilizer
 Tire Pressure Monitoring System (TPMS) with location and pressure indicators
 Vehicle Stability Assist (VSA®) with Traction Control

CHASSIS

18" aluminum-alloy wheels
 4-piston caliper, ventilated front disc brakes
 4-wheel independent double-wishbone front suspension with multi-link rear
 Electronically controlled, speed-sensing, variable power-assisted rack-and-pinion steering
 Hydraulic gas-pressurized shock absorbers
 Stabilizer bar – front/rear
 Tires: P245/45 R18 M+S
 Ventilating rear disc brakes

EXTERIOR

Auto-on/off headlights
 Driver's and passenger's illuminated door handles
 Front body-coloured splash guards
 Front fog lights
 Headlight washer system
 Heated side mirrors with driver recognition, reverse gear tilt-down and integrated turn indicators
 Heat-rejecting green-tinted glass
 High-Intensity Discharge (HID) headlights
 Integrated dual-outlet exhaust
 Power moonroof with tilt, auto-open/close, auto-reverse, key-off operation and sliding shade
 Rear window defroster with timer

CAPACITIES

EPA cargo volume	371 litres
EPA passenger volume	2806 litres
Fuel tank capacity	73 litres

FUEL ECONOMY

City	13.1 litres/100 km*
Highway	9.0 litres/100 km*

COMFORT & CONVENIENCE

12-volt power outlets (front and centre console)
 Active Noise Cancellation (ANC)
 Active Sound Control (ASC)
 Acura Navigation System with bilingual Voice Recognition™, rearview camera and illuminated steering wheel-mounted controls
 Ambient cabin lighting – front and rear
 Automatic day/night rearview mirror
 Driver's and front passenger's illuminated vanity mirrors
 Electronic tilt and telescoping steering column with driver recognition
 Exterior temperature indicator
 GPS-linked, solar-sensing, dual-zone, dual-mode automatic climate control system
 HandsFreeLink™-bilingual Bluetooth® wireless mobile phone interface
 HomeLink® remote system
 Illuminated front centre console storage
 Illuminated ignition, power window switches, steering wheel controls and door lock switches
 Keyless Access System with driver recognition for driver's seat, steering wheel, outside mirrors, climate control and select audio and navigation settings
 Maintenance Minder system
 Multi-Information Display (MID)
 Overhead map lights – front and rear
 Power rear sunshade
 Power windows with auto-down/up, auto-reverse and key-off operation
 Rear-seat centre armrest with locking trunk pass-through and dual beverage holders
 Rear side sunshades (manual)
 Remote trunk and fuel-filler door releases
 Speed-sensing, variable intermittent windshield wipers
 Steering wheel-mounted controls (cruise control, audio, telephone, voice recognition and Multi-Information Display)
 Sunglasses holder
 Trip computer

ENTERTAINMENT

Acura/Bose® 10-speaker Surround Sound System with 6-disc CD, DVD-Audio and DTS® changers, AM/FM/XM®† tuner and MP3/Windows Media® Audio compatibility
 Auxiliary input jack
 Integrated glass antenna
 USB device connector

SEATING & TRIM

8-way power adjustment driver's seat with power lumbar support and driver recognition
 8-way power adjustment passenger's seat with power lumbar support
 Driver's and front passenger's seatback pockets
 Heated front seats
 Heated rear seats
 Leather-wrapped steering wheel and shift knob
 Perforated leather-trimmed seats
 Power rear-seat headrest retractor

EXTERIOR DIMENSIONS

Curb weight (RL / Elite Package)	1860/1863 kg
Height	1455 mm
Length	4973 mm
Track – front/rear	1576/1585 mm
Wheelbase	2800 mm
Width	1847 mm

INTERIOR DIMENSIONS

Headroom – front/rear	977/948 mm
Hip room – front/rear	1400/1372 mm
Legroom – front/rear	1076/923 mm
Shoulder room – front/rear	1487/1426 mm
Seating capacity	5

ACCESSORIES

All-weather floor mats – black or ivory	Locking wheel nuts
Ashtray	Moonroof visor
Car cover	Rear backup sensors
Cargo net	Rear bumper appliqué
Door edge film	Rear lip spoiler
Door visors	Rear splash guards
Engine block heater	Trunk edge and bumper protector
Full nose mask	Trunk tray

For more information on all accessories, please refer to the RL accessories brochure.

ELITE PACKAGE Adds to the RL

Active Front Lighting System (AFS)
 Adaptive Cruise Control (ACC)
 Collision Mitigation Braking System™ (CMBS®)
 Ventilating front seats, heating and cooling

*Use kilometrage for comparison purposes only. Your kilometrage may vary.

†Includes a no-charge trial of 3 months, beyond which service fees apply. Available in 10 Canadian provinces and 48 contiguous U.S. states. See terms and conditions at www.xmradio.ca.

ACCESSORIES

Advance your Acura,
your way.

Make your Acura yours.
Choose from an advanced
array of Acura genuine
accessories to get the style
you want and the practical
luxuries you'll wonder how
you ever lived without.



1



4



2



3



5

- 1. FULL NOSE MASK
- 2. REAR SPLASH GUARDS
- 3. LOCKING WHEEL NUTS
- 4. CAR COVER
- 5. DOOR VISORS



ACCESSORIES AVAILABLE:

- All-weather floor mats – black or ivory
- Ashtray
- Car cover
- Cargo net
- Door edge film
- Door visors
- Engine block heater
- Full nose mask
- Locking wheel nuts
- Moonroof visor
- Rear backup sensors
- Rear bumper appliqué
- Rear lip spoiler
- Rear splash guards
- Trunk edge and bumper protector
- Trunk tray

6. REAR LIP SPOILER

7. DOOR EDGE FILM

8. REAR BUMPER APPLIQUÉ

9. TRUNK TRAY

10. ALL-WEATHER FLOOR MATS – BLACK OR IVORY

11. REAR BACKUP SENSORS

12. CARGO NET



This year marks Acura's continued involvement with some of the world's most premier events and organizations. From our supporting sponsorship of the Masters Golf Tournament to our participation in the American Le Mans Series, Acura is proud of the role we play, drive and advance in North America.



Driving a luxury vehicle should go beyond engineering and amenities. That's why Acura is committed to ensuring your ownership experience is equally luxurious. New Acura owners benefit from four-year 24-hour Roadside Assistance, which includes Dispatch Emergency Roadside Service, Emergency Lockout Service and Traffic Accident Services. See your Acura Retailer for details.

WARRANTY

Your new Acura vehicle comes with the following warranties: Major Component (Powertrain) – 5-year/100,000-km limited warranty • Vehicle – 4-year/80,000-km Distributor's limited warranty • Rust Perforation – 5-year unlimited-distance warranty • Surface Corrosion – 4-year/80,000-km • Accessories – 4-year/80,000-km limited warranty (when installed by an authorized Acura Retailer at time of new vehicle delivery). Regular maintenance items and parts are subject to normal wear and replacement, and are not covered by warranty. Certain other items are excluded and certain conditions apply. See your Acura Retailer for details.

ACURA PLUS

Extend your worry-free ownership experience by purchasing additional coverage. Choose from Acura's flexible selection of Mechanical Coverage that extends up to 8 years or 200,000 km, whichever comes first. See your Acura Retailer for details.

LEASING AND FINANCING

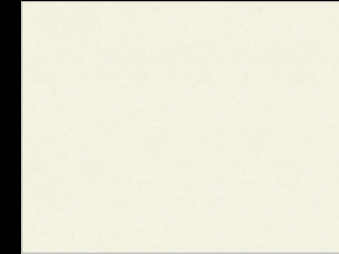
Owning your Acura is easy. See your Acura Retailer for complete details on: Acura Leadership Leasing,* Acura Future Value Financing* and Conventional Financing.*

*A genuine service of Honda Financial Services. Conditions, restrictions and prepayment requirements might apply O.A.C. Acura Future Value Financing does not apply in the province of Quebec.

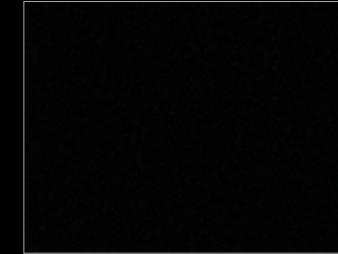
RL

COLOUR & TRIM

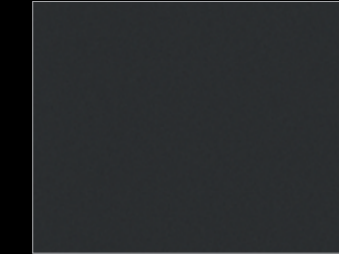
EXTERIOR AND INTERIOR RL RL and Elite Packages



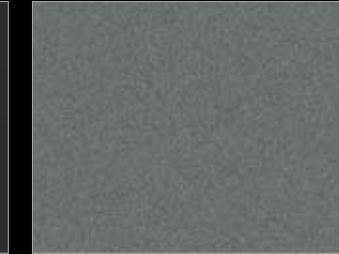
Alberta White Pearl | NH-717P



Crystal Black Pearl | NH-731P



Grigio Metallic | NH-736M



Silver Jade Metallic | NH-750M



Ebony or Parchment Leather



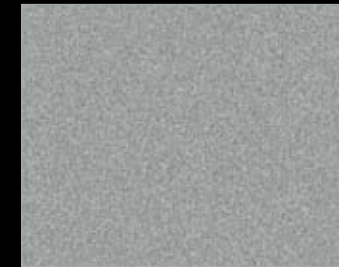
Ebony or Parchment Leather



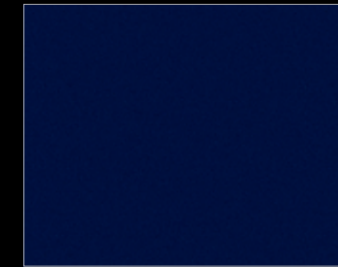
Ebony or Taupe Leather



Ebony or Taupe Leather



Platinum Frost Metallic | NH-727M



Opulent Blue Pearl | B-532P



Tuscan Beige Metallic | YR-575M



Ebony or Taupe Leather



Ebony or Parchment Leather



Parchment Leather

2010 RL model shown. Specifications, features, illustrations and equipment shown in this catalogue are based upon the latest available information at the time of publication. Remember your seat belts. It's a simple fact of life. Although descriptions are believed to be correct, accuracy cannot be guaranteed. Honda Canada Inc. reserves the right to make changes at any time, without notice or obligation, in colours, specifications, accessories, materials and models. Some vehicles are shown with optional equipment. Some vehicles shown are U.S. models. Canadian specifications may vary. Refer to the owner's manual for detailed towing information. Map Database of the Acura Navigation System covers major metropolitan areas in southern Canada and the 48 contiguous U.S. states. For a list of current detailed coverage areas, refer to the Acura web site, www.acura.ca. Bluetooth is a registered trademark of SIG Inc. Bose is a registered trademark of Bose Corporation. DTS is a registered trademark of DTS, Inc. HomeLink and HandsFreeLink are registered trademarks or trademarks of Johnson Controls Technology. Can be programmed with codes of up to three remote-control devices (e.g., garage-door opener, home security system, etc.). Additional control devices not provided by Acura may be required. Windows Media is a registered trademark of Microsoft Corporation. XM is a registered trademark of XM Satellite Radio Inc. Zagat is a registered trademark of Zagat Survey, LLC. Acura, RL, VTEC, Super Handling All-Wheel Drive, SH-AWD, Advanced Compatibility Engineering, ACE, SportShift, Drive-by-Wire Throttle System, Acura Navigation System with bilingual Voice Recognition, CMBS, Collision Mitigation Braking System, PGM-FI and VSA are trademarks of Honda Motor Co., Ltd. Acura, a division of Honda Canada Inc., 715 Milner Avenue, Toronto, Ontario, Canada M1B 2K8. 1-888-9-ACURA-9. www.acura.ca.