



Nothing moves you like a Citroën



CITROËN C4



Création et réalisation : ER 27 - Edition : ALTAVIA PRODIGY - Imprimé en U.E. - 09/2006

September 2006



Stylish charm

With its 'boomerang' front headlamps, its chevrons built into the chrome grille and its precisely designed shape giving optimum aerodynamics, it is hard to resist the unique charms of the Citroën C4, whether it's a Hatchback or a Coupé.





• Compact and low to the ground, the shape of the Citroën C4 suggests a real aura of dynamism and sportiness.

With its high, protective ring-of-steel and slim, beautiful profile, the Citroën C4 Hatchback is as comfortable as it is safe. From the minute you see it, you just want to take off in it.





Simple yet
unique

A Citroën innovation: the centre of the Citroën C4's steering wheel remains fixed at all times. The controls and lights built into the centre never move, however much the steering wheel is turned. The fixed centred controls allow access to all the different functions

at any given moment without your hands leaving the steering wheel or your eyes leaving the road - a quite unique comfort and safety feature.



•The on-board trip computer constantly keeps track of all the driver-useful information (range, distance travelled, fuel consumption and average and current speed...) and if necessary displays warning messages. Personalised configuration feature shown below ◊.



•The built-in telematics and navigation system with a large 16/9 colour screen ◊ is available as an option.

•As well as controlling the RDS stereo radio/CD player and the integral hands-free GSM telephone ◊, the C4's voice-recognition and voice-synthesis NaviDrive ◊ system uses GPS technology to pinpoint the location of the car at any given moment and by using the map CD-ROM, you can be sure of taking the best route.



Speed control



•The speed limiter allows you to set a maximum speed whenever you wish. A firm 'kick-down' on the accelerator is all that's needed to cancel this function temporarily and allow you to accelerate. As soon as the speed of the car falls back below the speed originally set, the limiter cuts back in again automatically.

•The speed regulator (cruise control) allows you to maintain a desired speed without using the accelerator. However, the speed can be increased or decreased and cancelled or reinstated at any time by using either the pedals or the fixed centred controls on the steering wheel.



Hi-fi system

•The Citroën C4's stereo radio/CD player is built into the centre of the dashboard and has an off-set display so that it is visible from every seat.



•The full range of Radio/Hi-fi controls is also built into the steering wheel with fixed centred controls.



•To guarantee the very highest quality sound, Citroën and JBL® have worked together to create an innovative speaker lay-out especially for the Citroën C4. The JBL® Hi-fi system in the C4 gives listeners a made-to-measure sound performance specially designed for the C4's cabin.



•The sub-woofer fitted in the boot gives an exceptional depth and quality of sound. On the move the volume of the RDS stereo Radio/CD player adjusts itself automatically as a function of the car's speed to maintain ideal listening conditions.

•Practical and safe - the automatic air-conditioning controls allow the driver and front passenger to regulate their own temperature setting.



•Thanks to its voice-recognition technology the 'BlueTooth®' system allows you to use your own mobile telephone very easily and very safely (as long as it is Bluetooth®-compatible), because the car takes over the functions of the telephone. Note: This feature is not compatible with NaviDrive.



•One of the controls on the left part of the steering wheel allows you to control the air recycling switch as well as the optional NaviDrive.



•To make hands-free calls the driver simply uses the controls on the base of the steering wheel. Communication takes place by means of a microphone built into the courtesy light console and the audio system, and calls can even be made by voice only using the voice-recognition feature.

Exceptional
driving comfort

The Citroën C4 has been designed to offer the very best driving experience in all situations - on the open road and in town, at high speed and when manoeuvring, whether it's raining, windy or snowing...

The ergonomics of the equipment, such as the centred translucent instrument display, and the intelligence of the driving-assistance functions, such as the variable power-assisted steering, give you a serene, comfortable drive.



TRIP -0+ CHECK



•Adjustable driver's seat and steering wheel. Optional electric driver's seat◊ featured above.



•Above the driver's seat a storage area for your glasses◊ allows you to keep them safe and within reach.

•Smart and effective, the 'flag-type' door mirrors have aspherical glass to reduce the blind spot.



•A retractable anti-return clip is built into the side of the front seats on Coupé models to restrain the seatbelt and so make it easier to use.



•To help prevent any risk of an impact, the front and rear parking sensors◊ have both an audible and visual directional alert feature.



•The Citroën C4's rear wiper activates automatically when the reverse gear is engaged and the front wipers are on.



•The translucent instrument display in the centre of the dashboard displays information on a strip that lets the light through. The display contrast adjusts automatically to ambient light conditions to ensure a clear read out at all times.



•Thanks to specially designed light sensors the Citroën C4's electrochromic rear-view mirror◊ darkens automatically to reduce the risk of dazzling from the headlights of cars behind.



•Whether manual or automatic, the air-conditioning system◊ has an advanced filter, and a recycling air feature controlled electronically either from the steering wheel◊ or the central fascia. On the automatic version dual-zone adjustment means the front passenger can have their own temperature setting.





The Citroën C4 goes even further in terms of comfort with the availability of a scented air freshener^o, styled to match the dashboard design. This scented air freshener contributes perfectly to the relaxed on-board atmosphere.







**Safety in
action**

The wide range of safety features on the Citroën C4 will impress you right from the start. These advanced safety features include state of the art Xenon dual function directional headlamps[◇]. In addition, a combination of active safety features coupled with the exemplary roadholding inherent in Citroën suspension technology, guarantees the best possible control of the car in all driving conditions, even the most hazardous.





•The advanced Xenon dual function directional headlamps^o, which work on both dipped and full beam, give a wide field of vision and follow the turn of the steering wheel. This increases visibility in the potentially dangerous dark areas on bends.

•Automatic illumination of headlamps^o as soon as the light fades or if it rains.



•Automatic rain-sensitive windscreen wipers^o which adapt the wiping speed to the intensity of the rain.



•The Citroën C4's tyre pressure monitor^o regularly checks the pressure of each tyre and warns the driver of any problem both visually and by sound - a very important safety feature.



•If you decelerate rapidly, the hazard warning lights come on automatically to warn drivers behind you; they go off when you accelerate again or you can switch them off manually.



Active safety



•Research shows that many drivers fail to brake with full force in an emergency. Emergency Braking Assistance (EBA) compensates for this by automatically maximising application of the brakes when strong braking is initially detected. Additional reassurance comes from the Electronic Stability Programme (ESP)^o, which monitors the car's progress through a bend and, if oversteer or understeer is detected, automatically modifies the engine's torque and applies one or more of the brakes to maintain stability and control.

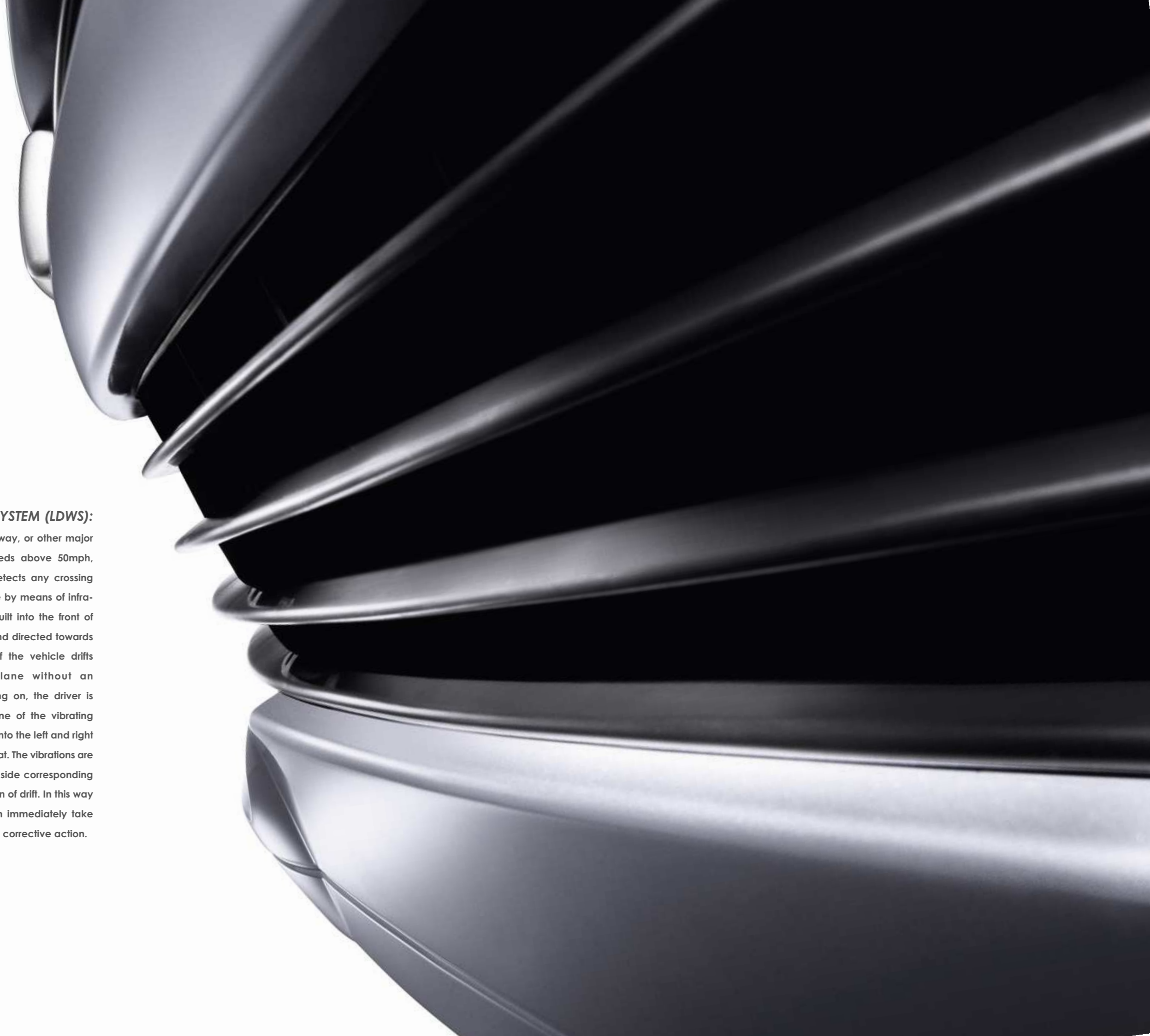


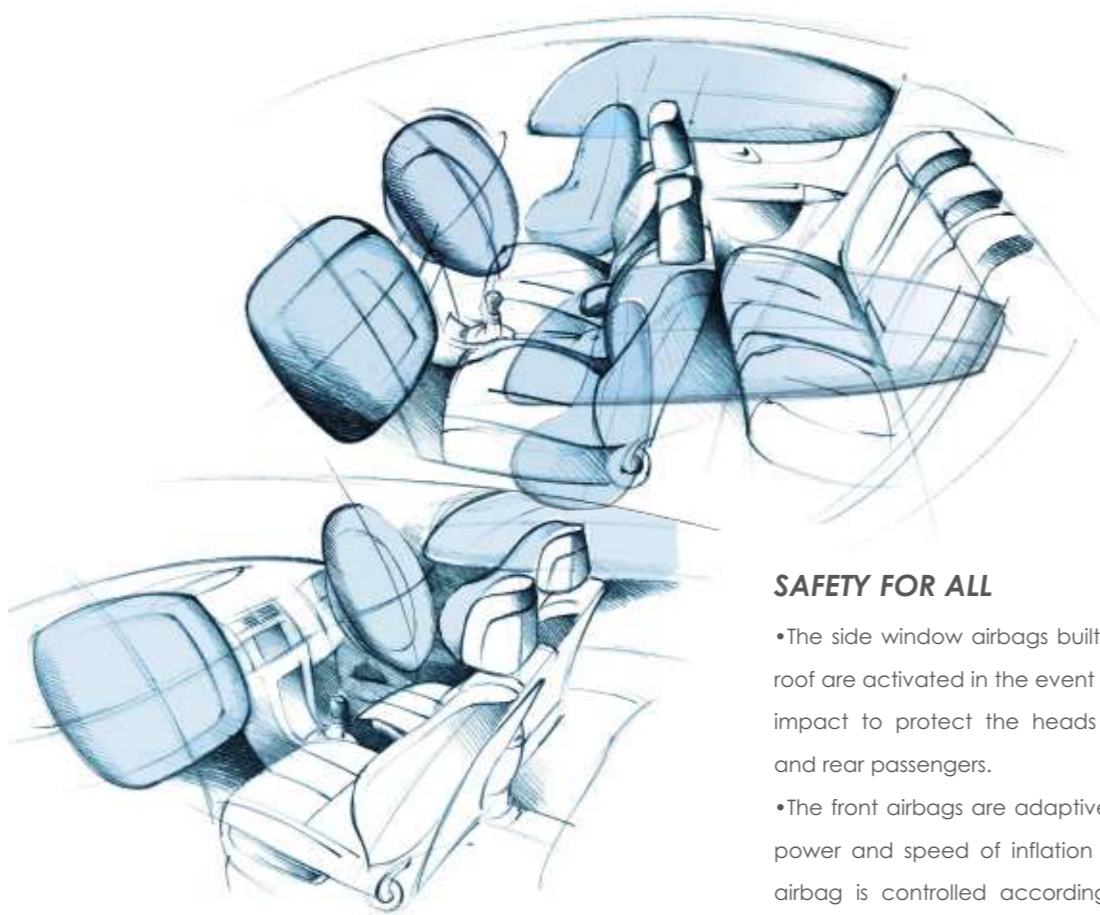


LANE DEPARTURE WARNING SYSTEM (LDWS):

***Always on
alert***

On the motorway, or other major roads at speeds above 50mph, the LDWS[◇] detects any crossing of a white line by means of infra-red sensors built into the front of the vehicle and directed towards the ground. If the vehicle drifts outside its lane without an indicator being on, the driver is warned by one of the vibrating devices built into the left and right sides of the seat. The vibrations are set off on the side corresponding to the direction of drift. In this way the driver can immediately take the necessary corrective action.





SAFETY FOR ALL

- The side window airbags built into the roof are activated in the event of a side impact to protect the heads of front and rear passengers.
- The front airbags are adaptive, ie. the power and speed of inflation of each airbag is controlled according to the severity of the impact. Moreover, thanks to the fixed centred controls steering wheel, the driver's airbag always deploys at the right angle.
- Lateral airbags are built into the front seats and are activated in the event of a side impact so as to move the occupant towards the middle of the passenger cell - away from the maximum impact zone - and thus reduce the effect of the impact.



•The side windows of the Citroën C4 are made of laminated acoustic glass[◇] for improved security and excellent sound insulation.



•The Citroën C4's five seats all have 3-point inertia reel seat-belts. There is a seatbelt 'unfastened' warning light for each one that comes up, on the translucent instrument display.

•The integral electrical child-safety system[◇] allows the opening controls for the rear doors and windows to be activated or deactivated from the driver's seat.



•Each of the front and rear electric windows[◇] has 'one-touch' operation with a built-in anti-pinch safety feature.



•The Citroën C4's high-frequency remote control plip can lock and deadlock all the vehicle's doors. It also activates the volumetric (interior surveillance) and perimetric (door and window surveillance) alarm[◇]. A 'Guide me home' function provides temporary illumination of the headlamps, eg. when parking in dark places.



Ecology and Performance

Best of both worlds

THE NEW EGS GEAR BOX

The new Electronic Gearbox System (E.G.S) brings two gearboxes together into one, to give the best of both worlds. It gives a fast and precise manual gearbox controlled by paddles or a gear lever alongside a smooth and efficient automatic transmission.

The E.G.S gearbox has been developed as a completely new gearbox, cleverly designed to deliver the key benefits of a quick and smooth transmission, fuel efficiency and a reduction in emissions.



There is a choice of 6 petrol versions and 5 diesel:

- The 90hp 1.4i petrol engine or 1.6HDi 92hp diesel for comfort and low fuel consumption in town use.
- The 110hp 1.6i petrol (manual or automatic) and 1.6HDi 110hp diesel, (manual or E.G.S), engines for an optimum power/fuel consumption ratio, both in town and on the open road.
- The 143hp 2.0i petrol, 143hp 2.0i petrol automatic or 138hp 2.0HDi diesel, (manual or automatic) engines where the priority is torque and acceleration over long distances. In particular, the 2.0HDi 138hp diesel engine performs especially well even in low gear and its 6-speed manual gearbox allows you to enjoy the dynamism of its 138 horse-power to the full. The gear ratios are near perfect and give a very precise drive with 100% effective immediate acceleration and power always in reserve. This remarkable flexibility gives you a hugely pleasurable yet comfortable drive which will satisfy both the most demanding car lover and the driver looking primarily for calmness and safety in all conditions.
- And finally the dynamism of the 180hp 2.0i petrol engine provides exceptional performance for the sportier driver.



CO₂ and fuel consumption emissions

ENGINE	CO ₂ EMISSIONS*	URBAN**	EXTRA URBAN**	COMBINED**
1.4i 16V 90hp Hatchback/Coupé	153	8.7 (32.5)	5.2 (54.3)	6.4 (44.1)
1.6i 16V 110hp Hatchback/Coupé	169	9.5 (29.7)	5.7 (49.6)	7.1 (39.8)
1.6i 16V 110hp Automatic Hatchback	180	10.6 (26.6)	5.8 (48.7)	7.6 (37.2)
2.0i 16V 143hp Hatchback/Coupé	182	10.7 (26.4)	5.8 (48.7)	7.6 (37.2)
2.0i 16V 143hp Automatic Hatchback	193	11.7 (24.1)	6.1 (46.3)	8.1 (34.9)
2.0i 16V 180hp Coupé	200	11.7 (24.1)	6.5 (43.5)	8.4 (33.6)
<hr/>				
1.6HDi 16V 92hp Hatchback/Coupé	125	5.9 (47.9)	4.1 (68.9)	4.7 (60.1)
1.6HDi 16V 110hp Hatchback/Coupé	128	6.1 (46.3)	4.0 (70.6)	4.8 (58.8)
1.6HDi 16V 110hp DPFS† EGS†† Hatchback/Coupé	120	5.8 (48.7)	3.8 (74.3)	4.5 (62.8)
2.0HDi 16V 138hp 6-speed Hatchback/Coupé	145	7.2 (39.2)	4.6 (61.4)	5.5 (51.4)
2.0HDi 16V 138hp DPFS† Automatic 6-speed Hatchback	175	9.1 (31.0)	5.1 (55.4)	6.6 (42.8)

* Figures shown in g/km ** Figures shown in litres/100km (mpg) †DPFS Diesel Particulate Filter System
 ††EGS Electronic Gearbox System Note: all engines meet Euro IV emission standards



Life on-board

Elegant, seductive, high performing yes, but the Citroën C4 is also, and perhaps above all, practical and pleasant to be in. Its living space has been specially designed to offer the very best in travelling comfort. The remarkable amount of legroom for rear passengers being a particular feature, even

when the front seats are pushed back as far as they will go. There is a huge number of storage spaces - no less than 22[◇] of them inside the car, plus a large boot which can be "compartmentalised"[◇] in to 4 sections.



•The front armrest[◊] slides out and is retractable. It can also be used for storage or have a 5-CD auto-changer[◊] fitted.

•Storage areas or 'push/pull' drawers[◊] at both ends of the dashboard can be used to store money or credit cards.



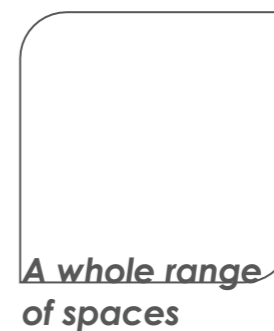
•A drawer under the front passenger seat is practical and discreet - it can be used to keep items readily accessible in a place where they cannot be seen.



•Both of the front interior door panels feature 2 storage areas.



•A system of partitions[◊] built into the rear of the boot can be used to create made-to-measure compartments to keep small or delicate objects separate.



A whole range of spaces



•The rear seat of the Citroën C4 can be folded 2/3 - 1/3 - both seat cushion and backrest. Each part of the backrest and the cushion can be folded down to free up extra space. Modularity goes even further: the rear seat base can be removed so that the boot can be loaded right up to the front seat.



Colour Galore



15" 'Aromanche' steel wheels (VT/LX models) 16" 'Radicale' alloy wheels (VTR/SX models)



17" 'Resolfen' alloy wheels (VTR+/VTS models) 17" 'Toka-Toka' alloy wheels (Exclusive models)



Black 'Woven' Mixi Cloth



Grey '3D Simailla' mesh Cloth



Grey 'Camcill' velour



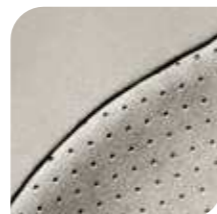
Black/Grey 'Mesh 3D X-Ray' Cloth



Black 'Mesh 3D X-Ray' Cloth/Grey Alcantara®



'Mistral' perforated Alcantara®/Velour Tabre



'Matinal' perforated Alcantara®/Velour Tabre

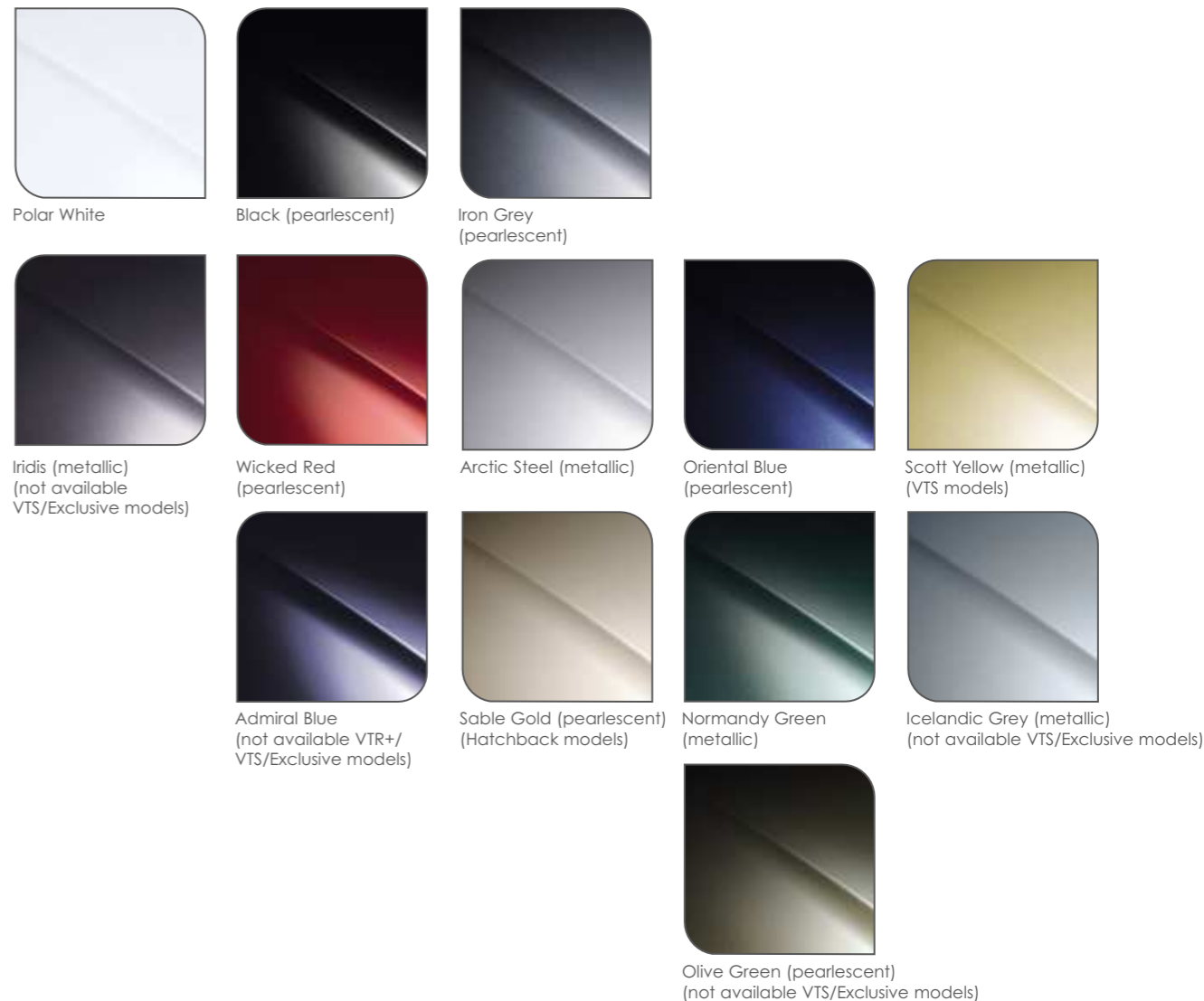


Optional 'Mistral' leather



Optional 'Wadibis' leather

With a choice of 13 body colours and 9 interior trims (including optional leather), the Citroën C4 shows just how varied it can be.*



5 DOOR HATCHBACK				
Interior	LX	SX	VTR+	Exclusive
Seat trim*: Black 'Woven' Mixi	s	-	-	-
Ambience: Mistral	s	-	-	-
Seat: Comfort	s	-	-	-
Seat trim*: Grey 'Camcill' velour	-	s	-	-
Ambience: Mistral	-	s	-	-
Seat: Comfort	-	s	-	-
Seat trim*: Black/Grey 'Mesh 3D X-Ray' Cloth	-	-	s	-
Ambience: Mistral	-	-	s	-
Seat: Sport	-	-	s	-
Seat trim*: Perforated Alcantara®/Velour Mistral or Matinal	-	-	-	s
Ambience: Mistral	-	-	-	s
Ambience: Matinal	-	-	-	s
Ambience: Wadibis	-	-	-	s
Seat: Comfort	-	-	-	s
Seat trim*: Mistral or Wadibis Leather	-	-	option	option
Ambience: Mistral	-	-	s	s
Ambience: Wadibis	-	-	s	s
Seat: Sport	-	-	s	s

COUPÉ				
Interior	VT	VTR	VTR+	VTS
Seat trim*: Black 'Woven' Mixi	s	-	-	-
Ambience: Mistral	s	-	-	-
Seat: Comfort	s	-	-	-
Seat trim*: Grey '3D Simailla' mesh Cloth	-	s	-	-
Ambience: Mistral	-	s	-	-
Seat: Sport	-	s	-	-
Seat trim*: Black/Grey 'Mesh 3D X-Ray' Cloth	-	-	s	-
Ambience: Mistral	-	-	s	-
Seat: Sport	-	-	s	-
Seat trim*: Black Mesh 3D X-Ray/ Grey Alcantara®	-	-	-	s
Ambience: Mistral	-	-	-	s
Seat: Sport	-	-	-	s
Seat trim*: Mistral or Wadibis Leather	-	-	option	option
Ambience: Mistral	-	-	s	s
Ambience: Wadibis	-	-	s	s
Seat: Sport	-	-	s	s

* Exterior body colour/interior seat trim combination please refer to the current Citroën C4 Technical and Product information booklet.

Citroën care for car and driver

A network of Citroën New Car Dealers, Authorised Repairers and Parts Distributors are equipped and trained to meet the needs of today's Citroën customer.

Dealers can offer advice on vehicle funding; via Citroën Contract Motoring with packages such as Contract Hire, Finance Lease or Lease Purchase for Business Users, or via Citroën Financial Services with Hire Purchase or Elect 3 Personal Contract Purchase for Retail buyers.

In addition Authorised Repairers have a team of technicians skilled in the care and maintenance of Citroën products.

Citroën Elect 3

With the Elect 3 Personal Contract Purchase Scheme, you decide on the model which best suits your motoring needs, then set your preferred contract period and anticipated annual mileage. At the end of the contract period you have the added flexibility of part exchanging the car for another new Citroën, purchasing the vehicle or simply returning it.

Citroën DRIVENOW Personal Lease

DRIVENOW Personal Lease is an innovative new way to enjoy a new Citroën without the cost of ownership. With Citroën Assistance, Replacement of Wear & Tear Parts and Extended Warranty as standard for the full term of the agreement, most unforeseen costs that can prove difficult to budget for are taken care of. With leasing which can be arranged for a period of up to 4 years, DRIVENOW Personal Lease offers you a hassle free motoring solution.

Citroën Fleet and Business Sales

All Citroën New Car Dealers are dedicated to meeting the specialist needs of both the fleet and business buyer. Their comprehensive service can include advice on important business vehicle decisions, such as alternative acquisition methods, disposal of existing cars and vans, priority servicing and much more. In short, their expertise aims to provide a 'total transport solution' for all your fleet or business vehicle needs. If you would like to contact Citroën direct for further information, please call Citroën Fleet Connect on 08457 940 940. Or look us up at: <http://www.citroen.co.uk/fleet>

Citroën ADVANTAGE

Whether you intend to keep your new Citroën for more than 3 years or simply plan to drive more than 60,000 miles during its first three years, Citroën ADVANTAGE is an extended warranty which offers a similar level of cover to Citroën's new vehicle warranty. For more information, please contact your Citroën Dealer or call 0800 587 9808.

Citroën ADVANTAGE is underwritten by Pinnacle Insurance plc. Conditions apply.

Citroën MAINTENANCE

What if you could relax, safe in the knowledge that for a small one off fee or a low monthly payment, you could benefit from routine servicing, replacement of wear & tear items and roadside assistance? With Citroën MAINTENANCE you can. Simply choose the period & select the mileage and you too could benefit from peace of mind motoring on your terms. For information, contact your Citroën New Vehicle Dealer or Citroën Authorised Repairer.

Citroën ASSISTANCE

In response to a free telephone call, Citroën ASSISTANCE brings rapid expert roadside assistance to you in an emergency. It comes free of charge for a full year and operates 24 hours a day in all parts of the UK and Europe. Services include nationwide recovery for both car and passengers, a home call service, replacement vehicle, hotel accommodation and vehicle storage if required. Citroën ASSISTANCE applies to all vehicles registered from 01/01/05. Please note, Citroën ASSISTANCE only applies to incidents covered by the new vehicle warranty. Full details are available on request from Citroën UK via cukcustomer_relations@citroen.com

Comprehensive Warranty

Every new Citroën car offers the benefit of a 3 year* warranty package, plus a 12 year anti-corrosion** warranty and a 3 year paint warranty.

Citroën INSURANCE

Citroën INSURANCE*** is the only motor insurance designed exclusively for Citroën drivers and offers tailored cover at a competitive price. When the time comes to renew your insurance cover, call Citroën Insurance on 0870 024 2725.

Lines open 8am – 8pm weekdays, 9am-5pm Saturdays. Calls may be recorded.

Internet

The Citroën Website contains full information on all Citroën products and offers available in the UK, together with details of our environmental and recycling policies. The site address is: <http://www.citroen.co.uk> You can contact Citroën directly via cukcustomer_relations@citroen.com

* 2 years' manufacturer's warranty. No-fee customer option of 1 year's Dealer provided extended warranty, only on cars sourced from Citroën UK Limited. Note: dealer provided warranty is limited to 60,000 miles for cars and 100,000 miles for light commercial vehicles.

** Against all internal to external perforation to bodywork or underbody on condition the car undergoes an inspection by a Citroën franchised Dealer every two years from its fourth anniversary.

*** Citroën Insurance is arranged by Banque PSA Finance and underwritten by UK Insurance Limited. Conditions apply.

Full details available on request.

Credit subject to status and to over 18's only. A guarantee may be required. Written quotations available on request from Citroën Financial Services, Quadrant House, Princess Way, Redhill, Surrey RH1 1QA. Citroën Financial Services is a trading name of Banque PSA Finance. Telephone calls may be recorded or monitored for training or quality purposes.

∅Please refer to current Citroën C4 Product and Technical Information Booklet for full specification details.

NOTE: As Citroën vehicles are marketed in the EU, their specifications may vary from one country to another. For details relating to the specification of equipment for each model in the Citroën range, please refer to the "Product and Technical Information Booklet", or ask for information at your Citroën New Vehicle Sales Dealer.

This document concerns only those vehicles marketed in the EU. Information on the models and their features correspond to the specifications at the date of publication of this document; they cannot be considered as contractual. Citroën reserves the right to modify the features and specifications of the models presented, without prior notice and without any obligation to update this document.

The bodywork colours shown are for information only, as the printing techniques do not allow the colours to be faithfully reproduced. If, despite the care taken in producing this catalogue, you think there is an error, please do not hesitate to contact us, directly via cukcustomer_relations@citroen.com.

Automobiles Citroën confirms that, in accordance with the provisions of the EEC directive no. 2000/53/EC of 18 December 2000 relating to End of Life Vehicles, that it has achieved the objectives set by the latter and that recycled materials are used in manufacturing the products that it markets.

CITROËN UK LIMITED, 221 BATH ROAD, SLOUGH SL1 4BA. FREEPHONE: 0800 262262

CITROËN prefers TOTAL

K10633

