

 **MERCURY TOPAZ**



**1993**





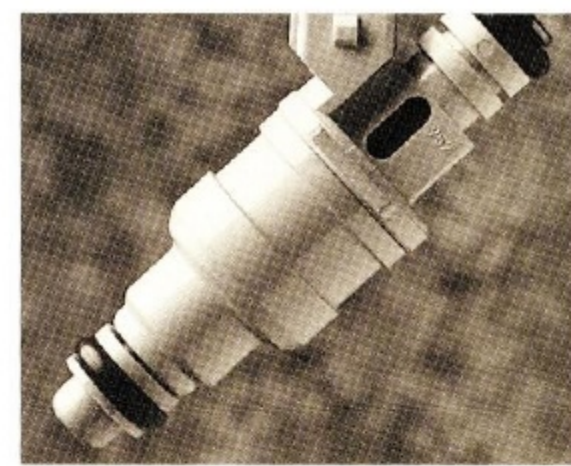
*When it rains, it doesn't always pour. Which is why Topaz has standard interval wipers which adjust to the perfect wiping speed whether you're in a drizzle or a cloudburst.*



*You may not expect to find dual power remote mirrors on cars in this price range. Yet they're at your convenience with Topaz.*



*A cup holder in the center console provides a convenient resting place for a favorite beverage.*



*Timing is everything—which is why Topaz includes sequential multi-port electronic fuel injection (SEFI) which places a precise amount of fuel in each cylinder at just the right moment for optimal efficiency and performance.\**

\*See EPA statement on back cover.



*Topaz' front and rear bumpers are successfully tested up to 5 mph, which is twice the speed that federal law requires.*



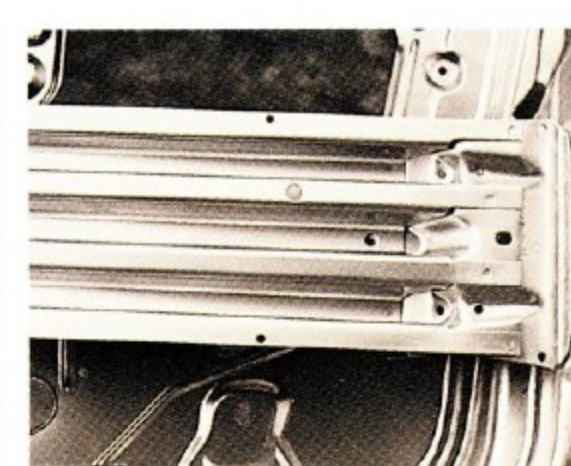
*Child-proof door locks prevent curious little hands from unintentionally opening rear doors.*



*Every Topaz includes three-point lap/shoulder safety belts for rear outboard passengers.*



*Crumple zones in the front and rear of every Topaz are engineered to collapse in an orderly manner, reducing the force of an impact before it reaches the passenger compartment.*



*Inside each Topaz door is a heavy-gauge protective steel beam.*

*Topaz GS Sedan pictured in Bimini Blue Clearcoat Metallic. Some features shown may be optional.*

**TOPAZ GS. A CAR THAT SIMPLY DOES EVERYTHING WELL.**

A big idea is sometimes a collection of smaller ones. Ingenious little triumphs of design. Unseen but inspired solutions to vexing problems. A sudden insight that enables things to be done differently. Better. Combined, they can become a larger idea that adds to the ease and comfort of our lives.

Mercury Topaz GS is like that. It's a car full of fresh, uncompromised, intelligent ideas. And that may well be what makes Topaz a rarity among today's abundance of automobiles. It's a car that simply does everything well.

It handles families with an easy assurance. And it handles a tight turn the same way. It treats budgets with care and doesn't complain about the weather. And it's built with a concern for safety that lends peace of mind to both driver and passengers.

Unlike some cars, you'll grow to like Topaz GS even more after the novelty wears off. And that's a big idea all by itself.



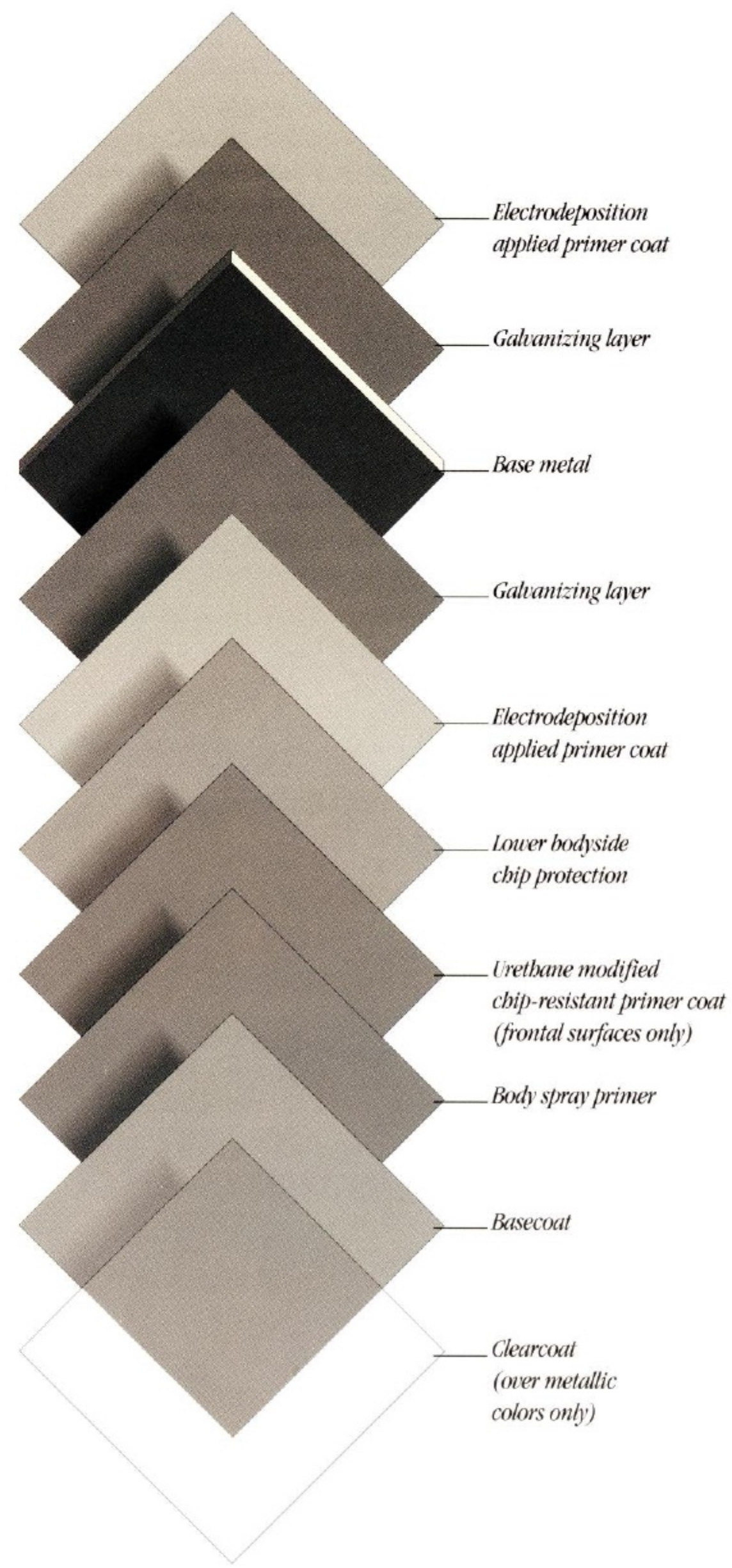
*The Topaz GS sedan interior is pictured here with Crystal Blue cloth upholstery. Some features shown may be optional.*

Front seat belt not shown in order to provide a clear view of vehicle interior. Always wear the shoulder and separate lap belt.



*A driver-side air bag Supplemental Restraint System is available on Topaz models equipped with the 2.3L engine and automatic transaxle. It's designed to work in conjunction with a properly worn safety belt, which means it can't do its job if you don't do yours first. Buckle up.*





A dedication to extending your Topaz' life and good looks extends far beneath its surface.

To help protect Topaz against rust and corrosion, two-sided galvanized steel is used on all major exterior body panels except the roof.

During Topaz' sophisticated multi-step paint process, the unibody "shell" is dipped in a huge tank where a corrosion-protective primer coat is electrostatically applied. Then the nose, front

fenders and other areas where paint chipping is most likely to occur are treated with a second chip-resistant primer coating.

The finish over all this protection is well worth guarding. Rich color basecoats and, in many cases, clearcoats are applied with state-of-the-art equipment in a meticulously clean facility. Thorough inspections are conducted to produce a finish that is consistently smooth and beautiful.



Optional air conditioning helps you keep cool when the mercury rises.



PEP 354A sounds even better when you discover it includes this optional AM/FM stereo radio with cassette and four speakers.



Topaz GS Coupe includes a 5-speed manual transaxle.

**A LOT OF SUBSTANCE GOES INTO EVERY TOPAZ—BUT YOU CAN ALWAYS ADD MORE.**

Whether you choose the Topaz GS Coupe or the GS Sedan, you're getting a car that's loaded with intelligent ideas that make it fun to drive and practical to own.

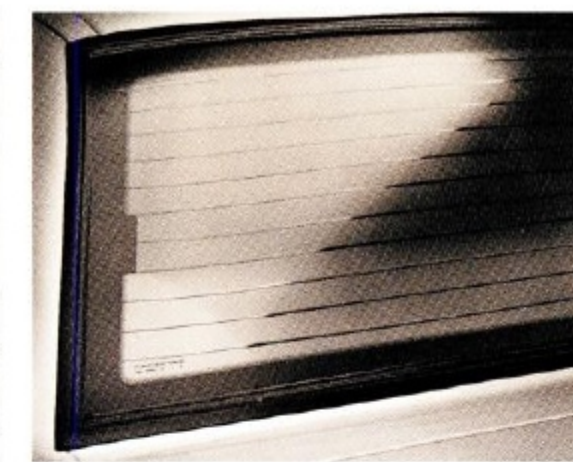
So you could drive away in a new Topaz GS without adding a thing and be quite happy. However, there are a number of options you can choose that will add even more to its comfort, performance, and appearance as well as its entertainment.



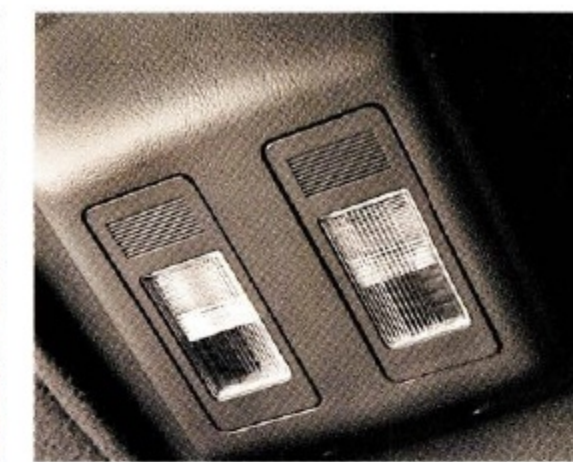
You may not think much about a wiper control when you use it. You shouldn't have to if it's designed right. Which is precisely why this interval wiper/washer control is large, so it's easy to handle, and simple, so you can operate it without having to glance down from the road. You might say it's a user-friendly control. And Topaz is loaded with them.



This optional luggage rack lets you carry things on top of the trunk that you can't fit in it.



The advantages of PEP 354A are easily seen—especially on cold winter mornings—since this optional rear window defroster is part of the package.



Optional map lights provide an excellent source of direct reading light for the driver and front passenger.



Optional remote releases for the trunk and fuel-filler door give the driver a touch of convenience.



Sometimes you need something to lean on. That's why this optional front center armrest is included in PEP 354A.

To make it easy and economical to order your Topaz the way you want it, the most popular options are grouped together in Preferred Equipment Packages (PEPs). Choosing options this way is more convenient than ordering them separately, and offers price savings compared to ordering them individually.

One popular grouping for the Topaz GS Coupe, PEP 354A, is highlighted here. For a more thorough listing of what's included in a number of Topaz Preferred Equipment Packages, consult the options/specifications pages in the back of this brochure.

Topaz GS Coupe pictured in Bright Red. Some features shown may be optional.







DIMENSIONS (in inches)		Wheelbase	Overall length	Overall height	Overall width	Track, front/rear	Headroom, front/rear	Legroom, front/rear	Shoulder room, front/rear	Hiproom, front/rear
Two-door	99.9	176.7	52.8	68.3	54.9/57.6	37.5/36.8	41.5/36.0	53.9/54.0	48.8/51.8	
Four-door	99.9	177.0	52.9	68.3	54.9/57.6	37.5/37.0	41.5/36.0	53.9/53.3	48.8/51.0	

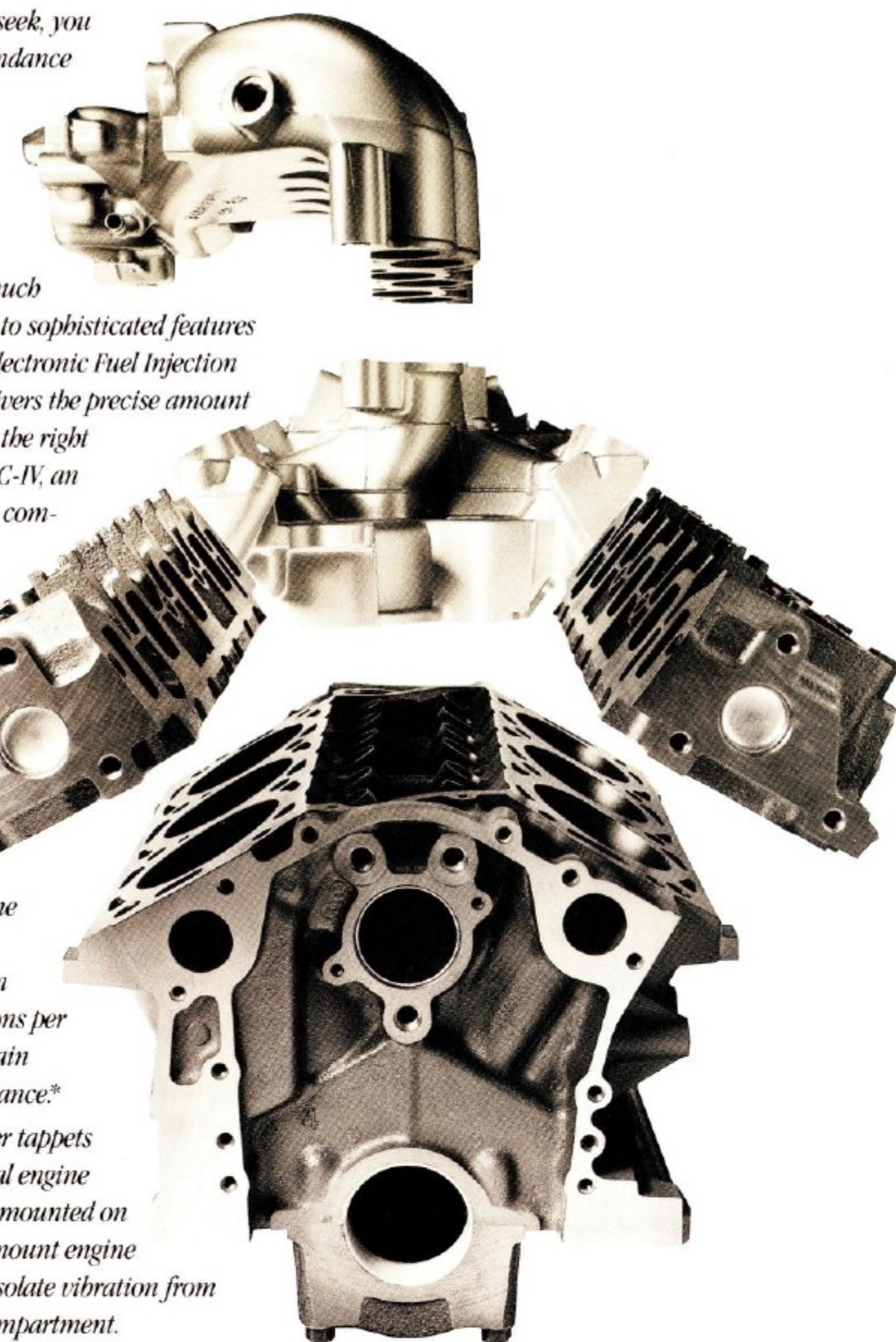
ENGINES	Type	Displacement	Horsepower (SAE net)	Torque (SAE net)	Fuel delivery	Compression ratio	Engine control
Standard	HSC In-line 4-cylinder	2.3 liters	96 @ 4200 rpm	126 lb.-ft @ 2600 rpm	Sequential multi-port electronic fuel injection	9.0:1	EEC-IV, electronic engine control
Optional	V-6	3.0 liters	130 @ 4800 rpm*	150 lb.-ft @ 3000 rpm*	Sequential multi-port electronic fuel injection	9.3:1	EEC-IV, electronic engine control

If it's power you seek, you can get it in abundance with Topaz' optional 3.0-liter, 130-hp V-6 engine.

And this power won't cost you much in return thanks to sophisticated features like Sequential Electronic Fuel Injection (SEFI) which delivers the precise amount of fuel at exactly the right moment, and EEC-IV, an on-board engine computer with the capacity to continuously

monitor specific engine functions at a rate of more than 312,000 operations per second to maintain optimal performance.\* This V-6 has roller tappets to reduce internal engine friction, and it's mounted on four-point dropmount engine mounts to help isolate vibration from the passenger compartment.

\*See EPA statement on back cover.



FUNCTIONAL FEATURES	4-DOOR	2-DOOR
3.0-liter V-6 engine	0	0
2.3-liter HSC engine	S	S
Five-speed manual transaxle	S	S
Three-speed automatic transaxle	0	0
Maintenance-free battery	S	S
Electronic voltage regulator	S	S
Self-adjusting clutch linkage	S	S
Power-assist rack-and-pinion steering	S	S
Tinted glass	S	S
Side window demisters	S	S
Rear child-proof locks	S	0
Electric rear window defroster	0	0
Driver air bag Supplemental Restraint System**	0	0
Engine block heater	0	0

EXTERIOR FEATURES	4-DOOR	2-DOOR
Aero halogen headlamps	S	S
Five-mph impact bumpers	S	S
Corrosion protection including pre-coated 2-sided galvanized steel, Electrodeposition applied primer and electrostatically applied paint	S	S
Lower bodyside chip protection	S	S
Dual power remote mirrors	S	S
Rear decklid luggage rack	0	0
Front end cover	A	A
Molded splash guards	A	A
Multi-sport roof rack (ski, bicycle, water sports)	A	A
Remote keyless entry (requires power lock group)	A	A

INTERIOR COMFORT AND CONVENIENCE FEATURES	4-DOOR	2-DOOR
Power flow-through ventilation	S	S
Four-speed heater/defroster	S	S
Front and rear floor mats	S	S
Trunk and footwell illumination	S	S
Interval windshield wipers	S	S
Digital clock	S	S
Remote decklid release	0	0
Remote fuel-filler door release	0	0
Light group: Includes engine compartment light, overhead map lights and headlamps on chime	0	0

S Standard feature    0 Optional feature    A Dealer-installed accessory

CAPACITIES	Cargo volume	Fuel	Oil (includes filter)	Engine coolant	Base curb weight	BRAKES	Brake swept area	STEERING
Two-door	13.2 cu. ft.	15.9 gal.	2.3L = 5 qt.	2.3L = 8.4 qt.	2,531 lb.	Front: 9.2-inch disc Rear: 8.0-inch drum	150 sq. in.	Power-assist rack-and-pinion with 18.3:1 overall ratio on center
Four-door	12.7 cu. ft.	15.9 gal.	3.0L = 4.5 qt.	3.0L = 10 qt.	2,588 lb.		67.2 sq. in.	Dual hydraulic (diagonally linked front to rear) with power assist

TRANSEXLES	SUSPENSION
Manual (Std.)	Front
Automatic (Opt.)	Rear

INTERIOR COMFORT AND CONVENIENCE FEATURES (continued)	4-DOOR	2-DOOR
Removable cupholder	S	S
Cargo tiedown net	A	A
Tilt steering wheel	0	0
Fingertip speed control	0	0
Power lock group: Includes door locks, fuel-filler door and decklid releases	0	0
Power windows	0	0
Air conditioner	0	0
Low-back individual reclining cloth front seats	S	S
Six-way power driver's seat	0	0
Remote anti-theft system	A	A

SOUND SYSTEMS	4-DOOR	2-DOOR
Electronic AM/FM stereo with four speakers (may delete for credit)	S	S
Electronic AM/FM stereo with cassette and four speakers	0	0
Premium Sound—amplifier and premium speakers	0	0

INSTRUMENTATION	4-DOOR	2-DOOR
Analog instrumentation with speedometer, tachometer, engine coolant temperature gauge, fuel gauge and trip odometer	S	S

WHEELS AND TIRES	4-DOOR	2-DOOR
P185/TOR14 black sidewall, all-season, steel-belted radial tires	S	S
P185/TOR14 black sidewall, performance steel-belted radial tires	0	0
P185/TOR14 white sidewall, performance steel-belted radial tires	0	0
Mini spare tire	S	S
Turbine-style wheel covers	S	S
Polycast wheels	0	0
14" geometric aluminum wheels	0	0
14" seven-spoke aluminum wheels	0	0

COMFORT/CONVENIENCE GROUP	4-DOOR	2-DOOR
Includes front center armrest, light group, locking fuel-filler door with remote release and remote decklid release	0	0

\* Manual transaxle: automatic transaxle (V-6 HP = 135 @ 4800 rpm. Torque = 150 @ 4250).  
 \*\* Available only with 2.3L automatic. Not available with tilt steering wheel or fingertip speed control.  
 † Based on official MVMA specifications.  
 For more information on available accessories see your Lincoln-Mercury Dealer.  
 Following publication of this catalog, certain changes in standard equipment, options, prices and the like, or product delays, may have occurred which would not be included in these pages. Your Lincoln-Mercury dealer is your best source for up-to-date information.  
 Lincoln-Mercury Division reserves the right to change product specifications at any time without incurring obligations.

PREFERRED EQUIPMENT PACKAGES	352A	353A	354A
Electric decklid and fuel-filler door releases	•	•	•
Light group	•	•	•
Automatic transaxle	•	•	•
Manual air conditioner	•	•	•
Front center armrest	•	•	•
Electric rear window defroster	•	•	•
Power lock group	•	•	•
Power windows***	•	•	•
Tilt steering wheel	•	•	•
AM/FM cassette stereo	•	•	•
Fingertip speed control	•	•	•
Deluxe luggage rack	•	•	•
Seven-spoke aluminum wheels	•	•	•

MODEL/BODYSTYLE AVAILABILITY	TOPAZ GS
COLOR AVAILABILITY†	2-DOOR 4-DOOR
Black	S S
Light Blue	S S
Oxford White	S S
Bright Red	S S
Twilight Blue Clearcoat Metallic	0 0
Mocha Frost Clearcoat	0 0
Bimini Blue Clearcoat Metallic	0 0
Cayman Green Clearcoat Metallic	0 0
Electric Red Clearcoat Metallic	0 0
Caribbean Green Clearcoat Metallic	0 0
Opal Grey Clearcoat Metallic	0 0
Silver Clearcoat Metallic	0 0

INTERIOR COLORS
Crystal Blue
Mocha
Opal Grey
Ruby



Turbine-style wheel cover



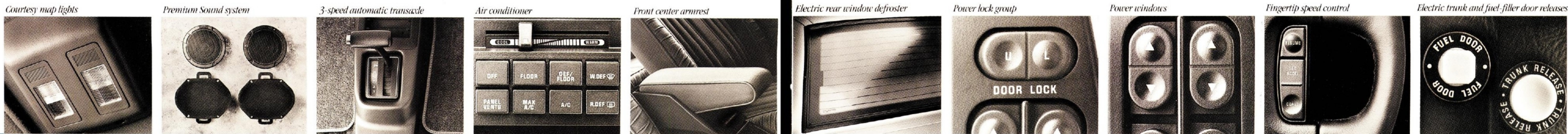
Optional polycast wheel



Optional 14-inch, 7-spoke cast aluminum wheel



Optional 14-inch geometric aluminum wheel





Chances are, you started your day by starting your car.

Tens of millions of us do. Every day. All over the country. Surely, nothing we own is more closely and constantly intertwined with our lives than the automobile.

At Lincoln-Mercury we never lose sight of the fact that our products go on to play a major part in the lives of people. That's why we're dedicated to bringing you cars that will not only serve you faithfully but also will help make your life more enjoyable.

Stop by your Lincoln-Mercury dealer and see what we've been doing.

Capri



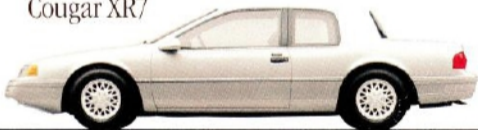
Tracer



Topaz



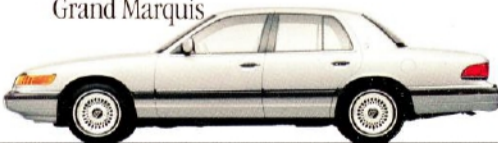
Cougar XR7



Sable



Grand Marquis



Villager



DEMAND GENUINE FORD COLLISION REPAIR PARTS



Genuine Ford sheet metal and plastic replacement collision parts, such as hood, doors, fenders and bumper components, are the right choice should you be involved in an accident. Genuine Ford collision parts are equal in fit, finish, structural integrity and corrosion protection to original parts. Ford collision parts are the same as those used on new vehicles which are certified to meet Federal Motor Vehicle Safety Standards for crash worthiness. All Ford sheet metal replacement parts are covered by the exclusive Ford Lifelong Sheet Metal Guarantee. Beware of imitations; insist that your insurer authorize genuine Ford collision parts.

**Motorcraft**  
QUALITY PARTS

Genuine Ford and Motorcraft original equipment replacement parts are engineered and manufactured to Ford's highest specifications. They're your best assurance of quality and long-term satisfaction because these replacement parts meet the same high standards as those installed in production.



Ford Credit offers advantageous financing arrangements for qualified buyers, plus the convenience of making them right where you buy your car—at your Lincoln-Mercury dealer.

As an alternative to car ownership that may well suit your needs, there's Ford Credit's Red Carpet Lease Plan. Ask for the facts on leasing at your Lincoln-Mercury dealer.



The optional Ford Extended Service Plan covers selected components on new Mercury cars following the expiration of the vehicle's basic warranty. Most plans also provide rental reimbursement for covered warranty or ESP repairs. The cost is so moderate for the ESP protection offered that it could pay for itself the first time it is needed. Ask your participating Lincoln-Mercury dealer for complete details of the plans, which are available on cars sold and normally operated in the 50 United States and Canada.



*EPA statement: 1993 EPA mileage estimates were unavailable when this publication was printed. The 1993 Mercury Topaz, however, should post good mileage figures. Ask your Lincoln-Mercury dealer for the latest information.*

*Option availability: Options shown or described in this catalog are available at extra cost and may be offered only in combination with other options or subject to additional ordering requirements or limitations.*

 **All This And The Quality Of A Mercury.**

LINCOLN-MERCURY DIVISION 