

1 9 9 6



# THUNDERBIRD





**T**he 1996 Thunderbird. A new look and driving experience.



▲ *Thunderbird LX in Pacific Green Clearcoat Metallic. The hood and front fascia are new, as are the aerodynamic complex reflector halogen headlamps and parking lamps with clear lenses.*

The evolution of the Ford Thunderbird continues, with a new design that's highly refined in both looks and aerodynamics. With its fresh styling, performance and handling, comfortable interior and rich appointments, Thunderbird for 1996 remains the standard of driving enjoyment in its class of personal luxury coupes.



► *Thunderbird also features a refined rear fascia treatment, as well as new bodyside cladding with integral protective bodyside moldings.*

*Some equipment shown is optional.*





For those who take the pleasure of driving very seriously

Introducing the 1996 Ford Thunderbird with the new Sport Option. Thunderbird's handling and cornering are improved with the new Sport Option. A sport-tuned sophisticated 4-wheel independent suspension equipped with variable-rate coil springs, nitrogen gas-pressurized shock absorbers and stabilizer bars makes Thunderbird a more responsive driver's car.

► *Thunderbird LX in Black Clearcoat with the new Sport Option, which includes a sport-tuned handling suspension and low-profile 16" Touring Tires on unique cast aluminum wheels. Other equipment shown is also optional.*



# Luxury coupe style and comfort taken to a higher level



▲ Thunderbird comes with standard reclining bucket seats upholstered in luxury-level cloth. Leather seating surfaces are available.



▲ The comfortable 3-passenger rear seat provides the convenience of a center fold-down armrest.



▲ The electronic 4-speed automatic transmission is smooth and precise. The shift knob is covered in leather.



▲ Heat ducts are also a comfort feature that Thunderbird provides for rear seat passengers.



▲ The luxurious Thunderbird LX interior in Saddle. Some equipment shown, such as the leather seating surfaces, is optional.



# A definite bias toward the driver

► The instrument cluster features the clarity of analog gauges as well as a convenient trip odometer.



▲ Electronic speed control can change speed by 1 mph at the tap of a switch.



▲ Thunderbird's full-length console includes two convenient cupholders.

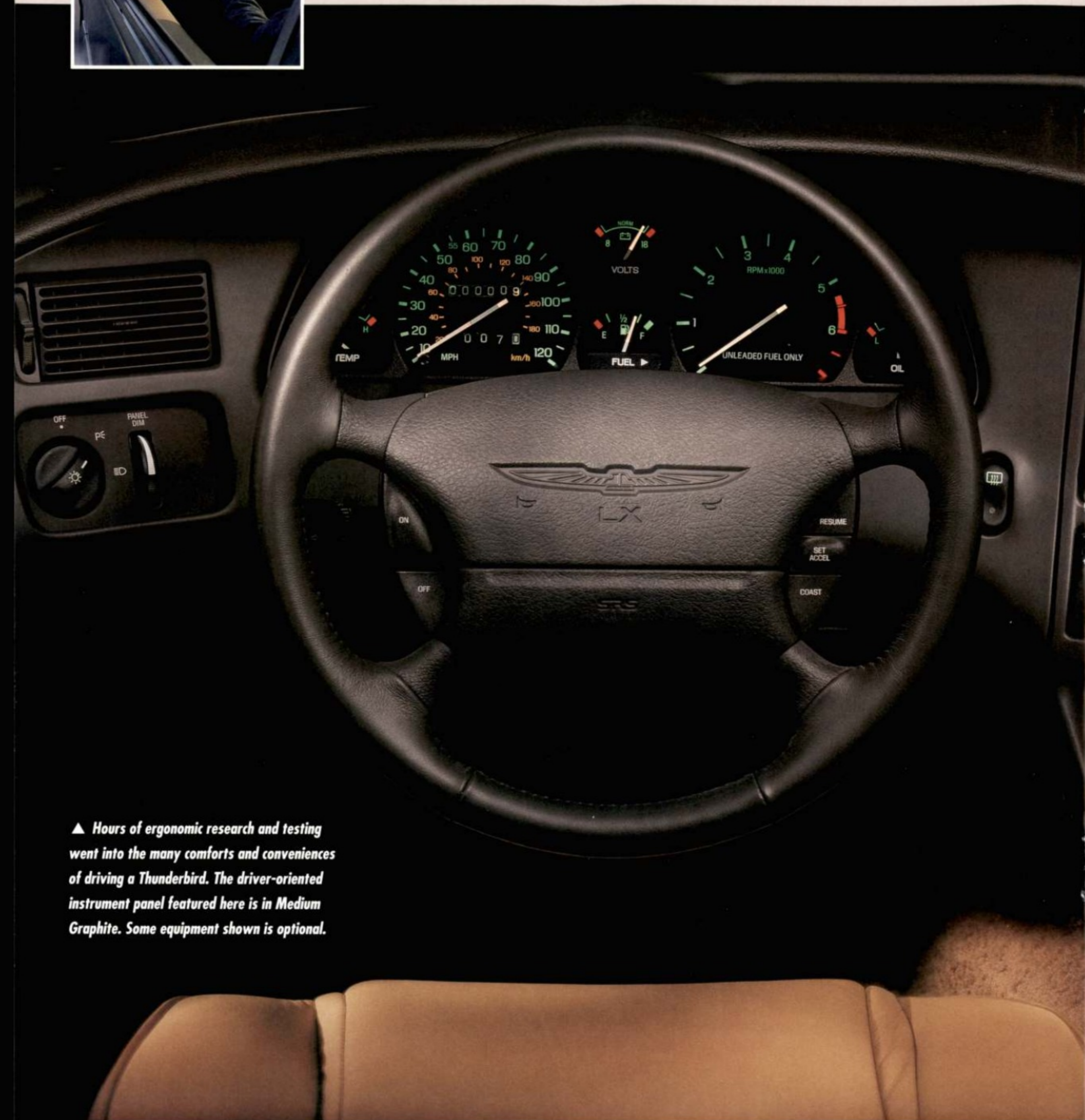


▲ 6-way power seat adjustment is available for the driver.



▲ For enhanced nighttime visibility, door panel controls are illuminated.

▲ Hours of ergonomic research and testing went into the many comforts and conveniences of driving a Thunderbird. The driver-oriented instrument panel featured here is in Medium Graphite. Some equipment shown is optional.



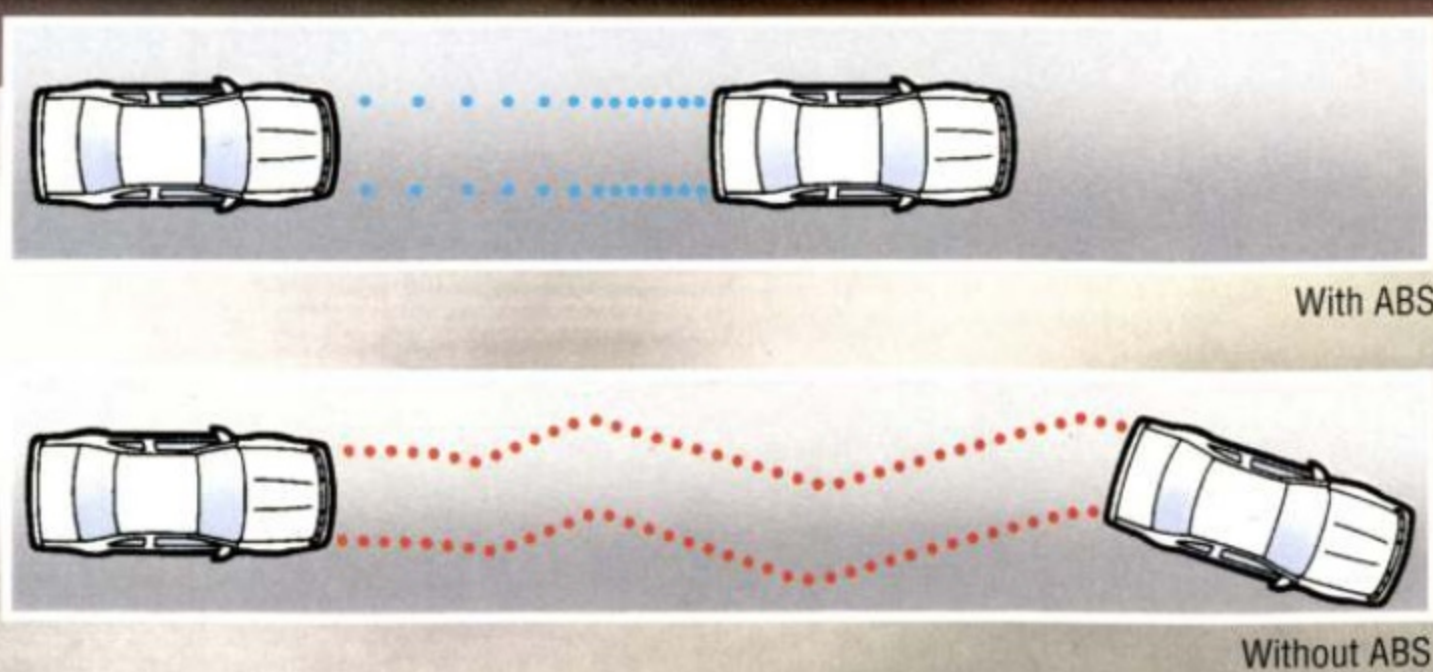


**P**ower and handling you'd expect. And then some.

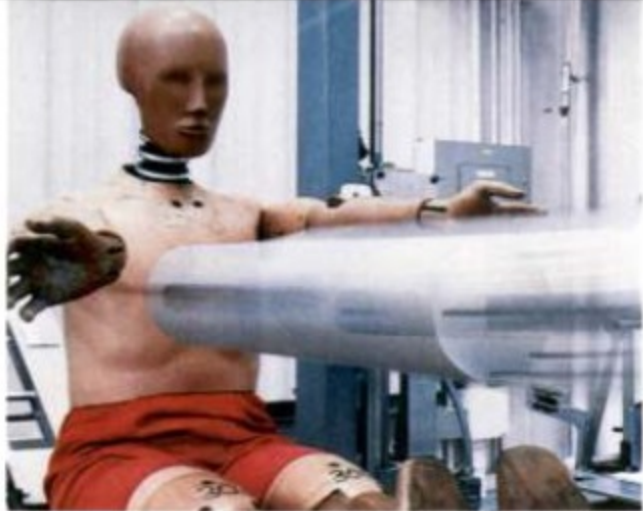
▲ Both the optional 4.6-liter SEFI V-8 and the standard 3.8-liter SEFI V-6 feature a computer-controlled sequential electronic fuel injection system (SEFI) that releases fuel precisely and efficiently to each cylinder in sequence with the engine's spark firing order. What's more, both engines can go 100,000 miles without a scheduled tune-up under normal driving conditions with routine fluid and filter changes. The 4.6-liter V-8 (shown above) with its overhead cam design is one of the most advanced engines in its class.



The optional computer-controlled 4-wheel disc anti-lock brake system helps provide smoother, straighter stops and greater steering control under most driving conditions.



◀ The 4-wheel independent suspension system has variable-rate springs, gas-pressurized shocks, and stabilizer bars. Thunderbird with the new Sport Option gets specially tuned handling components.

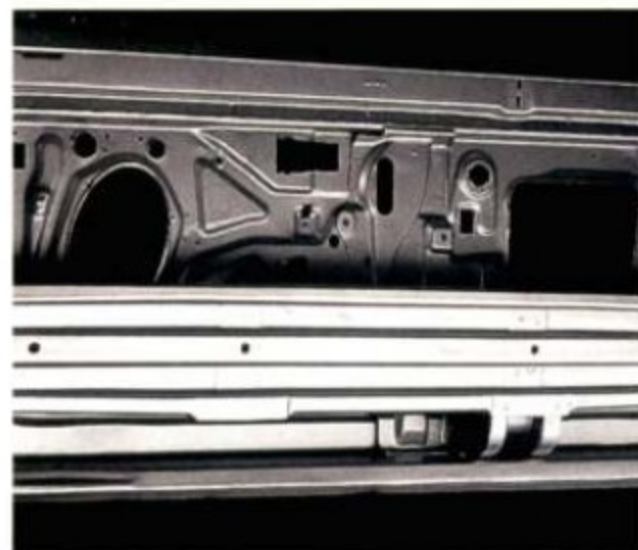


# Safety and security features to help protect you

Ford Thunderbird has many safety features designed to help provide protection, such as standard dual air bags to supplement the safety belts, side door intrusion beams, a strong unitized body with "crumple zones," plus available anti-lock brakes and electronic traction assist system.



▲ Standard dual air bags are among Thunderbird's many occupant protection features. Always be sure to properly wear your safety belts.



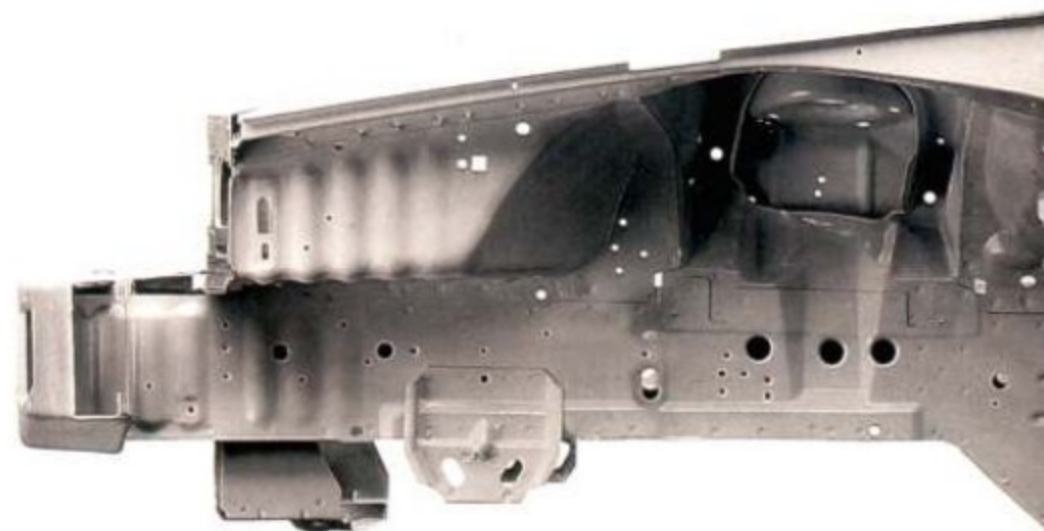
▲ Thunderbird provides the protective strength of side door intrusion beams.



▲ Optional Electronic Traction Assist improves traction when accelerating on loose or slippery surfaces at low speeds.



► For added security, there's an optional remote keyless entry system with illuminated entry feature which turns on the interior lights when the unlock button is pressed. To help safeguard your car as well, there's a new anti-theft system available.



▼ Thunderbird's unitized body has "crumple zones" that are specially designed to absorb the forces of an impact and help minimize damage to the passenger compartment.



► In the rear compartment are lap/shoulder safety belts for the outboard passengers.



▲ Full-width illuminated taillamps help make your Thunderbird more visible to other motorists, an especially helpful feature when weather conditions are adverse.

# Select personal options



▲ The optional power moonroof can be tilted up, or slid back into the roof panel by pressing an overhead switch.



▲ Enjoy the excellent clarity and performance of the available electronic AM/FM stereo radio with compact disc player. This system includes premium sound amplifier and speakers.



◀ Along with Ford's factory-installed options, there are dealer-installed accessories available, such as the cellular flip phone shown here.

# Thunderbird features and colors



## EXTERIOR FEATURES

|   | LX |
|---|----|
| Aerodynamic halogen headlamps/parking lamps with clear lenses | S  |
| Solar-tinted windshield, door and quarter window glass        | S  |
| Dual electric remote-control color-keyed mirrors              | S  |
| Full-width illuminated taillamps                              | S  |
| Lower bodyside cladding with integral bodyside moldings       | S  |
| Styled road wheel covers                                      | S  |
| 15" chrome wheels (require cast aluminum wheels)              | O  |

## COMFORT AND CONVENIENCE

|   |   |
|---|---|
| Full-length console with floor-mounted leather-wrapped shift knob and dual cupholders                         | S |
| Courtesy lights: map/dome, glove box, front ashtray, luggage compartment, engine compartment, driver footwell | S |
| CFC-free air conditioning   | S |
| Interval windshield wipers  | S |
| Luxury level door trim with courtesy lights, stowage bins   | S |
| Power windows and door locks with illuminated switches  | S |
| Remote decklid release  | S |
| Luxury weight cut-pile carpeting  | S |

|  |   |
|--|---|
| Analog performance instrumentation: fuel, engine temperature and oil pressure gauges, voltmeter and trip odometer  | S |
| Electronic speed control   | S |
| Tilt steering wheel  | S |
| Rear seat center armrest and heat ducts  | S |
| Luxury/lighting group: electronic semi-automatic temperature control air conditioning; autolamp on/off delay system; power antenna; dual illuminated visor vanity mirrors; integrated warning lamp module (warning lights for low fuel, low radiator coolant, low washer fluid and door ajar lights; plus switch for optional Electronic Traction Assist system in models so equipped); instrument panel courtesy light and engine compartment light | O |
| Power moonroof (with luxury/lighting group only)   | O |
| Front floor mats   | O |

## SOUND SYSTEMS

|   |   |
|---|---|
| Electronic AM/FM stereo/cassette player   | S |
| High-level audio system with premium electronic AM stereo/FM stereo/cassette player     | O |
| High-level audio system with premium electronic AM stereo/FM stereo/compact disc player | O |

## SEATING

|  |   |
|--|---|
| Luxury cloth reclining bucket seats                  | S |
| 6-way power driver's seat (included in package 157A) | O |
| Leather seating surfaces                             | O |

## SAFETY AND SECURITY

|   |   |
|---|---|
| Dual front air bag supplemental restraint systems; manual lap/shoulder belts                  | S |
| Lap/shoulder belt restraints for rear outboard passengers; lap belt for center rear passenger | S |
| Remote keyless/illuminated entry system   | O |
| Anti-theft system (requires remote keyless/illuminated entry)                                 | O |

## PERFORMANCE

|   |   |
|---|---|
| 3.8-liter SEFI V-8 (145 net hp)   | S |
| 4.6-liter SEFI V-8 (205 net hp)—available only in Package 157A  | O |
| Electronic 4-speed automatic overdrive transmission with overdrive lock-out feature   | S |
| On-board diagnostic (OBD) system  | S |
| Power front disc/rear drum brakes   | S |
| 4-wheel independent suspension with stabilizer bars, nitrogen gas-pressurized shock absorbers, and variable-rate springs  | S |
| Variable power-assist steering (speed-sensitive system with 4.6-liter V-8)  | S |
| Anti-lock brake system with 4-wheel disc brakes   | O |
| Electronic traction assist (requires anti-lock brakes)  | O |
| Traction-Lok axle   | O |
| Sport Option: P225/60R BSW Touring Tires on 16" aluminum wheels; modified stabilizer bars; revised spring rates and front lower arm bushings; and new shock absorber valving (requires 4.6-liter V-8) | O |
| P205/70R15 all-season tires   | S |
| P215/70R15 all-season tires (with aluminum or chrome wheels)  | O |
| 18-gallon fuel tank   | S |

S = Standard O = Optional

## PRODUCT CHANGES AND OPTIONS AVAILABILITY

Following publication of the catalog, certain changes in standard equipment, options, prices and the like, or product delays, may have occurred which would not be included in these pages. Your Ford Dealer is your best source for up-to-date information.

Ford Division reserves the right to change product specifications at any time without incurring obligations.

Options shown or described are available at extra cost and may be offered only in combination with other options or subject to additional ordering requirements or limitations.



▲ From left to right: 15" styled road wheel cover (standard); 15" cast aluminum wheel (included in Preferred Equipment Packages); 16" aluminum wheel (included in Sport Option); and 15" chrome wheel (optional, delayed availability, see your Ford dealer for details).



Light Saddle Clearcoat Met.



Silver Frost Clearcoat Met.



Bright Red Clearcoat



Black Clearcoat



Laser Red Tinted Clearcoat Met.



White Opalescent Clearcoat



Moonlight Blue Clearcoat Met.



Vibrant White Clearcoat



Pacific Green Clearcoat Met.



Silver Blue Mist Clearcoat Met.



Alpine Green Clearcoat Met.

## PAINT & TRIM COLORS

| Exterior Paint Colors           | Interior Trim Colors |                 |              |              |
|---------------------------------|----------------------|-----------------|--------------|--------------|
|                                 | Portofino Blue       | Medium Graphite | Willow Green | Saddle Green |
| Light Saddle Clearcoat Met.     |                      |                 |              | •            |
| Bright Red Clearcoat            |                      | •               |              | •            |
| Laser Red Tinted Clearcoat Met. |                      | •               |              | •            |
| Moonlight Blue Clearcoat Met.   | •                    | •               |              |              |
| Pacific Green Clearcoat Met.    |                      |                 | •            | •            |
| Alpine Green Clearcoat Met.     |                      |                 | •            | •            |
| Silver Frost Clearcoat Met.     | •                    | •               |              |              |
| Black Clearcoat                 |                      | •               |              | •            |
| White Opalescent Clearcoat*     | •                    | •               | •            | •            |
| Vibrant White Clearcoat         | •                    | •               | •            | •            |
| Silver Blue Mist Clearcoat Met. | •                    | •               |              |              |

\* Extra cost tri-color paint.

# Ownership experience



## ROADSIDE ASSISTANCE PROGRAM

Every new Ford includes the assurance of a no-cost, 24-hour emergency Roadside Assistance Program provided during the 3-year/36,000-mile bumper-to-bumper warranty. Ask your dealer for complete details on this program which includes such services as fuel delivery, tire change, a jump start, or even help when you're locked out of your car.



Ford Credit offers a wide variety of financing and leasing programs to qualified buyers which can be arranged right at the dealership. Ask your dealer for the facts on these programs.



Optional Ford Extended Service Plans go beyond the 3-year/36,000-mile warranty. Ask your dealer

for complete details on the optional plans and for a copy of the limited warranty.

## DEALER-INSTALLED ACCESSORIES

Your Ford Dealer offers a variety of quality Ford-brand accessories that meet or exceed strict specifications.





363-Ann. Litho in U.S.A. 8/95

Printed on recycled paper  
10% post-consumer waste

