



1 9 9 7

AEROSTAR



THE SPACE, COMFORT AND PERFORMANCE YOUR FAMILY NEEDS



The popular Aerostar Wagon is big on space and comfort. With its V6 power and rear-wheel drive, it's also big in towing capability. Available in regular- and extended-length models, Aerostar Wagon has all the necessary features to satisfy any family's transportation needs.



At right: Extended-length Aerostar in Black Clearcoat over Lt. Prairie Tan Clearcoat Metallic with electronic all-wheel drive.



Above: Aerostar in Toreador Red Clearcoat Metallic. A properly equipped extended-length 2-wheel-drive Aerostar (regular-length shown) can tow up to 4,400 lbs. (reduced by passenger and cargo weight in the towing vehicle).

COMFORT AND SECURITY IN A ROOMY



Aerostar's instrument panel with ergonomic instruments and controls is carefully designed for operating convenience. Major photo: Aerostar's standard 7-passenger seating in Medium Grey. The extended-length model has a generous maximum cargo capacity of 167.7 cubic feet.



A handy storage bin, conveniently located under the front passenger seat, is standard in all models.

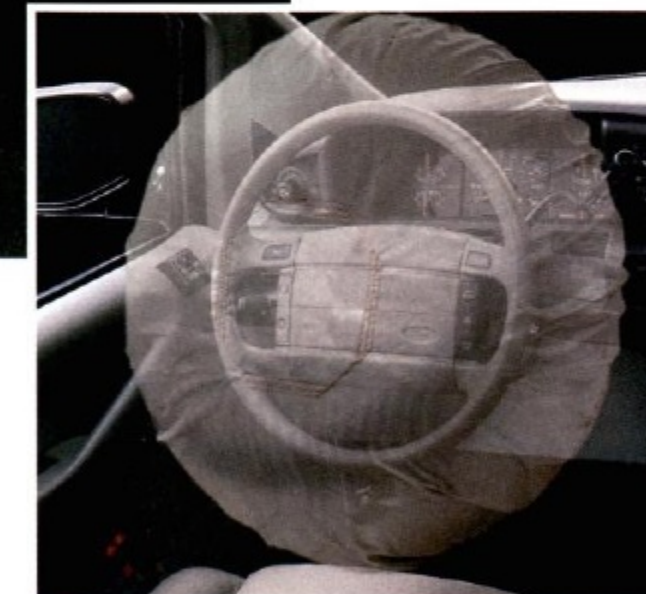
INTERIOR FOR SEVEN



Rear controls for sound systems are provided, and a high-capacity air conditioning system is available.



Optional integrated child safety seats are available with the rear bench seat.



Aerostar's list of standard safety features includes a driver's air bag to supplement the safety belt.

MAJOR STANDARD FEATURES

EXTERIOR

- Solar tinted glass
- "A" pillar mirrors
- Interval front wipers and rear window washer/wiper
- Underbody space saver spare tire carrier
- Sliding glass in the side door and opposite windows
- Black front aero spoiler
- Full-face wheel covers

INTERIOR

- 7-passenger seating arrangement: dual front reclining captain's chairs; 2-passenger and 3-passenger rear bench seats with folding seat backs
- Right-hand under-seat stowage bin
- Front air conditioning
- Driver's air bag to supplement the safety belt
- 3-point lap/shoulder belts for outboard seating positions
- Inside fuel filler door release
- 4-gauge mechanical instrumentation
- Headlamps-on audible alert
- Convenience group: includes courtesy lamp switches (all doors) and cargo lamp
- Electronic AM/FM stereo radio with digital clock
- Rear seat radio controls and headphone jacks
- 3 rear bodyside panel storage bins (extended-length model has two bins on the floor)
- Cloth-covered sun visors with illuminated visor mirrors

FUNCTIONAL

- 3.0L V6 engine (140 hp @ 5,000 rpm) with fully electronic automatic overdrive transmission (2WD wagons)
- 4.0L V6 engine with fully electronic automatic overdrive transmission (EAWD wagons)
- Multi-port electronic fuel injection with EEC-V computer
- Power steering
- Power brakes with rear anti-lock system
- Four-corner coil spring suspension system with gas-pressurized shock absorbers
- P215/70R14SL BSW all-season tires
- P215/75R14SL BSW all-season tires (required and available only with extended-length 2WD wagons)
- 21-gallon fuel tank



Left to right: standard full-face wheel cover; optional forged aluminum wheel.

PREFERRED EQUIPMENT PACKAGES & OPTIONS

APPEARANCE/CONVENIENCE

	XLT Regular Length		XLT Extended Length	
	402A	404A	401A	403A
Front air conditioning	S	S	S	S
Front and rear auxiliary air conditioner/heater	O	O	O	O
Privacy glass (includes solar tinted windshield and front door glass)	O	P	O	P
Electronic speed control and tilt steering wheel	O	P	O	P
Convenience group:				
Electric rear window defroster	O	P	O	P
Power convenience group (1)	O	P	O	P
Electronic AM/FM stereo radio with cassette tape and clock (2)	O	P	O	P
Floor console with cup holders and storage bins	-	O	-	O
Light group (3)	-	O	-	O
Exterior appearance group (4)	-	O	-	O
Premium electronic AM/FM stereo radio with cassette tape and clock (2)	-	O	-	O
Premium electronic AM/FM stereo radio with compact disc and clock (2)	-	O	-	O
Bodyside protection moldings	O	O	O	O
Forged aluminum wheels	-	O	-	O
Luggage rack (5)	O	-	O	-

SEATING

	S	S	S	S
7-passenger seating with dual reclining captain's chairs; 2- and 3-passenger bench seats with folding seat backs	S	S	S	S
7-passenger seating with dual reclining captain's chairs, manual lumbar supports and map pockets; 2- and 3-passenger bench seats with folding seat backs	-	P	-	P
7-passenger seating with quad reclining captain's chairs; 3-passenger rear bench seat	-	O	-	O
Integrated child safety seats	-	-	-	P
Integrated child safety seats (with dual captain's chairs and rear bench seat only)	O	O	O	O

PERFORMANCE

	S	S	S	S
3.0L V6/automatic overdrive (available on 2WD models only)	S	S	S	S
4.0L V6 with fully electronic 5-speed automatic overdrive (included and required with EAWD wagons)	-	-	-	P
Trailer towing package (6)	O	O	O	O

P = Preferred Equipment Package Item
S = Standard
O = Optional

(1) Power windows and door locks and dual remote-control electric mirrors.
(2) Rear radio controls with driver-controlled lockout, headphone jacks (headphones not included) and four speakers. (3) Glove box, under instrument panel, front map dome lamps and illuminated entry system. (4) Luggage rack, lower two-tone paint and tape stripe. (5) Included in exterior appearance group. (6) Class 1 wiring harness, heavy-duty turn signal flasher and limited-slip axle.

COLORS



Medium Willow Green
Clearcoat Metallic



Deep Emerald Green
Clearcoat Metallic



Dark Blue
Clearcoat Metallic



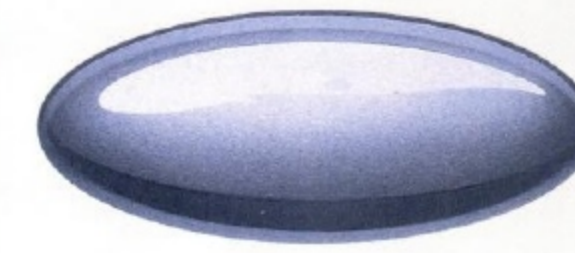
Light Prairie Tan
Clearcoat Metallic



Black Clearcoat



Oxford White Clearcoat



Portofino Blue
Clearcoat Metallic



Toreador Red
Clearcoat Metallic

PAINT AND TRIM COLORS

Exterior Paint Colors	Interior Trim Colors		
	Crystal Blue	Medium Grey	Mocha
Light Prairie Tan Clearcoat Metallic			•
Toreador Red Clearcoat Metallic		•	•
Portofino Blue Clearcoat Metallic	•	•	
Dark Blue Clearcoat Metallic	•	•	•
Deep Emerald Green Clearcoat Metallic		•	•
Medium Willow Green Clearcoat Metallic		•	•
Black Clearcoat		•	•
Oxford White Clearcoat	•	•	•

Note: See your dealer for available lower two-tone and deluxe two-tone paint combinations on extended-length wagons.

OWNERSHIP EXPERIENCE



ROADSIDE ASSISTANCE PROGRAM

Every new Ford includes the assurance of a 24-hour emergency Roadside Assistance Program provided during the 3-year/36,000-mile bumper-to-bumper warranty. Ask your dealer for complete details on this program which includes such services as fuel delivery, tire change, jump start, or even help when you're locked out of your vehicle.

Ford Credit offers a wide variety of financing and leasing programs to qualified buyers which can be arranged right at the dealership. Ask your Ford Dealer for the facts on these programs.



Optional Ford Extended Service Plans go beyond the basic 3-year/36,000-mile warranty. Ask your dealer for complete details on the optional plans and for a copy of the limited warranty.



Using your Ford Citibank VISA® or MasterCard® could earn you hundreds, even thousands of dollars from Ford toward the purchase or lease of a new Ford, Lincoln or Mercury product. To apply or get more information, call 1-800-374-7777. Or visit a Ford or Lincoln-Mercury Dealer, or a branch of Citibank.

DEALER-INSTALLED ACCESSORIES

Your Ford Dealer offers a variety of quality Ford-brand accessories that meet or exceed our strict specifications.

PRODUCT CHANGES AND OPTIONS AVAILABILITY

Following publication of the catalog, certain changes in standard equipment, options, prices and the like, or product delays, may have occurred which would not be included in these pages. Your Ford Dealer is your best source for up-to-date information.

Ford Division reserves the right to change product specifications at any time without incurring obligations.

Options shown or described are available at extra cost and may be offered only in combination with other options or subject to additional ordering requirements or limitations.

For more information, visit our Web site at <http://www.ford.com>



BUILDING A COMPLETE LINE-UP OF QUALITY CARS AND TRUCKS



Aspire



Explorer



Escort



Windstar



Probe



Aerostar



Mustang



Club Wagon



Contour



Econoline



Thunderbird



Taurus



F-Series



Crown Victoria



Ranger



Expedition

