



1 9 9 7

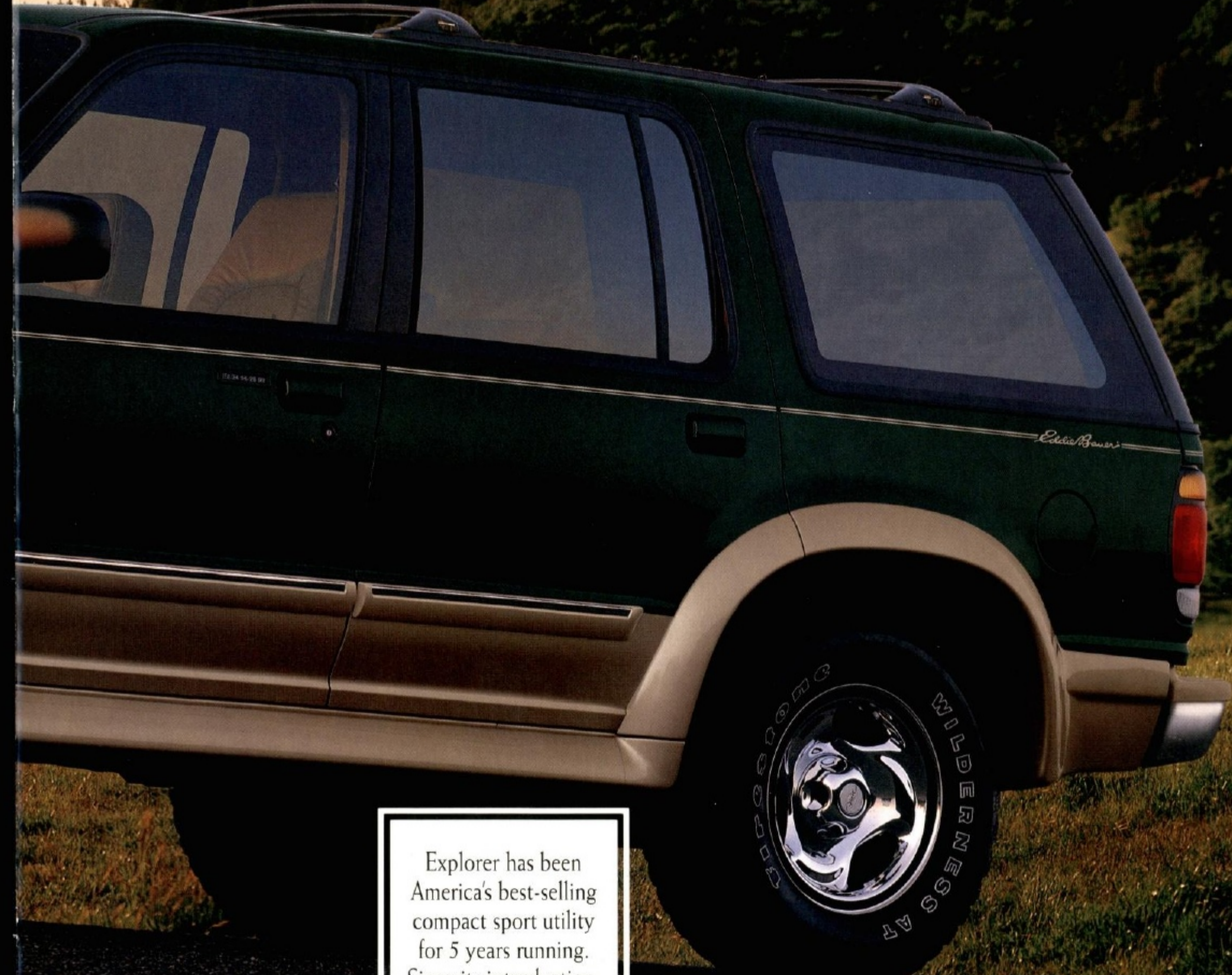
EXPLORER



The 1997 Ford Explorer



Leading the Pack



Explorer has been America's best-selling compact sport utility for 5 years running. Since its introduction, no other vehicle in its class has matched its combination of style, comfort and convenience.

Explorer Eddie Bauer edition in Deep Emerald Green Clearcoat Metallic over Light Prairie Tan Clearcoat Metallic.

The Eddie Bauer



Unique and Elegant

Explorer interiors are great places to be. The Eddie Bauer edition (shown here) combines elegant comfort and spirited style.



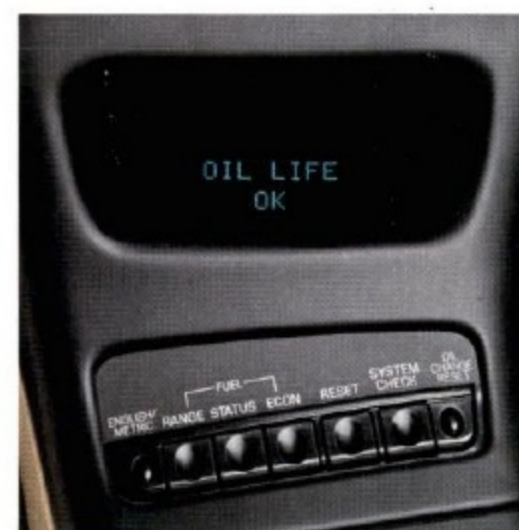
The high-series floor console, available on the Eddie Bauer edition, features rear controls for the fan and radio as well as headphone jacks and cup holders.



Six-way power front seats are included in the Eddie Bauer edition. They adjust forward/back, up/down and tilt forward/back.



The high-series console can be equipped with a message center which monitors 30 vehicle activities. It even tells you when an oil change is due.



The well-appointed Eddie Bauer edition interior in Medium Prairie Tan with optional leather seating surfaces.



A multi-disc CD changer which can handle up to six discs is optional.



In all Explorers, the height of the front seat shoulder harnesses can be adjusted to 5 separate positions to provide individualized comfort.



The available front overhead console includes rear reading lamps, an electronic compass and a convenient outside temperature readout.

The Limited



With top-of-the-line features inside and out, there may be no finer expression of a luxurious compact sport utility vehicle than the elegantly appointed 4-Door Explorer Limited.



Explorer Limited in Black Clearcoat.

The Ultimate Explorer



The inviting Explorer Limited interior in Medium Graphite, with its leather seating surfaces and full array of comfort and convenience items.



The Explorer XLT



No other best-selling compact sport utility has more total interior room than Explorer. The popular 4-Door XLT has a long list of comfort and convenience features.



The XLT interior in Medium Graphite cloth.

Comfort and Versatility



Explorer XLT in Toreador Red Clearcoat Metallic.

The Explorer Sport



Explorer Sport has an unmistakably adventurous spirit, whether you're cruising the highway or taking off-road trails.



Explorer Sport in Medium Willow Green Clearcoat Metallic.



Sport cloth interior in Willow Green.



Adventure with 2 Doors



Explorer Sport in Oxford White Clearcoat.

Ford Explorer



An integrated rear child safety seat is available.

Driver and front passenger air bags to supplement the safety belts are standard equipment.



Explorer was engineered with safety, driveability, comfort and convenience as high priorities. It's designed to be a satisfying all-around driving experience.

Explorer features side door intrusion beams. 4-Door models also include child-proof rear door locks.



Explorer wheels (left to right):
 15" chrome steel (optional with Eddie Bauer);
 deep-dish cast aluminum (Sport, optional with 4-Door XLT);
 luxury cast aluminum with double-window design (Limited);
 16" chrome steel (Premium Sport Package and Eddie Bauer);
 luxury cast aluminum (XLT).



Thoughtfully Engineered

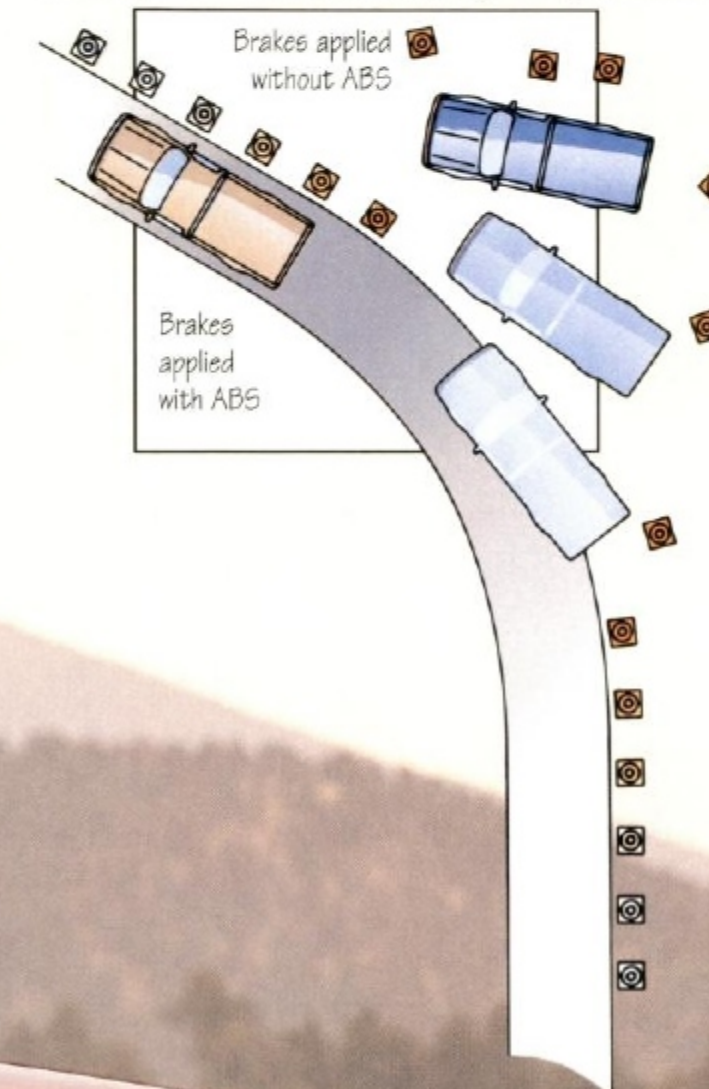
The available power moonroof can be tilted up or slid open completely.



A cellular telephone can be added to the available high-series console.



4-wheel anti-lock brakes help the driver maintain steering control on most wet, dry or icy surfaces.



The optional two-step unlocking system opens doors from the front doors and from the rear trim panel.



With Explorer's two-way liftgate, open the liftgate window alone to toss in small items, or the entire liftgate for easy loading or unloading of larger cargo.



Explorer Eddie Bauer edition 4x4 in Toreador Red Clearcoat Metallic over Light Prairie Tan Clearcoat Metallic.

A Versatile and



CONTROL-TRAC AND ALL-WHEEL DRIVE

Explorer is available in 4x2 and 4x4 configurations. The type of 4-wheel-drive system you get with your 4x4 depends on the engine. V6 engines feature Control-Trac. Explorer's V8 gets all-wheel drive.

Both systems can vary their torque split depending on conditions. Both can sense wheel slippage and send torque to the set of wheels with better traction. Control-Trac can adjust the torque up to 96% to either the front or rear axles. All-wheel drive can adjust nearly 100%.

The Control-Trac system has three driver-controlled settings: 2WD (for normal on-road driving), 4WD Low (for off-roading or heavy snow), and 4WD Auto (for "as needed" 4-wheel drive). In 4WD Auto, 96% of the torque is normally sent to the rear axle. If slippage occurs, some or most of the torque is sent to the wheels with better traction.

All-wheel drive has no driver settings. It's always operating. Normally, torque is split 35% to the front axle and 65% to the rear. Torque can be adjusted depending on slippage at either end, with the compensating torque going to the set of wheels with the most traction.

Consult your Owner Guide for details on these systems.



NEW SOHC V6

A new, more powerful SOHC V6 (see right for availability) is coupled with a new 5-speed automatic transmission designed to efficiently handle its power. An exclusive in Explorer's class, its five forward speeds improve performance.

Powerful Presence



Explorer XLT in Light Prairie Tan Clearcoat Metallic.

POWERTEAM/DRIVETRAIN COMBINATIONS BY SERIES/PACKAGE — 4-DOOR MODELS

	XL 940A	XLT 941A	XLT 945A	EB 942B	EB 946A	LTD 943A
Powerteam - V6	4.0L /5-spd. man.	4.0L /5-spd. man.	4.0L /5-spd. man.	-	-	-
Powerteam - V6	4.0L /5-spd. auto.	4.0L /5-spd. auto.	4.0L /5-spd. auto.	-	-	-
Powerteam - V6 SOHC	-	-	4.0L SOHC/5-spd. auto.	4.0L SOHC/5-spd. auto.	4.0L SOHC/5-spd. auto.	4.0L SOHC/5-spd. auto.
Powerteam - V8	-	5.0L /4-spd. auto.	5.0L /4-spd. auto.	5.0L /4-spd. auto.	5.0L /4-spd. auto.	5.0L /4-spd. auto.
Drivetrain	4x2 or Control-Trac w/4.0L	4x2 or Control-Trac w/4.0L	4x2 or Control-Trac w/4.0L	4x2 or Control-Trac w/4.0L	4x2 or Control-Trac w/4.0L	4x2 or Control-Trac w/4.0L
Drivetrain	-	AWD w/5.0L	AWD w/5.0L	AWD w/5.0L	AWD w/5.0L	AWD w/5.0L

POWERTEAM/DRIVETRAIN COMBINATIONS BY SERIES/PACKAGE — 2-DOOR MODELS

	XL 930A	Sport 931A	Sport 934A
Powerteam - V6	4.0L /5-spd. man.	4.0L /5-spd. man.	4.0L /5-spd. man.
Powerteam - V6	4.0L /5-spd. auto.	4.0L /5-spd. auto.	4.0L /5-spd. auto.
Powerteam - V6 SOHC	-	-	4.0L SOHC/5-spd. auto.
Drivetrain	4x2 or Control-Trac	4x2 or Control-Trac	4x2 or Control-Trac

Dealer Accessories



Explorer bike rack accessory (2 shown)



Ford-brand accessories are made with a commitment to quality. And dealer-installed accessories are covered by the new vehicle limited warranty. See your dealer for more great ways to personalize your new Explorer and a copy of the warranty.



Rear Air Deflector. This aerodynamically styled deflector adds a stylish accent as it helps keep the rear window free of dirt.



The Aero Hood Deflector helps protect the hood from insects, dirt and other debris.



The Front End Cover helps guard against damage from airborne debris. Durable black vinyl with a soft white flannel backing.



Molded splash guards are a low-cost way to help protect your vehicle's finish from mud, salt and other debris.



This Class III trailer hitch is available. The ball mount shown must be purchased separately.



The heavy-duty cargo liner helps protect the rear area. It attaches with Velcro-like fasteners.



With the ski rack, three different adapters offer a wide range of capacity (up to 6 pairs of skis or 4 snowboards). Padded clamp assemblies help guard against equipment damage.

Paint and Trim Colors



Light Prairie Tan Clearcoat Metallic



Toreador Red Clearcoat Metallic



Dark Blue Clearcoat Metallic



Deep Emerald Green Clearcoat Metallic



Medium Willow Green Clearcoat Metallic



Charcoal Grey Clearcoat Metallic



Portofino Blue Clearcoat Metallic



Desert Violet Clearcoat Metallic



Evergreen Frost Clearcoat Metallic



Bright Red Clearcoat



Deep Iris Clearcoat Metallic



Ivory Pearlescent Clearcoat Metallic



Black Clearcoat



Oxford White Clearcoat

PAINT AND TRIM COLORS — 2-DOOR MODELS

Exterior Paint Colors	Interior Trim Colors			
	Royal Blue	Willow Green	Medium Graphite	Medium Prairie Tan
XL				
Bright Red Clearcoat			■	■
Medium Willow Green Clearcoat Metallic			■	■
Black Clearcoat			■	■
Portofino Blue Clearcoat Metallic			■	■
Oxford White Clearcoat			■	■
Sport				
Bright Red Clearcoat			■	■
Deep Iris Clearcoat Metallic			■	■
Medium Willow Green Clearcoat Metallic		■	■	■
Black Clearcoat			■	■
Portofino Blue Clearcoat Metallic	■		■	■
Oxford White Clearcoat	■	■	■	■

PAINT AND TRIM COLORS — 4-DOOR MODELS

Exterior Paint Colors*	Interior Trim Colors			
	Royal Blue	Willow Green	Medium Graphite	Medium Prairie Tan
XL, XLT				
Light Prairie Tan Clearcoat Metallic				■
Toreador Red Clearcoat Metallic			■	■
Dark Blue Clearcoat Metallic	■		■	■
Deep Emerald Green Clearcoat Metallic			■	■
Medium Willow Green Clearcoat Metallic		■	■	■
Charcoal Grey Clearcoat Metallic			■	■
Black Clearcoat			■	■
Portofino Blue Clearcoat Metallic	■		■	■
Oxford White Clearcoat	■	■	■	■
Eddie Bauer (all colors with Light Prairie Tan lower)				
Toreador Red Clearcoat Metallic				■
Desert Violet Clearcoat Metallic				■
Dark Blue Clearcoat Metallic				■
Deep Emerald Green Clearcoat Metallic				■
Medium Willow Green Clearcoat Metallic				■
Black Clearcoat		■		■
Oxford White Clearcoat		■		■
Limited				
Evergreen Frost Clearcoat Metallic				■
Ivory Pearlescent Clearcoat Metallic				■
Desert Violet Clearcoat Metallic			■	■
Black Clearcoat			■	■

* See your dealer for available lower XLT two-tone paint color combinations.

Explorer Packages

2-Door Sport PEP 931A

- P235/75R15SL OWL all-terrain tires • Electronic AM/FM stereo radio with cassette and premium sound • Cloth captain's chairs with floor console

2-Door Sport PEP 934A

- Package 931A • Cloth sport buckets with 6-way power for driver and power lumbar support
- 4.0L SOHC V6/5-speed automatic overdrive
- Luxury group: high-series console, front overhead console (includes rear reading lamps, electronic compass and outside temperature readout), electronics group (includes 2 keyless remote transmitters, keypad, anti-theft and autolock/relock), fog lamps • Floor mats

4-Door XLT PEP 941A

- Electronic AM/FM stereo radio with cassette and premium sound • Luggage rack

4-Door XLT PEP 945A

- Package 941A • Cloth sport buckets with 6-way power and power lumbar support
- 4.0L SOHC V-6/5-speed automatic overdrive
- Luxury group: high-series console, front overhead console (includes rear reading lamps, electronic compass and outside temperature readout), electronics group (includes 2 keyless remote transmitters, keypad, anti-theft and autolock/relock), fog lamps
- Floor mats and cargo cover group

4-Door Eddie Bauer PEP 942A

- Sport buckets with leather seating surfaces, 6-way power and power lumbar support

4-Door Eddie Bauer PEP 946A

- Package 942A • Luxury group: high-series console, front overhead console (includes rear reading lamps, electronic compass and outside temperature readout), electronics group (includes 2 keyless remote transmitters, keypad, anti-theft and autolock/relock), fog lamps • Premium group: electronic automatic temperature control, message center, JBL audio system (includes cassette, subwoofer, amplifier, digital signal processor and power antenna)



2-Door Premium Sport Package 934A in Oxford White Clearcoat.



Explorer XLT Preferred Equipment Package 945A in Toreador Red Clearcoat Metallic.



Eddie Bauer Package 946A in Medium Willow Green Clearcoat Metallic over Light Prairie Tan Clearcoat Metallic.

Features and Options

	2-Door Model			4-Door Model					
	XL 930A	Sport 931A	Sport 934A*	XL 940A	XLT 941A	XLT 945A*	Eddie Bauer 942A	Eddie Bauer 946A*	Limited 943A
Note: Package content is subject to change. P = In package S = Standard O = Optional									
Luxury Group (includes high-series floor console, front overhead console, electronics group (1) and fog lamps)	-	-	P	-	-	P	-	P	S
Premium Sport Package (4x4 with automatic transmission only): wheelip molding system, front and rear bumpers, side step bar (all in Medium Graphite), P255/70R16 OWL all-terrain tires, 16" chrome steel wheels, rear tow hook, luggage rack	-	-	O	-	-	-	-	-	-
High-series floor console	-	-	P	-	-	P	O	P	S
Electronics group (1)	-	-	P	-	-	P	O	P	S
Manual air conditioning	S	S	S	S	S	S	S	S	-
Premium group (electronic automatic temperature control, message center and JBL Audio System/cassette)	-	-	-	-	-	-	-	P	S
Power equipment group (2)	O	S	S	O	S	S	S	S	S
Decor group (privacy glass and bodyside moldings)	O	S	S	O	S	S	S	S	S
Speed control/leather-wrapped tilt wheel (except XL)	O	S	S	O	S	S	S	S	S
Automatic day/night mirror and automatic headlamps	-	-	O	-	-	O	-	O	S
Power moonroof with shade	-	-	O	-	-	O	-	O	O
Voice-activated cellular phone	-	-	-	-	-	-	-	O	O
Intermittent rear window wiper/washer/defroster (includes speed-sensitive front wipers)	O	S	S	O	S	S	S	S	S
Floor mats	-	O	P	-	-	-	-	-	-
Floor mats and cargo cover (cargo cover standard with Sport; unique mats for Limited)	-	-	-	-	O	P	S	S	S
Two-tone rocker paint	-	-	-	-	O	O	-	-	-
Side step bar (2-door); running boards (4-door)	-	O	O	-	O	O	O	O	S
Full-face steel wheels	S	-	-	S	-	-	-	-	-
Deep-dish cast aluminum wheels	-	S	S	-	O	O	-	-	-
16" chrome steel wheels	-	-	-	-	-	-	S	S	-
15" chrome steel wheels	-	-	-	-	-	-	O	O	-
Luxury aluminum wheels	-	-	-	-	S	S	-	-	-
Unique Limited luxury aluminum wheels	-	-	-	-	-	-	-	-	S
License plate bracket	O	O	O	O	O	O	O	O	O
Knitted vinyl buckets	S	S	S	S	-	-	-	-	-
Cloth captain's chairs/floor console	O	P	-	O	S	S	-	-	-
Power 6-way cloth sport buckets/power lumbar support (includes floor console with 4-door) (3)	-	O	P	-	O	P	S	S	-
Power 6-way sport buckets with leather seating surfaces/power lumbar (includes floor console with 4-door) (3)	-	-	O	-	-	O	P	P	-
Power 6-way luxury buckets with leather seating surfaces, 3-position driver's memory/power lumbar	-	-	-	-	-	-	-	-	S
60/40 split bench seats with floor console/stowage bin	-	-	-	O	O	-	-	-	-
Integrated rear child seat with rear seat recliner	-	-	-	O	O	O	O	O	O
5.0L V8/4-speed automatic overdrive transmission	-	-	-	-	O	O	O	O	O
4.0L SOHC V6/5-speed automatic overdrive transmission	O	O	P	O	O	P	S	S	S
P235/75R15 OWL all-terrain tires	-	P	P	-	O	O	O	O	S
3.73 limited-slip performance axle/trailer towing package	O	O	O	O	O	O	-	-	O
4.10 limited-slip performance axle/trailer towing package	-	-	O(4)	-	-	-	O	O	-
Automatic ride control (4x4 and AWD models only)	-	-	-	-	-	-	-	O	O
Luggage rack (100-lb. capacity)	O	O	O	O	P	P	S	S	S
Engine block heater	O	O	O	O	O	O	O	O	O
Electronic AM/FM stereo radio/clock	S	S	S	S	S	S	-	-	-
Premium audio system with electronic AM/FM stereo radio, cassette player and digital clock	O	P	P	O	P	P	S	S	-
Ford Electronics JBL Audio System/cassette with DSP	-	-	O	-	-	O	O	P	S
Six-disc CD changer	-	-	O	-	-	O	O	O	O

*Content may not be deleted from PEP. (1) Includes 2 keyless remote transmitters, keypad and anti-theft system. (2) Includes power windows with "one-touch-down" feature on driver's side, power door locks, dual electric outside mirrors, high-series door trim, accessory delay and two-step unlocking system with lock/unlock button in cargo area. (3) 6-way power with 2-door models for driver's side only. (4) Available with Premium Sport Package only.

Specs



EXPLORER 2-DOOR DIMENSIONS

	4x2	4x4
Wheelbase	101.7"	101.7"
Overall length	178.6"	178.6"
Overhang (front/rear)	33.8"/42.8"	33.8"/43.2"
Tread (front/rear)	58.8"/58.5"	58.8"/58.5"
Overall width	70.2"	70.2"
Width between wheelhouses	41.9"	41.9"
Overall height (empty — max.)	67.8"	67.9"
Step-in height (unloaded)	19.7"	20.1"
Load floor height (loaded)	28.1"	28.5"
Liftgate opening height	33.7"	33.7"
Axle clearance — loaded (rear)	6.7"	6.7"
Angle of approach — loaded	32°	32°
Angle of departure — loaded	21°	21°
Ramp breakover angle — loaded	17°	16°
Cargo length with rear seat up @ belt	29.2"	29.2"
with rear seat down @ belt	61.8"	61.8"
Cargo volume with rear seat up (cu. ft.)	32.6	32.6
with rear seat down	69.4	69.4
Front/Rear head room	39.9"/39.1"	39.9"/39.1"
shoulder room	57.1"/57.9"	57.1"/57.9"
hip room	52.4"/43.6"	52.4"/43.6"
leg room	42.4"/36.5"	42.4"/36.5"
Seating capacity	4	4

EXPLORER 4-DOOR DIMENSIONS

	4x2	4x4
Wheelbase	111.5"	111.5"
Overall length	188.5"	188.5"
Overhang (front/rear)	33.8"/42.8"	33.8"/43.2"
Tread (front/rear)	58.8"/58.5"	58.8"/58.5"
Overall width	70.2"	70.2"
Width between wheelhouses	41.9"	41.9"
Overall height (empty — max.)	67.5"	67.7"
Step-in height (unloaded)	19.7"	20.1"
Load floor height (loaded)	28.4"	28.6"
Liftgate opening height	33.7"	33.7"
Axle clearance — loaded (rear)	6.7"	6.7"
Angle of approach — loaded	28°	28°
Angle of departure — loaded	21°	21°
Ramp breakover angle — loaded	16°	18°
Cargo length with rear seat up @ belt	38.1"	38.1"
with rear seat down @ belt	73.3"	73.3"
Cargo volume with rear seat up (cu. ft.)	42.6	42.6
with rear seat down	81.6	81.6
Front/Rear head room	39.9"/39.3"	39.9"/39.3"
shoulder room	57.1"/57.0"	57.1"/57.0"
hip room	51.9"/51.7"	51.9"/51.7"
leg room	42.4"/37.7"	42.4"/37.7"
Seating capacity	5 or 6*	5 or 6*

*Six-passenger seating with optional split bench front seat in XL and XLT.

SPECIFICATIONS

Drivetrain:	4x2 or 4x4
Engine type:	4.0-liter V6; 4.0-liter SOHC V6 and 5.0-liter V8 optional
Induction system:	Multi-port electronic fuel injection with EEC-V computer
Compression ratio:	9.0:1
Transmissions:	Std. 5-speed manual OD; Opt. 5-speed automatic OD (V6, standard with Eddie Bauer and Limited); Opt. 4-speed automatic OD (V8)
Horsepower, SAE net (4.0L V6):	160 @ 4,200 rpm
Torque, SAE net (4.0L V6):	225 lbs.-ft. @ 2,800 rpm
Battery:	72 AH; 650 CCA maintenance-free with battery saver
Alternator:	95 amps
Frame:	Ladder-type, single channel with six crossmembers
Front suspension:	Independent SLA, torsion bar (computer-selected), gas-pressurized shock absorbers, stabilizer bar

Rear suspension:	Semi floating-type rear axle (limited-slip differential optional), 2-stage variable-rate leaf springs (computer-selected), gas-pressurized shock absorbers, stabilizer bar
Automatic Ride Control	4-corner automatic adjustable air shock absorber leveling system (optional with Eddie Bauer 946A and Limited 4x4 and AWD models)
Steering:	Power-assisted rack-and-pinion, 17:1 ratio
Brakes:	4-wheel power disc with 4-wheel anti-lock system
Fuel tank:	17.5 gallons (2-door); 21 gallons (4-door)
Wheels (type/size):	5-hole disc/15"x7.0 J (16" chrome with Eddie Bauer and Premium Sport Package)
Tires:	P225/70R15SL all-season (XL, Sport, XLT) P235/75R15SL OWL all-terrain (Limited) P255/70R16 OWL all-terrain (Eddie Bauer, Premium Sport Package)

Explorer Towing

MAXIMUM TRAILER TOWING WEIGHTS

	Axle Ratio	Maximum GCWR	2-Door		4-Door	
			4x2	4x4	4x2	4x4
5.0L V8/4-Speed Automatic	3.73	11,000	—	—	6,700	6,400
4.0L V6/5-Speed Automatic	3.27	7,500	3,500	3,300	—	—
	3.55	8,500	4,500	4,300	—	—
	3.55	9,000	—	—	4,800	4,600
	3.73	9,000	5,000	4,800	—	—
	3.73	10,000	—	—	5,800	5,600
4.0L V6/5-Speed Manual	4.10	9,000	—	4,800	—	—
	4.10	10,000	—	—	5,800	5,600
	3.27	6,000	2,000	1,900	1,900	—
	3.55	6,500	—	2,400	—	2,100
	3.73	7,000	3,100	2,900	2,900	2,600

NOTE: Engine/axle ratio combinations shown may not be available in all areas. Your Ford Dealer can supply availability information. All maximum trailer weights shown must be reduced by passenger and cargo weight in the towing vehicle. The following equipment may be required: super engine cooling; load-carrying hitch for towing trailers under 3,500 pounds with the standard rear step bumper; load-equalizing hitch for towing trailers over 3,500 pounds; and optional trailer towing package for when the Gross Combination Weight Rating (GCWR) exceeds 5,000 pounds. For specific information on recommended or required equipment, see your dealer.

Ownership Experience

ROADSIDE ASSISTANCE PROGRAM

Every new Ford includes the assurance of a 24-hour emergency Roadside Assistance Program provided during the 3-year/36,000-mile bumper-to-bumper warranty. Ask your dealer for complete details on this program which includes such services as fuel delivery, tire change, jump start, or even help when you're locked out of your vehicle.



Ford Credit offers a wide variety of financing and leasing programs to qualified buyers which can be arranged right at the dealership. Ask your Ford Dealer for all the facts.



Optional Ford Extended Service Plans go beyond the basic 3-year/36,000-mile warranty. Ask your dealer for complete details on the optional plans and for a copy of the limited warranty.



Using your Ford Citibank VISA® or MasterCard® could earn you hundreds, even thousands of dollars from Ford toward the purchase or lease of a new Ford, Lincoln or Mercury product. To apply or get more information, call 1-800-374-7777. Or visit a Ford or Lincoln-Mercury Dealer, or a branch of Citibank.

DEALER-INSTALLED ACCESSORIES

Your Ford Dealer offers a variety of quality Ford-brand accessories that meet or exceed our strict specifications.

PRODUCT CHANGES AND OPTIONS AVAILABILITY

Following publication of the catalog, certain changes in standard equipment, options, prices and the like, or product delays, may have occurred which would not be included in these pages. Your Ford Dealer is your best source for up-to-date information.

Ford Division reserves the right to change product specifications at any time without incurring obligations.

Options shown or described are available at extra cost and may be offered only in combination with other options or subject to additional ordering requirements or limitations.

For more information, visit our Web site at <http://www.ford.com>



BUILDING A COMPLETE LINE-UP OF QUALITY CARS AND TRUCKS



Aspire



Explorer



Escort



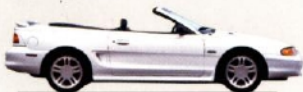
Windstar



Probe



Aerostar



Mustang



Club Wagon



Contour



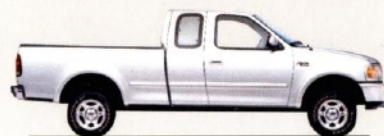
Thunderbird



Econoline



Taurus



F-Series



Crown Victoria



Expedition



Ranger

