

The information and images in this brochure are based on the current technical data when going to print. The equipment shown is factory fitted or available as an option at extra cost, depending on the model. Where a feature is described as an option it should be assumed that it is at extra cost unless specifically stated otherwise. There may be some feature combinations that are not available in the UK and some photography may feature left hand drive vehicles. As part of a policy of continuous specification improvement, Peugeot reserve the right to modify the technical equipment, options and colours at any time. For full specification details please refer to the specification leaflet or ask your Peugeot dealer who will be happy to help. Note that current print and photographic techniques do not allow us to faithfully reproduce the full depth and tone of the colours in this brochure. This brochure is designed to provide general product information and is not a contractual document or offer of sale. For current information please contact your nearest franchised Peugeot dealer. The details in this catalogue cannot be reproduced without the express authorisation of Peugeot.



The Peugeot | **206**



For details of Diplomatic and Export Sales, contact:  
Peugeot Export, 454-490 Mile End Road, London E1 4PE.  
Issued by: Sales and Marketing, Peugeot Motor Company plc, Aldermoor House, PO Box 227, Aldermoor Lane, Coventry CV3 1LT. Telephone: 0845 200 1234 (calls may be recorded for training and quality purposes, calls will be charged at local rate).

[www.peugeot.co.uk](http://www.peugeot.co.uk)

May 2003  
MCP 2106



## Sleek lines restyled.



Malmoe collection, designer: Patricia Urquiola, manufacturer: Moroso - Italy

The sleek lines and raked windscreen have always ensured that the 206 is an extraordinarily good looking car. Now though, we've made its balanced proportions and feline looks even more attractive with some subtle restyling across the whole range. Smooth glass double reflector headlamps, a honeycomb mesh grille and a more distinctive Peugeot badge are just a few of the more evident changes, but we've also redesigned the rear lights and on some models made the bumper inserts and side rubbing strips body coloured to enhance the sporty aspect of the car. Take a closer look at the 206 and see what other surprises are in store.







206

## Cutting edge technology.



Peugeot are recognised as the world's foremost specialists in diesel technology and, thanks to developments like our HDi engine, it's now regarded as one of the most efficient and cleanest energy sources on the market. HDi stands for High Direct pressure Injection which means that a turbocharger supplies fuel to a common rail at pressures of up to 1350 bar on the 1.4 litre engine, and 1500 bar on the 2.0 litre model. The result is more torque, flexibility and power, combined with less pollution, consumption and noisy vibration. If you want a cleaner, quieter car, look no further than an HDi Peugeot.

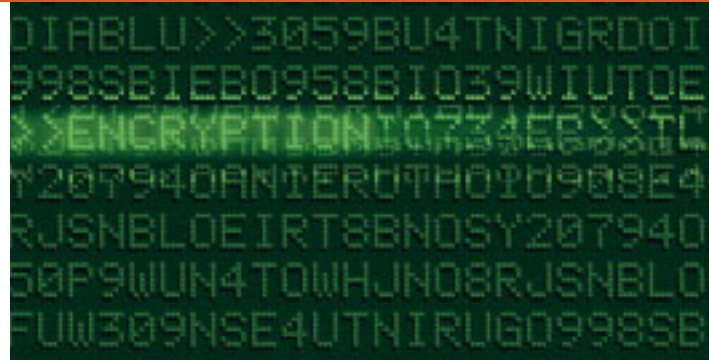








# Multiplexing.



With Multiplexing, we convert information into a digital format then transmit it along a single, slender wire. Managing your electronics like this isn't just more convenient; your 206 is more reliable and it allows us to add new functions – your wipers can switch on at the first sign of rain\*, for example; you always know where you are via satellite navigation\*, and your car can constantly carry out its own safety checks with alerts that you can see or hear.

\* Depending on version







# All terrain testing.



The World Rally Championship (WRC) takes place in 14 countries and on four continents. From January to November the WRC embarks on a turbo charged tour of the planet - starting in the mountains of Monaco and culminating in the mud of Great Britain. Along the way Peugeot WRC drivers Burns, Gronholm, Panizzi and Rovaniemi experience what others can only imagine - every conceivable, driving condition, environment, terrain and culture. It's the ultimate test of man and machine and the Peugeot 206 WRC continues to build its reputation as one of the all-time great rally cars. Having swept all before it in 2001 and 2002 on the way to winning the manufacturer's title, the 206 promises to repeat the feat in 2003.











## Comfort and Convenience

The rigidity and generous soundproofing make sure that the 206 is remarkably quiet. There's also a function that recirculates the air you breathe via a pollen filter; automatic air conditioning (standard on GLX, Roland Garros, GTi (138) and GTi 180) and a heat reflecting windscreen (standard on LX and above) to maintain the perfect temperature. And your driving environment is made even more comfortable with a height-adjustable seat and steering wheel, a remote control radio/CD player (standard on Look and above), a rain sensor, and automatic headlights on (standard on LX and above) and satellite navigation (optional extra, depending on version).

The storage space is generous and versatile; the rear seats fold 60/40 and the front seat inclines to accommodate extra baggage – even a 2.5 metre windsurfing board. The capacious glovebox and boot provide more space and there are thoughtful details, such as drinks holders in the glovebox lid and vanity mirrors in the sunvisor for driver and passenger. Add to this the remote central locking and electric front windows and you'll agree that the 206 is as comfortable as it is convenient.

## Pure design

You'll be turning heads when you drive round town in a 206. Its fluid lines and sleek silhouette attract attention because every single aspect of its design is carefully

balanced. Even apparently small details like the indicators, for example, which are recessed into the new headlamp units, combine with other elements to add to the smooth aerodynamics. And the distinctive honeycomb front grille is complemented by a redesigned Peugeot badge at the rear.

The interior is just as eye-catching; spacious, bright and irresistible. Inside or out, the 206 will make you feel on top of the world.







# Active and Passive Safety

The 206 has inherited all of Peugeot's renown for road-holding and fast response. It's sure-footed at any speed, thanks to McPherson type front suspension and transverse torsion bars on the rear trailing arms. Some models have the option of our Electronic Stability Programme (ESP), which combines four functions – Anti-lock Brakes (ABS), Electronic Brake Force Distribution (EBFD), which balances the pressure on all four wheels to improve control, Traction Control (ASR), which stops wheelspin and Dynamic Stability Control (DSC) to keep you on the right track.

Passive safety is also as important to us as it is to you. That's why the driver's and front passenger's airbags have an inflation speed and pressure that adjusts to impact conditions, the front doors have side impact absorbent padding and there are pre-tensioning safety belts on all the seats. Child seats are secure too, because there are integrated Isofix attachment points front and rear, and the front passenger airbag has a deactivate switch for when you have a rear-facing child seat in the front passenger seat.

## Engines

There are four petrol engines: 1.1, 1.4, 1.6 16-valve and 2.0 litre 16-valve. Three diesel choices: the ultra lean, ultra green 2.0 litre HDi, HDi Eco (120<sub>g</sub> CO<sub>2</sub> emissions) and 1.4 HDi

(113<sub>g</sub> CO<sub>2</sub> emissions) all offer high levels of quiet operation and fuel efficiency\*. All models have the crisp Peugeot 5-speed gearbox, and 1.4 and 1.6 litre petrol models are also available with the clever electronically managed Auto-adaptive gearbox. Designed to adapt to different driving

styles and conditions, it has three programmes: Auto-adaptive for normal driving, Sport for harder, more dynamic driving, and Snow for starting in second or third gear to prevent loss of grip. The gearbox will automatically change down as you decelerate.

\* For details of performance and economy please refer to the 206 specification supplement.

	Consumption in mpg (litres/100 km)			CO <sub>2</sub> (g/km)
	Urban	Extra Urban	Combined	
1.1 litre petrol	34.4 (8.2)	56.5 (5)	45.6 (6.2)	148
1.4 litre petrol	33.6 (8.4)	56.5 (5)	45.6 (6.2)	149
1.4 litre auto petrol	29.7 (9.5)	52.3 (5.4)	40.9 (6.9)	165
1.6 litre 16V petrol (GLX/Roland Garros)	32.8 (8.6)	55.4 (5.1)	44.1 (6.4)	153
1.6 litre 16V petrol (XSI)	32.5 (8.7)	49.6 (5.7)	41.5 (6.8)	161
1.6 16V auto petrol (GLX/Roland Garros)	28.5 (9.9)	51.4 (5.5)	39.8 (7.1)	171
2.0 litre 16V petrol (GTI 138)	26.4 (10.7)	46.3 (6.1)	36.7 (7.7)	185
2.0 litre 16V petrol Sport (GTI 180)	23.9 (11.8)	42.2 (6.7)	32.8 (8.6)	204
1.4 litre HDi diesel	51.4 (5.5)	78.5 (3.6)	65.7 (4.3)	113
2.0 litre Eco HDi 120g diesel	48.7 (5.8)	74.3 (3.8)	62.8 (4.5)	120
2.0 litre HDi diesel	42.8 (6.6)	68.9 (4.1)	56.5 (5)	136
2.0 litre HDi diesel (Dturbo)	40.9 (6.9)	64.2 (4.4)	53.3 (5.3)	144





## 206 STYLE/ECO HDi

The new clear headlights, one colour tail lights, honeycomb grille and subtly rounded bodyline make the 206 one of the most distinctive cars on the road. With the 2.0 litre Eco HDi 90 bhp 120g diesel engine achieving record low CO<sub>2</sub> emissions, it's one of the cleanest

and greenest as well. The Style comes with a 1.1 litre petrol or a 1.4 HDi diesel engine. Internally, the 3 or 5 door hatchback has electric windows, 60/40 folding rear seats, remote central locking and you can choose either blue or light grey Cool Douce cloth trim.



### Key features

- Electric front windows
- Modular passenger seat
- Remote control central locking
- 60/40 split rear seat with three 3-point seat belts and 3 rear headrests
- SMART driver and front passenger airbags (with passenger airbag deactivate switch)
- Remote control radio/cassette player
- Power steering
- Height adjustable steering wheel
- Location of car via flip key
- Transponder immobiliser
- Automatic door unlocking in the event of an accident

• Modular passenger seat





## 206 LOOK

With its dynamic lines, the 206 Look is visually seductive, especially as it now sports a new honeycomb grille, restyled lights and new Peugeot badge at the rear. The interior has equally eye-catching details such as silver grey dials and an aluminium insert on the gear knob. It also offers you great value

for money with features that include air conditioning, a radio/CD player, tinted electric windows and grey, blue or red Zagros cloth trim. The Look is available as a 3 or 5 door hatchback with 1.1 litre and 1.4 litre petrol engines, or a 1.4 litre HDi diesel engine.

### Key features

- Air conditioning
- Remote control radio/single CD player
- Electric front windows
- SMART driver and front passenger airbags (with passenger airbag deactivate switch)
- Remote control central locking
- 60/40 split rear seat with three 3-point seat belts and 3 rear headrests
- Height adjustable steering wheel
- Location of car via flip key
- Body coloured door mirrors, handles and rear number plate housing
- Silver grey dials, console and aluminium insert to gear knob
- Automatic door unlocking in the event of an accident



• Front driver and passenger airbags. Side airbags are an option at extra cost.





## 206 LX

### Key features

- Remote control radio/CD player
- Fog lights
- Automatic rain sensing front wipers and automatic headlights on
- SMART driver and front passenger airbags (with passenger airbag deactivate switch)
- Remote control central locking
- Electric front windows
- Electrically adjustable heated door mirrors
- Location of car via flip key
- External temperature display
- Three 3-point rear seat belts and 3 head restraints
- Transponder immobiliser



GLX

### Key features

- Bohemian 14" alloy wheels
- ABS with Electronic Brake Force Distribution (EBFD) and Emergency Brake Assist (EBA)
- Digital air conditioning with climate control and athermic windscreen
- Remote control radio/CD with 6 disc autochanger
- Ultrasonic alarm
- Automatic rain sensing front wipers and automatic headlights on
- SMART driver and front passenger airbags (with passenger airbag deactivate switch)
- Electrically adjustable heated door mirrors
- Remote control central locking with deadlocks and interior central locking button
- Front fog lights
- Electric front windows

Like the rest of the 206 range, the LX has been subtly re-styled and it now comes with a new honeycomb grille, redesigned lights and body coloured door handles. Its list of standard features also includes automatic rain sensing front wipers, automatic headlights on and fog lights. Inside, there's air conditioning, remote control radio/CD player and the choice of blue or light grey new

Quadrum trim. The LX is available in 3 and 5 door versions with a choice of 4 engines: 1.1 litre and 1.4 litre petrol (automatic or manual), and 1.4 litre or 2.0 litre HDi diesel engines.



## 206 GLX

Whatever the needs of you or your family, the 206 GLX will live up to your expectations. It shares the new honeycomb grille and restyled lights that have been introduced across the whole of the 206 range, but it also has a few standard features that are all its own; ABS with Electronic Brake Force Distribution and Emergency Brake Assist, 14" alloy

wheels and a sophisticated ultrasonic alarm with deadlocks. There are also automatic front wipers, automatic headlights on and air conditioning with climate control. You can choose a 3 door GLX with a 1.4 litre petrol manual engine, or a 5 door version with a 1.4 litre petrol (automatic or manual), 1.6 litre 16-valve petrol (automatic or manual) or 2.0 litre HDi diesel engine.







## 206 QUIKSILVER

### Key features

- ABS with Electronic Brake Force Distribution (EBFD) and Emergency Brake Assist (EBA)
- Air conditioning
- Remote control radio/CD player
- Automatic rain sensing front wipers and automatic headlights on
- Quiksilver seat trim and metallic paint
- Sports front seats, leather steering wheel and aluminium gear knob
- Ultrasonic alarm with transponder immobiliser
- Body coloured, electrically adjustable and heated door mirrors
- Body coloured door handles, side rubbing strips, bumper inserts and number plate housing
- Quiksilver mats and boot tray
- Electric front windows



### Key features

- Side airbags
- 15" alloy wheels
- Remote control radio/CD player
- ABS with Electronic Brake Force Distribution (EBFD) and Emergency Brake Assist (EBA)
- Automatic rain sensing front wipers and automatic headlights on
- Air conditioning
- Ultrasonic alarm with transponder immobiliser
- Body coloured, electrically adjustable heated door mirrors
- Body coloured door handles, side rubbing strips, bumper inserts and number plate housing
- Leather steering wheel and gear knob
- Sports front wings and sports front seats
- Trip computer

The 206 Quiksilver is your perfect means of escape – specifically developed to take you as far as your imagination allows. A unique combination of Peugeot's expertise and the "go-hard" attitude of the leading surf and snow brand,

the 206 Quiksilver is more than just a way to get from A to B. Distinctive aluminium metallic paintwork and a remote control radio/CD player all make sure that it's nothing less than pure attitude on the move.

## 206 XSi/Dturbo

This car will appeal to everyone who has a taste for dynamism, but who nevertheless appreciates a high level of comfort. With its new body-coloured sports bumper inserts and side rubbing strips, chrome surround to the honeycomb grille, chromed exhaust pipe, 15" Sirocco alloy wheels and leather trimmed steering wheel, it displays its sporting credentials proudly.

The driver's seat is height-adjustable and the interior is upholstered in black and grey Merlin cloth trim. In terms of engines, the 206 XSi has a 1.6 litre 16-valve petrol engine, while the Dturbo offers a 2.0 litre HDi diesel engine. Both have Electronic Stability Programme (ESP) as an option which gives you improved roadholding and better control.







## 206 GTi (138)

The GTi is a car with a purpose – its sports front wings, 16" Ouragan alloys, aluminium filler cap and chrome oval exhaust pipe all point towards the fact that this is a car for people who love driving. Turn the key and you'll have proof; the 2.0 litre 16-valve engine gives you

performance\* that is matched only by its braking system. Ventilated disc brakes, ABS, Electronic Brake Force Distribution (EBFD) and Emergency Brake Assist (EBA) all make sure that, although the 206 GTi is powerful, you're the one who's always in control.

\* For details of performance and economy please refer to the 206 specification supplement.



### Key features

- 2.0 litre, 138bhp 16-valve petrol engine
- Digital air conditioning with climate control
- ABS with Electronic Brake Force Distribution (EBFD) and Emergency Brake Assist (EBA)
- Leather, Alcantara suede and Zagros cloth trim
- 16" alloy wheels
- Remote control radio/CD with 6 disc autochanger
- Ultrasonic alarm and transponder immobiliser
- Automatic rain sensing front wipers and automatic headlights on
- SMART driver and front passenger airbags (with passenger airbag deactivate switch) and side airbags
- Speed related power assisted steering
- Trip computer



## Roland Garros

One of the most distinctive aspects of the exquisite Roland Garros is the panoramic glass roof, though it's just one of the features that makes the car among the most refined in its class. We've added to the sleek lines and balanced proportions that it shares with the rest of the 206 range by including striking 14" alloys, electric folding door mirrors, electric front and rear windows, a 6 CD autochanger and digital air conditioning with climate control. The distinctive Roland Garros badging is complemented by Tie-Break Green metallic paint and you can choose a 1.6 litre 16-valve manual or automatic version.



• 14" Bohemian alloy wheel

### Key features

- Fixed panoramic glass sunroof with electric shutter blind
- Side airbags
- Digital air conditioning with climate control
- Remote control radio/CD with 6 disc autochanger
- ABS with Electronic Brake Force Distribution (EBFD) and Emergency Brake Assist (EBA)
- Tie Break Green metallic paint and leather trim
- Automatic rain sensing front wipers and automatic headlights on
- SMART driver and front passenger airbags (with passenger airbag deactivate switch)
- 14" alloy wheels
- Body coloured, electrically heated and folding door mirrors
- Trip computer





## 206 GTi 180

The 206 GTi 180 is a driver's car, developed as a direct consequence of the wealth of experience that we've gained in the World Rally Championship. It combines passion and safety to give you a car with a totally unique character. The Variable Valve Timing system and dual air intake develop a sporty exhaust note and a torque that's way beyond anything you would expect, while the specially developed rear axle and speed related power steering contribute to road-holding that is

truly tenacious. And its looks have the same dynamic appeal; Atlantis 17" wheels, chromed dual exhaust, body-hugging racing-style front seats, spoiler and leather overstitched instrument binnacle – the 206 GTi 180 has it all.



### Key features

- ABS with Electronic Brake Force Distribution (EBFD) and Emergency Brake Assist (EBA)
- 0-62mph in 7.4 seconds
- Top speed 140 mph (where legal)
- Variable Valve Timing
- Double chrome exhaust extension
- 17" alloy wheels
- Leather, Alcantara and Apicula racing seats
- Electronic Stability Programme (ESP)
- Digital air conditioning with climate control
- 6 CD autochanger



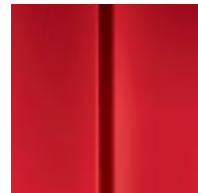




## Solid Colours



Bianca White



Flamenco Red



Indigo Blue

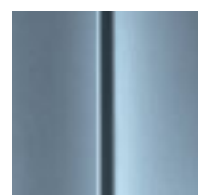
## Metallic Colours



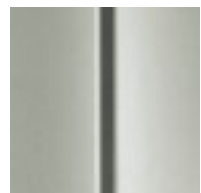
Onyx Black



Aluminium



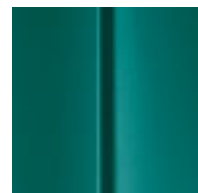
Mercury Grey



Lunar Mist



Moonstone



Tie Break Green\*



Cypress Green



Sahara Yellow

## Pearlescent Colours



China Blue



Diablo Red



Aegean Blue

Metallic or pearlescent paint is an option at extra cost on all models, except Roland Garros and Quiksilver

## Dimensions

Height: from 1,426 m to 1,432 m  
 Width (excl. wing mirrors): 1,652 m and 1,673 m  
 Length: 3,835 m  
 Wheelbase: 2,442 m

\* Only available on Roland Garros model

\*\* Only available on GTi 180 model



Aluminium

## Style



Blue Cooldouce cloth  
 Tungsten ambience  
 Accompaniment Trim Blue cloth



Flamenco Red

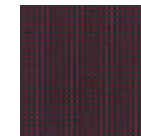
## Look



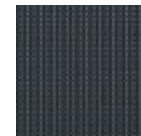
Blue/Grey Zagros cloth  
 Parchment ambience  
 Accompaniment Trim Grey cloth



Blue/Grey Zagros cloth  
 Parchment ambience  
 Accompaniment Trim Grey cloth



Red/Black Zagros cloth  
 Tungsten ambience  
 Accompaniment Trim Black cloth



Grey/Black Zagros cloth  
 Tungsten ambience  
 Accompaniment Trim Black cloth

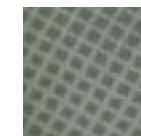


Lunar Mist

## LX/GLX



Light Grey Quadrum velour  
 Parchment ambience  
 Accompaniment Trim Light Grey velour



Light Grey Quadrum velour  
 Parchment ambience  
 Accompaniment Trim Light Grey velour



Blue Quadrum velour  
 Tungsten ambience  
 Accompaniment Trim Blue velour



Astrakan leather/Anthracite Alcantara\*  
 Tungsten ambience  
 Accompaniment Trim Anthracite Alcantara (sports front seats, door panels and glovebox)

\* Leather/Alcantara trim is an option at extra cost on GLX



Aluminium

## Quiksilver



Grey Quiksilver cloth  
 Tungsten ambience  
 Accompaniment Trim Black cloth



Grey Quiksilver cloth  
 Tungsten ambience  
 Accompaniment Trim Black cloth



Aluminium

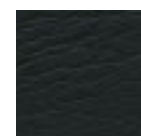
## XSi/Dturbo



Black/Grey Merlin cloth  
 Tungsten ambience  
 Accompaniment Trim Black cloth



Black/Grey Merlin cloth  
 Tungsten ambience  
 Accompaniment Trim Black cloth



Astrakan full leather\*  
 Tungsten ambience  
 Accompaniment Trim Black Alcantara (glovebox and door panels)

\* Leather trim is an option at extra cost

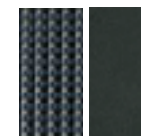


Sahara Yellow

## GTi (138)



Astrakan leather/Alcantara suede with Zagros cloth  
 Graphite ambience



Astrakan leather/Alcantara suede with Zagros cloth  
 Graphite ambience



Astrakan full leather\*  
 Graphite ambience  
 Accompaniment Trim Black Alcantara (glovebox and door panels)

\* Leather trim is an option at extra cost



Aegean Blue

## GTi 180



Light Grey Apicula/Astrakan leather/Black Alcantara  
 Graphite ambience

## Roland Garros



Tan/Green leather  
 Tungsten ambience



**Nimrod alloy wheel**  
Available in  
14", 15" & 16" sizes.



**Rear Spoiler**  
Designed by the Peugeot design studio to complement the original vehicle styling, the 206 rear spoiler adds that extra sporting touch. Available for both 3 and 5 door models.



**Twin Headlight Conversion**  
Sets the 206 out from the crowd whilst retaining all the original adjustment features.



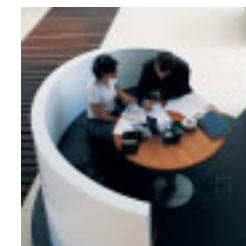
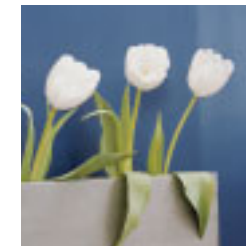
**Sports Upper and Lower Grille**  
Adds that sporty aggressive look to the front of the car.



**Sports Rear Light**  
Complete the sports pack with these truly distinctive rear lights.



## The Peugeot Customer Promise



When you buy a new Peugeot vehicle from a Peugeot Dealer in the UK and entrust your vehicle to one of them for servicing or repair, they promise: to give you the best people, with the best training and diagnostic tools, Genuine Peugeot parts and the best aftersales backup, all at a competitive price.

**Peugeot Peace of Mind**  
Peugeot vehicles are designed and manufactured to give you worry-free motoring and peace of mind. As a Peugeot owner you are entitled to a comprehensive range of customer care services from your Peugeot Dealer who has the expertise to maintain your Peugeot to its peak performance.

### Peugeot Warranties

**3 Years of Warranty:**  
In addition to the 2 year unlimited mileage manufacturer's Warranty, all vehicles first registered in the UK and purchased from a UK Peugeot Dealer benefit from a free optional additional 1 year of Warranty provided by the Peugeot Dealer network in the UK. This optional Warranty is offered free of charge but subject to the manufacturer's recommended servicing being carried out by an authorised Peugeot Dealership. This additional Warranty carries a mileage limit of 60,000 miles (100,000 miles for Boxer models excluding Motorhomes and other converted vehicles) from first registration. The conditions of the additional 1 year Warranty are identical to those of the 2 year manufacturer's Warranty. (For full terms and conditions, please consult your Peugeot Dealer. NB: This 3 years of Warranty is automatically transferable on the sale of the vehicle.)

**12 Year Anti-Perforation and 3 Year Paint Warranty:**  
Also automatically transferable on sale of the vehicle, this will maintain and enhance the resale value of your car. (The Anti-Perforation Warranty is limited to 6 years and the Paint Warranty to 2 years on 206 Van, Partner, Expert and Boxer vans.)

**Peugeot Extended Warranty**  
Should you need protection beyond the initial 3 years of Warranty, the Peugeot Extended Warranty plan can give you cover of up to 120,000 miles or 4 to 5 years on cars, or 4 years with unlimited mileage on Partner, Expert, Expert Combi and Boxer vans. Available as an option at extra cost, the Peugeot Extended Warranty is one of the most competitive schemes of its type and is available exclusively to Peugeot owners. Please ask your Dealer for full details.

**Peugeot Assistance**  
For the first year of ownership you will automatically receive Peugeot Assistance cover for complete peace of mind. Additional Peugeot Assistance may be purchased for

the second and third years. Operated by the RAC, it includes roadside assistance, vehicle recovery, free replacement vehicle or hotel accommodation and chauffeur provision in case of certain medical disabilities. Peugeot Assistance is available within the UK and Europe. Your local Peugeot Dealer has full details of terms and conditions.

**Peugeot Service Care**  
Peugeot petrol engine vehicles need servicing every 20,000 miles or every 2 years, whichever is sooner. Drivers of diesel versions also benefit from extended servicing with 12,000 miles (10,000 non HDi diesel vehicles) or 2 year intervals. With less time spent in the maintenance bay and fewer service visits, Peugeot have passed on the benefits of technology in engine design and lubrication. Cost savings compared to competitive models increase with mileage covered, and could be up to 45%.

In order to minimise the inconvenience associated with normal servicing, Peugeot UK Dealers promise to offer you the choice of:  
- while you wait servicing with a timed appointment;  
- or local vehicle collection from your home or place of work;

- or alternative transport to the railway station, home or place of work;  
- or by arrangement, a hire car at a concessionary rate.  
In addition they will aim to ensure that your vehicle is washed before it is returned.

**Peugeot Insurance Centre**  
Peugeot Insurance has been specifically arranged for Peugeot owners. Offering discounted premiums and a fast and efficient claims service, it is another benefit of owning a Peugeot. Your Dealer can provide a proposal form for a free quotation or you can call the Peugeot Insurance Centre direct on 0845 200 1234 for a free quotation.

Alternatively, contact:  
Peugeot Insurance Centre  
The Wharf  
Neville Street  
Leeds  
LS1 4AZ  
Whatever Peugeot you drive, we guarantee you a competitive premium for your Motor Insurance. As a valued customer of Peugeot we'll make sure you get the very best premium quotation possible from Peugeot Insurance.