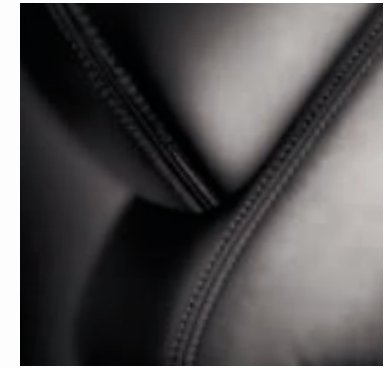


# BUICK

2005 BUICK CENTURY



2005 Buick® Century® provides every driver the kind of craftsmanship and luxury that was once reserved for the few.

Here is a car with beautiful style, timeless proportions and many luxurious features that come standard. A 175-hp V6 engine. A smooth, four-wheel independent suspension. The security of four-wheel disc brakes. Room for six. Even the enjoyment of a standard CD audio system. Here is driving proof you can have a luxurious, well-crafted car at a surprisingly affordable price. Century. It's the attainable car that never forgets it's a Buick.

Note: Photos shown may include optional equipment.



Key: S = Standard A = Available -- = Not Available P = Included in Package

**MODELS**

Century
Century Custom
Century Limited
Century Special Edition

**ENGINE**

3.1 Liter 3100 SFI V6  
175 hp @ 5200 rpm  
195 lb.-ft. of torque @ 4000 rpm

**ESTIMATED FUEL ECONOMY IN MPG (CITY/HWY)<sup>1</sup>**

3.1 Liter 3100 SFI V6	20/30
-----------------------	-------

**STANDARD CAPACITIES**

Trunk volume (cu. ft.) <sup>2</sup>	16.7
Fuel tank (gal. approx.)	17
Seating	6
Curb weight (lbs.)	3,342

**STANDARD EQUIPMENT ON ALL CENTURY MODELS**

Audio system — ETR AM/FM stereo with seek/scan, digital clock, TheftLock, RDS display,<sup>3</sup> CD player, speed-compensated volume and auto tone control

Heat ducts — rear-seat

Air filtration system

Convenience Plus features — reminder tones for ignition key, headlamps, turn signals, parking brake "on"; delayed entry/exit lighting; theater dimming; battery-rundown protection; lockout protection; daytime running lamps with Twilight Sentinel<sup>®</sup> and delayed locking; flash-to-pass feature

Power door locks — include programmable automatic locking with memory and lockout protection features

Power windows — include driver's Express-Down and passenger lockout feature

Remote keyless entry — includes instant alarm and trunk/release

TILT-WHEEL™ — adjustable steering column

Tinted glass — Solar-Ray<sup>®</sup> solar-control windshield and rear window; Soft-Ray<sup>®</sup> side glass

Brakes — four-wheel disc

Suspension — four-wheel independent

Exhaust system — stainless steel

**WHEELS**

**INTERIOR**

	CENTURY	CUSTOM	LIMITED	SPECIAL EDITION
Carpet savers — front and rear	A	P	P	P
Cruise control — electronic	A	P	P	P
Visor vanity mirrors — cloth-covered driver and passenger	S	—	—	—
Visor vanity mirrors — cloth-covered driver and passenger with lighting feature and rear assist grips	—	P	P	P
Interior courtesy lights — includes rear assist handles	—	P	P	P
Instrumentation — includes speedometer, trip odometer, fuel and temperature gauges; warning lights for low fuel, door ajar, trunk ajar, washer fluid level and oil life monitor	S	S	S	S
Audio systems — ETR AM/FM stereo with seek/scan, digital clock, TheftLock, RDS display, <sup>3</sup> cassette and CD players, speed-compensated volume and auto tone control	A	A	A	A
OnStar — includes one-year Safe & Sound service agreement <sup>4</sup>	A	A	A	A
Driver seat — six-way power	A	P	P	P
Steering wheel — leather-appointed	—	—	P	P
Storage — front and rear-door map pockets	S	S	S	S
Seats — front cloth 55/45 reclining split-bench with armrest and dual cup holders	S	S	—	—
Seats — front leather-appointed 55/45 reclining split-bench with armrest and dual cup holders	—	—	P	P

**EXTERIOR**

Mirrors — dual black foldaway with power remote	S	—	—	—
Mirrors — dual body-color foldaway with power remote	—	P	P	P
Paint — basecoat-clearcoat with anti-chip protection	S	S	S	S
Windshield wipers — two-speed with variable delay	S	S	S	S

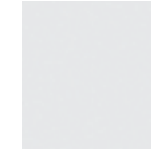
**MECHANICAL**

Engine block heater	A	A	A	A
Tire Inflation Monitor (included and only available with antilock brakes)	A	A	A	P
Traction Control (included and only available with antilock brakes)	A	A	A	P

**SAFETY**

Air bags — driver and right front passenger, frontal <sup>5</sup>	S	S	S	S
Air bags — driver-side, seat-mounted side-impact <sup>5</sup>	—	—	A	A
Brakes — four-wheel disc antilock brake system (includes enhanced Traction Control and Tire Inflation Monitor)	A	A	A	P
PASS-Key <sup>®</sup> II — passive theft-deterrent system	S	S	S	S
Child seat anchors — rear-seat upper and lower LATCH (Lower Anchors and Top tethers for Children) system for compatible child safety seats	S	S	S	S
Headlamps — include daytime running lamps with Twilight Sentinel	S	S	S	S
Trunk release handle — mounted inside the trunk	S	S	S	S

**AVAILABLE EXTERIOR COLORS**



White Opal<sup>6</sup>



Sterling Silver Metallic



Glacier Blue Metallic<sup>7</sup>



Steelmist Metallic<sup>6</sup>



Cashmere Metallic



Dark Bronzemist Metallic<sup>6</sup>



Cardinal Red Metallic



15" Deluxe cover; standard on Century and Custom Package.



15" Chrome-Plated cover; available on Custom Package, standard on Limited Package.



15" Aluminum; available on Custom and Limited packages.



16" Special Edition Chrome-Plated; standard on Special Edition Package.

1 Official EPA estimates not yet available. Estimates based on GM testing.  
2 Cargo and load capacity limited by weight and distribution.  
3 RDS functions only when stations broadcast RDS information.  
4 Call 1-888-4ONSTAR (1-888-466-7827) or visit onstar.com for system limitations and details.  
5 Always use safety belts and proper child restraints, even with air bags. Children are safer when properly secured in a rear seat. See the Owner's Manual for more safety information.  
6 Not available on Special Edition models.  
7 Only available on Special Edition models.

ETR and TheftLock are registered trademarks of Delphi Technologies, Inc. OnStar is a registered service mark and Safe & Sound is a service mark of OnStar Corp. ©2004 GM Corp. All rights reserved. GM reserves the right to make changes at any time and without notice in prices, colors, materials, equipment, specifications, models and availability.