



05 malibu

NATURAL BORN OVERACHIEVER.

Automotive ingenuity comes in two versions of a world-class midsize car — the Malibu® 4-door sedan and Malibu Maxx™ 5-door extended sedan. Receiving rave reviews from the automotive press, both versions offer a combination of features and innovations not available in other cars in their class.* Like the flexibility of a flat-folding front passenger seat and power-adjustable pedals, the power of a 200-hp V6 and the convenience of a factory-installed remote vehicle starter system. Malibu Maxx offers these features plus maximum passenger comfort with its versatile Multi-Flex™ sliding/reclining rear seat, as well as its family-friendly fixed rear skylight and available rear-seat DVD entertainment system.

Shown below: Malibu Maxx LT 5-door extended sedan in Galaxy Silver Metallic. *Based on 2004 competitive information and GM Mid-Sedan segment.



AN AMERICAN REVOLUTION™

2005 malibu SELECT SPECIFICATIONS

Key: S = Standard A = Available -- = Not Available

CHEVY.COM OR 1-800-950-CHEV

MODELS

Sedan
LS
LT
Maxx LS
Maxx LT

ENGINES

2.2 Liter ECOTEC® DOHC four-cylinder
145 hp @ 5600 rpm
155 lb.-ft. of torque @ 4000 rpm
Standard on Sedan

3.5 Liter V6
200 hp @ 5400 rpm
220 lb.-ft. of torque @ 3200 rpm
Standard on all LS and LT models

ESTIMATED FUEL ECONOMY IN MPG ¹	2.2 LITER	3.5 LITER
Malibu (city/highway)	24/35	22/32
Malibu Maxx (city/highway)	--	22/30

STANDARD CAPACITIES

	MALIBU	MALIBU MAXX
Cargo volume (cu. ft.) ²	15.4	22.8
— with rear seat folded down	--	41.0
Fuel tank (gal. approx.)	16	16
Seating	5	5

STANDARD EQUIPMENT ON ALL MALIBU MODELS

60/40 split-folding rear seat
Air conditioning (automatic climate control on LT models)
AM/FM stereo with CD player
Battery-rundown protection
Console with floor shifter and armrest storage compartment
Cup holders, dual front and rear
Door locks, power-programmable, includes lockout protection and delayed locking
Driver Information Center
Electric power steering, variable-assist
Electric rear-window defogger
Flat-folding front passenger seat
Four-wheel independent suspension
Power driver-seat height adjuster
Power outside rearview mirrors
Power windows
Stainless-steel exhaust system (with aluminized muffler and tailpipe)
Tilt/telescoping steering column
Transmission: four-speed automatic with overdrive and Electronic Range Selector
Trunk/liftgate release, power
Two-sided galvanized-steel body panels (except the roof)
Variable, intermittent, speed-sensitive windshield wipers

INTERIOR

	SEDAN	LS	LT	MAXX LS	MAXX LT
AM/FM stereo with CD player and Radio Data System (RDS) ³	A	S	S	S	S
AM/FM stereo with six-disc in-dash CD changer and RDS ³	A	A	A	A	A
Cloth seating	S	--	--	--	--
Cruise control (includes Remote Keyless Entry)	A	S	S	S	S
Custom Cloth seating	--	S	--	S	--
Driver-seat lumbar adjuster	A	S	S	S	S
Heated front seats	A	A	S	A	S
HomeLink universal transmitter with garage door opener	--	--	A ⁴	--	A ⁴
Power-adjustable accelerator and brake pedals	A	S	S	S	S
Remote vehicle starter system	A	A	S	A	S
Six-way power-adjustable driver seat	--	A ⁴	S	A ⁴	S
Steering wheel-mounted audio and cruise controls	--	--	S	--	S
UltraLux™ and leather-appointed seats	--	--	S	--	S
XM Satellite Radio ⁵	A	A	A	A	A

EXTERIOR

Foglamps	--	--	S	--	S
LS Sport Appearance Package, includes 16" bright chrome alloy wheels, 16" tires, rear spoiler, custom-molded splash guards, body-color rocker moldings and chrome exhaust tip ⁶	--	A	--	A	--
LT Sport Appearance Package, includes 16" bright chrome alloy wheels, 16" tires, custom-molded splash guards and chrome exhaust tip ⁷	--	--	A	--	A
Power tilt-sliding sunroof	--	A	A	A	A
Rear spoiler (includes rear-window wiper on Maxx models)	A	A	S	A	S

SAFETY

Child safety seat LATCH system (Lower Anchors and Top tethers for CHildren)	S	S	S	S	S
Daytime Running Lamps with Automatic Exterior Lamp Control	S	S	S	S	S
Dual-stage front air bags ⁸	S	S	S	S	S
Four-wheel antilock brake system (ABS), includes Traction Control	A	S	S	S	S
Head curtain side air bags for front and rear outboard occupants, and seat-mounted side-impact air bags for driver and right-front passenger ⁹	A	A	S	A	S
OnStar ⁹	--	A	A	A	A
PASS-Key® III Plus theft-deterrent system	S	S	S	S	S

WHEELS

1 LT and Maxx LT 16" machined-face aluminum	--	--	S	--	S
2 15" cast-aluminum	A	S	--	--	--
3 15" bolt-on full wheel covers	S	--	--	--	--
4 Maxx LS 16" cast-aluminum	--	--	--	S	--



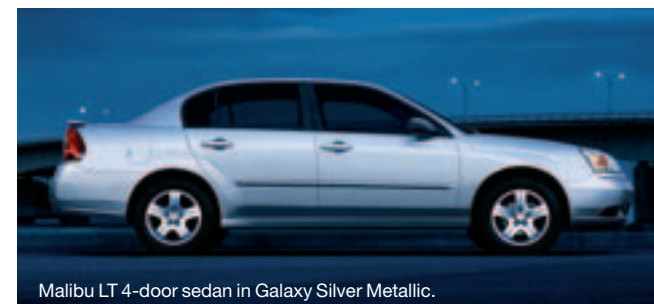
AVAILABLE EXTERIOR COLORS



- Official EPA estimates not yet available. Estimates based on GM testing.
- Cargo and load capacity limited by weight and distribution.
- RDS functions only when stations broadcast RDS information.
- Requires Preferred Equipment Group (PEG) 1SB.
- XM is available only in the 48 contiguous United States. Service fees extra. Visit www.gm.xmradio.com for more details.
- Available early 2005. Limited availability. Includes rear-window wiper on Maxx LS.
- Available early 2005. Limited availability.
- Always use safety belts and proper child restraints, even with air bags. Children are safer when properly secured in a rear seat. Never place a rear-facing infant restraint in the front seat of any vehicle equipped with an active frontal air bag. See the Owner's Manual for more safety information.
- Call 1-888-4ONSTAR (1-888-466-7827) or visit www.onstar.com for system limitations and details.
- LS and LT models only.

The XM name is a registered trademark of XM Satellite Radio Inc. OnStar is a registered service mark of OnStar Corporation. HomeLink is a registered trademark of Johnson Controls, Inc. Chevy is a trademark of the GM Corp. ©2004 GM Corp. All rights reserved. GM reserves the right to make changes at any time and without notice in prices, colors, materials, equipment, specifications, models and availability.

05CHEMALSP01



Malibu LT 4-door sedan in Galaxy Silver Metallic.