

Malibu K81



Sedan · Coupe · Wagon

FILINGER

## 1981 Chevy Malibu

You don't buy a Malibu just because it has a lot of room inside.

You don't buy it just for the fuel economy\* or the riding comfort or the luggage space.

You don't buy a Malibu for its crisp styling, solid construction, smooth ride, handsome interior, Chevy value—or the wonderful way it feels when you slip behind the wheel.

You don't buy a Chevy Malibu for any of these reasons.

You buy it for all of these reasons.

All of these and more.

Because what we have here, Canada, is a very comfortable family-size car with all kinds of value, efficiency\* and common sense.

It is also a car you'll get a huge kick out of driving.

And driving.

And driving.



### Room for six, and stuff.

Try to cram a sizeable family into a little car and you're in big trouble.

Not so with Chevy's mid-size Malibu.

Though trim and tidy on the outside, Malibu sits six people of assorted size without making contortionists of them.

And behind them, in the trunk, there's almost 17 cubic feet of space for just about anything anybody would want to haul.

On vacation.

On a run-around Saturday.

Anytime.

### A beautiful car, outside and in.

Words like clean, trim, uncluttered and contemporary begin to describe Malibu.



Words like gaudy definitely don't.

That's because we want you not to tire of the way your Malibu looks.

The crisp new cut of the Sport Sedan's roofline makes this popular 4-door all the harder to resist, for 1981.

Inside, Malibu is a bright and cheerful place to be.



Contoured full-foam seats are covered with smart cloth to please not just your body but your eye.

And a brand new optional Special Custom Interior for Malibu Classic Sport Sedans and Sport Coupes gives you the definite feeling you've been reborn into royalty. There are sumptuous touches everywhere, including a 55/45 split front seat with fold-down armrest.

Not extravagant, mind you. Just awfully nice.

### Feels great on the road.

Malibu's smart size pays off as you drive. It's small enough to slip easily through tight traffic and into stingy parking places, yet big enough to give you a smooth and solid ride out on the open road.

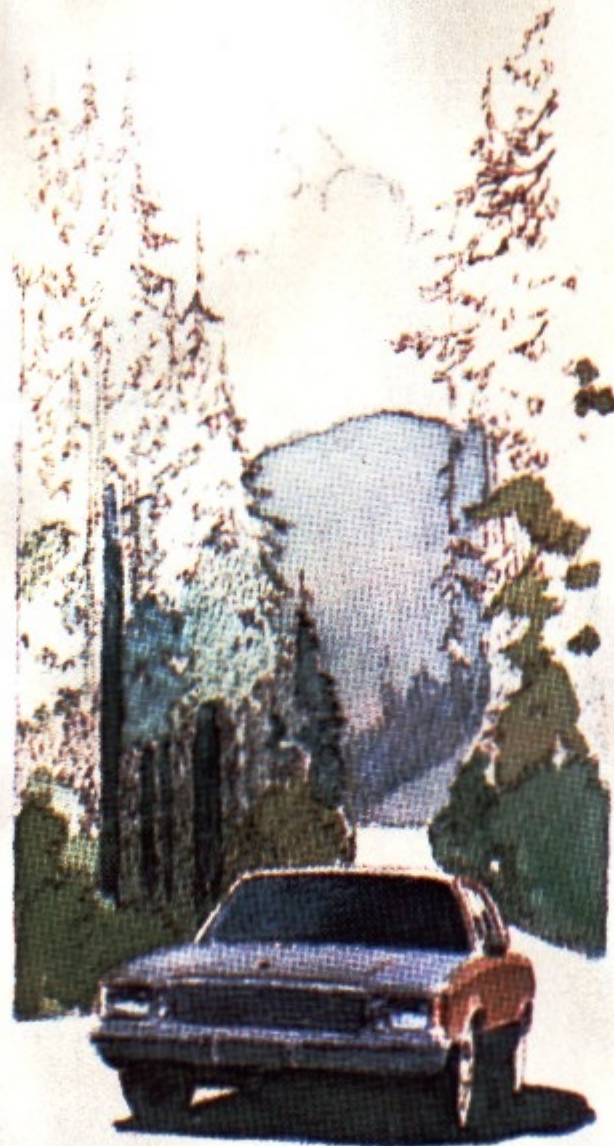
Components include: Full Coil suspension, front stabilizer bar, V6 engine, cushioned body mounting system, full-perimeter frame.

All are standard, as are radial tires, power steering, power brakes and much more.

And for the ultimate in Malibu road-ability you can have the optional F41 sport suspension package.

It also happens to be a lot of fun.

Yes, fun. Try it.



### A car is not just what we make it.

It's also what you make it, through the skillful selection of options.

For example, you could take the Malibu Sport Sedan and add the aforementioned F41 suspension with required P205/70 radial tires, a pair of sport mirrors, a gauge package and rally wheels and you know what you'd have?

A decidedly upbeat automobile.

A Malibu for the young, and young at heart.

### What's new for 1981?

One way Chevrolet got to be Chevrolet was never to leave good enough alone.

So for 1981, we've worked hard to make Malibu an even better car than before.

For instance, standard automatic transmission or there's our new optional Computer Command Control. It's an actual computer that monitors engine functions to help provide impressive efficiency\* while helping to control emissions.

Also new for 1981:

A jack that lifts the car from the side.

New Easy-Roll tires. (They take a little more air to save a little more gas.)

There's also a new grille, new tail-lights, a restyled instrument panel.

And as mentioned, that rakish new Sedan roofline and spiffy new optional interior.

All in all, Malibu is one heck of a car.

Read all about it.

### A WORD ABOUT THIS CATALOGUE.

We have tried to make this catalogue as comprehensive and factual as possible and we hope you find it helpful. However, since the time of printing, some of the information you will find here may have been updated. **Also, some of the equipment shown or described throughout this catalogue is optional at extra cost. Your dealer has details and, before ordering, you should ask him to bring you up to date.**

The right is reserved to make changes at any time, without notice, in prices, colours, materials, equipment, specifications and models. Check with your Chevrolet dealer for complete information.

\*Your Chevrolet dealer has fuel consumption/economy estimates based upon Transport Canada approved test methods which are available for your review.

## MALIBU CLASSIC

Top-of-the-line Malibu Classic is a Malibu and then some... whether it's a sedan, coupe or wagon. Leaf through the pages that follow and see for yourself what makes it so appealing.

Special touches include pull straps on the front doors, full wheel covers, additional sound insulation, courtesy light, glove compartment light, dual horns, stand-up hood ornament and more.

For a Malibu Classic with a personality all its own, look over the Malibu Classic Landau Coupe. Package includes vinyl cover over rear portion of roof, sport wheel covers, and body pin striping.

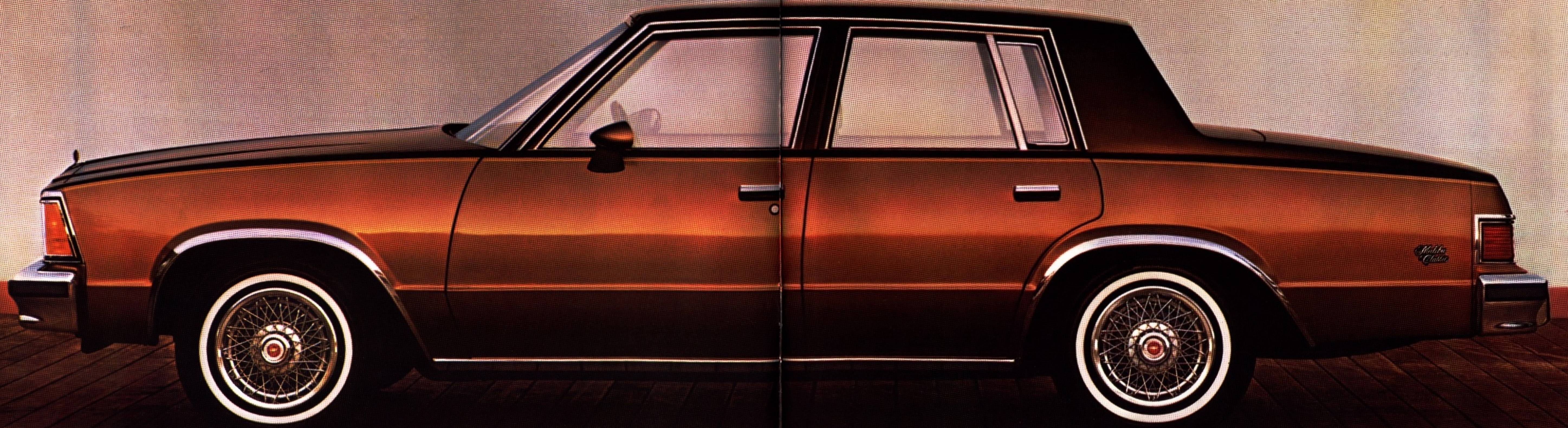
Then there's the new optional Special Custom interior for sedans and coupes whose rich fabric, comfort and elegant detail show what luxury is all about.

If you like to go first class, Malibu Classic is your car.



Malibu Classic Sport Sedan

ANA



Malibu Classic Sport Sedan



Mallbu Classic optional new Special Custom Interior with 55/45 split front seat Includes fold-down armrest.



Malibu Classic standard interior.



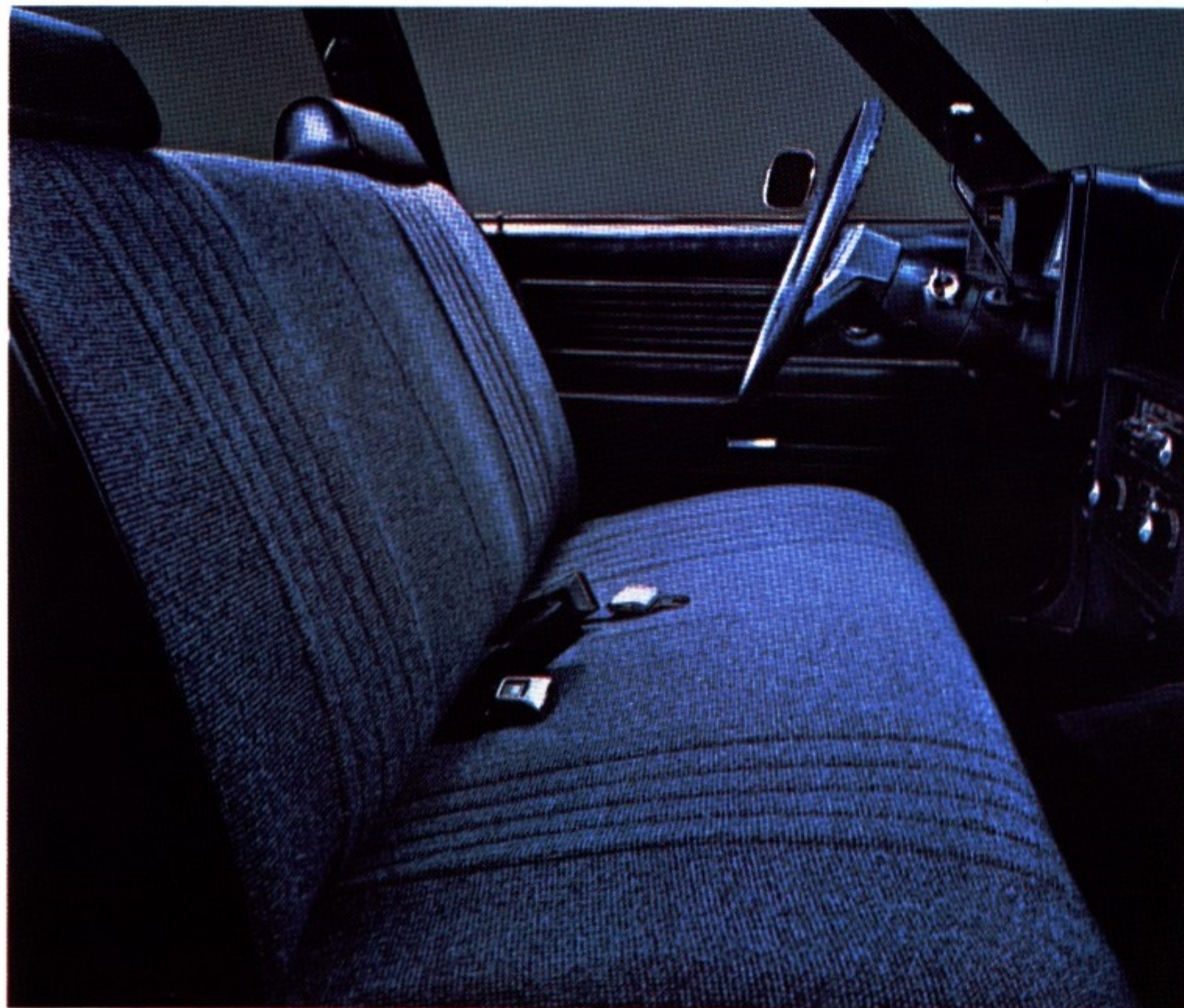
Malibu Classic interior with optional bucket seats.



Malibu Classic Landau Coupe.



Malibu Sport Coupe.



Malibu standard cloth interior.



Malibu Sport Sedan.

## MALIBU.

We may be a little prejudiced, but we firmly believe Malibu is one of the best buys in Canada today for people who need the room and comfort of a six-passenger car.

Consider these credentials: Crisp, contemporary styling. Good fuel economy. \* Peppy performance. A smooth ride. And a trunk that's family-size.

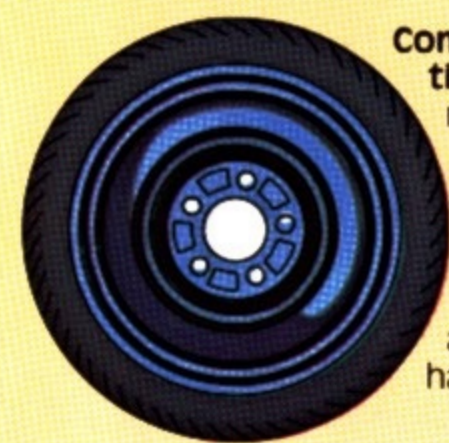
Standard Malibu features include power steering, power front disc brakes, V6 engine, new

Easy-Roll radial tires, new Delco Freedom II battery, full-perimeter frame, full coil suspension, front stabilizer bar, wall-to-wall carpeting, dual-mode flow-through ventilation, an acoustical ceiling, and our new optional Computer Command Control system. See page 13 for details.

There's one word that sums it all up. The word is value. It's what makes a Malibu a Malibu.

\*Your Chevrolet dealer has fuel consumption/economy estimates based upon Transport Canada approved test methods which are available for your review.

# STANDARD FEATURES



**Compact spare tire.** Provides more usable space in trunk compartment compared to conventional spare; lighter and easier to handle as well.

**Delco Freedom II battery.** Improved new design is smaller, lighter and more staying power than the original Freedom battery. Never needs refilling. Provides more reliable starting;

better able to withstand road shock and vibration; maintenance free.



**Full-Coil suspension.** Coil springs at each wheel are computer-selected for specific model and equipment. Includes front stabilizer bar to help reduce body lean during turns.



**New Easy-Roll tires.** GM Specification fiberglass-belted radial ply tires, with advanced tread design, carry more pressure than last year's tire. The result is less rolling resistance that aids fuel economy.



**Large trunk capacity.** Generously-sized trunk for coupes and sedans has almost 17 cu. ft. of space that absorbs suitcases for vacation travel and bulky objects for weekend hauling.

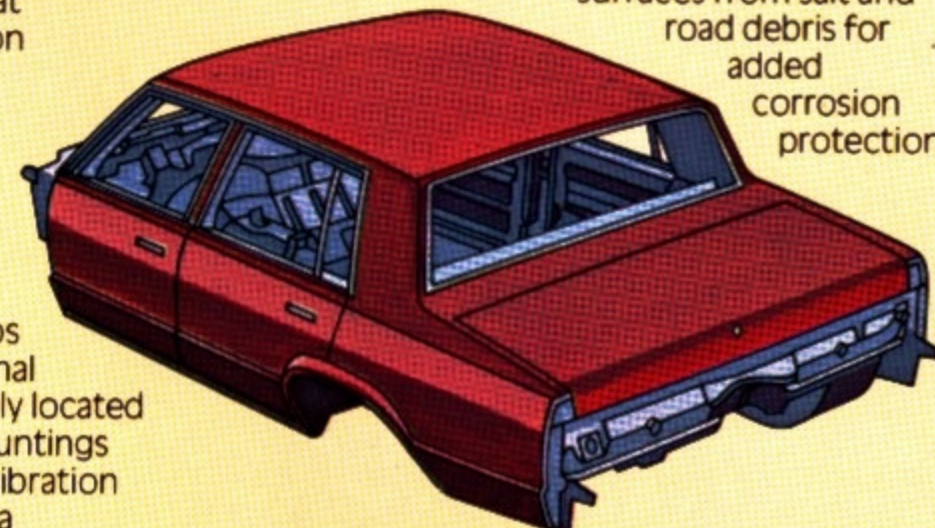
**Full perimeter frame.** Helps provide strength and torsional rigidity. Fourteen strategically located rubber-cushioned body mountings help isolate road noise and vibration to help provide a smooth, quiet ride.

**Power front disc/rear drum brakes.** A self-adjusting system. Fade-resistant front disc brakes are teamed with finned rear brake drums. Include disc brake audible wear sensors that warn when pads need replacing.

**High Energy Ignition.** A solid-state system that eliminates points and ignition condenser, and delivers a high-voltage spark that helps extend time between tune-ups.



**Increased corrosion-resistant treatments.** More protection than ever that includes painting of body with new primer paint, applied by an electro-coating process; plus submersion of frame assembly in new hot melt wax. **Inner fenders, front and rear.** Helps protect outer surfaces from salt and road debris for added corrosion protection.



**V6 engine.** Standard 3.8 Litre engine is fuel-efficient\* and responsive; compact size in engine compartment makes for easy servicing.

\*Your Chevrolet dealer has fuel consumption/economy estimates based upon Transport Canada approved test methods which are available for your review.

## More Standard Features.

### SEDANS, COUPES AND WAGONS:

- Power steering and automatic transmission
- New side-lift frame jack
- Colour-keyed seat and shoulder belts
- Single-retractor front seat belt system
- Moulded full-foam seat construction
- Inside hood release
- Foam-backed cloth headlining
- One-piece cut-pile passenger compartment carpeting
- Day-night rearview mirror
- Colour-keyed steering column and steering wheel
- Column-mounted lever for turn signal and headlight dimmer
- Glove compartment lock
- Cigarette lighter
- Double-panel door, hood, deck lid or tailgate construction
- Delcotron generator
- Dual-mode flow-through ventilation
- Hide-A-Way dual speed electric windshield wipers
- Cushioned body mounting system
- Visible ball joint wear indicators on front suspension lower control arms
- Coolant recovery system
- Steel bumpers with high-strength aluminum reinforcements (steel reinforcement with wagon rear bumper)

### MALIBU CLASSIC:

- New front door pull straps
- Full wheel covers
- Glove compartment, instrument panel, courtesy and ashtray lights
- Special acoustical quiet package
- Dual horns.

### MALIBU CLASSIC LANDAU:

- Vinyl cover on rear portion of roof
- Sport wheel covers
- Body pin striping.

**For still more standard features on wagons, see page 18.**

## Engine Selection

### 3.8 Litre V6.

This smooth-firing standard V6 with 229-cubic-inch displacement is a lively performer. It is short and compact with cylinders banked three to a side, has a cast-iron engine block and crankshaft, plus Dualjet carburetor. Compression ratio, cylinder diameters, inlet and exhaust valves are identical to the 5.0 Litre V8.

### 4.4 Litre V8.

This optional 267-cubic-inch engine delivers added power for passing and carrying heavy loads. It is characterized by a short-stroke valve-in-head design and Dualjet carburetor which help give good engine performance. It also features a cast-iron cylinder block with full jacket cylinder cooling, a precision-balanced, cast nodular iron crankshaft, hydraulic valve lifters and exhaust valve rotators.

### 5.0 Litre V8.

Get a generous reserve of power and performance plus added trailer towing capacity with this optional 305 cu. in. V8. Its short-stroke valve-in-head design is equipped with a 4-barrel carburetor for added power output and good performance. Includes full jacket cylinder cooling, a precision-balanced crankshaft and hydraulic valve lifters. Available on wagons only.

## MALIBU POWER TEAMS

Engine	ENGINE AVAILABILITY		Displacement (cubic inches)	TRANSMISSION		Computer Command Control System Option NB1
	V.I.N. Engine Code*	Ordering Code		Sedans and Coupes	Station Wagons	
3.8 Litre 2-Bbl. V6	K	LC3	229	Std.	Std.	NA
4.4 Litre 2-Bbl. V8	J	L39	267	EC	EC	EC
5.0 Litre 4-Bbl. V8	H	LG4	305	NA	EC	EC

(K) PRODUCED BY GM - CHEVROLET MOTOR DIVISION, U.S.A. (J, H) PRODUCED BY GM - CHEVROLET MOTOR DIVISION, U.S.A. AND GM OF CANADA. \*V.I.N. (Vehicle Identification Number) Engine Code is the eighth digit from the left on the vehicle serial number plate. The vehicle serial number plate is located on the top of the driver's side of the instrument panel and can be viewed from the exterior of the car by looking through the windshield. Std. - Standard. EC - Optional at Extra Cost. NA - Not Available. Caution: Use of leaded fuel will cause the Computer Command Control System to malfunction.

### LONG RECOMMENDED SERVICE INTERVALS\*

(Under normal driving conditions)

Engine Oil	12 months or 12,000 kilometres (7,500 miles)
Oil Filter	12 months or 12,000 kilometres (7,500 miles); every 24,000 kilometres (15,000 miles) thereafter
Spark Plugs	48,000 kilometres (30,000 miles)
Chassis Lubrication	12 months or 12,000 kilometres (7,500 miles)
Automatic Transmission Fluid Change	Every 160,000 kilometres (100,000 miles)

\*See the Owner's Manual for driving conditions requiring more frequent intervals.

### DIMENSIONS: Millimetres (Inches)

Exterior	Sedan		Coupe	
	mm	(in.)	mm	(in.)
Wheelbase	2745	(108.1)	2745	(108.1)
Length (overall)	4895	(192.7)	4895	(192.7)
Width (overall)	1836	(72.3)	1836	(72.3)
Height (loaded)	1415	(55.7)	1415	(55.7)
Fuel Tank Capacity: litres (gals.)	66.2	(14.6)	66.2	(14.6)
Interior				
Head Room - Front	983/978*	(38.7/38.5*)	962/955*	(37.9/37.6*)
Leg Room - Front	1086	(42.8)	1086	(42.8)
Shoulder Room - Front	1453/1440*	(57.2/56.7*)	1442/1432*	(56.8/56.2*)
Hip Room - Front	1326	(52.2)	1314	(51.7)
Head Room - Rear	957/950*	(37.7/37.4*)	961/955*	(37.8/37.6*)
Leg Room - Rear	965	(38.0)	892	(35.1)
Shoulder Room - Rear	1450	(57.1)	1411	(55.6)
Hip Room - Rear	1412	(55.6)	1384	(54.5)
Usable Trunk Capacity: litres (cu. ft.)	469	(16.6)	469	(16.6)

\*Malibu Classic

**For wagon dimensions, see page 19.**

# OPTIONS



COMPUTER  
COMMAND  
CONTROL

For 1981, General Motors introduces computer technology of the future with the remarkable Computer Command Control system now optional in many 1981 gas-powered Chevrolets. Heart of the system is a microprocessor, an on-board computer that monitors engine performance. By continually analyzing engine systems and making thousands of calculations per second, the Computer Command Control fine-tunes the engine. For example, it adjusts initial timing and idle speed and compensates for changes in altitude and atmospheric conditions. It even compensates as engine parts wear, to help cut trips to the dealer for minor adjustments, and also cuts the number of recommended maintenance operations.

Here's another remarkable fact: The system is self-diagnostic. Should it ever need attention, Computer Command Control will flash a 'Check Engine' indicator light on the instrument panel. A series of coded messages quickly pinpoints the malfunction for your service technician.

This new emissions and fuel control system features space-age electronics and solid-state reliability. In fact, the Computer Command Control, along with the entire emissions system, is covered by a 5-year/80,000 kilometre (50,000-mile) Emission Control System Warranty. Ask your Chevrolet dealer for details.

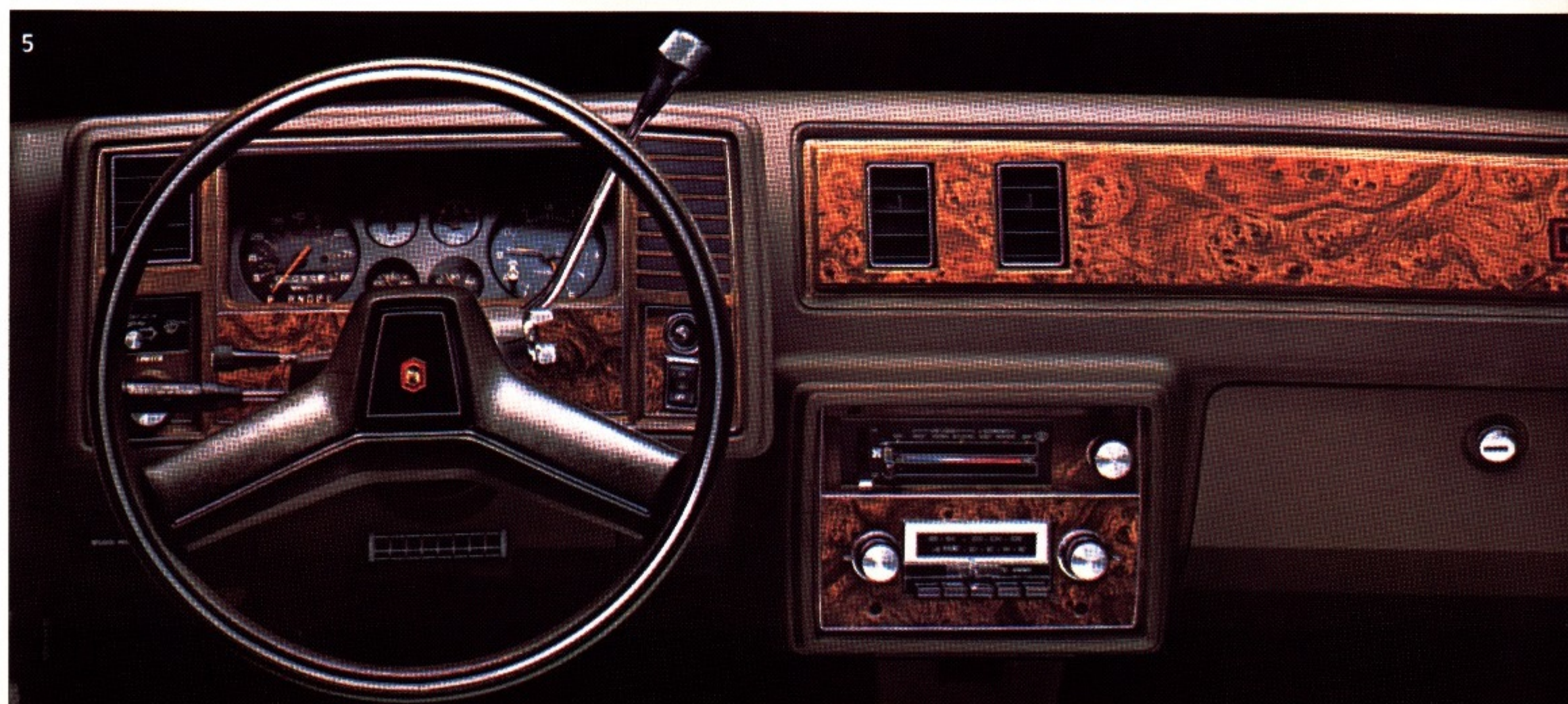
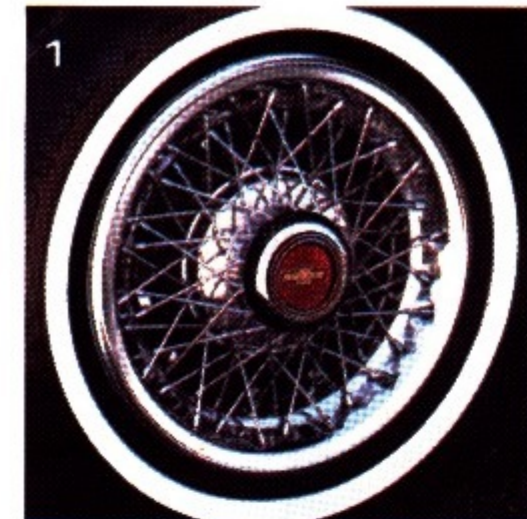
What this means to you as a Chevrolet owner is that this advanced system enables us to reduce automobile exhaust emissions to the lowest level in Chevrolet history, while, at the same time, providing you with impressive fuel economy.

Caution: Use of leaded fuel will cause the Computer Command Control system to malfunction.

# OPTIONS CONTINUED

Make Malibu whatever you like by choosing from the options on this page which are designed for comfort, pure pleasure or convenience.

- 1. Wire wheel covers with new locking option.** New locking device for optional wire wheel covers helps protect against theft. Bracket that locks wheel cover to hub area can be removed only by using special tool to loosen bolt fastener.
- 2. Rally wheels.** Star design with gray and silver-colour accents. Includes bright trim rings.
- 3. Sport wheel covers.** Honeycomb-like pattern in either silver or gold colour.
- 4. Vinyl roof cover.** Adds still more distinction to the new formal roof on Sedans as well as on Coupes. (Not available on Malibu Classic Landau Coupe). Electric rear window defogger (shown). Helps keep rear window free of fog or frost.



**5. Malibu Classic instrument panel.** Better looking than ever this year with a recessed, glossy black section on the right boldly accenting the padded panel. Smart simulated woodgrain trim is included with the optional Gauge Package (gauge package N/A with Computer Command Control).

**6. Power Windows.** Include power rear vents which can be controlled from driver's seat or in rear. (Sedans and Wagons).

**7. Automatic speed control with new "resumé speed" feature.** Automatically maintains a constant speed without touching accelerator. New "resumé speed" feature lets driver slow up or stop, then accelerate again to the pre-set speed without resetting control.

**8. Auxiliary lighting.** Includes ashtray, glove compartment and instrument panel courtesy lights\*; luggage compartment and underhood lights; automatic time-delay dome light; headlight reminder buzzer; and cargo-area dome lamp for wagons.

**9. Comfortilt steering wheel.** Adjusts to six different positions for a comfortable driving angle and for easier entries and exits.

**10. Air conditioning.** Cools and ventilates with easily-operated controls. **Sound systems.** Built to GM-Delco quality standards. Choose from AM radio, AM/FM radio, AM/FM stereo radio or AM/FM stereo with 8-track stereo tape or stereo cassette tape. Radios include dual front speakers. Stereo systems include dual rear speakers. Windshield antenna included with factory-installed radios.

**11. Intermittent windshield wiper system.** Lets you vary the speed of wiper cycles to match weather, from light mist to downpour.

**12. Power radio antenna.** Turn on radio and antenna automatically rises from fender; turn off radio or ignition and it lowers. Available only with optional factory-installed radios.

**New F-41 Sport suspension (not shown).** Gives you a firmer ride and reduces body sway on curves with the help of a larger diameter front stabilizer bar, rear stabilizer bar, higher-rate springs and matching shock absorbers. Requires P205/70 radial tires. (Not available on wagons.)

*Speedometers in Canada have major scale in km/h, secondary in MPH and odometer in kilometres.*

## Still other options you may need or enjoy.

FOR SEDANS, COUPES AND WAGONS —  
 New halogen headlights noticeably increase nighttime visibility  New Landau-style vinyl roof cover (coupes)  Electric clock  Console  Tinted glass, all windows  Gauge Package with trip odometer (includes electric clock, voltmeter, temperature and oil pressure gauges)††  New Special Custom Interior with 55/45 split front seat (Malibu Classic Sedans and Coupes)  Custom Two-Tone paint  Power door locks  Body pin striping†  Bumper rub strips  Bumper guards  Colour-keyed floor mats, front and rear  Restyled full wheel covers\*\*  Quiet Sound group\*  Limited slip differential axle  Heavy-duty battery  Heavy-duty cooling  Delcotron 63-amp generator  Dual horns.

**Seating:**  55/45 split front seat (Malibu Classic)  Power seat (driver's side with 55/45 split front seat)  Bucket seats (Malibu Classic Coupe).

**Mouldings:**  Deluxe body side mouldings  Door edge guards  Side window reveal mouldings\*  Wheel opening mouldings\*.

**Mirrors:**  Remote control outside rearview mirror, LH  Sport mirrors, LH remote and RH manual  Twin remote Sport mirror.

**Special Suspensions:**  Heavy-duty front and rear suspension  Sport suspension (sedans and coupes).

**Tires:**  P185/75R-14 fiberglass-belted radial ply white-wall (sedans and coupes)  P195/75R-14 steel-belted radial ply white-wall  P205/70R-14 steel-belted radial ply white-wall (sedans and coupes, Sport suspension required)  P205/70R-14 steel-belted radial ply white lettered (sedans and coupes, Sport suspension required).

\*Standard on Malibu Classic models.  
 \*\*Standard on Malibu Classic and wagons.  
 †Standard on Malibu Classic Landau.  
 ††N/A with Computer Command Control.

Discover even more options for wagons on page 19.

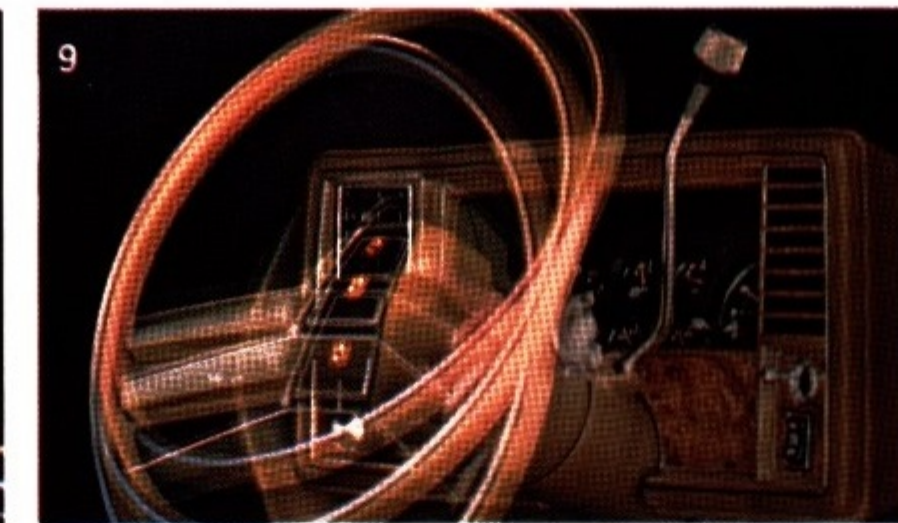
		Beige	Dk. Blue	Camel	Champagne	Jade	Maroon
<b>INTERIOR COLOURS</b>							
<b>MALIBU CLASSIC SPORT SEDANS/COUPES</b>							
Standard front bench seat and optional 55/45 split front seat	Cloth (Standard)	X	X			X	X
	Vinyl (Optional)	X	X	X	X	X	X
Optional Special Custom Interior with 55/45 split front seat	Custom Cloth	X	X		X	X	X
Optional bucket seats (coupes only)	Cloth		X	X		X	X
	Vinyl		X	X	X	X	X
<b>MALIBU CLASSIC WAGONS</b>							
Standard front bench seat and optional 55/45 split front seat	Cloth (Standard)		X	X			X
	Vinyl (Optional)		X	X	X		X
<b>MALIBU SPORT SEDANS/COUPES</b>							
Standard front bench seat	Vinyl		X	X		X	X
<b>MALIBU WAGONS</b>							
Standard front bench seat	Vinyl		X	X		X	X
Optional Custom bench seat	Custom Vinyl		X	X			X

	Beige	Black	Blue, Dark (Metallic)	Blue, Light (Metallic)	Brown, Light (Metallic)	Brown, Medium (Metallic)	Champagne (Metallic)	Cream	Green, Light Jade (Metallic)	Green, Jade (Metallic)	Maroon, Light (Metallic)	Maroon (Metallic)	Silver (Metallic)	White
Beige	X	X	X											X
Black		X												X
Blue, Dark (Metallic)		X	X	X										
Blue, Light (Metallic)			X											
Brown, Light (Metallic)				X	X									
Brown, Medium (Metallic)				X	X									
Champagne (Metallic)				X	X	X								
Cream					X	X								
Green, Light Jade (Metallic)										X				
Green, Jade (Metallic)				X	X					X				
Maroon, Light (Metallic)				X	X						X	X		
Maroon (Metallic)				X	X							X		
Silver (Metallic)					X								X	X
White				X	X	X	X	X	X	X	X	X		

**CUSTOM TWO-TONE COLOURS AVAILABLE:**

Int. Colour:	Int. Colour:	Int. Colours:	Int. Colours:	Int. Colour:	Int. Colour:	Int. Colours:
Beige or Camel	Jade	Beige, Dk. Blue, or Camel	Beige or Camel	Champagne	Jade	Beige, Camel, or Maroon
Beige/Lt. Brown*	Black/Green, Lt. Jade*	Blue, Dk./Blue, Med*	Brown, Med./Brown, Lt.*	Champagne/Cream	Green, Lt. Jade/ Green, Jade*	Maroon/ Maroon, Lt.*

**Vinyl roof colours available:** Black, white, dark blue\*, light jade green\*, maroon\*, beige, champagne\*. Check your dealer for complete information on vinyl roof colour availability.  
 \*Metallic







Malibu Classic Wagon

# WAGON STANDARD FEATURES

Malibu Wagon, as you might expect, is a talented handler of loads.

What may come as a surprise is how well it handles a road. With a wheelbase just 108.1 inches long, Malibu has coupe-like agility in tight parking spots. It is a quick, responsive vehicle with a smooth ride.

We think you'll truly enjoy driving it.

There's room for up to six people. Or, with the back seat down, more than 71 cubic feet of cargo space.

Standard features include power steering and power front disc brakes, radial tires, V6 engine, Full Coil suspension, full wheel covers and steel-reinforced rear bumper.

In short, it's a very nice wagon. It's also a very nice car.

Find wagon power teams, recommended service intervals and still more standard features on pages 12-13. Wagon exterior and interior colours shown on page 15.



**Big-load space.** Lift a handle and the back seat folds down, creating a stretch of 81.2 inches from front seat to tailgate. There is 71.8 cu. ft. of cargo space in Malibu Classic, 72.4 cu. ft. in Malibu.



**Out-of-sight floor storage.** A roomy spot located below the floor in the rear cargo area for storing purchases or valuables you carry along daily. Tuck small items in bins located at each side of cargo area.



**Versatile hatchgate.** Flip up the top window (above) and you can drop off packages when you're in a tight parking spot. Or open hatchgate fully (below) when you've bulky items to load. Hatchgate opening measures 27.8 in. high, 51.6 in. wide at belt and 54.0 inches wide at floor.



Malibu Wagon.

# WAGON OPTIONS

Give your Malibu wagon some nice extra touches with the options on this page that fit your personal tastes and fill your personal needs. Even more wagon options may be found on pages 14-15.

## DIMENSIONS: Millimetres (Inches)

EXTERIOR	Wagon	
Wheelbase	2745	(108.1)
Length (overall)	4911	(193.4)
Width (overall)	1826	(71.9)
Height (Loaded)	1417	(55.8)
Fuel Tank Capacity: litres (gals.)	66.2	(14.6)

## INTERIOR

Head Room—Front	985/978*	(38.8/38.5*)
Leg Room—Front	1086	(42.8)
Shoulder Room—Front	1453/1465*	(57.2/57.7*)
Hip Room—Front	1326	(52.2)
Head Room—Rear	978	(38.5)
Leg Room—Rear	912	(35.9)
Shoulder Room—Rear	1450	(57.1)
Hip Room—Rear	1412	(55.6)
Floor Length—Front Seat to Tailgate	2064	(81.2)
Width Between Wheelhousings	1108	(43.6)
Total Cargo Volume: litres (cu. ft.)	2049/2033*	(72.4/71.8*)

\*Malibu Classic

Coupe and sedan dimensions shown on page 13.



**Roof carrier.** Perfect for luggage on family trips; leaves interior free for passengers' comfort. Comes with adjustable front and rear rails.



**Power tailgate window release.** A touch of a dashboard button releases the swing-up window. It then lifts easily upward to facilitate loading and unloading.



**Electric rear window defogger.** Electric heating elements help keep rear window free of fog or frost.



**Deluxe load floor carpeting.** Matches the colour of passenger compartment carpeting. Helps prevent scratches when loading or unloading luggage or other bulky objects.



**Cargo area security package.** Adds lockable covers to bins at each side of cargo area plus a lock on the floor compartment shown on opposite page.



**Rear window air deflector.** Helps keep snow, dust and moisture from accumulating on the rear window while driving.



**The GM Continuous Protection Plan.** Offers service protection in addition to that provided by GM's new vehicle limited warranty. Ask your dealer about this option.

## A WORD ABOUT ENGINES

Malibus are equipped with GM-built engines produced by various divisions of General Motors Corporation and GM of Canada. Please refer to the Malibu Power Teams chart on page 13 or see your dealer for details.

## A WORD ABOUT ASSEMBLY, COMPONENTS AND OPTIONAL EQUIPMENT IN THESE VEHICLES.

The vehicles described in this brochure are assembled at facilities of General Motors of Canada Limited or car Divisions of General Motors Corporation or at facilities of General Motors Corporation operated by the GM Assembly Division. These vehicles incorporate thousands of different components produced by General Motors of Canada Limited and related companies and by various suppliers to General Motors of Canada Limited or related companies. From time to time during the manufacturing process, it may be necessary, in order to meet public demand for particular vehicles or equipment, or to meet federally mandated emission and safety requirements or fuel economy guidelines, or for other reasons, to produce vehicles with different components or differently sourced components than initially scheduled. All such components have been approved for use in our products by General Motors of Canada Limited or related companies and will provide the quality performance associated with our name.

Please note that certain optional equipment can be ordered only in conjunction with other optional equipment. Also, upgrading from specified standard equipment may be necessary when certain optional equipment is ordered. Ask your sales representative for details.

With respect to extra cost optional equipment, make certain you specify the type of equipment you desire on your vehicle when ordering it from your dealer. Some options may be unavailable when your car is built. Your dealer receives advice regarding current availability of options. You may ask the dealer for this information. GM also requests the dealer to advise you if an option you ordered is unavailable. We suggest you verify that your car includes the optional equipment you ordered or, if there are changes, that they are acceptable to you.

All illustrations and specifications contained in this catalogue are based on the latest product information available at time of publication approval. The right is reserved to make changes at any time, without notice, in prices, colours, materials, equipment, specifications and models, and to discontinue models. Some of the equipment shown or described throughout this catalogue is available at extra cost. Check with your Chevrolet dealer for complete information.



**Malibu Classic Sport Coupe.**

