



LINCOLN

2002 NAVIGATOR



02 American Icon.

04 No Compromises.

Pure Strength. 06


10 Making Tracks.

Quiet Refuge. 14

18 The Features.

The Facts. 22

23 The Palette.

A close-up, low-angle shot of the front of a Lincoln Navigator. The image focuses on the chrome grille with vertical slats, the Lincoln logo badge, and a portion of the headlight. The background is a blurred forest scene, suggesting an off-road or natural setting.

How did Lincoln Navigator become an icon so quickly?

Perhaps it's the allure of power. The refinement

of its off-road technology. Or its refusal to let

anything compromise the size of your dreams.





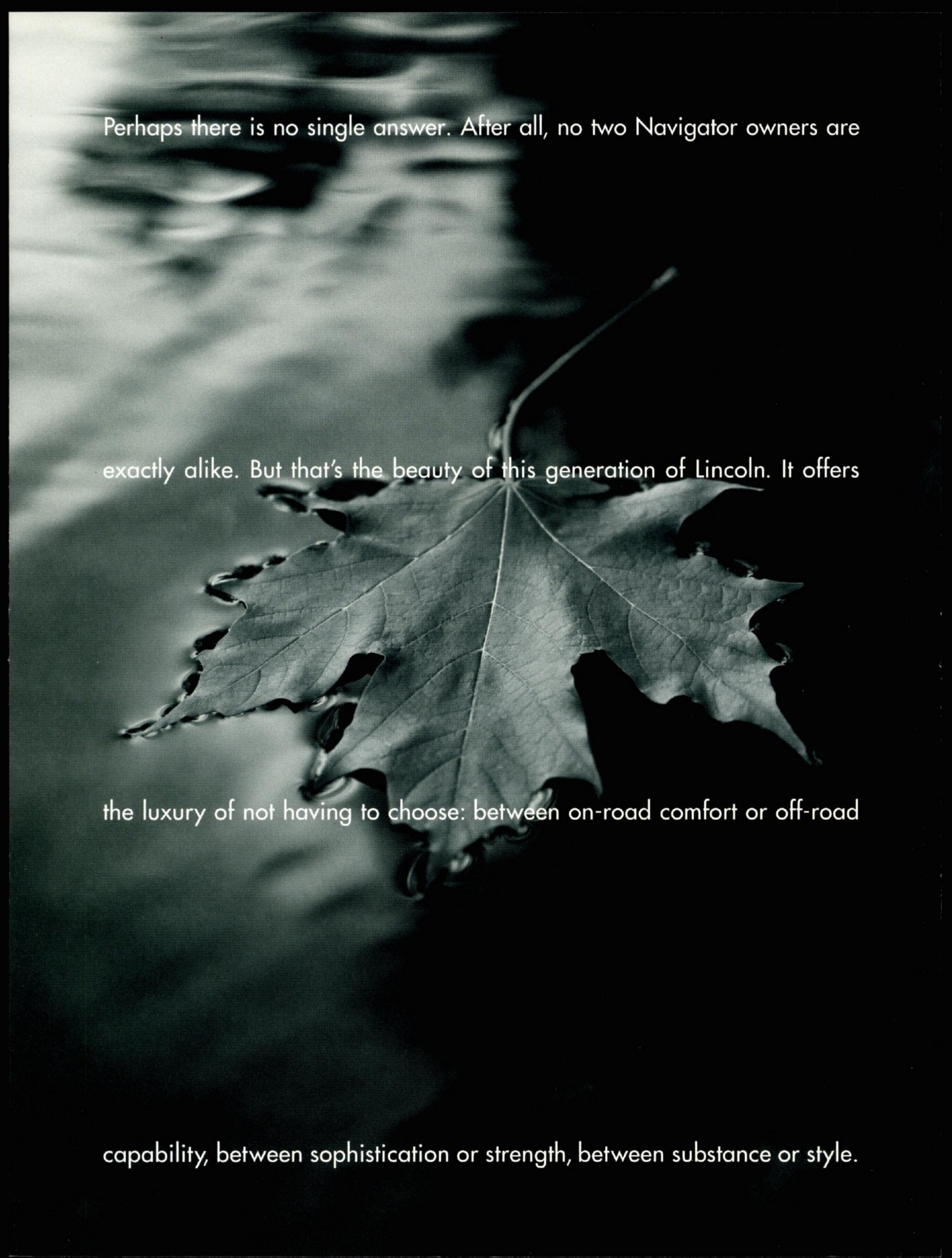
04

Perhaps there is no single answer. After all, no two Navigator owners are

exactly alike. But that's the beauty of this generation of Lincoln. It offers

the luxury of not having to choose: between on-road comfort or off-road

capability, between sophistication or strength, between substance or style.





A 5.4-liter 32-valve

V8 engine creates

300 hp at 5000 rpm

and 355 lb-ft of torque

at 2750 rpm. And the

power of Navigator is

matched by its poise.

stabilizer bars front

and rear maintain

consistent composure.





Whether you choose a

2WD or 4WD model,

Navigator's air spring

rear suspension will

preserve the ride

comfort of a Lincoln.

On 4WD models,

Control Trac® lets

you shift-on-the-fly

to optimize traction.

There's no doubt Lincoln Navigator was designed with wide open spaces in mind. Clearly evidenced by its ability to quickly and easily accommodate extra passengers or extra cargo. You'll have the power to get precisely where you want to be. And more than enough amenities to satisfy your every desire. Plus the security of knowing you can do it again with a moment's notice.





On any road, Navigator is a most luxurious place

of refuge. The three rows of seating arrangements are more

than enough to prove it. Reservations for up to eight.

Wide open spaces, all around.



Standard **side-impact head/chest airbags**¹ add another level of safety and security. When used with properly worn safety belts, they provide the driver and front passenger with added protection in a side collision.

¹Always wear your safety belt and secure children in the rear seat.

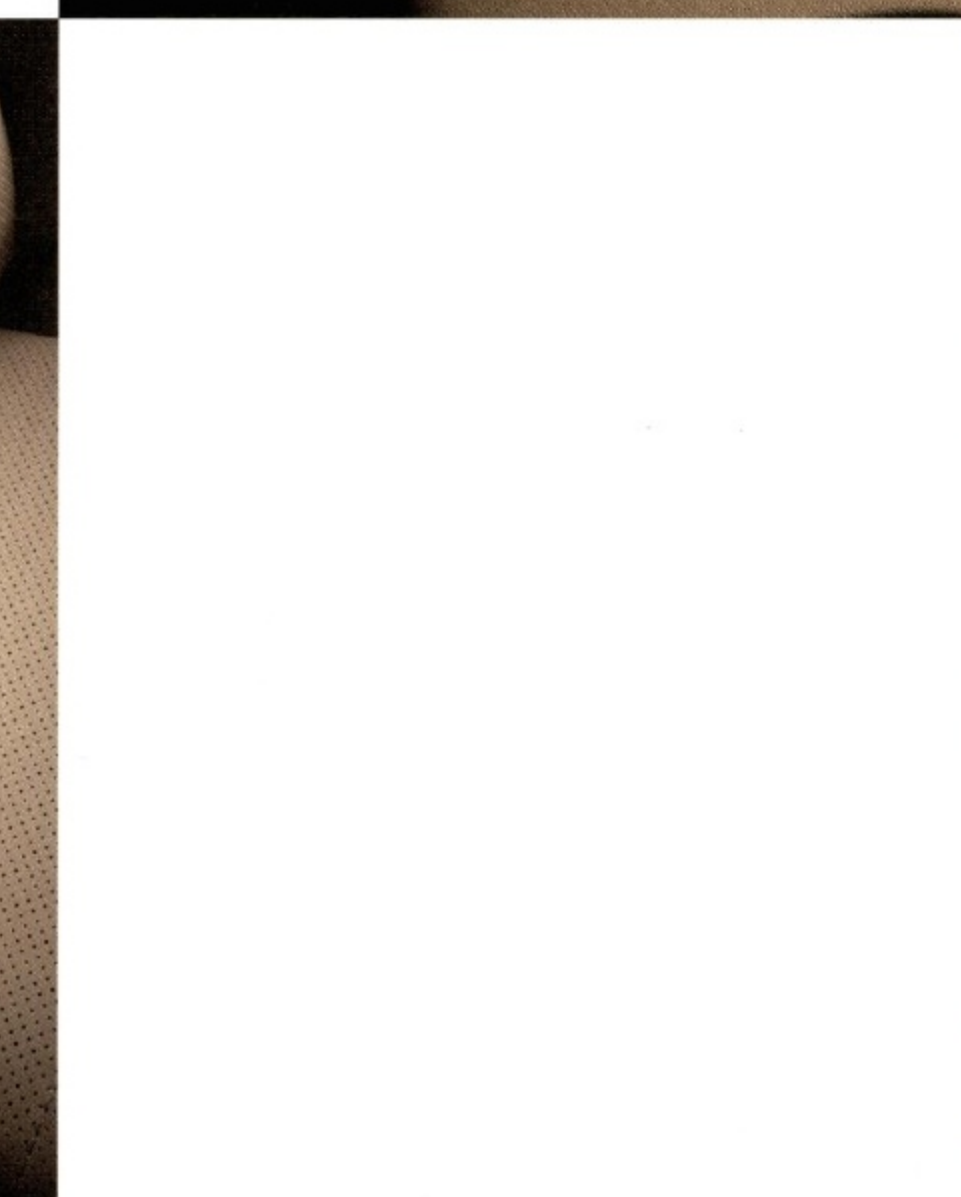
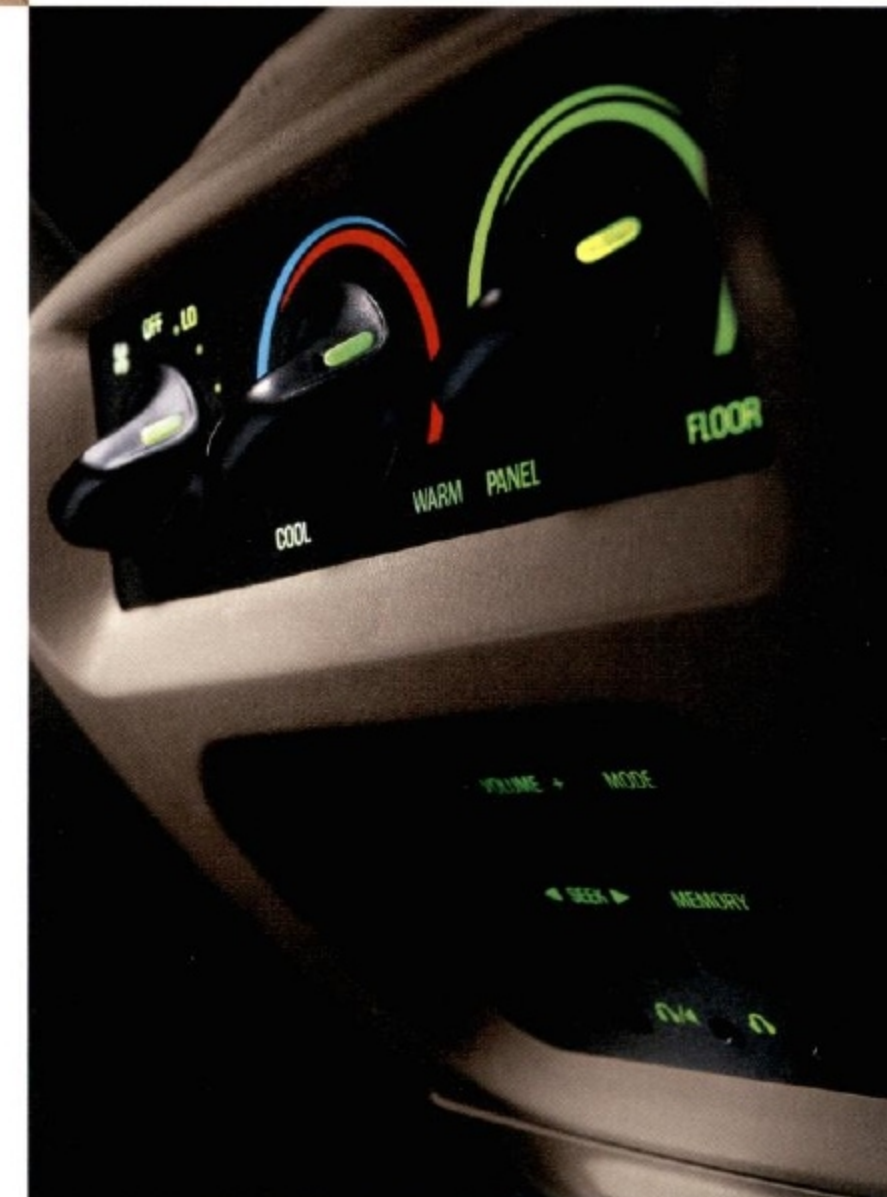


Standard on the 2002 Navigator console is the **auxiliary climate control**, which allows the rear-seat passengers to adjust temperature, fan speed and air distribution to their liking. Additionally, the front floor console has rear audio controls, which allow passengers in the second row to adjust the volume and station selection, as well as listen through their headphones.

Lincoln's available Navigation System with the **Global Positioning System** calibrates where you are relative to your final destination and illuminates the results on a conveniently located, easy-to-see, five-inch color console display.



The available power **moonroof** on the 2002 Lincoln Navigator welcomes in the sun, moon and stars. Or, if you prefer, just a nice touch of breeze. Controls for the moonroof are located in a stylish, overhead mini console for easy access.

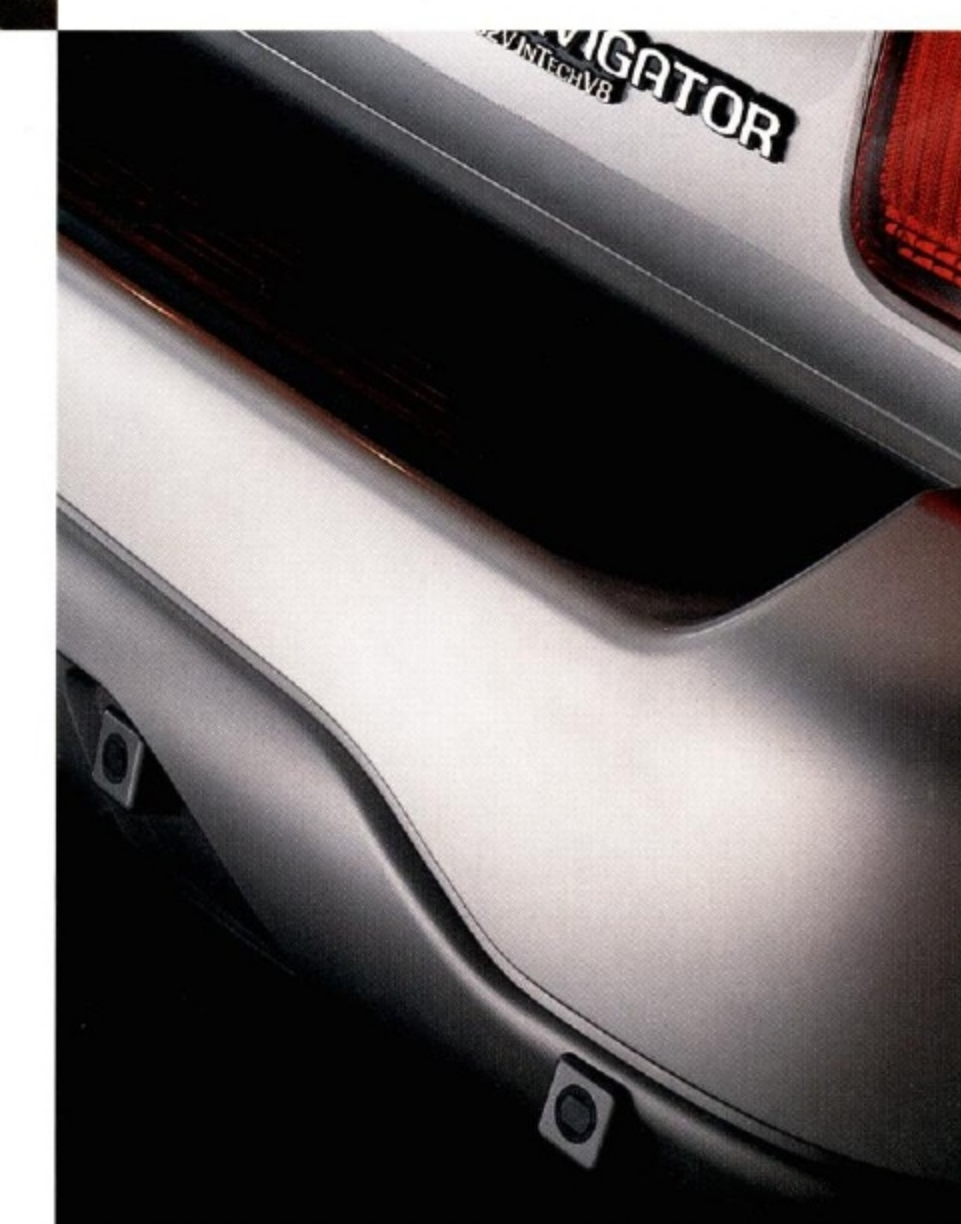


Navigator is available with **large power-folding exterior mirrors**. To make room for tight parking or in your garage, the mirrors fold in at the touch of a button. They're electrically heated to quickly melt ice and snow. They house prominent turn signals—visible to traffic behind you—that flash brightly when you activate Navigator's turn indicator. And they can be set to remember your preferred adjustment.



Because drivers come in varying sizes and stature, **power-adjustable brake and accelerator pedals** can travel up to three inches to assume the most comfortable driving positions. The driver's preferred pedal settings will be retained in the memory system.

Lincoln Navigator's available **climate controlled seats** allow both the driver and front passenger to regulate the temperature of their seats—sending either cool or heated air up through the seat cushions, for additional comfort.



When backing up, the Navigator driver will benefit from the added convenience of Lincoln's available **Reverse Sensing System**. A clearly audible warning signal, which increases in intensity as an object is approached, alerts the driver to use extra caution.



An available **Alpine® Audiophile Sound System** with AM/FM stereo/cassette uses seven speakers, including a subwoofer, to create precise sound reproduction. To enhance the versatility of your audio system, the **Personal Audio System** is a feature that allows independent listening to different audio sources—radio, cassette or available CD. So when headphones are used in the rear seat, for example, front- and rear-seat passengers can listen to the same source or choose a different source.



The second-row **bucket seats** can be quickly folded down flat in four easy steps, further increasing Lincoln Navigator's cargo area. Clear instructions are provided.



In the second- and third-row seating areas, luxury extends beyond soft leather trim to the **climate control**. Through a clever use of duct passages, temperate air reaches every passenger, courtesy of the auxiliary climate control—keeping everyone comfortable.



The four-wheel drive Navigator uses the **Control Trac® 4WD system** to select one of three different modes to accommodate varying on-road conditions. A rotary switch that's within easy reach facilitates effortless selection. Additionally, the "Automatic" setting chooses between two- or four-wheel drive as various road conditions dictate.



Navigator's powerful and responsive 5.4-liter 32-valve **DOHC InTech™ V8 engine** delivers a very impressive 300 horsepower along with 355 lb-ft of torque. In addition, your Lincoln Navigator is able to travel 100,000 miles without a scheduled tune-up.¹

¹Under normal driving conditions with routine fluid and filter changes.



Electronic Automatic Temperature Control automatically adjusts—and continually maintains—the interior temperature to your preferred level. Additionally, the blower will wait to switch itself on until the air to be distributed has reached the preset level.



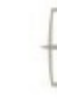
In case of a complete coolant loss, the **fail-safe cooling system** goes from eight-cylinder operation to alternating banks of four cylinders—helping to lower engine temperature.



Navigator offers a standard four-wheel disc brake and **four-wheel Anti-lock Brake System**—both of which contribute to improved control by reducing wheel lockup during hard braking on most surfaces. More importantly, they help increase driver confidence.



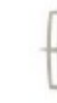
HomeLink® Universal Transceiver allows the Lincoln Navigator driver to quickly and easily program a remote (engineered right into the Navigator's visor) to activate garage doors plus any two additional home-based devices, such as patio or driveway lights.



To ensure we're offering our customers the best service possible, we proudly offer the **Lincoln Personal Consultant**. Just visit our Web site at lincolnvehicles.com/pc and one of our manufacturer's representatives will help with anything from price quotes to product features to arranging a test drive at your local dealer—at no cost or obligation.



The **SecuriLock™** passive anti-theft system uses an encoded key to help protect against theft. If a nonencoded key or ignition bypass is detected, the ignition disables itself.



The 2002 Lincoln Navigator's tip/fold/lock **third-row bench seating** is capable of being folded and locked to an upright position, or removed with equal ease—quickly accommodating extra passengers or extra cargo, depending on your individual needs.



Because Navigator's front **wipers** are speed-sensitive, they automatically adjust their speed in relation to the vehicle's road speed. This eliminates the need for constant, manual adjustments, while enhancing the driver's visibility under adverse conditions.



Gracing Lincoln Navigator's elegant **wood- and leather-trimmed steering wheel** are duplicate controls for cabin climate and audio, as well as speed control adjustments. This allows you to keep your hands on the wheel and your eyes on the road at all times.

Drivetrain

| | |
|----------------------|--|
| ENGINE | |
| LAYOUT | Front engine, rear-wheel drive, available 4-wheel drive |
| TYPE | DOHC 32-valve InTech™ V8 with electronic engine control system |
| CONSTRUCTION | Cast iron block with aluminum heads |
| DISPLACEMENT | 5.4 liter/330 cu in |
| BORE & STROKE | 90.2 mm x 105.8 mm/3.55 in. x 4.17 in. |
| COMPRESSION RATIO | 9.5:1 |
| HORSEPOWER | 300 @ 5000 rpm (SAE net) |
| TORQUE | 355 lb-ft @ 2750 rpm (SAE net) |
| AIR INDUCTION SYSTEM | Long runner intake with tuned plenum |
| FUEL DELIVERY | Sequential multi-port electronic fuel injection |
| FUEL REQUIREMENT | 91 octane (minimum) |
| COOLING SYSTEM | Fail-safe cooling |

| | |
|---------------------------------------|---|
| TRANSMISSION AND TRANSFER CASE | |
| TYPE | 4-speed electronic automatic overdrive with overdrive lockout |
| AXLE RATIO | 3.73:1 (limited slip differential) |
| CONTROL TRAC® 4WD SYSTEM | Optional; 3 selectable drive modes, electronically controlled |

Chassis

| | | |
|-------------|-----|---|
| BODY | | Body on fully boxed ladder frame construction |
| SUSPENSION | 2WD | Front: Independent Short- and Long-Arm with stabilizer bar and coil springs Rear: 5-link load-leveling with stabilizer bar and air springs |
| | 4WD | Front: Independent Short- and Long-Arm with stabilizer bar and torsion bar Rear: 5-link load-leveling with stabilizer bar and air springs |

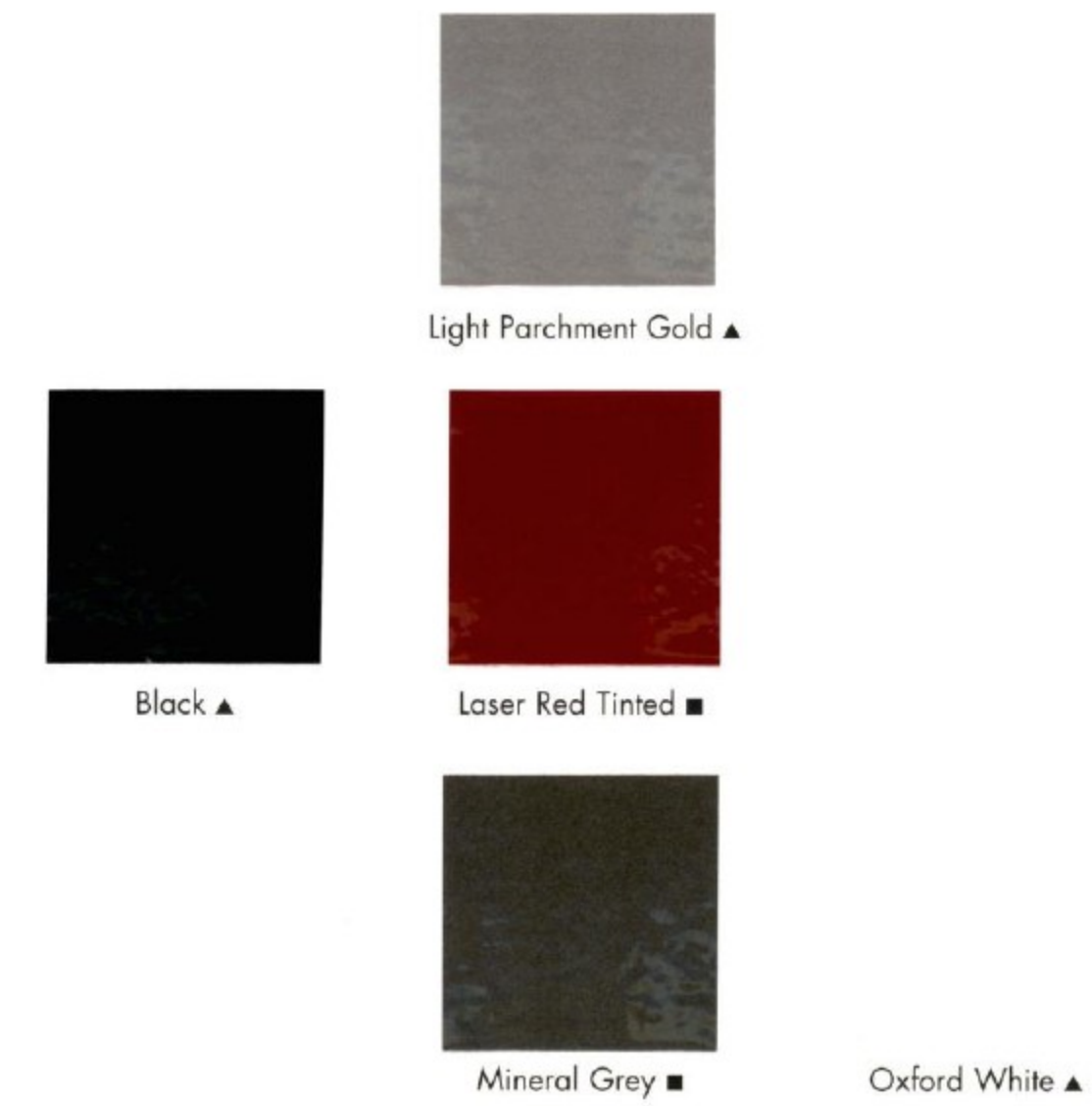


| | | | |
|---|---------------|---|-----------------------|
| SHOCK ABSORBERS | 2WD | Front: Gas-pressurized | Rear: Gas-pressurized |
| | 4WD | Front: Load-leveling air | Rear: Gas-pressurized |
| AIR SUSPENSION | 2WD | Rear load-leveling system | |
| | 4WD | Height-adjustable and 4-corner load-leveling system | |
| STEERING | Type | Speed-sensitive, power-assisted | |
| | Overall ratio | 2WD | 16.1:1 |
| Turning circle | 2WD | 40.4 ft diameter | |
| | 4WD | 40.5 ft diameter | |
| WHEELBASE | | 119.0 in. | |
| TRACK | | Front: 65.4 in. | Rear: 65.5 in. |
| BRAKES | | | |
| Power-assisted 4-wheel disc, Anti-lock Brake System (ABS) | | | |
| WHEELS | | | |
| 17-inch cast aluminum | | | |
| TIRES | 2WD | P275/60R17 outlined white lettered all-season | |
| | 4WD | P255/75R17 outlined white lettered all-terrain | |
| CURB WEIGHT | 2WD | 5424 lb | |
| | 4WD | 5774 lb | |
| GROUND CLEARANCE | | 8.5 in. | |

Towing¹

| | | |
|---------------------------|-----|---|
| CLASS | | Class III/IV with load-distributing hitch receiver |
| TRAILER WEIGHT | 2WD | 8900 lb max. |
| | 4WD | 8000 lb max. |
| TONGUE WEIGHT | 2WD | 890 lb max. (Class IV) |
| | 4WD | 800 lb max. (Class IV) |
| STANDARD EQUIPMENT | | 7-pin trailer wiring harness; heavy-duty flashers; Class III hitch receiver (frame-mounted); auxiliary transmission oil cooler |

Exterior



Interior and Exterior Color Combinations

| | | | | | |
|------------------|----------------------|-------|------------------|--------------|--------------|
| | Light Parchment Gold | Black | Laser Red Tinted | Mineral Grey | Oxford White |
| Medium Parchment | ● | ● | ● | ● | ● |
| Medium Graphite | | ● | ● | ● | ● |

Interior fabric and exterior color combinations are not available on all models. Please see your dealer for availability. Navigator Limited Edition is only available in Monochromatic Black Clearcoat with Medium Parchment interior.

▲ Clearcoat ■ Clearcoat Metallic

Interior



Limited Edition

- INTERIOR TRIM—in Medium Parchment
- PAINT—Monochromatic Black Clearcoat with black front and rear fascias, bodyside cladding and running boards
- REVERSE SENSING SYSTEM—with in-cabin speaker for audible warning signal
- WHEELS—unique 17-inch machined aluminum

Available Equipment

In addition to or in place of the standard equipment, the following options are available:

- ENTERTAINMENT SYSTEM—rear seat 6.8-inch retractable overhead color LCD screen, 2 wireless headphones, remote control with VHS player; mounted in front center console⁵
- LICENSE PLATE BRACKET—front
- MIRRORS—power folding exterior
- MOONROOF—power, includes mini overhead console
- NAVIGATION SYSTEM—with the Global Positioning System, 5-inch color console display and voice instruction⁶
- RADIO—Alpine® Audiophile Sound System with AM/FM stereo/cassette, 7 premium speakers including subwoofer and speed-compensating volume control (each front door is equipped with 2 speakers) and Personal Audio System
- RADIO—front center console-mounted 6-disc CD changer
- REVERSE SENSING SYSTEM—with in-cabin speaker for audible warning signal
- SEATS—2nd-row 60/40 split bench with center-seat lap safety belt and leather seating surfaces
- SEATS—climate-controlled driver and front passenger
- SKID PLATE PACKAGE—includes fuel tank, transfer case and front differential/suspension protection package⁶
- WHEELS—17-inch chrome cast aluminum

¹Navigator is not intended to be used for snowplowing. ²Width measurement includes mirrors. ³54.5 cu ft behind 2nd row with seat removed; 17.9 cu ft behind 3rd row. ⁴Always wear your safety belt and secure children in the rear seat. ⁵Requires 6-disc CD changer. ⁶Available equipment on 4-wheel drive models.

Web Site

For additional information on Navigator or other fine Lincoln automobiles, find us on the Web at

lincolnvehicles.com



Standard with all 2002 model year vehicles is 3-year/36,000-mile Lincoln Complimentary Maintenance—a no charge, scheduled maintenance service at 5,000 mile or 6 month intervals, whichever occurs first, in accordance with your vehicle's scheduled maintenance guide. Six additional wear items will also be covered: spark plugs (except in California), shock absorbers, clutch disc, engine belts and hoses, brake pads and linings, and wiper blades. Available in the U.S. (may be available in other countries). See your dealer for more details.



Ford Credit provides the convenience of one-stop shopping with a variety of simple-to-understand purchase or Red Carpet Lease programs available right at the dealership. For more information, ask your dealer for details, or visit us on the Web at www.fordcredit.com



Following publication of this brochure, certain changes in standard equipment, options, prices and the like, or product delays may have occurred which would not be included in these pages. Your Lincoln dealer is your best source for up-to-date information. Lincoln reserves the right to change product specifications at any time without incurring obligations. 2002 EPA mileage estimates were unavailable when this brochure was printed. Options shown or described in this brochure are available at extra cost and may be offered only in combination with other options or subject to additional ordering requirements or limitations. Information based on AAMA specifications.

Accommodations and Dimensions

| | | | |
|---------------------|--|------------------------------|---|
| HEADROOM (in.) | 39.6 1st row; 39.7 2nd row; 37.8 3rd row | OUTSIDE DIMENSIONS 2WD (in.) | 75.2 height; 92.9 width ² ; 206.0 length |
| LEGROOM (in.) | 41.2 1st row; 38.6 2nd row; 36.3 3rd row | OUTSIDE DIMENSIONS 4WD (in.) | 76.7 height; 92.9 width ² ; 206.0 length |
| HIPROOM (in.) | 57.9 1st row; 58.0 2nd row; 50.2 3rd row | FUEL CAPACITY (gal) | 30.0 |
| SHOULDER ROOM (in.) | 63.3 1st row; 63.4 2nd row; 52.3 3rd row | CARGO VOLUME (cu ft) | 104.7 maximum ³ |

Safety and Security

- AIRBAGS—driver and front passenger and front seat-mounted side-impact head/chest⁴
- ANTHINTRUSION DOOR BEAMS
- BRAKE SHIFT INTERLOCK
- BRAKES—power 4-wheel disc Anti-lock Brake System (ABS)
- CHILD-SAFETY SEAT TETHER ANCHORS—in all 2nd- and 3rd-row seating positions
- KEYLESS ENTRY KEYPAD—on driver's door
- REMOTE KEYLESS ENTRY SYSTEM—2 key fobs with panic alarm and illuminated entry
- SAFETY BELTS—3-point outboard restraints with 1st- and 2nd-row height-adjustable D-rings and 3rd-row center-seat lap safety belt
- SECURILOCK™—passive anti-theft system
- WARNING CHIME SYSTEM—door or liftgate ajar, fasten safety belt reminder, headlamp or parking lamps on and key-in-ignition
- WARNING LIGHT SYSTEM—door or liftgate ajar, anti-lock brakes, check engine, airbags⁴, safety belt reminder, high beams on, parking brake on, charge system, engine temperature, check suspension, low washer fluid, anti-theft alarm and low fuel lamps

Interior Amenities

- ACCESSORY DELAY—power, provides up to 10 minutes for closing windows and moonroof (if equipped)
- AIR CONDITIONING—Electronic Automatic Temperature Control with duplicate steering wheel controls, 2nd-row bi-level floor and center console vent controls and auxiliary fan controls
- ASSIST HANDLES—color keyed, 2 in 1st row, 2 in 2nd row and 1 on liftgate
- AUXILIARY CLIMATE CONTROL—for rear occupants
- BATTERY SAVER
- CARGO AREA—cargo net, tie-down hooks and storage bins
- CARPETING—color keyed with scuff plates at every door and molded in-step pad on 2nd-row for easy 3rd-row access
- COAT HOOKS—2 in 2nd row, 2 in cargo area
- CONSOLE—1st-row floor with storage bin, cupholders, coin holder, tissue box holder, rear audio/climate controls and headphone jacks
- CONSOLE—2nd-row floor with leather padded armrest, cupholders, storage bin and storage tray
- CONSOLE—overhead with map lamps, power-flip rear quarter window switches, storage and electronic display for distance to empty, compass and average fuel economy
- CUPHOLDERS—2 in instrument panel, 4 in 1st-row floor console, 2 in 2nd-row floor console and 2 in 3rd-row quarter trim panel
- DEFROSTER—rear window
- DOOR TRIM PANELS—color keyed with genuine wood insert, grab handle, carpeted lower portion and front door puddle lamp
- FLOOR MATS—carpeted front and rear with Lincoln logo
- GLOVE BOX—illuminated with ergonomic driver's side handle
- HOMELINK™ UNIVERSAL TRANSCEIVER—with garage door opener
- INSTRUMENT CLUSTER—analog cluster with speedometer, tachometer, odometer, trip odometer, voltmeter, engine oil pressure, coolant temperature and fuel gauges
- INSTRUMENT PANEL—soft touch, vinyl wrapped with genuine wood insert and driver storage bin under steering column
- LIGHTS—interior front dome lamp, 1st- and 2nd-row map lamps, rear cargo overhead lamp, ashtray and under-hood lamps
- MAP POCKETS—located on front seatbacks with closeable lid
- MIRROR—electrochromic (auto-dimming) rearview mirror
- POWER-ADJUSTABLE BRAKE AND ACCELERATOR PEDALS—with memory feature
- POWER POINTS—12-volt outlets in instrument panel and in rear of 1st-row floor console
- RADIO—premium AM/FM/stereo/cassette with 4 speakers, 2nd-row controls, speed-compensating volume control and Personal Audio System
- SEATS—quad bucket seats with leather seating surfaces, driver's seat with memory feature, dual 6-way power front low-back bucket seats with power lumbar support, 2nd-row fold-flat seats and removable tip/fold/lock 3rd-row bench seat with leather seating surfaces and easy install/remove roller system
- SPEED CONTROL—fingertip controls with tap-up/tap-down feature
- STEERING WHEEL—wood- and leather-trimmed power tilt with speed control, duplicate audio and climate controls
- VISORS—cloth covered with secondary visors and illuminated vanity mirrors
- WINDOWS—power, driver's side with express-down feature, illuminated switches and power-flip rear quarter windows

Exterior Features

- ANTENNA—concealed in passenger side rear quarter glass
- BODYSIDE CLADDING—color keyed with lower accent color and wheel-lip moldings
- BUMPERS—color keyed front and rear, 2.5 mph impact
- FOG LAMPS—clear lens complex reflector
- GLASS—solar tinted with Privacy Glass™ on rear doors, rear quarter windows and liftgate
- HEADLAMPS—wraparound complex-reflector lenses with automatic on/delay off
- LIFTGATE—with flip-up glass and gas cylinder lift assist
- LOCKS—power door locks and child-safety locks on rear doors
- LUGGAGE RACK—with adjustable cross rails and bright accents
- MIRRORS—power heated with memory and turn signal indicator
- RUNNING BOARDS—integrated and illuminated
- TAILLAMPS—dual complex reflector
- TIRE—under-body mounted 17-inch full-size spare
- TIRES—P275/60R17 outlined white lettered all-season (2WD) or P255/75R17 outlined white lettered all-terrain (4WD)
- TOW HOOKS—black, integrated into front bumper fascia
- TRAILER TOW GROUP—Class III frame-mounted hitch receiver, auxiliary transmission oil cooler, heavy-duty flashers and 7-pin trailer wiring harness
- WHEELS—17-inch cast aluminum
- WINDSHIELD WIPERS—speed-sensitive intermittent front; rear intermittent wiper/washer



L I N C O L N
A M E R I C A N L U X U R Y