

2002 Mercury Villager



02 introduction to Villager

06 amenities

14 technology

contents

16 safety features

18 specifications and features

19 exterior and interior colors

21 available equipment

The day is the same for everyone, 24 hours.

And weekends only last two days. How is it that Villager owners pack so much more living into the same amount of time?





02

Mercury Villager Estate in Estate Green Clearcoat Metallic with Light Parchment Gold Clearcoat Metallic accent.





Mercury Villager Sport in Black Clearcoat with Dark Shadow Grey Clearcoat Metallic accent.

It's been suggested that the ultimate luxury is time. Weekdays when you can actually fit everything in and still be home in time for dinner. Weekends that truly recharge and reunite the entire family. Villager was created to help you fully enjoy every moment you're on the go. With Estate or Sport models, the seats are so versatile they can be arranged in more than 60 different ways. And its amenities are so integrated, each member of your party should feel individually catered to.



Mercury Villager Estate in Black Clearcoat with Golden Mink interior. Shown with available equipment.

06 amenities



Stay cool with the available Electronic Automatic Temperature Control.



The available 6-way power driver's seat includes manual lumbar support.



Supersound System

The available Supersound System offers you an AM/FM stereo/cassette/single CD player with 6-disc CD changer. Rear seat occupants can even listen to their own music through headphones, thanks to Villager's Personal Audio System. You supply the headphones, we'll supply the rest.

HomeLink®

Integrated into the driver's visor, the available HomeLink® Universal Transceiver allows you to conveniently control up to three home devices—security gates, garage doors or home lights—from within the secure confines of Villager.



2nd- and 3rd-Row Folding Seats

Villager's available 2nd-row folding bucket seats open up your options. Recessed trays and cupholders integrated into the seatbacks hold beverages and food. And with the In-Track™ sliding seat system, recessed tracks make it easy to move the 3rd-row seat quickly to create even more cargo room.

Auxiliary Air Conditioning

Just because they took a back seat doesn't mean your rear passengers aren't in control. Thanks to available auxiliary air conditioning, occupants of Villager's rear seats get their very own controls and vents, located overhead within easy reach. Your passengers can dial the air flow fan speeds up or down and aim the flow of air to help keep cool.



AutoVision® Entertainment

With the available AutoVision® Entertainment System, rear-seat passengers can pass the time away watching their favorite videos on the roof-mounted 6.4-inch flip-down LCD screen. The videocassette player is conveniently located in the floor center console.



Under-Seat Drawer

Another one of those great Villager touches is the sliding drawer underneath the front passenger seat. Otherwise wasted space turns into a concealed storage area for your personal possessions.



Seating/Cargo Configurations

Villager was carefully designed to accommodate the needs of up to seven passengers. On Sport and Estate models, 2nd-row bucket seats, together with 3rd-row seating, can create more than 60 different seat configurations. It would take you more than a year of weekends to try them all out.

Dual Sliding Doors and Flip-up Liftgate

What good is 127.6 cubic feet of intelligently designed cargo volume if just getting to it is a hassle? Villager's cargo space is easy to get to, thanks to its dual sliding mid-body doors. And its rear liftgate features an available flip-up window that lets you access the rear cargo area without disturbing the passengers.

Under-Seat Drawer

Another one of those great Villager touches is the sliding drawer underneath the front passenger seat. Otherwise wasted space turns into a concealed storage area for your personal possessions.



Mercury Villager Sport with two-tone Portland Grey interior. Shown with available equipment.



Rear Parcel Shelf

Definitely one of Villager's better ideas is this available three-position parcel shelf. With a durable cargo net to help secure loose gear and protect personal items, it's the perfect place to store up to 30 pounds of cargo safely.



**Overhead Console/
Conversation Mirror**

Located just above Villager's rearview mirror, the available conversation mirror lets you stay connected with your passengers. Pull down the convex-shaped mirror from overhead to keep a watchful eye on your kids, or converse with your travel companions without having to twist in your seat to make eye contact.

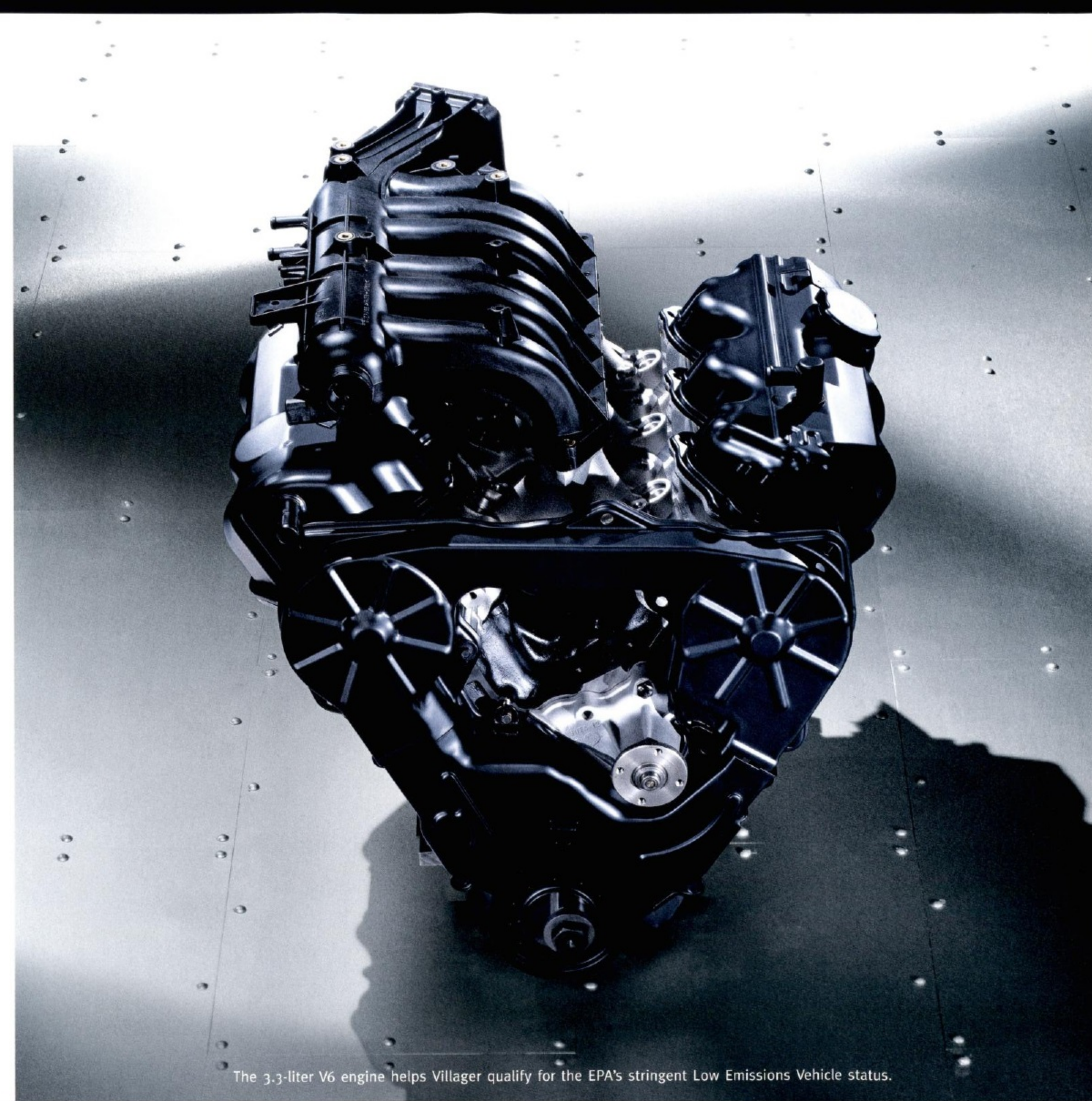


Eleven Cupholders

Villager offers a total of eleven front, middle and rear-seat cupholders to conveniently hold beverages for the driver as well as each passenger, some large enough to hold a 32-ounce drink.

14 **technology**

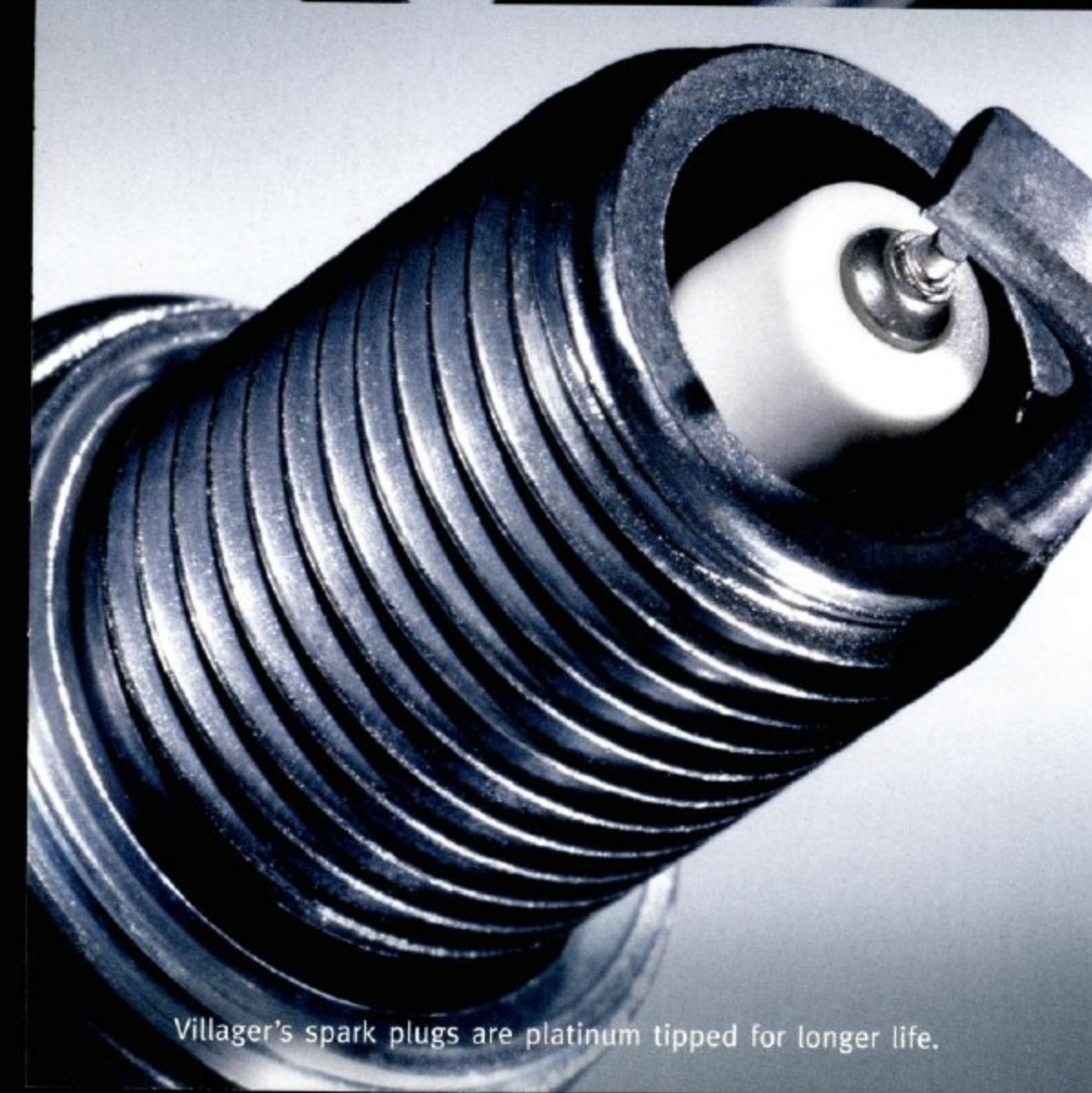
You probably wear a lot of different hats during your day. Villager's technology lets you wear them all: Transportation Coordinator, Social Director, Protector. And one of your favorites, Driver. If Villager's sleek, dynamic style screams out "not your typical minivan," then its car-like driving feel reinforces the theme. With its responsive V6 engine, power-assisted rack-and-pinion steering, and tenacious front-wheel drive, Villager earns your confidence while it engages your senses.



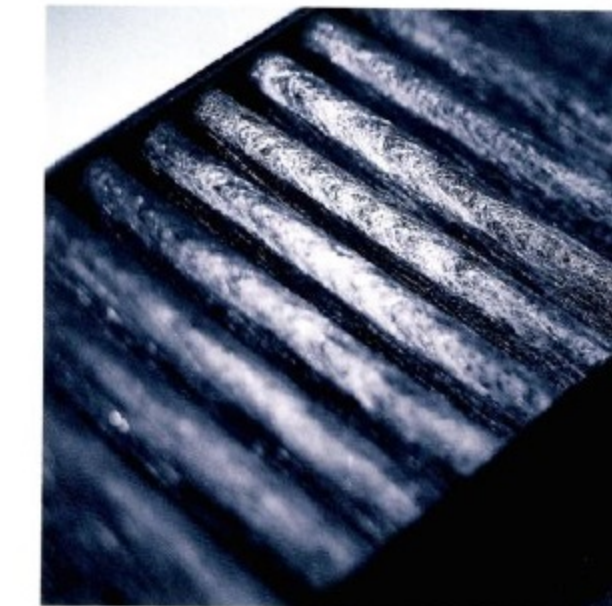
The 3.3-liter V6 engine helps Villager qualify for the EPA's stringent Low Emissions Vehicle status.



Up front, MacPherson struts and a stabilizer bar smooth things out.



Villager's spark plugs are platinum tipped for longer life.



Air Filtration

Villager's available auxiliary air conditioning includes the Cdor and Particulate Air Filtration System, a feature that reduces dust, pollen and odors in the cabin area.



Rack-and-Pinion Steering

It's not often that you can use the words "minivan" and "agile" in the same sentence. Unless you happen to be describing Mercury Villager. Its power rack-and-pinion steering makes handling Villager easy. In fact, with a turning radius of less than 40 feet, Villager is one people-mover that moves with ease.

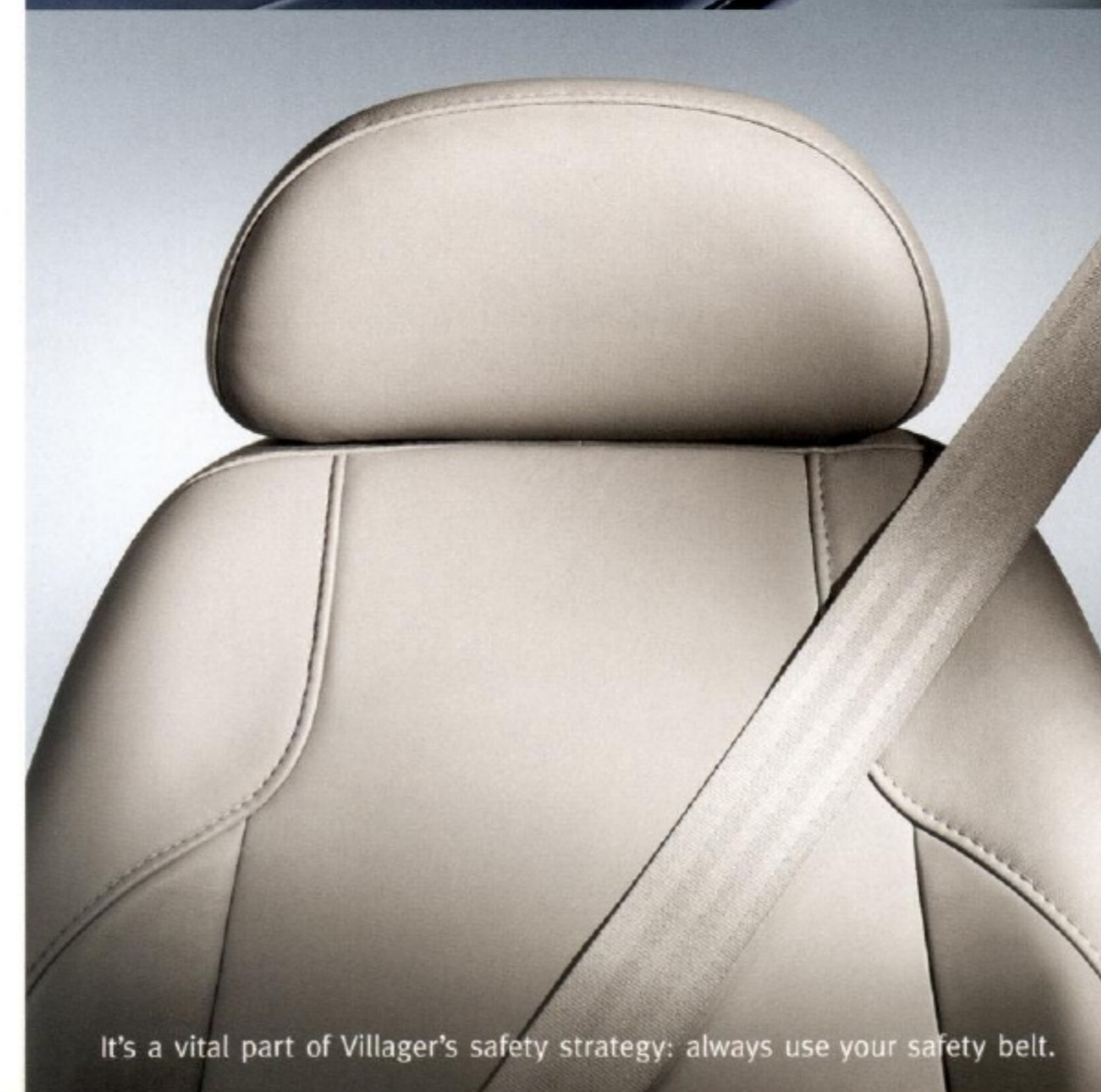
Your safety and security is Villager's highest priority. It has earned the National Highway Traffic Safety Administration's highest rating—five stars—in frontal crash performance. Concealed beneath its artfully shaped sheet metal is the science of safety: reinforced side doors with anti-intrusion beams and rear door child-safety locks, front and rear crumple zones, Lower Anchors and Tether anchors for Children (LATCH) and the security of an available 4-wheel Anti-lock Brake System.



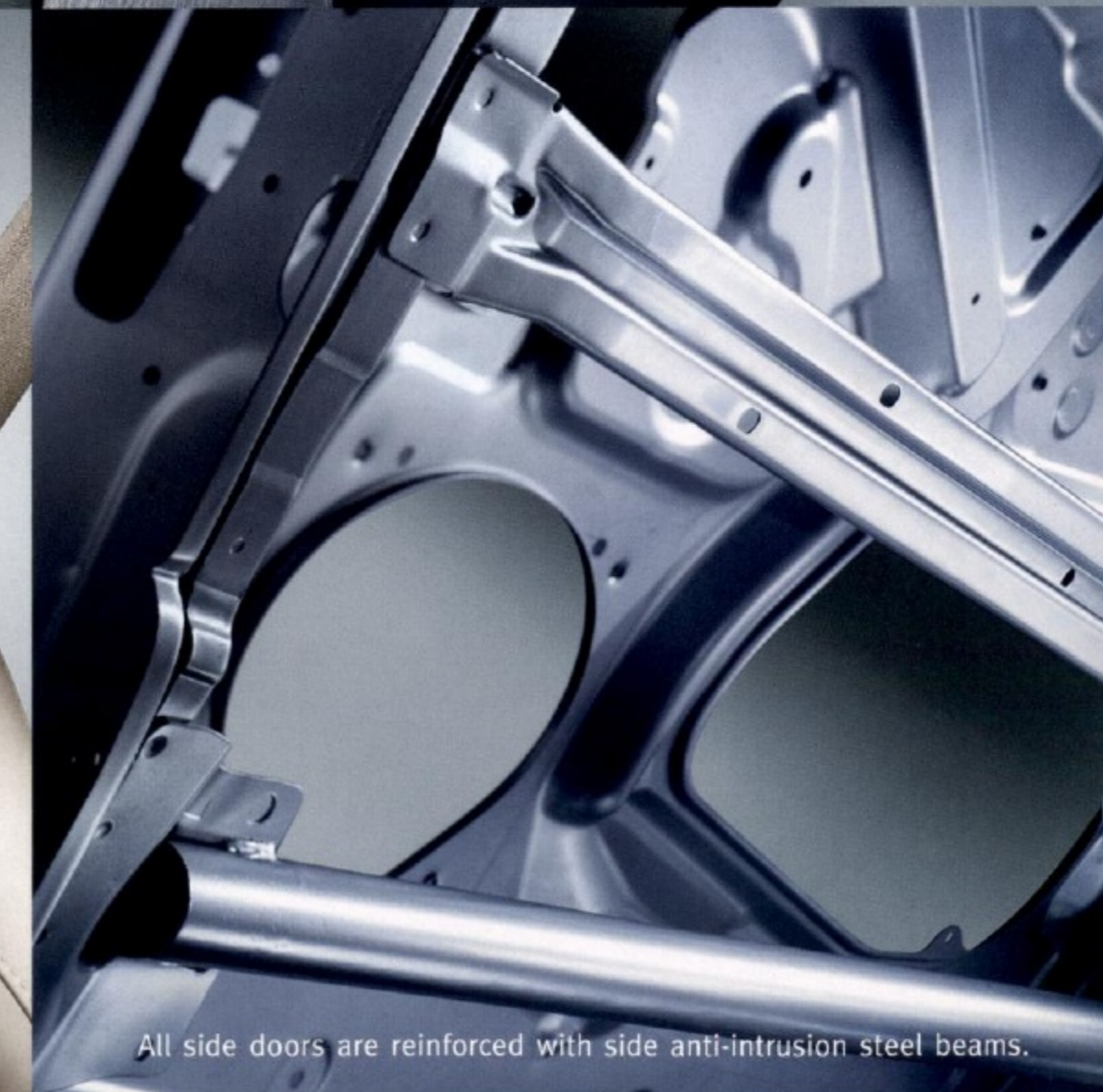
Rear crumple zones are part of Villager's safety engineering strategy.



An available Anti-lock Brake System helps you maintain steering control.



It's a vital part of Villager's safety strategy: always use your safety belt.



All side doors are reinforced with side anti-intrusion steel beams.



Fog Lamps

Integrated into Villager's lower front bumper, an available pair of precisely aimed fog lamps help shed some light on those misty morning drives that you occasionally find yourself in.



Side Folding Mirror

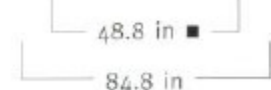
Good mirrors help make good drivers. Villager's large side mirrors give you the big picture of what's in the lanes to your left and right. Then, when you need to squeeze into a tight parking space—or simply emerge unscathed from your trip through the automatic car wash—you can quickly fold in Villager's side mirrors.

specifications

engine	Type	SOHC V6		
	Displacement	3.3 liter		
	Horsepower (SAE net)	170 @ 4800 rpm		
	Torque (SAE net)	200 lb-ft @ 2800 rpm		
	Fuel delivery	Sequential multi-port electronic fuel injection		
	Compression ratio	8.9:1		
	Scheduled tune-up interval	100,000 miles ¹		
transaxle	4-speed electronic automatic overdrive with overdrive lockout			
brakes	Power-assisted front disc and rear drum			
steering	Power-assisted rack-and-pinion			
	Curb-to-curb turning radius	39.9 ft		
suspension	Front	MacPherson gas-pressurized struts with front stabilizer bar		
	Rear	Single-leaf suspension with gas-pressurized hydraulic shock absorbers		
	Sport/Estate	Handling suspension includes rear stabilizer bar, rear shock absorbers, modified front spring rates and front struts		
capacities	Fuel tank	20.0 gal		
	Seating capacity	7 passengers		
	Cargo volume	Behind 3rd row: 32.2 cu ft (with seat moved forward 2 positions)		
		Maximum: 127.6 cu ft		
	Curb weight	3997 lb Villager; 4050 lb Sport/Estate		
Towing capacity	3500 lb max when properly equipped			
dimensions (inches)	Headroom	Front: 39.7	2nd row: 39.9	3rd row: 38.0
	Legroom	Front: 39.9	2nd row: 36.4	3rd row: 36.3
	Shoulder room	Front: 62.3	2nd row: 64.6	3rd row: 62.4
	Hiproom	Front: 56.5	2nd row: 64.9	3rd row: 49.0
	Length	194.9		
	Track	Front: 63.4	Rear: 63.4	
	Width (including mirrors)	84.8		
	Height (including luggage rack)	70.1		
	Wheelbase	112.2		

- Cargo dimensions with 2nd-row seats removed and 3rd-row bench seat folded and moved far forward.
- Cargo dimensions at the wheelhouse.

18 specifications and features



exterior and interior colors

exterior



sport exterior



estate exterior



interior



- Clearcoat Metallic
- ¹ Monotone color available on Villager Value.
- ² Two-tone color available on Villager Popular.
- ³ See your dealer for availability.

available equipment

Villager Value—available equipment

- AIR CONDITIONING—auxiliary with rear fan and audio controls and Odor and Particulate Air Filtration System
- BRAKES—4-wheel Anti-lock Brake System (ABS)

Villager Sport—available equipment

- BRAKES—4-wheel Anti-lock Brake System (ABS)
- RADIO—Premium AM/FM stereo/cassette with 4 speakers and Personal Audio System
- RADIO—6-disc CD changer
- RADIO—Supersound System with AM/FM stereo/cassette/single CD player, 7 speakers, front center console-mounted 6-disc CD changer and Personal Audio System
- SEATS—two-tone leather seating surfaces with memory driver's seat and 2 programmable positions

Villager Estate—available equipment

- AIR CONDITIONING—Electronic Automatic Temperature Control
- ELECTRONIC INSTRUMENT CLUSTER—digital speedometer, odometer, dual trip odometers, trip computer and outside temperature reading¹
- MOONROOF—power, with tilt/slide feature
- RADIO—Supersound System with AM/FM stereo/cassette/single CD player, 7 speakers, front center console-mounted 6-disc CD changer and Personal Audio System

Villager Popular—available equipment

- WHEELS—16-inch machined aluminum wheels with P215/65R16 black sidewall all-season tires

Villager Sport Plus—available equipment

- AUTOVISION® ENTERTAINMENT SYSTEM
- MOONROOF—power, with tilt/slide feature (n/a with AutoVision® Entertainment System)
- RADIO—Supersound System with AM/FM stereo/cassette/single CD player, 7 speakers, front center console-mounted 6-disc CD changer and Personal Audio System
- SEATS—two-tone leather seating surfaces with memory driver's seat and 2 programmable positions
- TRAILER TOW PACKAGE—spare tire, trailer harness and connector with Class II tow rating

Villager Estate Premium—available equipment

- AUTOVISION® ENTERTAINMENT SYSTEM
- MOONROOF—power, with tilt/slide feature (n/a with AutoVision® Entertainment System)
- TRAILER TOW PACKAGE—spare tire, trailer harness and connector with Class II tow rating



15-inch steel wheel with full wheel cover



16-inch machined aluminum

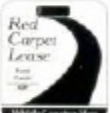


16-inch machined aluminum with silver-painted pockets



16-inch machined aluminum with gold-painted pockets

To ensure we're offering our customers the best service possible, we proudly offer the **Mercury Personal Consultant**. Just visit our Web site at www.mercuryvehicles.com/pc and one of our manufacturer's representatives will help with anything from price quotes to product features to arranging a test drive at your local dealer—at no cost or obligation.

 **FORD CREDIT** Ford Credit provides the convenience of one-stop shopping with a variety of simple-to-understand purchase or Red Carpet Lease programs available right at the dealership. For more information, ask your dealer for details, or visit us on the Web at www.fordcredit.com

Following publication of this brochure, certain changes in standard equipment, options, prices and the like, or product delays may have occurred which would not be included in these pages. Your Mercury dealer is your best source for up-to-date information. Lincoln Mercury reserves the right to change product specifications at any time without incurring obligations.

2002 EPA mileage estimates were unavailable when this brochure was printed. Options shown or described in this brochure are available at extra cost and may be offered only in combination with other options or subject to additional ordering requirements or limitations.



To help minimize the impact of this brochure on the environment, Mercury prints on recycle-grade coated paper that contains a minimum of 10% post-consumer waste.

standard equipment

Villager Value—The Villager Value and all Villager models are equipped with the following standard equipment:

- AIRBAGS—dual front airbags²
- AIR CONDITIONING—front manual temperature controls
- ANTI-INTRUSION BEAMS—front and sliding side doors
- ANTI-THEFT SYSTEM—detects illegal entry into vehicle through doors and liftgate and emits audible alarm, flashes headlamps and disengages starter motor system
- BATTERY SAVER—turns off interior lights after 30 minutes if a side door is left ajar or after 60 minutes if the liftgate is left open
- BRAKES—power-assisted front disc/rear drum
- BRAKE SHIFT INTERLOCK
- BUMPERS—color keyed front/rear 5 mph impact
- CARGO NETS—front and rear (front net not available with AutoVision® Entertainment System)
- CARPET—fully trimmed passenger and cargo compartment areas
- CUPHOLDERS—slide-out front mechanism with 2 adjustable holders (32-oz. capacity), 2—2nd-row holders (32-oz. capacity), 3—3rd-row holders; 2—on 2nd-row bench when folded down and 2—on 3rd-row bench when folded down
- DEFROSTER—rear window
- DOORS—dual sliding side doors with reflector markers
- ENTRY-ASSIST HANDLES—sliding doors and overhead grip for front passenger
- FLOOR MATS—carpeted front and rear
- FRONT WHEEL DRIVE
- GLASS—solar tinted
- GLOVE BOX—illuminated
- GRILLE—satin aluminum plated
- HEADLAMPS—halogen complex reflector with integral front turning lamps
- HOOD RELEASE—interior pull-handle
- INSTRUMENT PANEL—with black gauge cluster and side window defoggers
- INSTRUMENTATION—coolant temperature and fuel gauges, analog speedometer, tachometer, odometer and trip odometer
- LIFTGATE—rear fixed window with pull-down handle and gas-assist struts
- LIGHTS—interior front dome with time delay, 2nd-row dome lamp, sliding door step lamps with time delay, driver's side liftgate lamp and front door trim reflectors
- LOCKS—child-safety locks on rear doors and power central locking on all doors activated by driver's key cylinder; illuminated front door power switches and anti-lockout feature
- LOW EMISSIONS VEHICLE (LEV)
- LOWER ANCHORS AND TETHER ANCHORS FOR CHILDREN (LATCH)—both 2nd-row seat positions and outboard 3rd-row seat positions
- LUGGAGE RACK—side rails
- MIRRORS—folding, dual power exterior mirrors and interior day/night rearview
- MOLDINGS—color keyed bodyside protection
- POWER POINTS—auxiliary 12-volt outlets in front center instrument panel and between 2nd and 3rd rows
- RADIO—AM/FM stereo/cassette with 4 speakers

- REMOTE KEYLESS ENTRY SYSTEM—2 key fobs with panic alarm button
- SAFETY BELTS—front 3-point safety belts with height-adjustable D-rings and pretensioners, rear 3-point safety belts for all outboard passengers (3rd-row center lap belt only), outboard emergency locking retractors and automatic locking retractors (except driver's seat)
- SEATS—cloth front bucket seats with recline feature, 2nd-row bench seat with adjustable head restraints, 3rd-row In-Track™ rear sliding seat system with integrated armrests in rear trim panel, outboard adjustable head restraints and map pocket on front passenger seatback
- SPEED CONTROL—fingertip controls with tap-up/tap-down feature
- STEERING WHEEL—tilt steering column
- STORAGE—3rd-row driver's-side bin, map pockets and upper storage bin on front doors, front passenger under-seat drawer, instrument panel storage pull-out drawer with coin holder and center console with covered lid and jack tool storage bag located under 3rd-row seat
- TIRES—P215/70R15 black sidewall all-season with temporary mini-spare under cargo floor
- VISORS—cloth covered with illuminated vanity mirrors
- WARNING CHIME SYSTEM—safety belt reminder, headlamps-on when door is ajar
- WARNING LIGHT SYSTEM—brakes, battery, check engine, door ajar, safety belt reminder, airbags², low fuel indicator and low washer fluid
- WHEELS—15-inch steel wheels with full wheel covers
- WINDOWS—power front with illuminated switches, express-down driver's window with 15-minute accessory delay, manual flip-out 2nd-row and 3rd-row bodyside windows
- WINDSHIELD WIPERS—front interval windshield and rear window wiper/washer

Villager Popular—In addition to or in place of the Villager Value standard equipment, the Villager Popular is equipped with the following:

- AIR CONDITIONING—auxiliary with rear fan and audio controls and Odor and Particulate Air Filtration System
- BRAKES—4-wheel Anti-lock Brake System (ABS)
- CONSOLE—overhead with conversation mirror
- GLASS—rear Privacy Glass™
- LIFTGATE—2-way with flip-up window
- LIGHTS—dual front overhead map lamps, under-dash lamps with time delay, 2nd- and 3rd-row driver's side map lamps and front door step lamps
- PAINT—two-tone paint treatment
- SEATS—6-way power driver's seat with manual lumbar support
- WINDOWS—power 3rd-row bodyside window vents

Villager Sport—In addition to or in place of the Villager Popular standard equipment, the Villager Sport is equipped with the following:

- BRAKES—power-assisted front disc/rear drum
- FLOOR MAT—vinyl cargo mat
- FOG LAMPS—integrated into front bumper
- HOMELINK® UNIVERSAL TRANSCIVER—located on driver's visor
- INSTRUMENT PANEL—satin aluminum gauges with black trim surround panel
- LUGGAGE RACK—side rails with adjustable cross rails
- SEATS—2nd-row bucket seats with 4 cupholders on seatbacks when folded down
- STEERING WHEEL—leather-wrapped steering wheel with duplicate audio controls
- STORAGE—3-position parcel shelf with cargo net (30-pound capacity)
- TIRES—P225/60R16 black sidewall all-season
- WHEELS—16-inch machined aluminum wheels with silver-painted pockets

Villager Sport Plus—In addition to or in place of the Villager Sport standard equipment, the Villager Sport Plus is equipped with the following:

- BRAKES—4-wheel Anti-lock Brake System (ABS)
- RADIO—Entertainment Premium AM/FM stereo/cassette with 6 speakers, Personal Audio System and 6-disc CD changer (standard with AutoVision®)
- RADIO—Premium AM/FM stereo/cassette with 4 speakers, Personal Audio System and 6-disc CD changer (not available with AutoVision® Entertainment System)

Villager Estate—In addition to or in place of the Villager Sport Plus standard equipment, the Villager Estate is equipped with the following:

- HEADLAMPS—automatic on/delay off
- INSTRUMENT PANEL—black gauge cluster
- MIRRORS—heated exterior mirrors with memory feature
- MOLDINGS—color keyed bodyside protection with gold insert
- RADIO—Premium AM/FM stereo/cassette with 4 speakers and Personal Audio System
- SEATS—leather seating surfaces, memory driver's seat with 2 programmable positions, 4-way power front passenger seat and map pocket on driver's seatback
- WHEELS—16-inch machined aluminum wheels with gold-painted pockets

Villager Estate Premium—In addition to or in place of the Villager Estate standard equipment, the Villager Estate Premium is equipped with the following:

- AIR CONDITIONING—Electronic Automatic Temperature Control
- ELECTRONIC INSTRUMENT CLUSTER—digital speedometer, odometer, dual trip odometers, trip computer and outside temperature reading
- RADIO—Supersound System with AM/FM stereo/cassette/single CD player, 7 speakers, 6-disc CD changer and Personal Audio System

¹ Under normal driving conditions with regular fluid and filter changes.

² Always wear your safety belt and secure children in the rear seat.

³ Requires Electronic Automatic Temperature Control.



cougar



sable



grand marquis



villager



mountaineer



MERCURY

The Mercury Commitment® refers to the extra comforts of ownership, exemplified in a comprehensive benefits package. It is the assurance that meeting your driving needs will always be our ultimate objective. Ask your dealer for complete details and a copy of the limited warranty.

Mercury Test Drive 888.566.8888

Customer Assistance 800.392.3673

Roadside Assistance 800.241.3673

mercuryvehicles.com