

The All-New

# 05 FREESTYLE



**Built for life in Canada**

The newly invented  
**Ford Freestyle**



*Freestyle SEL shown in Norsesea Blue Clearcoat Metallic with Light Gunmetal.*

# Freestyle: An Adventure Vehicle Invented for Today's New Family

First there was the sedan and then the SUV, each with its own advantages. Ford bridged the drive and comfort of a car with the flexible room and all-weather capability of an SUV to create Freestyle. A new class of vehicle for a new generation.

We keep thinking about adventure, because we want you to drive a Ford.

Smart Thinking for All Your Needs...



2005 Ford Freestyle



## Interior Flexibility

05

- Seating for up to seven
- Roomy interior
- Cargo capacity
- Storage spaces

## Interior Comfort

07

- Command Seating™
- Whisper-quiet cabin
- Heated leather seats
- Dual-zone climate control

## Powertrain & Drivetrain Features

09

- 3.0L Duratec 30 DOHC V6 engine
- Continuously variable transmission (CVT)
  - Available all-wheel drive
  - All-speed traction control

## Ride & Handling Features

11

- Rear suspension sub-frame
- Large brake discs and low-dust brake pads
  - Four-wheel ABS with EBD
  - 17- and 18-inch tires and wheels

## Safety & Security Features

13

- SPACE Architecture™
- Personal Safety System™
- Safety Canopy™ System
- SecurILock® anti-theft system

## Specifications, Series Features & Options

15

# Freestyle: An Adventure Vehicle Family



## Seating for Six, Seven or Just One

With its standard fold-flat seating – including the front passenger seat – and a third-row bench seat that folds into the floor – Freestyle can be rearranged into dozens of different seating configurations to carry people, cargo and just about everything in-between. (Third-row split bench standard on Limited and optional on SEL.)

## Smart Thinking for All Your Needs

You wear a lot of hats in your life: commuter, cottager, consumer, maybe even coach. So you need a vehicle with the flexibility and reliability to be all the things your life needs it to be. That's the 2005 Freestyle – a new take on comfort, flexibility and amazingly smart features for people on the go.



Freestyle SEL shown in Red Fire Clearcoat Metallic with Light Gunmetal.



### More Room to Go Around

Roominess is a luxury that's standard on every 2005 Freestyle. In fact, it gives your second- and third-row passengers more leg room than any other vehicle in its class – something that goes a long way to make travel more comfortable for everyone.



### Big Enough for All Your Adventures

How big are everyday needs and adventures? Whether you're simply running errands, going to the beach for the day, or heading off on a motoring vacation, Freestyle has the room you need – including up to 1299L (45.9 cu. ft.)\* of cargo space for the really big stuff.



### Even the Nooks and Crannies are Clever

Freestyle is full of cleverly conceived spaces to store all the things you need on your travels. Like a hinged bin on the top of the instrument panel for pens, maps or your cell phone...a centre floor console large enough to hold CDs...and door panels with water-bottle holders and big storage pockets.

\* Cargo and load capacity limited by weight and distribution.

## Room with a View

Step inside Freestyle's roomy interior and discover what a commanding view really is. Seated up high, you can see above and beyond other traffic. And so do your passengers, with the raised theatre-style middle and rear seating. Around you, the interior is finished with genuine attention to detail and all kinds of comforts and conveniences, including an optional overhead DVD entertainment system.

### Say Goodbye to Noise

The secret to Freestyle's whisper-quiet cabin starts under the hood. That's where engineers redesigned the engine's air intake system, equipped it with the industry's first direct-drive water pump and installed hydraulic engine mounts to tune out more noise and vibration. You'll appreciate their efforts every time you turn the ignition key.



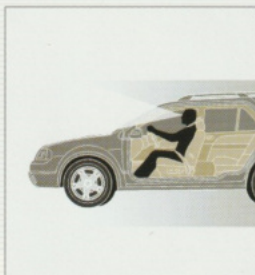
### Warm Up to This

Freestyle Limited features quality-crafted perforated leather seating surfaces and heated power front seats as standard equipment. What a great way to enjoy warmth and comfort on those sub-zero days, when you want it most. (Leather seating is also available as an option on SEL models.)



### Where Comfort and Command Meet

Freestyle's Command Seating™ places the front seats atop a cross-cabin reinforcement to provide you with a vantage point that's SUV-like in the view it provides. The higher seating position also makes it easier to get in and get out – you don't climb up or lower yourself down, you just step in.



Freestyle SE interior shown in Pebble Cloth.

### Cool x 2

Available dual-zone Electronic Automatic Temperature Control provides separate heating and cooling zones for the front and rear seating areas (manual controls in rear). For added comfort, the set-and-forget temperature control keeps the temperature "just right." (Standard on Freestyle Limited. Included in option packages on SE and SEL models.)





### Smooth, Responsive V6 Power

Freestyle's 3.0L Duratec 30 DOHC V6 features an aluminum engine block, aluminum cylinder heads and electronic throttle control. They combine to give it an excellent power-to-weight ratio – with 203 hp and 207 lb.-ft. of torque – and smooth, responsive acceleration that comes on without a fuss.

## Confident and All-Road Ready

The 2005 Freestyle features some of the most advanced and proven powertrain technology on the road today. It delivers a balanced blend of performance and fuel efficiency, reliability and all-weather confidence to make every trip as enjoyable as your first time behind the wheel.



Freestyle SEL shown in Silver Frost Clearcoat Metallic.



### Continuously Variable, Consistently Fast

Freestyle features a new continuously variable transmission (CVT) that allows the engine to deliver optimal horsepower, torque and fuel efficiency through the full range of driving speeds and demands. In fact, it performs so effectively that Freestyle's 0-100 km acceleration time compares favourably to rivals with much bigger – and more fuel-thirsty – engines.



### All-Wheel-Drive Confidence and Reliability

All Freestyle models are available with an optional Haldex electronic all-wheel-drive system for proven year-round, all-road driving confidence. It automatically senses wheel slippage and redirects torque to the wheels with the best grip in as little as 50 milliseconds – before you even notice any loss of traction.



### All-Speed Traction Control

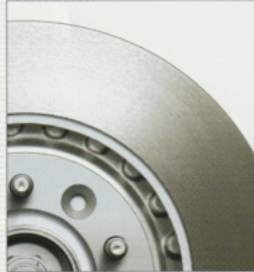
All-speed traction control is standard on Freestyle. On front-wheel-drive models, it automatically detects drive-wheel slippage and applies a combination of brake and/or engine control interventions to help the wheel regain traction. When combined with the optional all-wheel-drive system, all-speed traction control also allows Freestyle to continue on its way even if just one wheel has traction.

# Stiffness is the Key to Comfort and Control

Remarkable ride quality and excellent control begin with Freestyle's stiff frame structure. By resisting movement caused by road impacts and cornering forces, it allows the suspension system to do its job, unfettered. You'll notice it in the confident way Freestyle takes on rough roads and tight turns – even with a full load of passengers or cargo.

## More Stop, Less Dust

Large front and rear brake discs – and dual-piston front brake callipers – help Freestyle perform confidently and consistently in demanding braking situations. A new brake pad formulation also contributes to brake performance, while reducing brake dust build-up on the wheels.



## Optimized Braking Power

Freestyle features a standard four-wheel disc brake system with ABS and electronic brakeforce distribution (EBD) – advanced technology that automatically optimizes front and rear brake pressure to help reduce stopping distances.



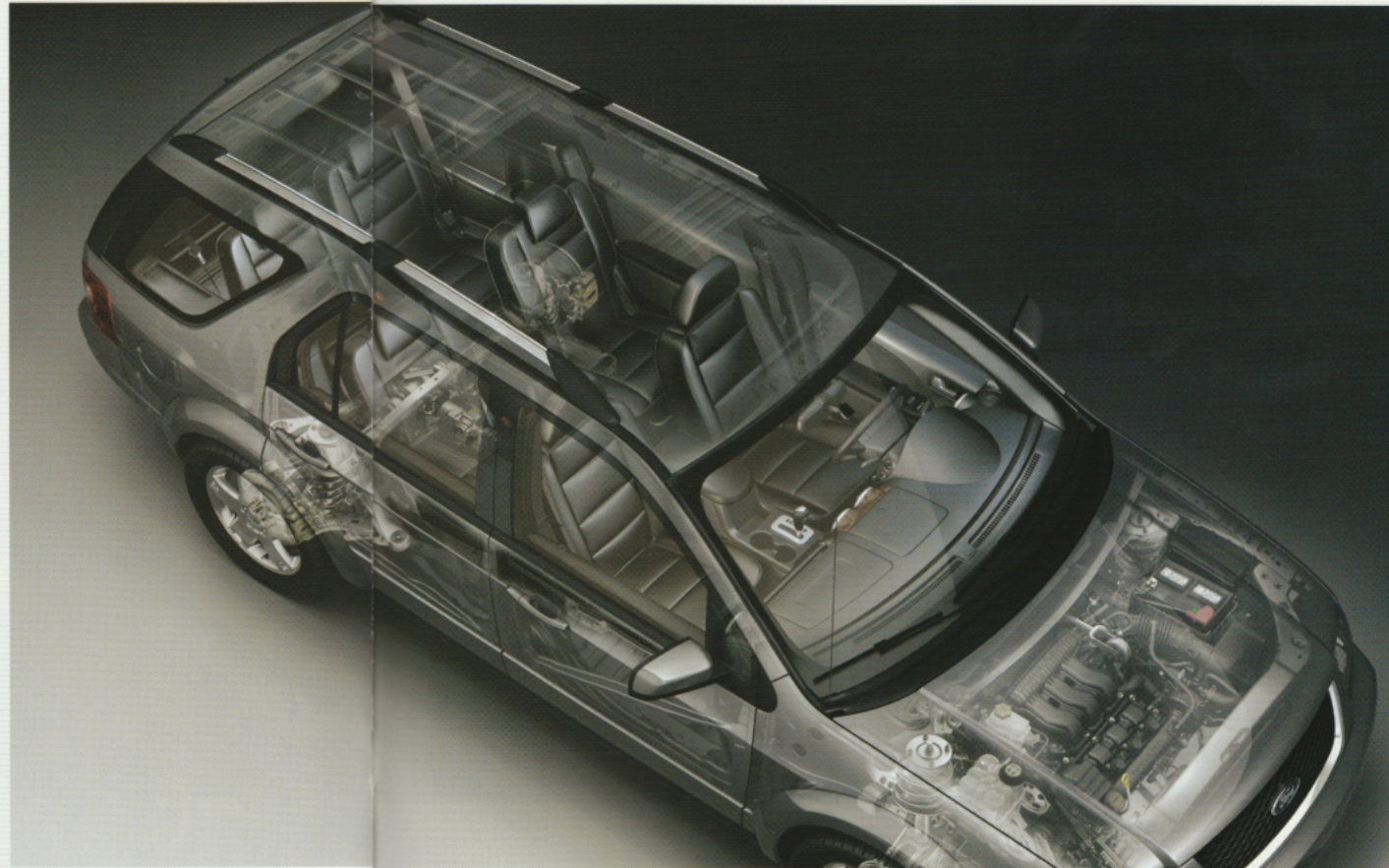
## The Benefits of a Big Footprint

Freestyle SE and SEL ride on standard 17-inch all-season tires designed to deliver a quiet ride and good adhesion in a wide range of driving conditions. Freestyle Limited takes these qualities a notch higher with standard 18-inch tires on bright aluminum wheels.



## A Frame Under the Frame

To isolate road shocks and road noise – and firmly position the wheels where they can track with the greatest accuracy – Freestyle features a rear suspension sub-frame with specially tuned bushings. It's the kind of quality engineering that makes a real difference in the way Freestyle rides and handles.



*Freestyle Limited all-wheel drive model shown.*

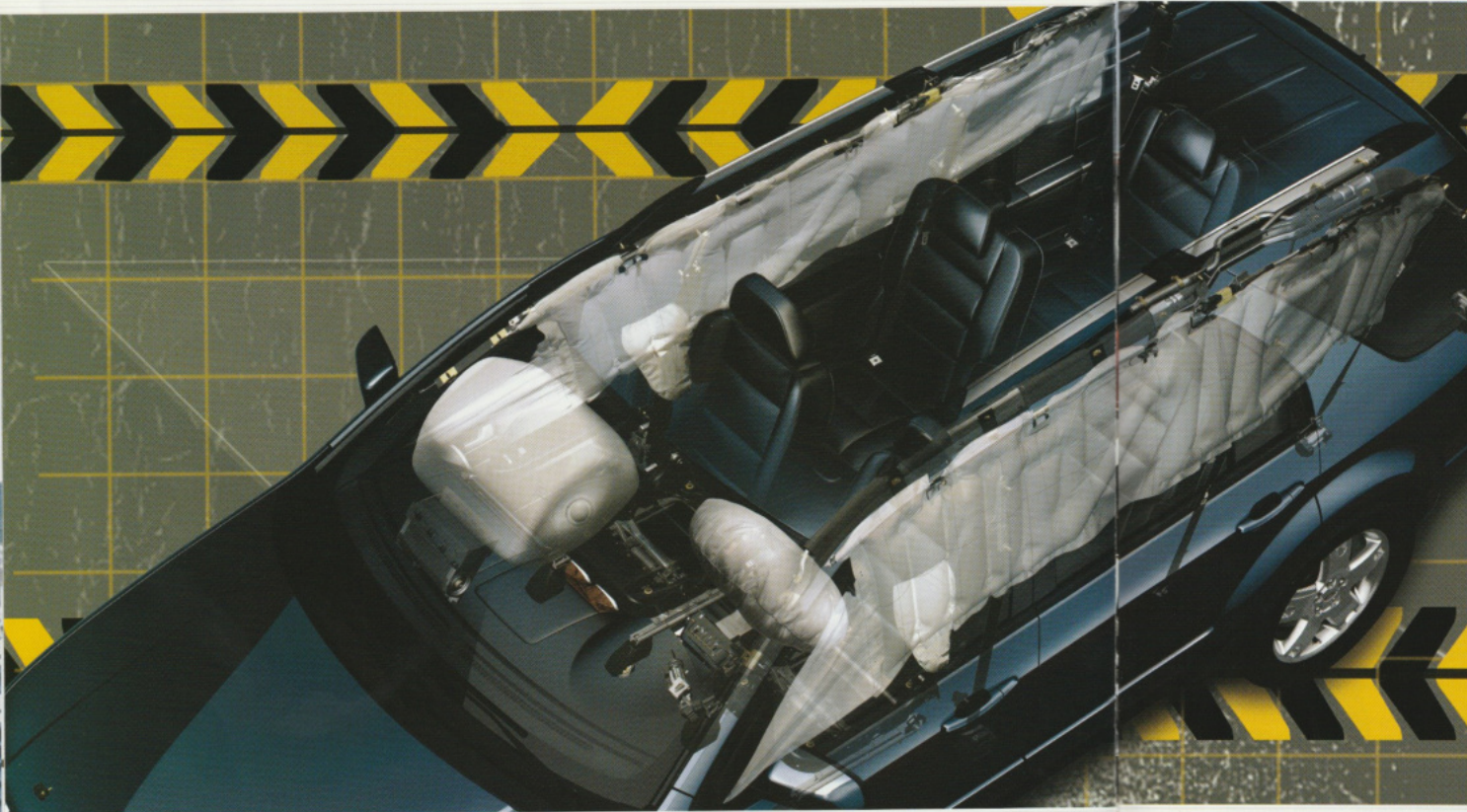


### Billions of Security Codes

Freestyle's standard SecuriLock® anti-theft system encodes your ignition key with one of billions of security codes every time you turn off the ignition. Without the right key and the right code, the engine will not start and would-be thieves are thwarted.

## Because Safety Always Matters

The 2005 Freestyle was designed and engineered to help protect you from some of the uncertainties of driving. From its crash energy-channelling frame structure to its advanced air bag systems and available perimeter security lighting, it stands at the forefront of safety.



### SPACE Architecture™ – A New Frontier in Safety

Ford's new Side Protection And Cabin Enhancement (SPACE Architecture™) helps channel frontal, rear and side-impact collision forces away from the passenger compartment – and you – in the crucial first milliseconds of a crash.

### Tailor-Made Protection

The Personal Safety System™ is standard on every 2005 Freestyle. This system utilizes a network of smart sensors, customizing the deployment level of the dual-stage air bags based on: whether a front passenger is present and his/her weight range; the position of the driver's seat; whether the front safety belts are in use; and the overall severity of the crash. The system will also turn off the passenger air bag if there's something (or someone) small on the passenger seat or if the seat is unoccupied.\*

### A Curtain of Safety

Freestyle's optional new Safety Canopy™ System features side-curtain air bags that deploy from the headliner above the side doors and windows in certain side-impact events. It includes rollover protection that keeps the side-curtain air bags inflated for an extended period to enhance head and shoulder protection for outboard occupants in all three rows.

\* Always wear your safety belt and secure children in the rear seat.



# Specifications

DIMENSIONS (mm (in.))	
Wheelbase	2867 (112.9)
Length	5075 (199.8)
Height	1649 (64.9)
Width	1905 (75.0)
Read	
– Front	1640 (64.6)
– Rear	1651 (65.0)
Ground clearance	160 (6.3)
Head room	
– Front	1001 (39.4)
– 2nd row	1001 (39.4)
– 3rd row	978 (38.5)
Shoulder room	
– Front	1485 (58.5)
– 2nd row	1472 (57.9)
– 3rd row	1286 (50.6)
Hip room	
– Front	1409 (55.5)
– 2nd row	1418 (55.8)
– 3rd row	1167 (45.9)
Leg room	
– Front	1046 (41.2)
– 2nd row	1022 (40.2)
– 3rd row	846 (33.3)

## WEIGHTS/CAPACITIES

Cargo capacity (lbs (kg.))	
– Behind 3rd-row seats	498 (17.6)
– Behind 2nd-row seats	1299 (45.9)
Fuel tank (litres (U.S. gal.))	
Seating	6 / 7
Base model curb weight (kg (lb.))	
– Front-wheel drive (FWD)	1796 (3959)
– All-wheel drive (AWD)	1865 (4112)
Towing capacity (kg (lb.))	907 (2000)*

\*Maximum trailer towing capacity will vary based on passenger and cargo loads, and optional equipment installed on the vehicle. See your Ford Dealer for more information.

## POWERTRAINS

	Duratec 30 V6
Displacement (litres)	3.0
Valvetrain	24-valve DOHC
Horsepower SAE net	203 @ 5750 rpm
Torque SAE net lb.-ft.	207 @ 4500 rpm
Fuel injection system	Sequential multi-port electronic
Transmission	Continuously variable, chain driven
Final drive ratio	
– Front-wheel drive (FWD)	5.19:1
– All-wheel drive (AWD)	5.54:1

## SERIES FEATURES

SE	
SEL	
LIMITED	
<b>POWERTRAIN</b>	
● ● ●	3.0L Duratec 30 DOHC V6 engine
● ● ●	Continuously variable transmission (CVT)
● ● ●	Front-wheel drive
○ ○ ○	All-wheel drive
<b>CHASSIS</b>	
● ● ●	– All-speed traction control
<b>Brakes</b>	
● ● ●	– Power 4-wheel anti-lock disc brake system with electronic brakeforce distribution (EBD)
<b>Steering</b>	
● ● ●	– Power rack-and-pinion
<b>Suspension</b>	
● ● ●	– Front – Independent MacPherson strut with stabilizer bar
● ● ●	– Rear – Independent multi-link with stabilizer bar
<b>Tires</b>	
● ● ●	– P215/65R17 BSW all-season
– ● ●	– P225/60R18 BSW all-season
● ● ●	– Mini spare
<b>Wheels</b>	
● ● ●	– 17" 7-spoke painted aluminum
– ● ●	– 17" 5-spoke bright aluminum
– ● ●	– 18" 5-spoke bright aluminum
<b>EXTERIOR</b>	
l   ●	Alarm system – Perimeter
Cladding	
● ● ●	– Two-tone
– ● ●	– Monochromatic (body colour)
● ● ●	Glass – Solar-tinted
Lighting	
l   ●	– Automatic headlamps
– ● ●	– Fog lamps
Mirrors	
● ● ●	– Dual, power, black
– ● ●	– Dual power with heated glass, body colour with perimeter lighting
– ● ●	– Dual power with heated glass, body colour with perimeter lighting and memory
● ● ●	Remote keyless entry system with driver-door entry keypad
– ○ ●	Reverse Sensing System
● ● ●	Roof rails (no cross bars)
● ● ●	Windshield wipers – Fixed interval
<b>INTERIOR</b>	
Air bags	
● ● ●	– Personal Safety System™ with dual-stage driver and front passenger air bags, Occupant Classification Technology
l   ●	– Front side-impact
l   ●	– 3-row Safety Canopy™ System with rollover protection
Audio/video systems	
● ● ●	– AM/FM stereo with single-disc CD player
– ● ●	– AM/FM stereo with in-dash 6-disc CD changer/MP3 player
– ● ●	– Audiophile AM/FM stereo with in-dash 6-disc CD changer/MP3 player and subwoofer
– ● ●	– Steering wheel-mounted audio controls
– ○ ○	– DVD Family Entertainment Centre with 2 wireless headphones
Climate control	
● ● ●	– Manual
l   ●	– Dual-zone with electronic automatic temperature control in front
l   ●	– Auxiliary with rear controls
Consoles	
● ● ●	– Front floor, with armrest, storage and cupholders
○ ○ ○	– 2nd row floor (only with 3rd row 40/40 bucket), with storage and cupholders
● ● ●	– Overhead, with dome light, maplight, conversation mirror and sunglasses holder

SE	
SEL	
LIMITED	
<b>INTERIOR (cont'd)</b>	
Door locks	
● ● ●	– Power
● ● ●	– Childproof (rear)
● ● ●	– Floor mats – Carpeted, front and 2nd row
– ● ●	– HomeLink® universal garage door opener
Instrument panel	
● ● ●	– Analog gauges with tachometer and covered, panel-top storage bin
● ● ●	– LATCH (Lower Anchors and Tethers for Children) child-seat anchor points
– ● ●	– Memory function – Saves and recalls driver seat, side mirror and pedal positions for 2 drivers
– ● ●	– Message centre with compass and trip computer
Mirror – Rearview	
● ● ●	– Day/night
– ● ●	– Electrochromic auto-dimming
– ○ ●	– Moonroof – Power
l   ●	– Outside temperature display
– ● ●	– Pedals – Power adjustable
Safety Belts	
● ● ●	– Front – 3-point height-adjustable with pretensioners and energy management retractors
● ● ●	– 2nd and 3rd rows – 3-point belts for all seating positions
● ● ●	– Speed control
● ● ●	– Securilock® anti-theft system
Steering wheel	
● ● ●	– Urethane-covered with tilt function
– ● ●	– Leather-wrapped with tilt function
Visors	
● ● ●	– With covered and illuminated driver and front passenger vanity mirrors
Windows	
● ● ●	– Power side with express-down driver window and accessory delay
<b>SEATING</b>	
Front	
● ● ●	– Cloth bucket seats with fold-flat passenger seatback
– ○ ●	– Perforated-leather bucket seats with fold-flat passenger seatback (Requires Front Row Comfort Group and 50/50 split 3rd row seat on SEL)
● ● ●	– 6-way power driver seat with manual lumbar support adjuster
– l   ●	– 8-way power driver seat with manual lumbar support adjuster
– l   ●	– 4-way power front passenger seat with manual lumbar support adjuster
– ● ●	– Heated front seats

SE	
SEL	
LIMITED	
<b>SEATING (cont'd)</b>	
2nd Row	
● ● ●	– Cloth bucket seats with reclining seatback
○ ○ ○	– Cloth 3-passenger 60/40-split bench seat
– ○ ○	– Perforated-leather 60/40-split bench with reclining seatbacks (Requires Front Row Comfort Group on SEL)
– ● ●	– Perforated-leather bucket seats with reclining seatback
3rd Row	
● ● ●	– Cloth 2-passenger fold-flat-into-floor bench seat
– ○ ●	– Cloth 2-passenger 50/50-split fold-flat-into-floor bench seat
– ○ ●	– Perforated-leather-look vinyl 2-passenger 50/50-split fold-flat-into-floor bench seat (Requires Front Row Comfort Group on SEL)
<b>EQUIPMENT GROUPS AND PACKAGES</b>	
○ ○ ○	– Convenience Group
– Automatic headlamps	
– Auxiliary climate controls	
– Dual-zone automatic temperature control	
– Outside temperature display	
– ○ ○	– Front Row Comfort Group
– 8-way power driver seat with manual lumbar support adjuster	
– 4-way power front passenger seat with manual lumbar support adjuster	
– Auxiliary Climate Control	
– Dual-zone electronic automatic temperature control	
– Outside temperature display	
– ○ ●	– Safety Package
– 3-row Safety Canopy™ System with rollover protection	
– Front side-impact air bags	
– Perimeter alarm system	
○ ○ ○	– Safety and Security Package
– 3-row Safety Canopy™ System with rollover protection	
– Front side-impact air bags	
– Perimeter alarm system	
– Dual heated power side mirrors with remote perimeter lighting	

● = Standard ○ = Optional – = Not Available l = Included in an Equipment Group or Package

## GENUINE FORD ACCESSORIES



Remote Start/Security



Mobile Ease



Cargo Organizer

Your Ford of Canada Dealer carries a complete line of Genuine Ford Accessories designed especially for your new Freestyle. Ford Accessories purchased along with your new vehicle and installed by the Dealer are covered for the full length of your **New Vehicle's Warranty**.

# Features

## INTERIOR COLOURS

- Black
- Pebble (Tan)
- Shale (Grey)
- EXTERIOR COLOURS**
- Freestyle SE**
- Black Clearcoat
  - With Charcoal Beige cladding
  - With Light Gunmetal cladding
- Dark Blue Pearl Clearcoat Metallic
  - With Charcoal Beige cladding
  - With Light Gunmetal cladding
- Oxford White Clearcoat
  - With Arizona Beige cladding
  - With Graphite cladding
- Pueblo Gold Clearcoat Metallic
  - With Arizona Beige cladding
- Red Fire Clearcoat Metallic
  - With Charcoal Beige cladding
  - With Light Gunmetal cladding
- Silver Frost Clearcoat Metallic
  - With Light Gunmetal cladding
- Titanium Green Clearcoat Metallic
  - With Arizona Beige cladding
  - With Graphite cladding
- Freestyle SEL**
- Black Clearcoat
  - With Charcoal Beige cladding
  - With Light Gunmetal cladding
- Dark Blue Pearl Clearcoat Metallic
  - With Charcoal Beige cladding
  - With Light Gunmetal cladding
- Dark Shadow Grey Clearcoat Metallic
  - With Arizona Beige cladding
  - With Graphite cladding
- Norsea Blue Clearcoat Metallic
  - With Charcoal Beige cladding
  - With Light Gunmetal cladding
- Oxford White Clearcoat
  - With Arizona Beige cladding
  - With Graphite cladding
- Pueblo Gold Clearcoat Metallic
  - With Arizona Beige cladding
- Red Fire Clearcoat Metallic
  - With Charcoal Beige cladding
  - With Light Gunmetal cladding
- Silver Frost Clearcoat Metallic
  - With Light Gunmetal cladding
- Titanium Green Clearcoat Metallic
  - With Arizona Beige cladding
  - With Graphite cladding
- Freestyle Limited** All with monochromatic cladding
- Black Clearcoat
- Dark Blue Pearl Clearcoat Metallic
- Dark Shadow Grey Clearcoat Metallic
- Merlot Clearcoat Metallic
- Pueblo Gold Clearcoat Metallic
- Titanium Green Clearcoat Metallic



## WHEELS



17" painted aluminum (SE)

17" bright aluminum (SEL)

18" bright aluminum (Limited)

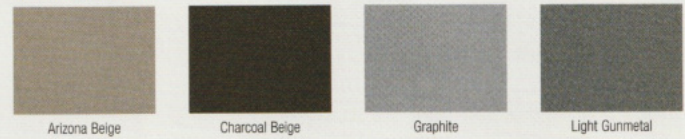
## EXTERIOR COLOURS

- CLADDING COLOURS (LOWER BODY)**
- Arizona Beige
- Charcoal Beige
- Graphite
- Light Gunmetal
- Monochromatic (Body Colour)
- UPPER BODY COLOURS**
- Freestyle SE & SEL**
- Black Clearcoat
- Dark Blue Pearl Clearcoat Metallic
- Oxford White Clearcoat
- Pueblo Gold Clearcoat Metallic
- Red Fire Clearcoat Metallic
- Silver Frost Clearcoat Metallic
- Titanium Green Clearcoat Metallic
- Freestyle SEL**
- Dark Shadow Grey Clearcoat Metallic
- Norsea Blue Clearcoat Metallic
- Freestyle Limited**
- Black Clearcoat
- Dark Blue Pearl Clearcoat Metallic
- Dark Shadow Grey Clearcoat Metallic
- Merlot Clearcoat Metallic
- Pueblo Gold Clearcoat Metallic
- Titanium Green Clearcoat Metallic

### UPPER BODY COLOURS



### LOWER BODY COLOURS



## OUR COMMITMENT TO YOU

### PEACE-OF-MIND PROTECTION FOR YOUR NEW 2005 FORD VEHICLE

**New-Vehicle Limited Warranty**  
3 years / 60,000 km

**Powertrain Warranty**  
5 years / 100,000 km

**Corrosion Warranty**  
5 years / Unlimited distance

**Roadside Assistance at No Additional Charge**  
3 years / 60,000 km

*Certain conditions apply. Go to ford.ca or ask your local Ford of Canada Dealer for more information on these warranties and coverages.*

[ford.ca](http://ford.ca) For more information about Ford of Canada and Ford products, visit our website.

### PROMPT, COURTEOUS ANSWERS TO YOUR QUESTIONS

Please call our Customer Relationship Centre for any additional information you require on Ford vehicles, warranties, programs or other matters.  
**Ford Customer Relationship Centre: 1-800-565-FORD (3673)**

**CREDIT OPTIONS TO SUIT YOUR NEEDS**  
Ford Credit is a full-service automobile finance company offering a wide variety of financing and leasing programs to every qualified buyer.  
**Ford Credit Customer Service Centre: 1-877-636-7346**

### OUR COMMITMENT TO THE COMMUNITY

Ford of Canada and its Dealers are proud to support the following community initiatives across Canada.



Competitive comparisons are based on publicly available information and Ford data at the time of printing. Some features discussed may be optional. Vehicles shown may contain optional equipment. Features shown may be offered only in combination with other options or subject to additional ordering requirements or limitations. Following publication of this catalogue, certain changes in standard equipment, options and the like, or product delays, may have occurred which would not be included in these pages. Your Ford of Canada Dealer is your best source for up-to-date information. Ford Motor Company of Canada, Limited, reserves the right to change product specifications at any time without incurring obligations. This catalogue is printed using vegetable inks on recycled paper containing 10% de-linked post-consumer materials. Colours may not be exactly as illustrated due to restrictions of the printing process. Please see your sales consultant for specific colour and model availability.



2005 Focus



2005 Thunderbird



2005 Mustang



2005 Taurus



2005 Five Hundred



2005 Grand Marquis



2005 Freestar



2005 Freestyle



2005 Escape



2005 Explorer Sport Trac



2005 Explorer 4-Door



2005 Expedition



2005 Excursion



2005 Ranger



2005 F-150



2005 F-Series Super Duty



2005 E-Series

THE MOMENTUM OF OUR PAST  
PROPELS US INTO THE FUTURE



**Built for life in Canada**



Revised Nov '04