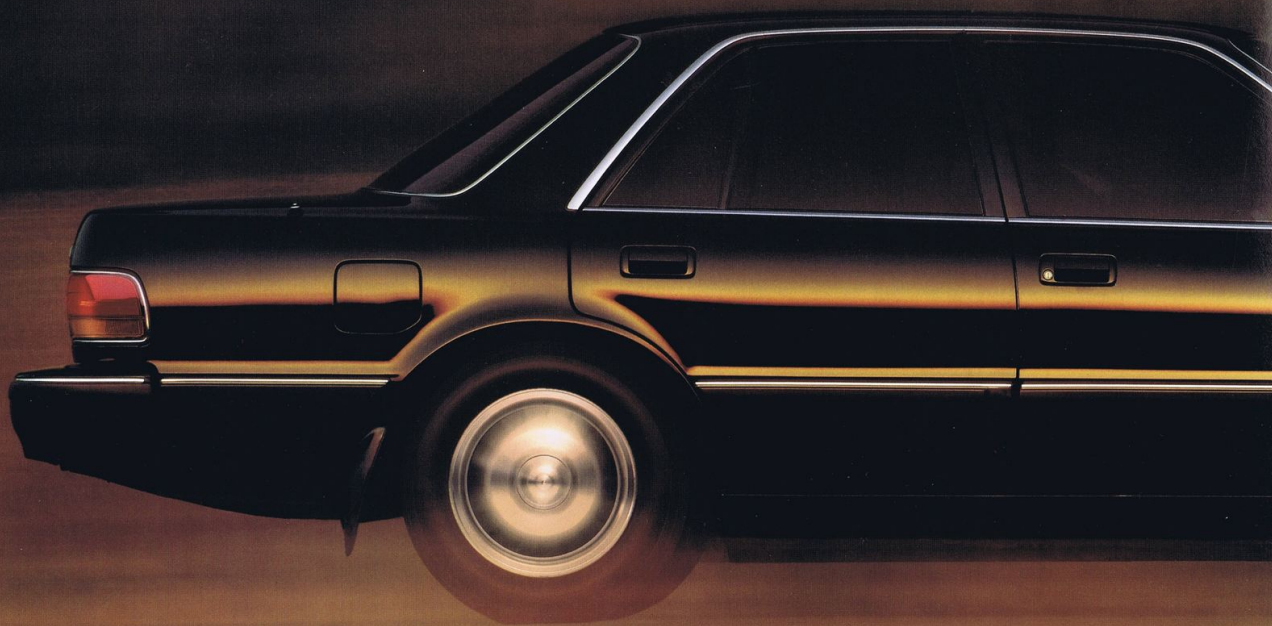


1992 CRESSIDA



 TOYOTA



1992 CRESSIDA



**C**ressida is the ultimate expression of Toyota luxury. Its classic form is both formal and aerodynamic. Beneath the hood, a time-proven powerplant is quiet and powerful. The suspension system transforms every ride into a hushed glide. The interior is tasteful, elegant and features outstanding comfort. And perhaps most important, Cressida exemplifies legendary Toyota quality and dependability. Cressida was ranked\* in the J.D. Power and Associates Top 10 Models in Initial Quality.™ Cressida...when you're ready for Toyota's finest.

\*J. D. Power and Associates 1991 Initial Quality Study,™ Based on 33,137 consumer responses indicating owner-reported problems during the first 90 days of ownership.



**OUTSTANDING SATISFACTION.**  
*Toyota's most lavish expression  
of automotive excellence.*

## CRESSIDA OPTIONS



**A VERY COMFORTING THOUGHT TO ADD.** The optional Power Seat Package includes the 7-way adjustable driver's and passenger's seats with power slide, recline and seat cushion front/rear height adjustments.



**COME ALIVE WITH THE SOUND OF MUSIC.** With the optional Premium 3-in-1 ETR/Cassette/CD, your music will be tuned to your liking with Acoustic Flavor and 6-speaker sound.

**SUMPTUOUS SEATING AWAITS.** For the ultimate in comfort, choose Cressida's optional Power Seat Package, which gives both the driver and front seat passenger 7-way adjustable, deeply cushioned seats. Cressida's interior can be brought to the pinnacle of luxury with the addition of the Leather Seat Trim Package, which includes supple leather trim for the seats, leather-wrapped shift knob and parking brake handle, and the Power Seat Package.

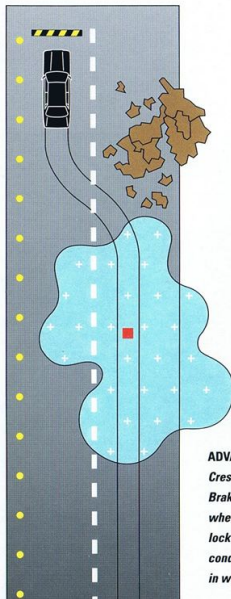
**THOUGHTFUL EXTRA TOUCHES YOU CAN ADD.** The Premium 3-in-1 ETR/Cassette/CD with Acoustic Flavor can be added for clear and glorious sound. Its 6-speaker system surrounds you in stunning, crystalline music that makes you think you're



**LET THE SUNSHINE IN.** To commune closer with nature, Cressida's optional moonroof slides, tilts and has a sliding sunshade. A tone sounds if you try to lock the car when the roof is tilted open.

seated in a concert hall. And to bring a little of the outside in, there's an optional power glass moonroof. It has a sliding sunshade and tilts as well as slides open. Add Cressida's optional Anti-lock Brake System (ABS) that helps bring you to a more controlled stop should you be faced with a sudden emergency maneuver. All in all, Cressida is designed to meet your every expectation.

Toyota vehicles are built with popular option combinations. Not all options are available separately. Your Toyota dealer can help find the Cressida that is right for you.



**ADVANCED ABS BRAKING.** Cressida's optional Anti-lock Brake System (ABS) monitors wheel speed and helps prevent lockup under severe braking conditions as well as in wet weather.



*Shown with optional Sable Leather Seat Trim Package.*



Shown with optional Sable Leather Seat Trim Package.



**SURE, STEADY STOPPING POWER.** *Cressida's power-assisted 4-wheel ventilated disc brakes help bring Cressida to sure, smooth stops.*



**THE DRIVER-FRIENDLY STEERING WHEEL.** *The standard tilt-and-telescopic steering wheel adjusts to fit your favorite driving position.*

## CRESSIDA FEATURES

### EVERY IMAGINABLE AMENITY GREET'S YOU WHEN YOU ENTER CRESSIDA'S LUSH INTERIOR.

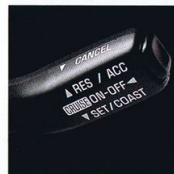
In the plush driver's seat, you face an intelligent instrumentation cluster featuring a full complement of easy-to-read analog gauges. All essential controls are grouped together for ease of use. Standard air conditioning is operated by "soft-touch" buttons. You'll appreciate the quality "feel" of power window and door lock switches. Cressida's speed-sensing progressive power steering provides a stiffer feel when driving at highway speeds and an easier touch for low-speed maneuvering. Cressida's sound insulation enhances the enjoyment of the Premium Electronically-Tuned Radio (ETR)/Cassette with Acoustic Flavor and 6 speakers. The Cressida's drive will seem effortless, thanks to the 3.0-liter 6-cylinder twin-cam 190-hp engine joined to a 4-speed electronically controlled automatic overdrive transmission (ECT).

**UNDER THE HOOD, A STRONG, SMOOTH ENGINE.** *Cressida's advanced 6-cylinder engine employs an electronic microprocessor to control both engine and transmission for smooth operation.*

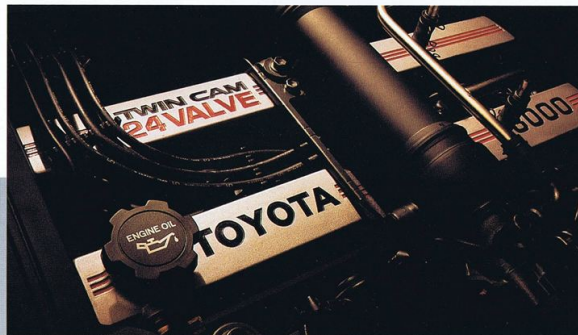
**SECURITY FEATURES ARE STANDARD.** *Cressida features the Toyota Theft Deterrent System that warns you of attempted tampering.*



**LEAVE THE CRUISING TO CRESSIDA.** *With cruise control, your driving is more relaxed. It's operated at the touch of the steering wheel stalk.*



**POWER AT YOUR FINGERTIPS.** *Power features include night-time illuminated window switches and door locks that unlock the driver's door only or all doors at once.*



**EARLY-MORNING MIST OR SLIGHT DRIZZLE** is handled efficiently with the stalk-mounted variable intermittent windshield wipers.



## CRESSIDA OPTIONS



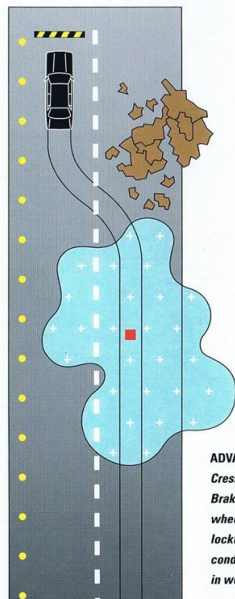
**A VERY COMFORTING THOUGHT TO ADD.** *The optional Power Seat Package includes the 7-way adjustable driver's and passenger's seats with power slide, recline and seat cushion front/rear height adjustments.*



**COME ALIVE WITH THE SOUND OF MUSIC.** *With the optional Premium 3-in-1 ETR/Cassette/CD, your music will be tuned to your liking with Acoustic Flavor and 6-speaker sound.*

**SUMPTUOUS SEATING AWAITS.** For the ultimate in comfort, choose Cressida's optional Power Seat Package, which gives both the driver and front seat passenger 7-way adjustable, deeply cushioned seats. Cressida's interior can be brought to the pinnacle of luxury with the addition of the Leather Seat Trim Package, which includes supple leather trim for the seats, leather-wrapped shift knob and parking brake handle, and the Power Seat Package.

**THOUGHTFUL EXTRA TOUCHES YOU CAN ADD.** The Premium 3-in-1 ETR/Cassette/CD with Acoustic Flavor can be added for clear and glorious sound. Its 6-speaker system surrounds you in stunning, crystalline music that makes you think you're



**ADVANCED ABS BRAKING.** *Cressida's optional Anti-lock Brake System (ABS) monitors wheel speed and helps prevent lockup under severe braking conditions as well as in wet weather.*



**LET THE SUNSHINE IN.** *To commune closer with nature, Cressida's optional moonroof slides, tilts and has a sliding sunshade. A tone sounds if you try to lock the car when the roof is tilted open.*

seated in a concert hall. And to bring a little of the outside in, there's an optional power glass moonroof. It has a sliding sunshade and tilts as well as slides open. Add Cressida's optional Anti-lock Brake System (ABS) that helps bring you to a more controlled stop should you be faced with a sudden emergency maneuver. All in all, Cressida is designed to meet your every expectation.

Toyota vehicles are built with popular option combinations. Not all options are available separately. Your Toyota dealer can help find the Cressida that is right for you.





## SAFETY

**F**or over fifty years Toyota has built vehicles which have achieved the highest recognition for quality, dependability and engineering excellence. These accomplishments are a result of Toyota's commitment to build vehicles that respond to your needs. It is a commitment based on the belief that well built and dependable vehicles are safer vehicles. And it is a commitment which requires that everything that goes into a new Toyota—design, materials, manufacture, workmanship—does so with your safety, comfort and driving enjoyment in mind. Because, ultimately, the most important thing that goes into any new Toyota is you.

### 1992 CRESSIDA SAFETY FEATURES:

- Motorized 2-point front passive-restraint shoulder belts with manual lap belts
- 3-point rear seatbelts in outboard positions
- Child-protector rear door locks
- Side door intrusion beams
- Passenger-side power window lockout
- 4-wheel ventilated disc brakes
- Optional Anti-lock Brake System (ABS)

Get More From Life...Buckle Up!

MECHANICAL	4-Dr. Sedan
30-liter 6-cylinder twin-cam 24-valve EFI engine	S
4-speed electronically controlled automatic overdrive transmission (ECT)	S
Speed-sensing progressive power rack-and-pinion steering	S
Independent MacPherson strut front suspension	S
Double-wishbone rear suspension	S
Power-assisted 4-wheel ventilated disc brakes	S
Anti-lock Brake System (ABS)	O
195/65R15 All-Season steel-belted radial tires	S

EXTERIOR	
Aerodynamic halogen headlamps	S
Color-keyed bumpers, door handles and mudguards	S
Dual color-keyed power outside mirrors with defoggers	S
Color-coordinated wraparound protective bodyside moldings	S
Tinted glass	S <sup>1</sup>
Power tilt/slide glass moonroof with sliding sunshade	O
Aluminum alloy wheels	S

INTERIOR	
7-way adjustable driver's seat	S
4-way adjustable passenger's seat	S
Contoured rear seat with center armrest and adjustable headrests	S
Full fabric seats and door trim with dual door map pockets	S
Full cut-pile carpeting	S
Motorized 2-point front passive-restraint shoulder belts with manual lap belts	S
3-point rear seatbelts in outboard positions	S
Child-protector rear door locks	S
Tilt-and-telescopic leather-wrapped steering wheel	S
Variable intermittent windshield wipers	S
Cruise control	S
Power windows and door locks with "anti-lockout" feature	S
Automatic illuminated entry/exit fade-out system	S
Auto-off headlamps	S
Dual cup holder	S
Digital quartz clock	S
Rear window defogger and side window demisters	S
Air conditioning with automatic soft-touch climate controls	S
Dual illuminated vanity mirrors	S
Remote hood, trunk and fuel-filler door releases	S
Speedometer, tachometer, odometer, tripmeter, coolant temperature and fuel level gauges	S
Seatbelt, low fuel level, door ajar, brake, coolant temperature, battery, engine and rear taillamp warning lights	S
Carpeted floor mats	O <sup>2</sup>
Integrated Toyota Theft Deterrent System with security light	S

AUDIO SYSTEMS	
Premium ETR/Cassette with Acoustic Flavor, 6 speakers, power antenna and diversity reception	S
Premium 3-in-1 ETR/Cassette/CD with Acoustic Flavor, 6 speakers, power antenna and diversity reception	O

PACKAGES	
Power Seat Package—includes 7-way adjustable power driver's and passenger's seats	O
Leather Seat Trim Package—includes Power Seat Package, leather seat and door trim, leather shift knob and parking brake handle	O

MECHANICAL PERFORMANCE	4-Dr. Sedan
Body/frame construction	Unitized body
Steering type	Speed-sensing progressive power rack-and-pinion
Turning circle diameter, curb to curb	(ft.) 32.8
Brakes, power-assisted	(front) Ventilated discs (rear) Ventilated discs
Suspension	(front) MacPherson struts with offset coil springs, low-pressure gas-filled shock absorbers and ball-joint stabilizer bar (rear) Unequal length double-wishbone independent with offset coil springs, low-pressure gas-filled shock absorbers and ball-joint stabilizer bar
Engine type	6-cylinder in-line twin-cam 24-valve with EFI
Displacement	3.0 liters (2,954cc)
Horsepower (SAE net)	190 @ 5,600 rpm
Torque (SAE net)	185 lb.-ft. @ 4,400 rpm

ELECTRICAL	
Alternator	12 volts, 80 amps.
Ignition system	Electronic
Battery	Maintenance-free, 70-amps./hr.

EXTERIOR DIMENSIONS (in.)	
Wheelbase	105.5
Overall length	189.6
Overall width	67.3
Overall height	54.5
Tread width	(front) 57.3 (rear) 57.3

INTERIOR DIMENSIONS (in.)	
Head room	(front) 38.4 (rear) 37.1
Leg room	(front) 42.8 (rear) 35.0
Shoulder room	(front) 54.6 (rear) 54.4
Hip room	(front) 52.9 (rear) 39.1

CURB WEIGHT (lbs.)	
4-speed automatic overdrive (ECT)	3,439

CAPACITIES	
Luggage capacity	(cu. ft.) 12.5
Fuel tank	(gals.) 18.5

TIRES	
Type	Steel-belted All-Season radial blackwalls
Size	195/65R15
Spare	Full-size

MILEAGE ESTIMATES <sup>3</sup>	
EPA estimated MPG city/highway (4-speed automatic overdrive [ECT])	19/24

## DATA/SPECS/COLORS

Interior Trim Levels	Exterior Finish	Interior	
Fabric	Blue, Gray or Sable	Silvermist Metallic	Gray
Leather Seat Trim Package <sup>4</sup>	Blue, Gray or Sable	Dark Gray Metallic	Gray
		Super White	Blue or Gray
		White Pearl	Blue or Gray
		Almond Beige Pearl	Sable
		Dark Amethyst Pearl	Gray
		Ice Blue Pearl	Blue
		Dark Blue Pearl	Blue
		Medium Red Pearl	Gray
		Satin Black Metallic	Gray

S—Standard  
O—Optional

<sup>1</sup>Bronze glass with Sable interior.  
<sup>2</sup>Also available as a dealer-installed accessory.

<sup>3</sup>1992 EPA mileage figures shown. See your Toyota dealer for details.  
<sup>4</sup>Optional.

Some vehicles are shown with optional equipment.  
See Data/Specs charts. For details on 1992 vehicle specifications and standard and optional features in your area, contact your Toyota dealer. A vehicle with particular equipment may not be available at the dealership. Ask your Toyota dealer to help you try to locate a specifically equipped vehicle. Vehicle specifications and standard and optional features are based upon information available at the time of printing and are subject to change without notice. Specifications and standard and optional features are for mainland U.S.A. vehicles only and may differ in the state of Hawaii and in other regions.

## TOYOTA TOUCH

**T**he Toyota Touch is our effort to make all your experiences with Toyota the very best, before the sale and after. The Toyota Touch means we want to satisfy you.

If you ever have any questions, contact your dealer's Customer Relations Manager. For additional information, call our Customer Assistance Center at 1-800-331-4331 (weekdays, 9 a.m. to 9 p.m. EST).

### WARRANTY INFORMATION

A 36-month/36,000-mile basic new vehicle limited warranty applies to all components other than normal wear and maintenance items. Additional 60-month limited warranties cover your powertrain (for 60,000 miles) and corrosion perforation (unlimited miles). See your Toyota dealer for complete details. In addition, there may be times when we will establish a special policy adjustment which will further defray repair costs.

### LIMITED WARRANTY SUMMARY

Comprehensive coverage: 36-month or 36,000-mile.

Powertrain: 60-month or 60,000-mile.

Corrosion perforation: 60-month and unlimited miles.



*"I love what you do for me."*

