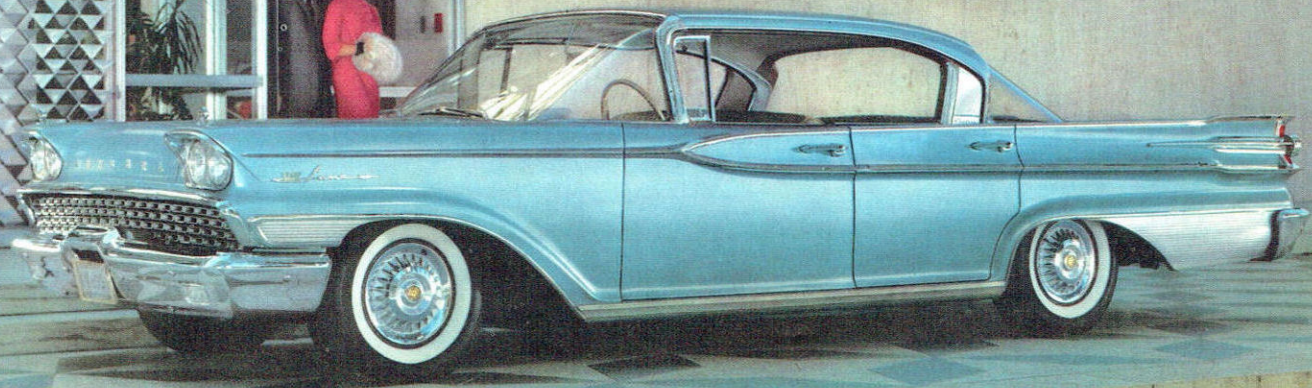


MERCURY '59



AMERICA'S LIVELIEST LUXURY CAR

FEATURE FACTS AND SPECIFICATIONS . . . 1959 MERCURY

MAJOR DIMENSIONS: (4-door hardtop models)	MONTEREY MONTCLAIR	PARK LANE	COUNTRY CRUISERS
Wheelbase	126.0"	128.0"	126.0"
Over-all length	217.8"	222.8"	218.6"
Over-all height	55.8**	56.1"	57.8"
Over-all width	80.7"	80.7"	80.7"
Wheel tread	60"(f); 60"(r)	60"(f); 62"(r)	60"(f); 60"(r)

*Montclair over-all height—56.1"

INTERIOR SPACE:

Headroom—effective, front	38.5"	38.5"	39.7"
Headroom—effective, rear	37.0"	37.0"	39.2"
Leg room—effective, front	46.2"	46.2"	45.2"
Leg room—effective, rear	43.1"	43.1"	45.1"
Hip room—front	62.5"	62.5"	62.5"
Hip room—rear	62.8"	62.8"	62.8"
Shoulder room—front	60.5"	60.5"	60.5"
Shoulder room—rear	60.8"	60.8"	60.8"

TRUNK COMPARTMENT:

Max. interior width	75.0"	75.0"	—
Capacity with spare tire	31.5 cu. ft.	34.5 cu. ft.	—
Capacity without spare tire	34.5 cu. ft.	37.5 cu. ft.	—

1959 MERCURY ENGINE-TRANSMISSION COMBINATIONS

SIZE—CARBURETOR	RATINGS	TRANSMISSIONS	MODELS
312 cu. in. displacement Bore—3.80"; Stroke—3.44" 2-barrel carburetor	210 horsepower 325 foot-pounds torque	3-speed manual; Regular Merc-O-Matic*	Monterey Series
383 cu. in. displacement Bore—4.30"; Stroke—3.30" 2-barrel carburetor	280 horsepower 400 foot-pounds torque	3-speed manual; Regular Merc-O-Matic*; Multi-Drive Merc-O-Matic*	Monterey Series (opt.); Commuter Country Cruisers
383 cu. in. displacement Bore—4.30"; Stroke—3.30" 4-barrel carburetor	322 horsepower 420 foot-pounds torque	Regular Merc-O-Matic; Multi-Drive Merc-O-Matic*	Montclair Series; Voyager and Colony Park Country Cruisers
430 cu. in. displacement Bore—4.30"; Stroke—3.70" 4-barrel carburetor	345 horsepower 480 foot-pounds torque	Multi-Drive Merc-O-Matic	Park Lane Series

*Optional at extra cost.

MAJOR OPTIONS*: Merc-O-Matic Transmission†; Multi-Drive Merc-O-Matic; power steering; power brakes; automatic power seat; 4-way power seat; power windows; heater-defroster; air conditioner-heater-defroster with Climate Dial control; tinted windshield and windows; whitewall tires;

padded instrument panel; padded sun visors; seat belts; dual exhaust; Safety Speed Monitor.

*At extra cost on certain models.

†Optional at extra cost on Monterey and Commuter models.

‡Standard on Park Lane models, optional other models.

BODY FEATURES

Rigidized body construction. Welded steel. Panoramic Skylight Windshield with 1883 sq. in. area. Compound back window with 1850 sq. in. area for 2-door and 4-door Cruiser models. Safety-Sweep electric-powered windshield wipers. Aircraft-type instrument panel. Safety steering wheel. Front-hinged hood. Convertible-type doors for all hardtop models. Cross-flow ventilation. Double-panel hood, doors and rear deck lid. **Curb weights.** 4-door Cruiser models: Monterey—4257 lb.; Montclair—4423 lb.; Park Lane—4591 lb. **Total glass areas.** 4-door Cruiser models: 5041 sq. in. safety glass. **Exterior finish:** Baked Super-Enamel in choice of 16 solid colors and 56 Two-Tone combinations. **Upholstery:** Regular or metallic vinyl and fabrics with 100% nylon face for closed cars. All-vinyl upholstery for Monterey and Park Lane Convertibles.

POWER TRAIN

Engines: Overhead valve V-8 engines in three sizes. 12-volt electrical system. Combination vacuum-centrifugal spark control. Full-flow oil filter. Full-pressure lubrication. Dry-type carburetor air filter. Self-cleaning 18mm spark plugs. The 383- and 430-cubic-inch engines have in-block combustion chambers; 3-stage cooling system; water-jacketed intake manifold; step-top pistons. Capacities: oil—5-quarts (or 6 quarts with filter change); fuel—20 gallons; coolant—20½ to 21 quarts (without heater). **Aluminized mufflers.** **Merc-O-Matic Transmission:** Combination of fluid torque converter and 3-speed planetary gear train. 5-position selector lever control. Oil capacity—21 pints. Water cooled. **Multi-Drive Merc-O-Matic:** Dual drive ranges with 6-position selector lever control. **Conventional Transmission:** Selective gear type with three forward speeds, one reverse. All gears helical. Constant-mesh second gear. Standard for Monterey and Commuter models.

CHASSIS FEATURES

Ladder-type frame with bowed box-girder side-rails. X-type reinforcement for convertible frame. **Front suspension:** Swept-back ball-joint design with anti-dive. Helical-coil springs. Full-cushion shock absorbers. Link-type front torsion-bar stabilizer. **Steering:** Ball and rack-type with 54 recirculating balls. Steering ratios—29.1 to 1 for Monterey and Commuter; 31.1 to 1 for Montclair, Voyager and Colony Park; 20.5 to 1 with power steering. **Rear suspension:** Splay-mounted leaf-type rear springs—60 inches long and 2½ inches wide. Compression-type rear spring shackles. Full-restricted hydraulic shock absorbers, sea-leg mounted. Hotchkiss drive. **Self-adjusting brakes:** Internal expanding, hydraulic brakes. 11-inch brake drum with full-circle ribs for extra cooling. Self-adjusters keep brakes properly and equally adjusted for life of linings. Brake width—3 in. (f), 2½ in. (r) Total brake lining area—233.1 sq. in. **Tire sizes—**8.00, 8.50, 9.00 x 14.

COUNTRY CRUISER FEATURES

Hardtop design with convertible-type doors. Retracting back window. "Flush-fit" tailgate, concealed package compartment beneath rear floor, vertically-mounted spare tire, 5 wheels and 8.50 x 14 tires with every model, self-storing 3rd seat, optional for 4-door models.

Cargo compartment area: 39.7 square feet behind front seat with tailgate closed; 46.3 square feet with tailgate open. **Cargo compartment capacity:** 101.1 cubic feet behind front seat; 60.1 cubic feet behind 2nd seat—plus 4 cubic feet in concealed package compartment. **Total glass areas.** Country Cruiser models: Commuter 2-door Country Cruiser—5294 sq. in. safety glass; 4-door Country Cruiser models—5330 sq. in. safety glass.

MERCURY '59

Built
to Lead

Built
to Last

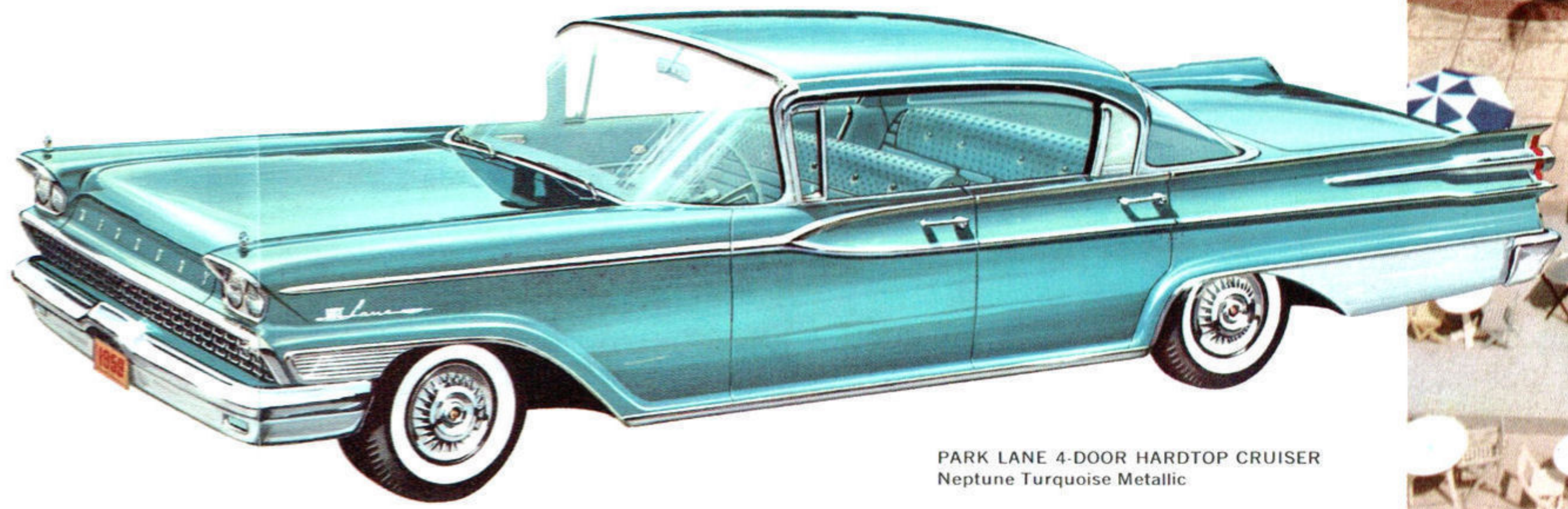
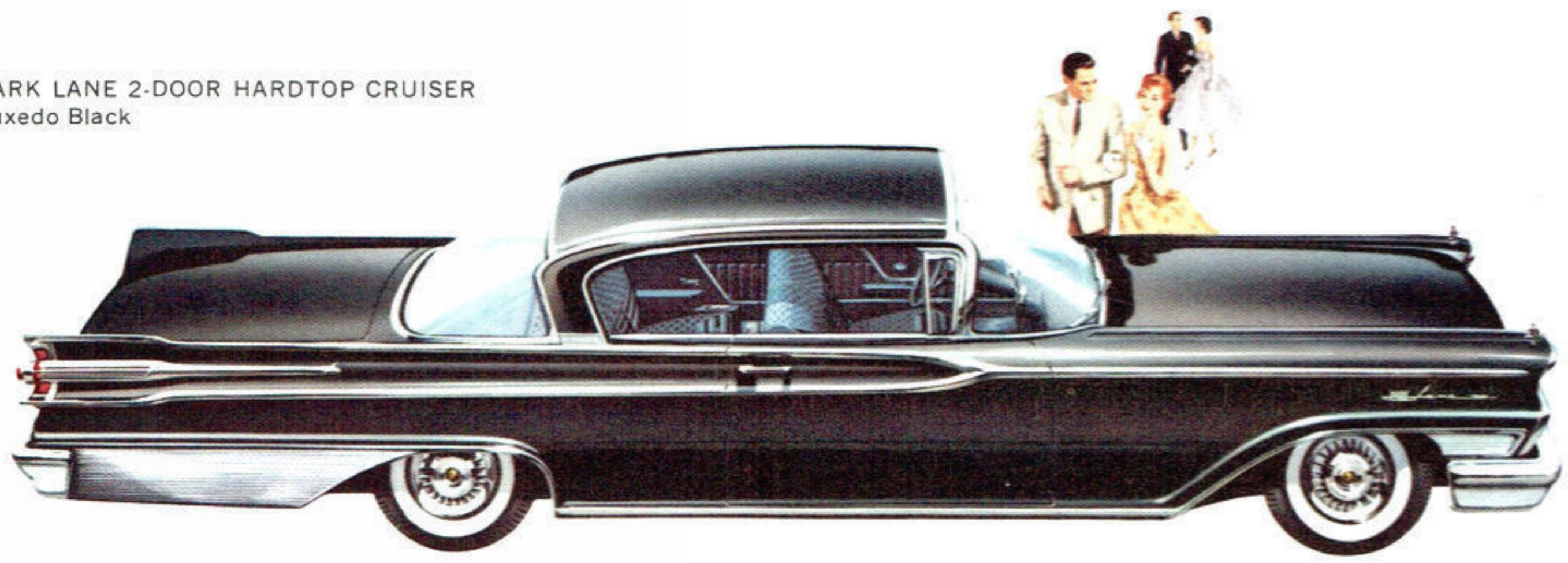
PARK LANE

Everything you'll find in the most expensive cars—except price

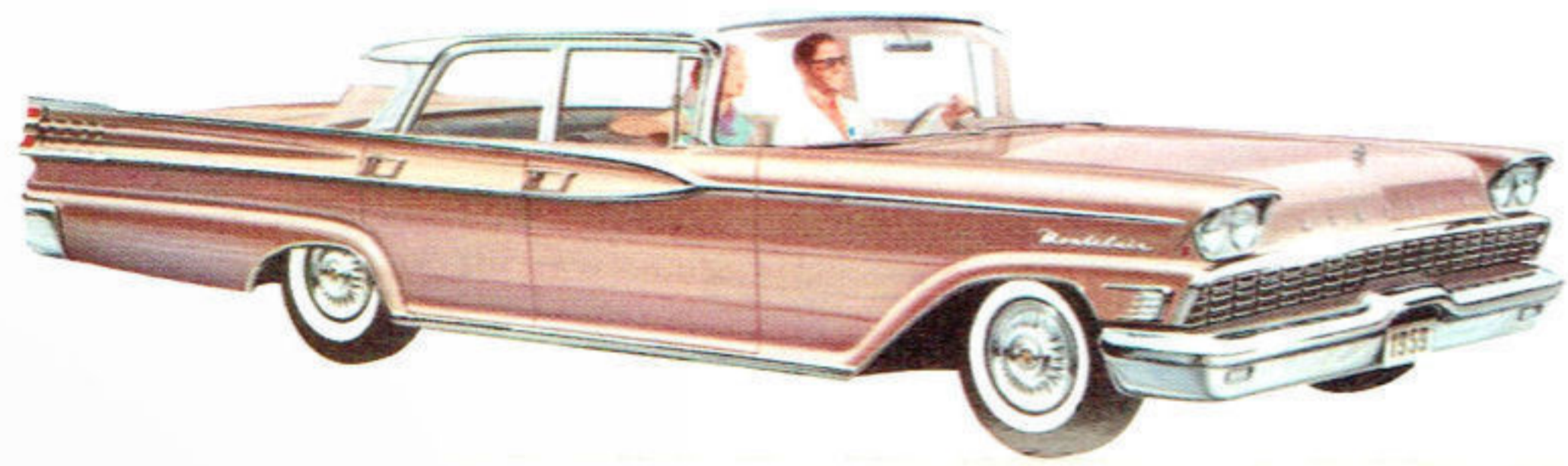


PARK LANE CONVERTIBLE
Madeira Yellow

PARK LANE 2-DOOR HARDTOP CRUISER
Tuxedo Black



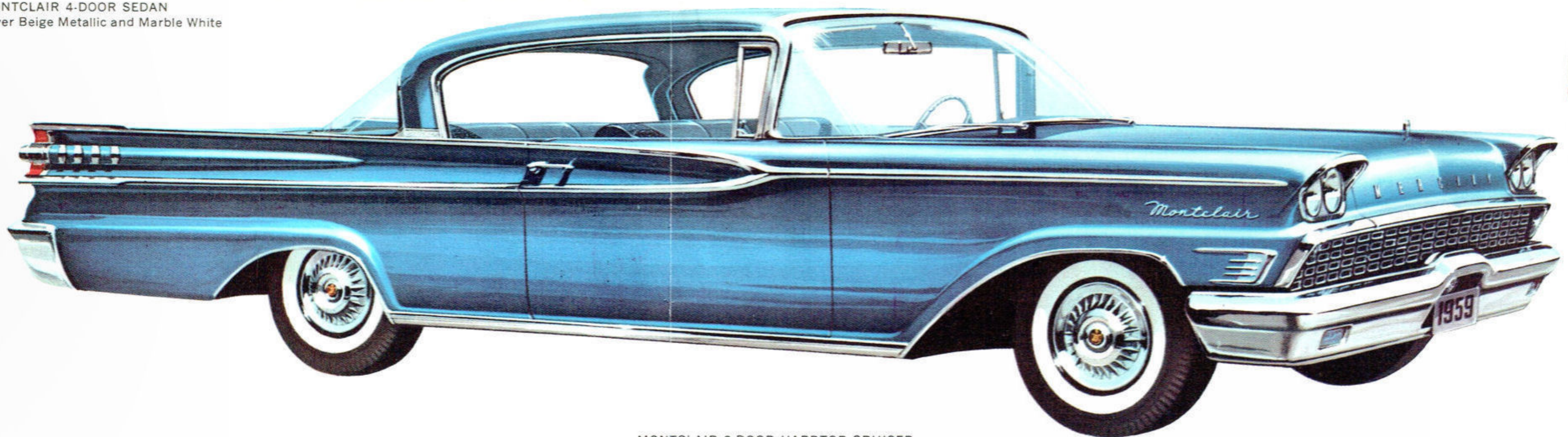
PARK LANE 4-DOOR HARDTOP CRUISER
Neptune Turquoise Metallic



MONTCLAIR 4-DOOR SEDAN
Silver Beige Metallic and Marble White

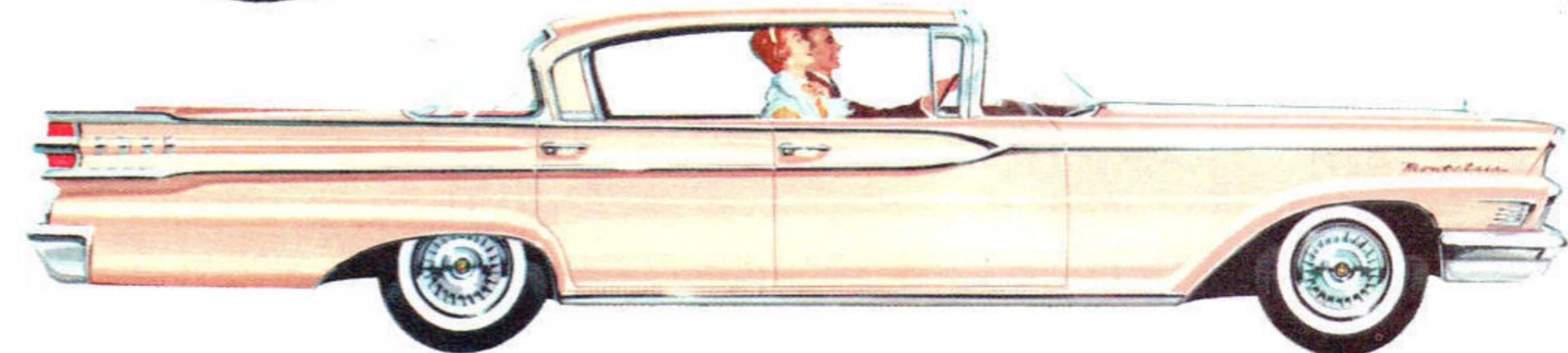
MONTCLAIR

With lively new performance—quiet, effortless, economical



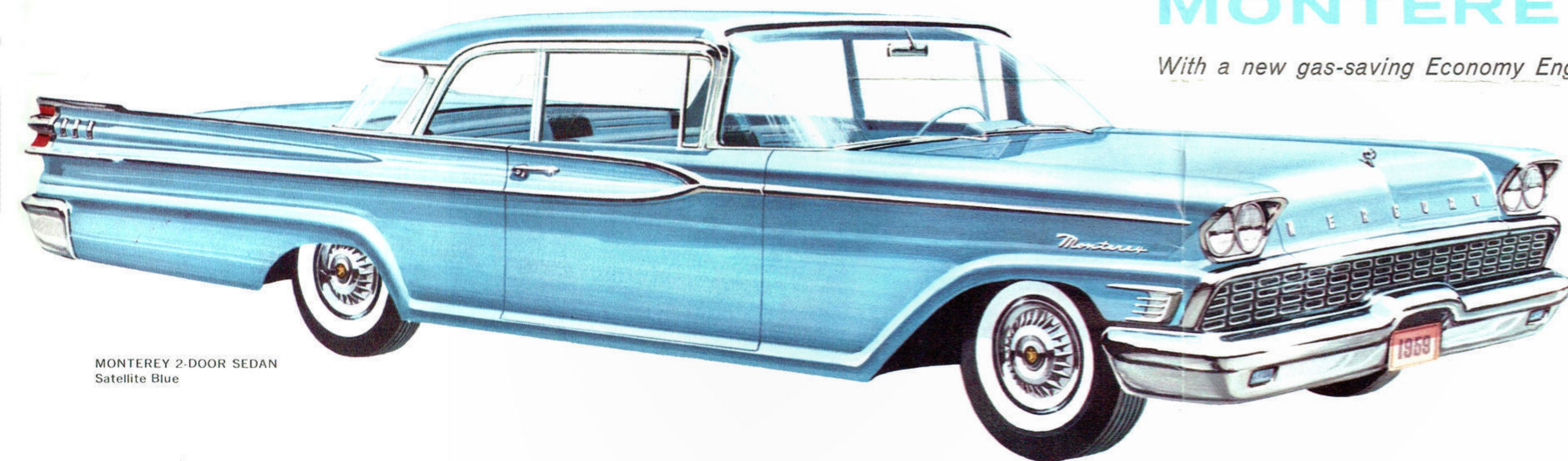
MONTCLAIR 2-DOOR HARDTOP CRUISER
Blue Ice Metallic

MONTCLAIR 4-DOOR HARDTOP CRUISER
Bermuda Sand



MONTEREY

With a new gas-saving Economy Engine



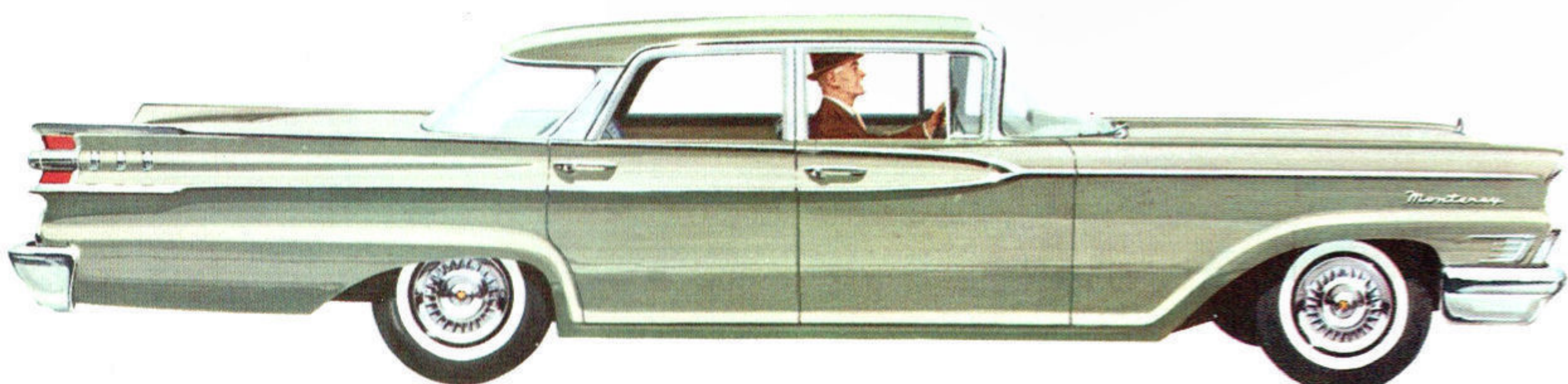
MONTEREY 2-DOOR SEDAN
Satellite Blue



MONTEREY 2-DOOR HARDTOP CRUISER
Silver Sheen Metallic



MONTEREY CONVERTIBLE
Canton Red



MONTEREY 4-DOOR SEDAN
Sagebrush Green Metallic



MONTEREY 4-DOOR HARDTOP CRUISER
Charcoal Metallic and Marble White