



**FORD
DIVISION**



1979 1/2 PRODUCTS



Table of Contents

Granada Special Value	3
Fairmont Special Value	4-5
Futura Special Value	6
Futura Ghia Luxury Group	7
Explorer Pickup	8-9
Indianapolis Speedway Pickup Package	10
Mustang Indianapolis "500" Pace Car Replica	11



1979 Granada Special Value Package

MODEL AVAILABILITY

- 2-Door Sedan
- 4-Door Sedan

PACKAGE CONTENT

- 4.1 Litre Engine (250 CID)
- Bodyside, Hood and Decklid Paint Stripes
- Full Vinyl Roof (4-Door)
- Half Vinyl Roof (2-Door)
- Odense Grain Wide Bodyside Molding Color-Keyed to Vinyl Roof, includes Integral Wheelip Molding
- Wire Wheelcovers

- Deluxe Bumper Group—Includes Front and Rear Bumper Guards with Rubber Inserts and Horizontal Rub Strips
- Color-Keyed Dual Sport Mirrors—Includes Remote Controls

COLOR AND TRIM COMBINATIONS

All compatible Granada interior and exterior color combinations are available on the Special Value Package.

OPTION AVAILABILITY

All regular production options, except the following are available:

- Bodyside Accent Molding
- 5.0 Litre Engine
- Base Wheelcovers
- Deluxe Wheelcovers
- Accent Paint Stripe
- ESS Models
- Ghia Models
- Paint/Tape Treatment

PRICING	SUGGESTED RETAIL PRICE
Total Value	\$439
Discount (50%)	(220)
Package Price	\$219

NOTE: Shown with optional WSW tires. Available at extra cost.

Specifications, prices, descriptions and illustrative material contained herein were as accurate as known at the time this publication was approved for printing. Ford Division reserves the right to discontinue models or options at any time or change specifications, equipment or design without notice and without incurring obligation.





1979 FAIRMONT Special Value Package

MODEL AVAILABILITY

- Two-Door Sedan
- Four-Door Sedan

PACKAGE CONTENT

- 2.3 Litre Engine
- Vinyl Roof
- Exterior Decor Group
- Interior Accent Group
- Special Tu-Tone Paint Treatment

NOTE: See Color and Trim chart and Complete Package Content on Package Data Sheet.

EXTERIOR COLOR SELECTIONS



PRICING	Suggested Retail Price
Total Value	\$444
Discount (50%)	(222)
Package Price	\$222

Specifications, prices, descriptions and illustrative material contained herein were as accurate as known at the time this publication was approved for printing. Ford Division reserves the right to discontinue models or options at any time or change specifications, equipment or design without notice and without incurring obligation.

NOTE: Shown with optional WSW tires. Available at extra cost.



1979 FAIRMONT Special Value Package Content

MODEL AVAILABILITY

- Two-Door Sedan
- Four-Door Sedan

PACKAGE CONTENT

- 2.3 Litre Engine
- Vinyl Roof
- Exterior Decor Group includes:
 - Bright Window Frames and Door Belt Moldings
 - Wide Black Vinyl Insert Bodyside Moldings with Integral Wheelip Moldings
 - Dual Accent Bodyside Paint Stripes
 - Dual Bright Mirrors . . . Left-Hand Remote-Control
 - Turbine Wheelcovers (Color keyed)
 - Hood Ornament
- Interior Accent Group includes:
 - Pleated Seat Trim (Vinyl Standard, Cloth optional)
 - Deluxe Steering Wheel Hub
 - R.H. Instrument Panel and Radio Surround Woodtone Applique
 - Bright Accents on Door Trim Panels
 - Deluxe Sound Package
- Special Tu-Tone Paint Treatment

OPTION AVAILABILITY

All Regular Production Options, except the following are available

- 3.3 Litre Engine
- 5.0 Litre Engine
- Tu-Tone Paint
- Exterior Accent
- Police or Taxi Package
- ES Option
- A/T Floorshift
- Bodyside Molding
- Deluxe Wheelcovers
- Trim Rings/Hubcaps
- Interior Decor Group

PRICING	Suggested Retail Price
Total Value	\$444
Discount (50%)	(222)
Package Price	\$222

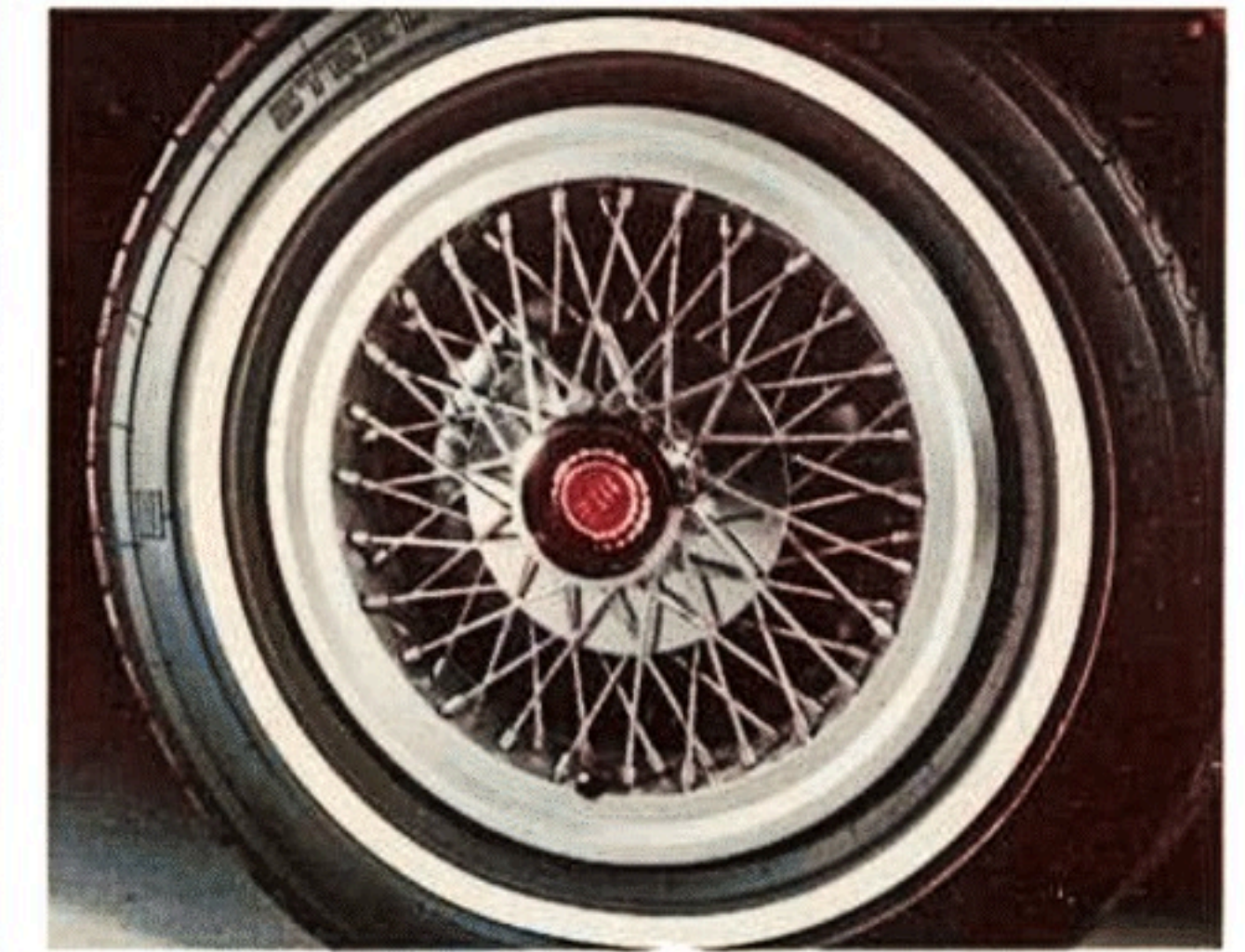
Specifications, prices, descriptions and illustrative material contained herein were as accurate as known at the time this publication was approved for printing. Ford Division reserves the right to discontinue models or options at any time or change specifications, equipment or design without notice and without incurring obligation.

COLOR AND TRIM COMBINATIONS

Body Color	Lower Tu-Tone Color	Vinyl Roof	Trim Color
Silver Met. (1G)*	Black (1C)*	Black (A)	Red or Black
Med. Blue Glow (3H)	Midnight Blue Met. (3L)	Midnight Blue (Q)	Wedgewood Blue or White/Blue
Lt. Chamois (83)	Burnt Orange Glow (5N)	Chamois (T)	Chamois or White/Chamois
Silver Met. (1G)	Med. Grey Met. (1P)	Silver (P)	Red or Black
Polar White (9D)	Med. Blue Glow (3H)	White (W)	Wedgewood Blue or White/Blue
Polar White (9D)	Creame (6P)	White (W) or Creame (V)	Black or White/Black
Bright Red (2P)	Red Glow (2H)	Dark Red (D)	Red or White/Red
Polar White (9D)	Lt. Chamois (83)	Chamois (T) or White (W)	Chamois or White/Chamois

*Silver Metallic/Black exterior tu-tone paint combination is new for '79 and unique to the Special Value Package.





1979 Fairmont FUTURA Special Value Package

MODEL AVAILABILITY

- Two-Door Sports Coupe

PACKAGE CONTENT

- 2.3 Litre Engine
- Vinyl Roof (Rear half)
- Wide Bodyside Moldings with Vinyl Inserts
- Wire Wheel Covers
Cast Aluminum, and Styled Steel Wheels available as Options
- Deluxe Bumper Group
Includes Front and Rear Bumper Guards plus rubber inserts and horizontal rub strips

- Flip-up Open Air Roof
The roof is made of tinted glass and includes a privacy shade

OPTION AVAILABILITY

All regular production options, except the following, are available:

- 3.3 Litre Engine
- 5.0 Litre Engine
- Bumper Guards, Rear
- Plastic Style Turbine Wheel Covers
- Deluxe Wheel Covers
- Vinyl Roof
- Floor Shift—Automatic Transmission
- Interior Decor Group
- Sports Group

COLOR AND TRIM COMBINATIONS

All compatible Fairmont Futura interior and exterior color combinations are available on the Special Value Package.

Pricing	Suggested Retail Price
Total Value	\$476
Discount (50%)	(238)
Package Price	\$238

NOTE: Shown with optional WSW tires. Available at extra cost.



Specifications, prices, descriptions and illustrative material contained herein were as accurate as known at the time this publication was approved for printing. Ford Division reserves the right to discontinue models or options at any time or change specifications, equipment or design without notice and without incurring obligation.



1979 Fairmont FUTURA Ghia Luxury Group

MODEL AVAILABILITY

- Two-Door Sports Coupe

GROUP CONTENT

- Special Interior and Exterior Colors
- Vinyl Roof (Half-roof only with Creme color group)
- Interior Decor Group
- Color-keyed Turbine Wheel Covers
- Dual Bright Mirrors
- Ghia Badge

OPTION AVAILABILITY

All regular options, except the following are available:

- Paint and Trim Combination not included in Luxury Groups
- Deluxe and Wire Wheel Covers
- Styled Steel Wheels and Trim Rings
- Trim Rings and Hub Caps
- Vinyl Roof
- Sports Group
- Exterior Decor Group
- Bench and Bucket Seats
- Accent Group
- Accent Stripes
- Ghia
- ES Option
- 4-Speed Manual Transmission

COLOR AND TRIM COMBINATIONS

Paint	Vinyl Roof	Interior Trim and Components	Seats	Turbine Wheel Covers
Red Glow (2H)	Dark Red	Medium Red	Red Shannon Body-cloth with pinch-pleated Red Venezia cloth inserts	Red Metallic
Creme (6P) and Light Gold (6W) Tu-Tone	Creme (Half-roof)	Gold	Creme Vinyl with Gold pinch-pleated Venezia cloth inserts	Creme
Medium Blue Glow Metallic (3H)	Medium Blue	Medium Blue	Light Wedgewood Blue Shannon Body-cloth with Light Wedgewood Venezia Cloth inserts	Midnight Blue

NOTE: Shown with optional WSW tires. Available at extra cost.



Ford Division

PRICES NOT AVAILABLE AT TIME OF PUBLICATION.

Specifications, prices, descriptions and illustrative material contained herein were as accurate as known at the time this publication was approved for printing. Ford Division reserves the right to discontinue models or options at any time or change specifications, equipment or design without notice and without incurring obligation.

THE 1979 EXPLORER PICKUP



FEATURE PAINT COLORS*



Medium Vaquero Glow Dark Jade Metallic Dark Blue Metallic

*See color and Trim Selection Chart on Product Data Sheet for complete list of colors available on the 1979 Explorer.

DUAL-COLOR BODYSIDE AND HOOD TAPE STRIPES



White/Gold



Tangerine/Gold

AVAILABILITY

The 1979 Explorer is available on the 1979 F-Series Custom F-100, F-150, F-250 and F-350 pickups (except 140" wheelbase, F-350 4x2). Availability includes Regular Cab and SuperCab, Styleside pickup box, 4x2 and 4x4 models. There are four packages—a basic "A" package, supplementary "B" and "C" packages, and package "D" containing a pickup box cover (and requiring either "A," "B," or "C" package).

NOTE: Shown with optional WSW tires. Available at extra cost.

INTERIOR SEAT TRIM

Unique Alpine Cloth Inserts with Corinthian Vinyl Bolsters



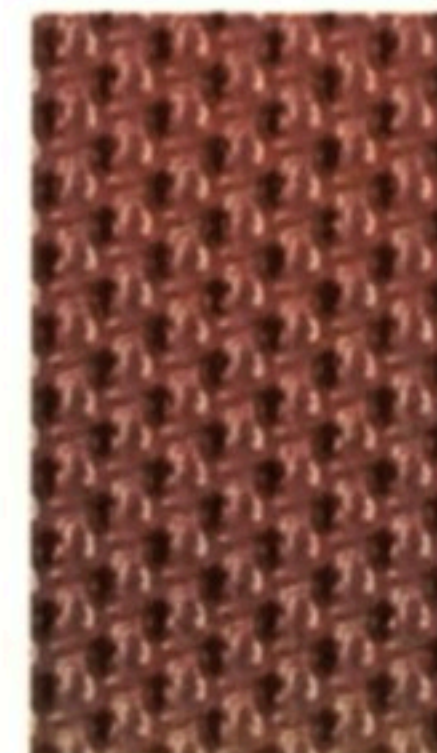
Cordovan



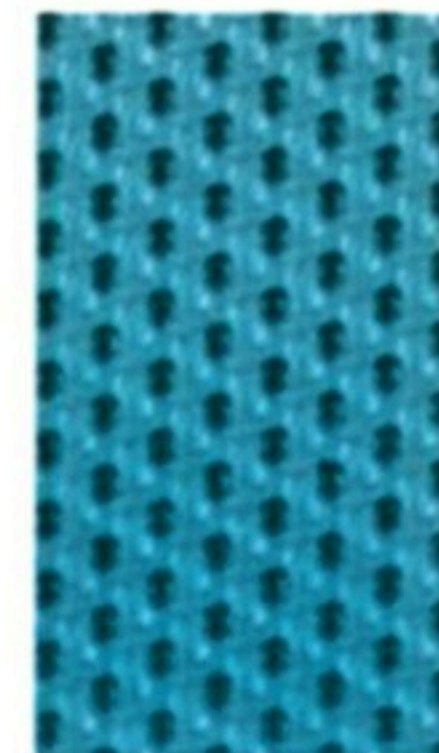
Blue



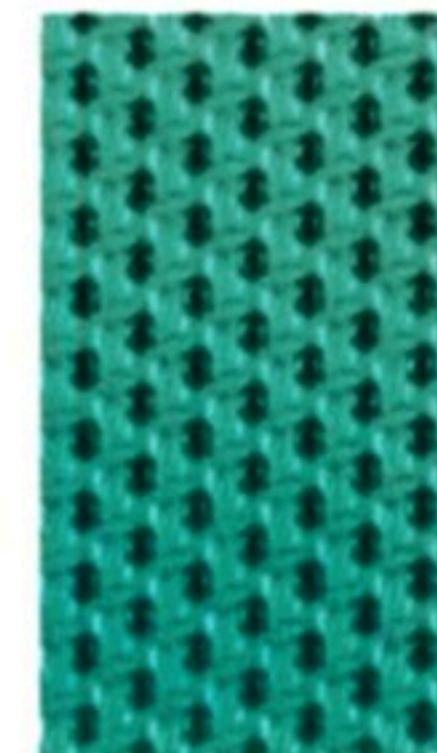
Jade



Cordovan



Blue



Jade

Special Chainmail Vinyl Inserts with Corinthian Vinyl Bolsters (optional at no extra cost)



1979 EXPLORER PICKUP PACKAGE CONTENT

MODEL AVAILABILITY

- Custom F-100, F-150, F-250 and F-350 (except 140" wheelbase, F-350 4x2)
- Regular Cab and SuperCab
- Styleside pickup box
- 4x2 and 4x4 models

PACKAGE CONTENTS

PACKAGE "A" INCLUDES:

EXTERIOR

- Three feature paints—Medium Vaquero Glow*, Dark Jade Metallic, Dark Blue Metallic
- Six additional paints from 1979 F-Series line-up
- Dual-color bodyside and hood tape stripe
- Custom trim package
- Bright windshield, drip and backlight moldings
- Chrome grille with headlamp doors
- Mag style wheel covers on all F-100/150 models. Forged aluminum wheels available at extra cost. Bright hub caps on all F-250/350 models.
- Bright 6" x 9" low-mount western mirrors (bright swing-lock recreation mirrors available)
- "Explorer" plaque on rear quarter panels
- F-O-R-D tailgate letters color-keyed orange or white
- Explorer hood ornament

INTERIOR

- Special unique Alpine cloth seat inserts with Corinthian vinyl bolsters—Cordovan, Blue and Jade or . . .
- Special Chainmail vinyl seat inserts with Corinthian vinyl bolsters—Cordovan, Blue and Jade
- SuperCab rear seat trim is Corinthian vinyl
- Custom trim package
- 14 oz. color-keyed cut pile carpeting
- Color-keyed headliner (with bright moldings) and sun visors
- Color-keyed instrument panel and crash pad
- Deluxe color-keyed seat belts (Regular Cab only)
- Cigar lighter

Tape Stripe Codes—Tailgate Letters

1) White/Gold—White 2) Tangerine/Gold—Orange

*Extra cost option NOTE: Tu-tone roof colors available in (A) Med. Walnut Glow and (B) Wimbledon White.

Specifications, prices, descriptions and illustrative material contained herein were as accurate as known at the time this publication was approved for printing. Ford Division reserves the right to discontinue models or options at any time or change specifications, equipment or design without notice and without incurring obligation.

PACKAGE "B" INCLUDES:

- Package "A" components plus . . .
- Power steering (Standard 4x4 models)
- SelectShift automatic transmission
- Tilt steering wheel

PACKAGE "C" INCLUDES:

- Package "A" and "B" components plus . . .
- Air conditioning
- Tinted glass
- Convenience group—includes:
 - 12" day/night mirror
 - Intermittent windshield wipers
 - Door map pockets
- Sport wheel covers replace mag style wheel covers

PACKAGE "D" INCLUDES:

- Deluxe pickup box cover (available with and requires Package "A", "B" or "C")

OPTION AVAILABILITY

The Following Options Will Not Be Available with the Explorer Package:

- Tu-tone paint:
 - Accent Tu-tone
 - Deluxe, bodyside
 - Combination
- Ranger Trim
- Ranger XLT Trim
- Ranger Lariat Trim
- Tape Stripes
 - Multi-color Accent
 - Chromatic
 - Dual Narrow Accent
- Wheel Covers, Deluxe—N/A on F-100/150 only
- Hub Caps, bright
- Free Wheeling Packages

- Black, low-mount mirrors
- Black, low-mount, swing-lock Recreation Mirror
- Seat Belts, Deluxe
- Seat Trim-Knitted Vinyl, Dynasty or H.D. Vinyl
- Carpet Delete

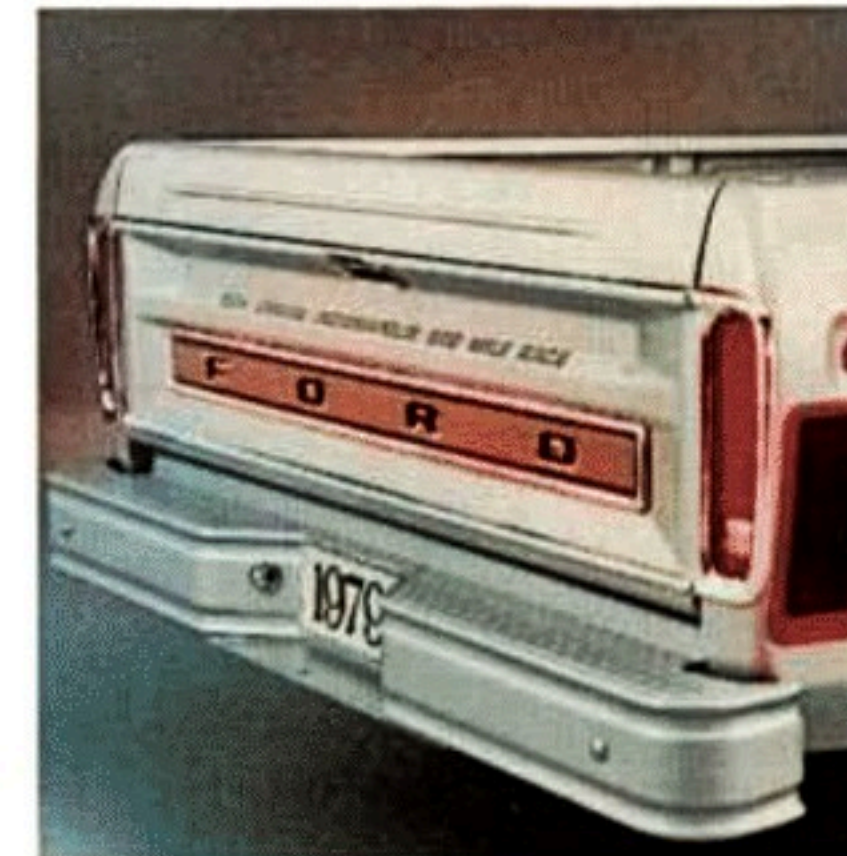
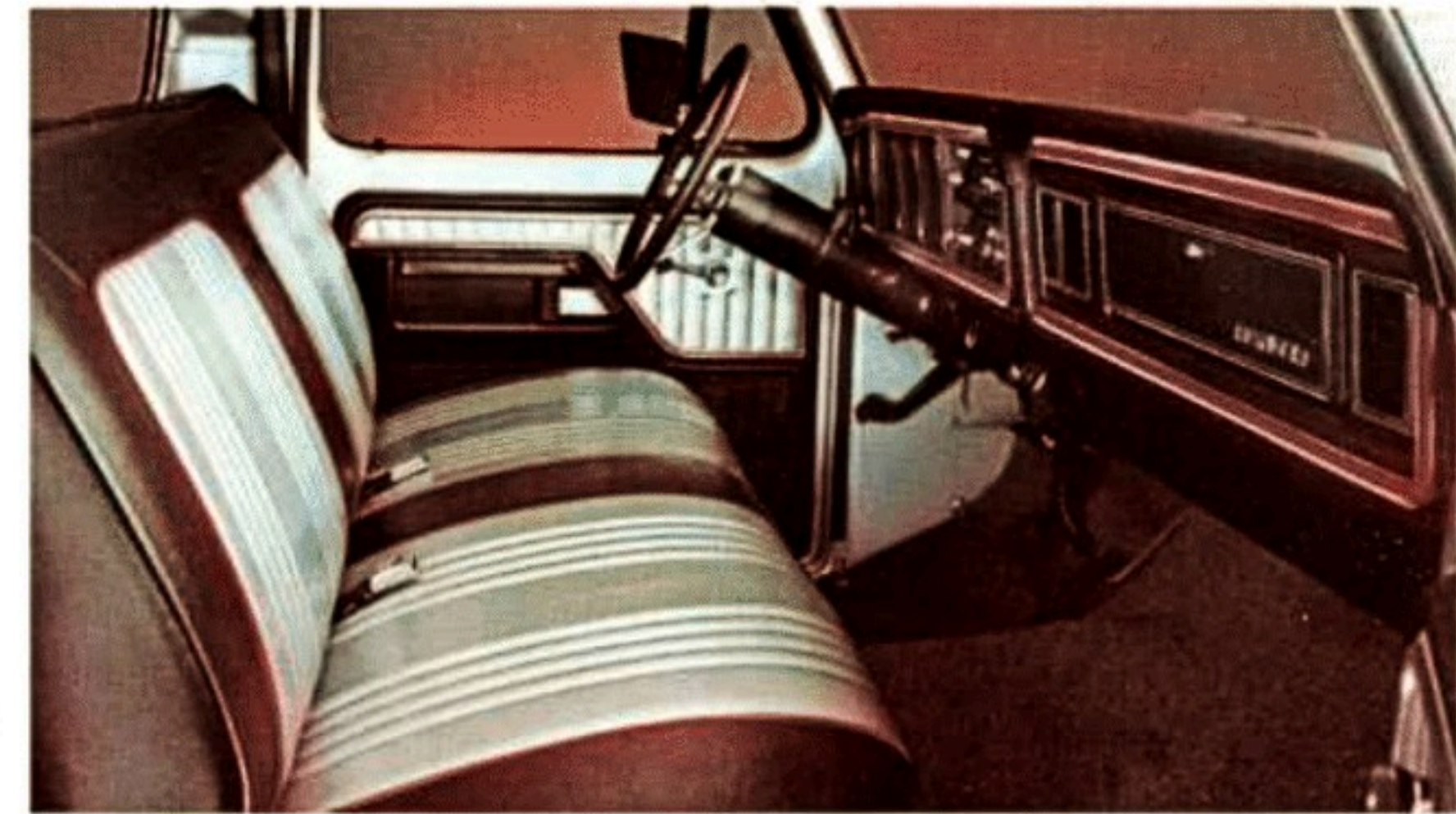
COLOR AND TRIM SELECTIONS

Exterior Paint Colors	Interior Trim Colors		
	Cordovan	Blue	Jade
1C Raven Black	2(A)		
2 Wimbledon White	2(A)	2(A)	
1G Silver Metallic		2	
3G Dk. Blue Metallic		1(B)	
3F Lt. Blue		1(B)	
64 Bright Yellow	1(B)		
6D Lt. Sand	2(A)		
46 Dk. Jade Metallic			1(B)
5W Med. Vaquero Glow*	2		

Pricing	Suggested Retail Price
F-150 4x2 Regular Cab Package "A"	
Total Value	\$ 522
Discount (28.7%)	(150)
Package Price	\$ 372
Package "B"	
Total Value	\$1,184
Discount (11%)	(200)
Package Price	\$ 984
Package "C"	
Total Value	\$1,850
Discount (10.8%)	(200)
Package Price	\$1,550
Package "D"	
Total Value	\$2,544
Discount (13.7%)	(350)
Package Price	\$2,194



Ford Division



1979 1/2 FORD F-SERIES PICKUP

INDIANAPOLIS SPEEDWAY OFFICIAL TRUCK PACKAGE

MODEL AVAILABILITY

- F-Series Styleside Pickup, Regular Cab Only with short or long wheelbase
 - 4x2; F-100, F-150, F-250
 - 4x4; F-150, F-250, F-350

PACKAGE CONTENT

Exterior

- Black Tape Stripes with Red and Orange Accents
- Black grille insert and headlight doors with argent surround
- Black front bumper
- GT bar—tubular design, painted black
- Tailgate applique—black "F-O-R-D" letters on orange field
- Spare tire lock (with standard under frame spare tire carrier only)

NOTE: "Official Truck" tape nomenclature for doors and tailgate, and "Indianapolis Motor Speedway" decal for front fenders will be shipped loose with truck and installed by dealer at option of customer.

Interior

- Door trim panels—black with silver vinyl applique with red molding
- Black floor mat
- Instrument panel—Ranger XLT level (red color tape replaces wood-grained vinyl inserts)
- Black glove box applique
- Seat trim—Ranger sew style with black grained vinyl bolsters; super-soft silver vinyl inserts with red colored vinyl welts
- Black headliner and sun visor

REQUIRED OPTIONS

- Ranger trim (bright wheellip moldings, bodyside moldings, hub caps deleted)
- Silver metallic exterior paint
- Wheels and tires:
 - **F-100/150—4x2** Ten-hole forged aluminum wheels (4) with L78 x 15C all-terrain RWL tires (5)—no other optional wheels or tires are available

- **F-150—4x4** Ten-hole forged aluminum wheels (4) with L78 x 15C all-terrain RWL tires (5)—or White Styled Steel Wheels (5) (15" x 8") with 10 x 15C RWL tires are optional
- **F-250/350** Base tires and wheels—optional tires and wheel covers are available
- Argent rear step bumper (recommended) or black contour rear bumper
- Auxiliary fuel tank

RECOMMENDED OPTIONS

- AM/FM Stereo Radio • Ammeter and Oil Pressure Gauges • Convenience Group • Handling Package • Light Group • Air Conditioning • Tinted Glass • Black Western Mirrors • CB Radio • Deluxe Seat Belts • Power Steering • Power Brakes (F-100) • Sport Steering Wheel • Deluxe Wheel covers (F-250/350) • 9.50 x 16.5 RWL Mud and Snow Tires on F-250/350 4x4 • Goodyear Tires are recommended options

COLOR and TRIM AVAILABILITY

Availability is limited to Silver Metallic exterior and silver/black vinyl interior trim

OPTION AVAILABILITY

All Regular Options are available, except the following:

- Rear Chrome Bumper • Rear Step Chrome Bumper • Bodyside Moldings • Bright Wheellip Molding • Bright Rocker Panel • Tu-Tone Paints • Bodyside Tapes • Styled Steel Wheels (except on F-150 4x4 with 10 x 15C tires) • 5-Slot Forged Aluminum Wheels • Chrome Plated Grille • LH Mounted Fuel Tank • Free Wheeling Package • Tool Storage Box • Protection Package

PRICING NOT AVAILABLE AT TIME OF PUBLICATION



Specifications, descriptions and illustrative material contained herein were as accurate as known at the time this publication was approved for printing. Ford Division reserves the right to discontinue models or options at any time or change specifications, equipment or design without notice and without incurring obligation.



1979^{1/2} Mustang

OFFICIAL

INDIANAPOLIS "500" PACE CAR REPLICA

MODEL AVAILABILITY

- 3-Door Sedan

PACKAGE CONTENT

Exterior

- Unique Pewter Exterior Color
- Black greenhouse moldings
- Special front fascia with fog lamps
- Special hood scoop
- "Mustang" nomenclature on hood
- Special rear spoiler
- Black lower back panel
- Special Pace Car tape treatment*
- Rubstrip/bodyside molding accent stripes color-keyed to tape treatment
- Cobra black lower bodyside treatment
- Dual remote control sport mirrors

Functional

- 5.0L engine (2.3L turbo optional)
- Michelin TRX tires with forged metric aluminum wheels, specially tuned suspension
- Sequential serial number
- Sport tuned exhaust (manual transmission)**

Interior

- Recaro bucket seats with special cloth seat trim, padded/net head-restraint system, and adjustable seat backs and thigh supports
- Cobra instrument panel with Indianapolis Motor Speedway badge*

Additional Standard Equipment

- Flip-up open air roof
- Console
- Leather wrapped sport steering wheel
- Intermittent windshield wipers
- AM/FM Stereo Radio with Cassette Tape
- Premium sound system
- Color-keyed deluxe seat belts
- Light group
- Power steering
- Power brakes
- Ghia level deluxe sound package

PRICING NOT AVAILABLE AT TIME OF PUBLICATION

*Tape nomenclature on body side and instrument panel badge are to be shipped loose with car and installed by dealer at option of customer.

**Automatic transmission may be available.

COLOR and TRIM COMBINATION

Availability is limited to special cloth seat trim with black interior and pewter exterior as shown.

OPTION AVAILABILITY

All regular production options with the exception of the following are available: Cobra Option, Appearance Protection Group, Wide or Narrow Bodyside Moldings, Handling Suspension, Rocker Panel Moldings, Pin Stripe Treatment, Cobra Hood Graphics, Tu-Tone Paint Treatment, Exterior Accent Group, Interior Accent Group, and all other Radio, Paint, Wheel and Tire Options, and Engine Options with the exception of 2.3L Turbo Engine.

NOTE: Shown with optional Rear Window Washer/Wiper. Available at extra cost.

Specifications, descriptions and illustrative material contained herein were as accurate as known at the time this publication was approved for printing. Ford Division reserves the right to discontinue models or options at any time or change specifications, equipment or design without notice and without incurring obligation.



Ford Division



Ford Division

Ford Motor Company reserves the right to discontinue models and options at any time or change specifications, equipment or design without notice or without incurring obligation. All options are at extra cost unless otherwise indicated.